

Attachment A: Figures

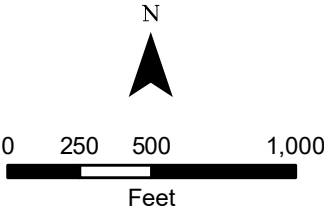


Wallula Gap Solar

Figure A-1
Preliminary Site Plan

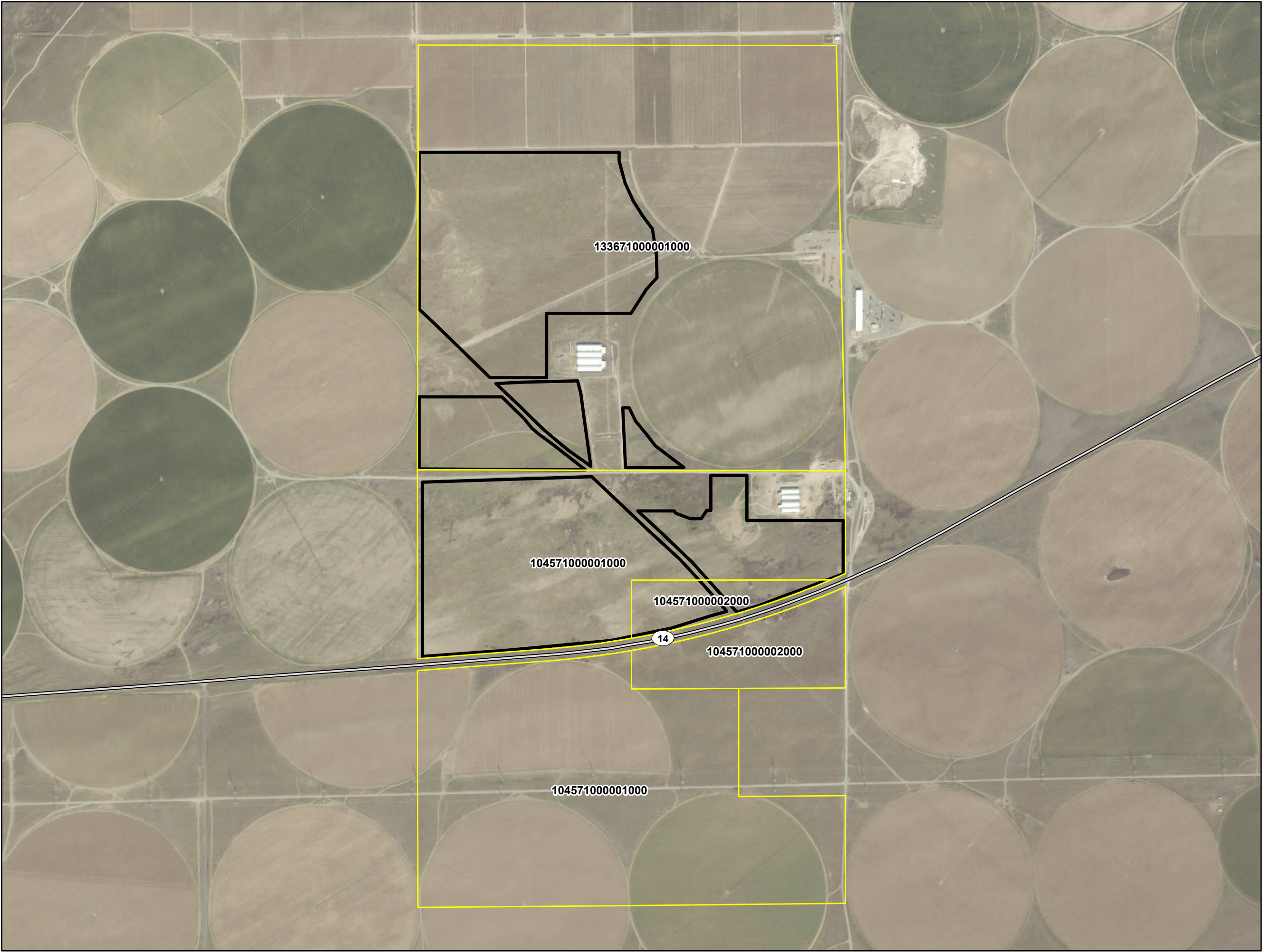
Benton County, WA

- Facility Area
- Preliminary Site Plan
- Solar Array
- Access Road
- Inverter
- Overhead Gen-Tie
- Underground Gen-Tie
- Security Fence
- BESS
- O&M Building
- Project Substation
- Interconnection Area
- Staging Area
- Basemap Features**
- Existing Transmission Line
- Highway



NOT FOR CONSTRUCTION



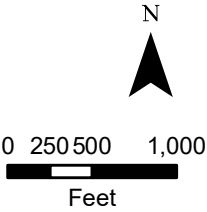


Wallula Gap Solar

Figure A-2
Assessor Parcels

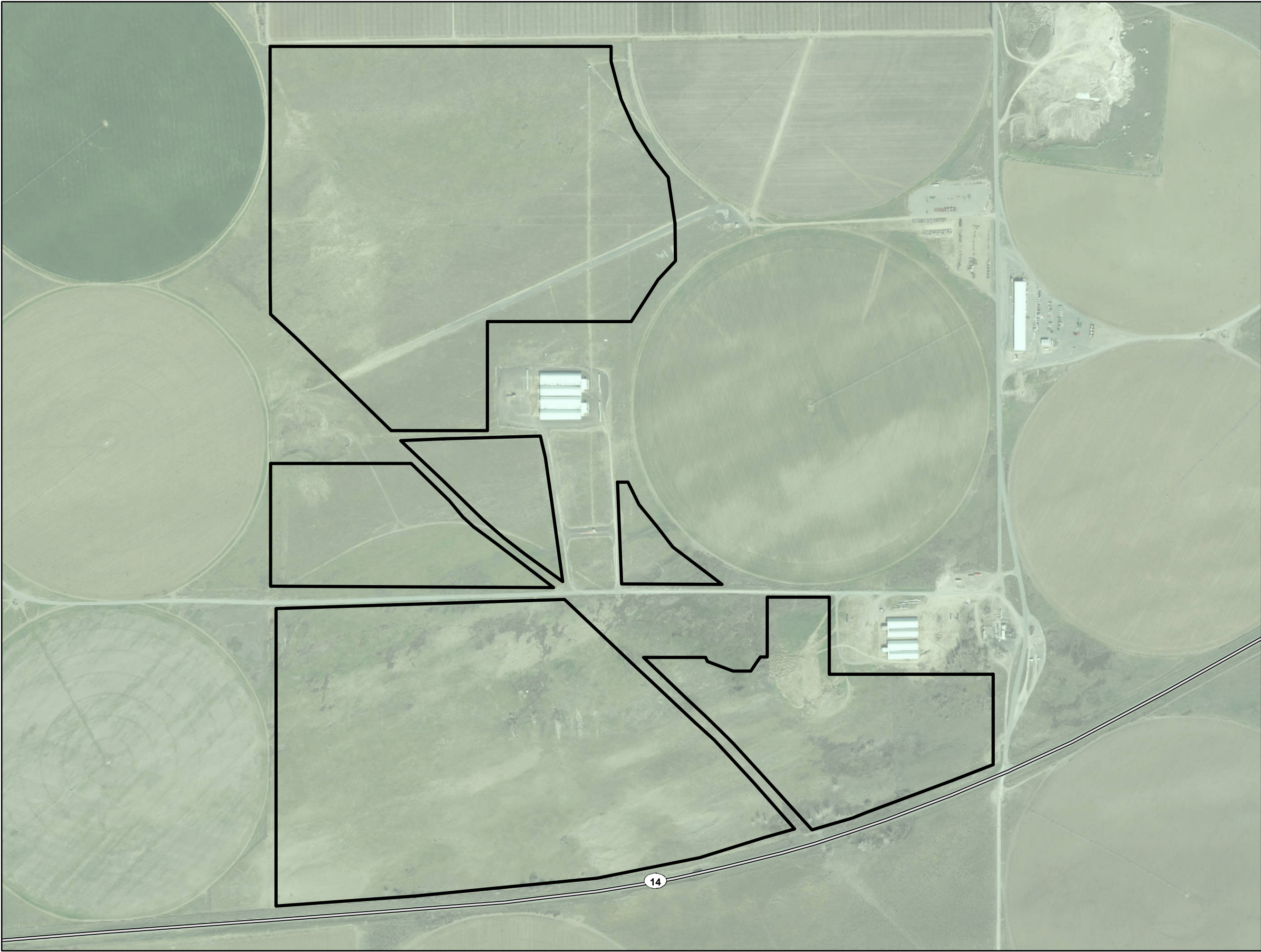
Benton County, WA

- Facility Area
- Facility Parcels



NOT FOR CONSTRUCTION





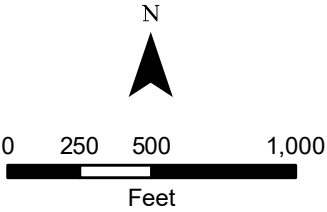


Wallula Gap Solar

Figure A-3
Zoning

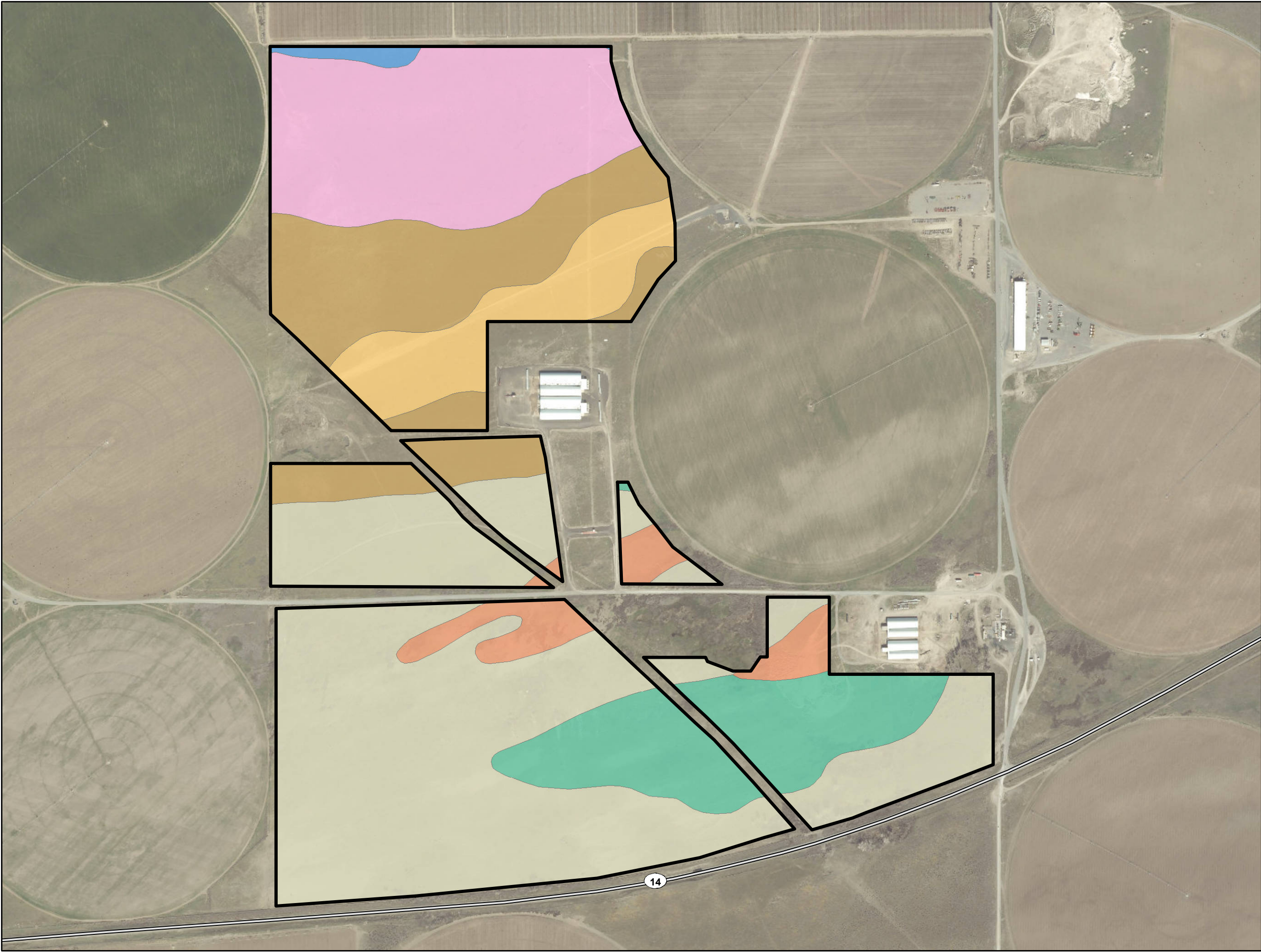
Benton County, WA

-  Facility Area
- County Zoning
-  GMA AG



NOT FOR CONSTRUCTION











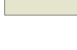

Wallula Gap Solar

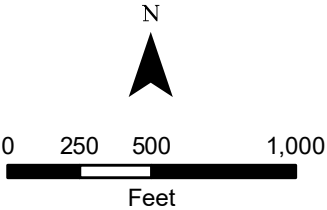
**Figure A-4
Soils**

Benton County, WA

 Facility Area

Soil Unit

-  BbC: Burbank loamy fine sand, 0 to 15 percent slopes
-  BdE: Burbank loamy fine sand, basalt substratum, 0 to 30 percent slopes
-  Du: Dune land
-  KoC: Koehler loamy fine sand, 0 to 8 percent slopes
-  QuE: Quincy loamy sand, 0 to 30 percent
-  ScAB: Scooteney silt loam, 0 to 5 percent slopes
-  WfC2: Warden very fine sandy loam, 0 to 15 percent slopes






NOT FOR CONSTRUCTION

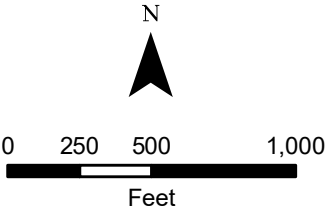


Wallula Gap Solar

Figure A-5
Topography, Slope and
Geologic Hazards

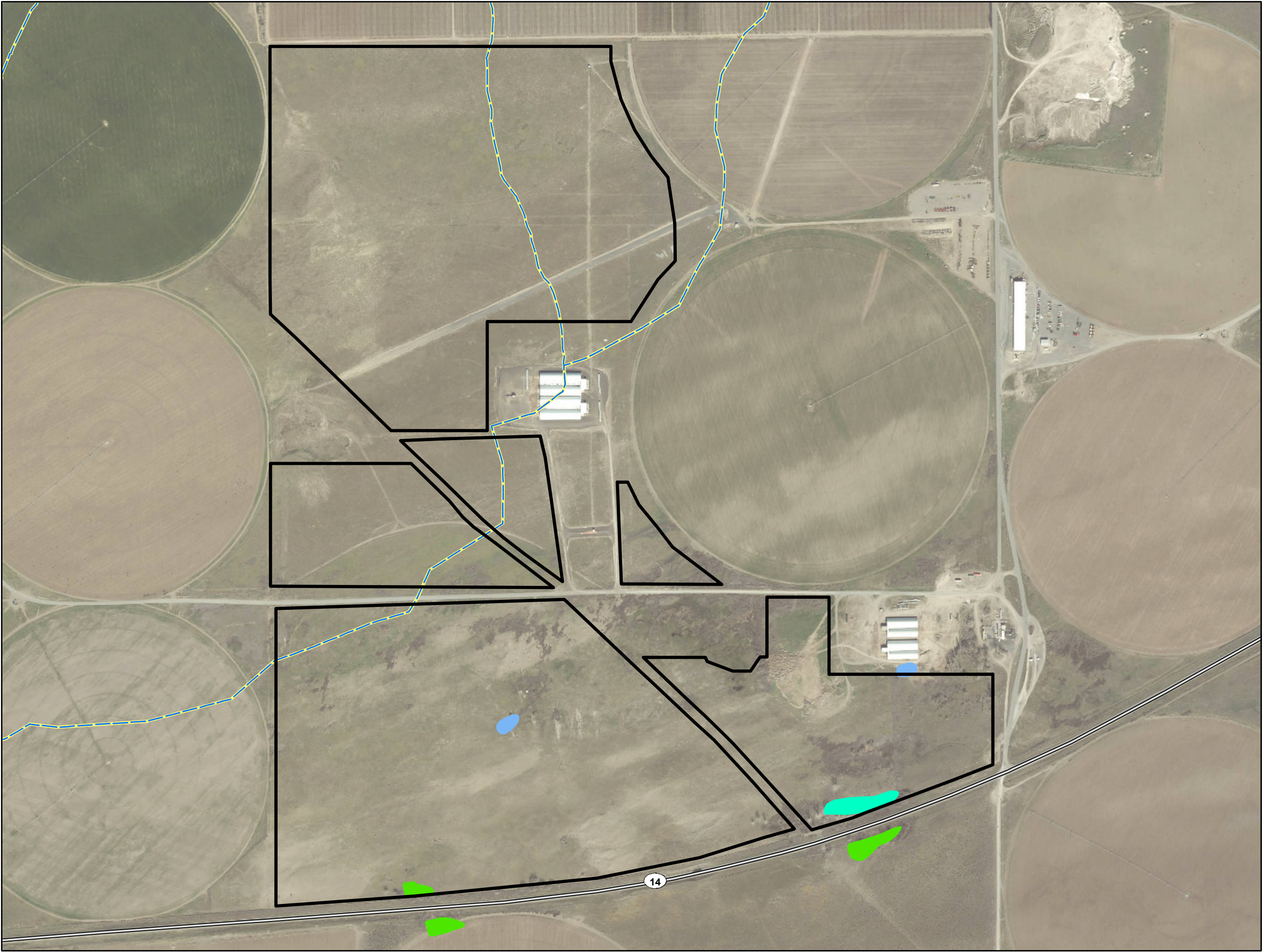
Benton County, WA

-  Facility Area
- County Geologically Hazardous Areas
-  Combined Erosion Hazard
and Steep Slope: 15%
-  Steep Slope: 15%



NOT FOR CONSTRUCTION









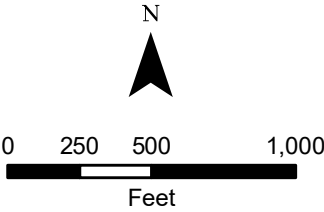


Wallula Gap Solar

Figure A-6
Surface Waters and Wetlands

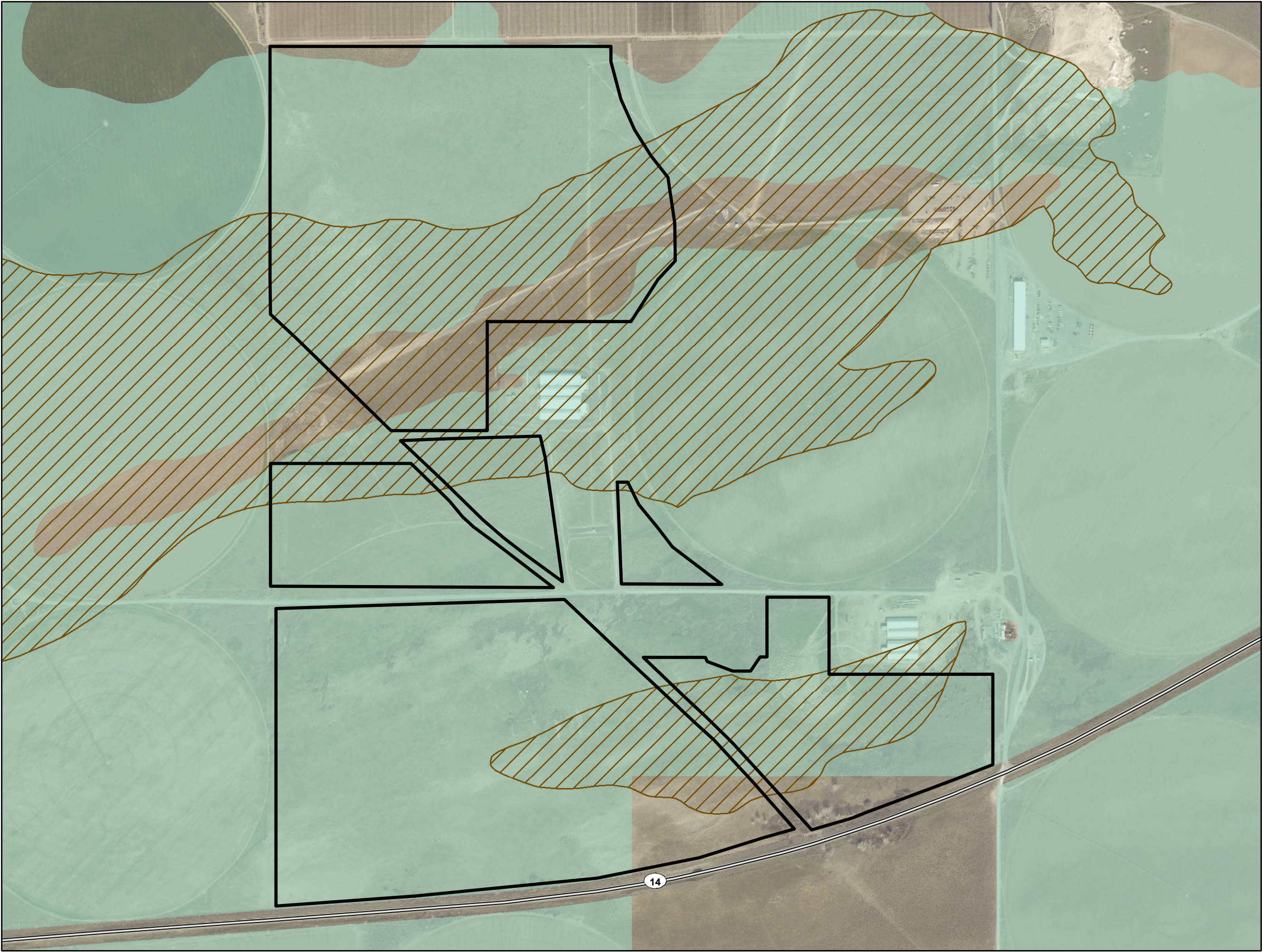
Benton County, WA

-  Facility Area
-  NHD Intermittent Stream
- NWI Wetland
 -  Freshwater Emergent Wetland
 -  Freshwater Forested/Shrub Wetland
 -  Freshwater Pond
 -  Riverine



NOT FOR CONSTRUCTION





Wallula Gap Solar

**Figure A-7
Critical Aquifer Recharge
Areas**

Benton County, WA

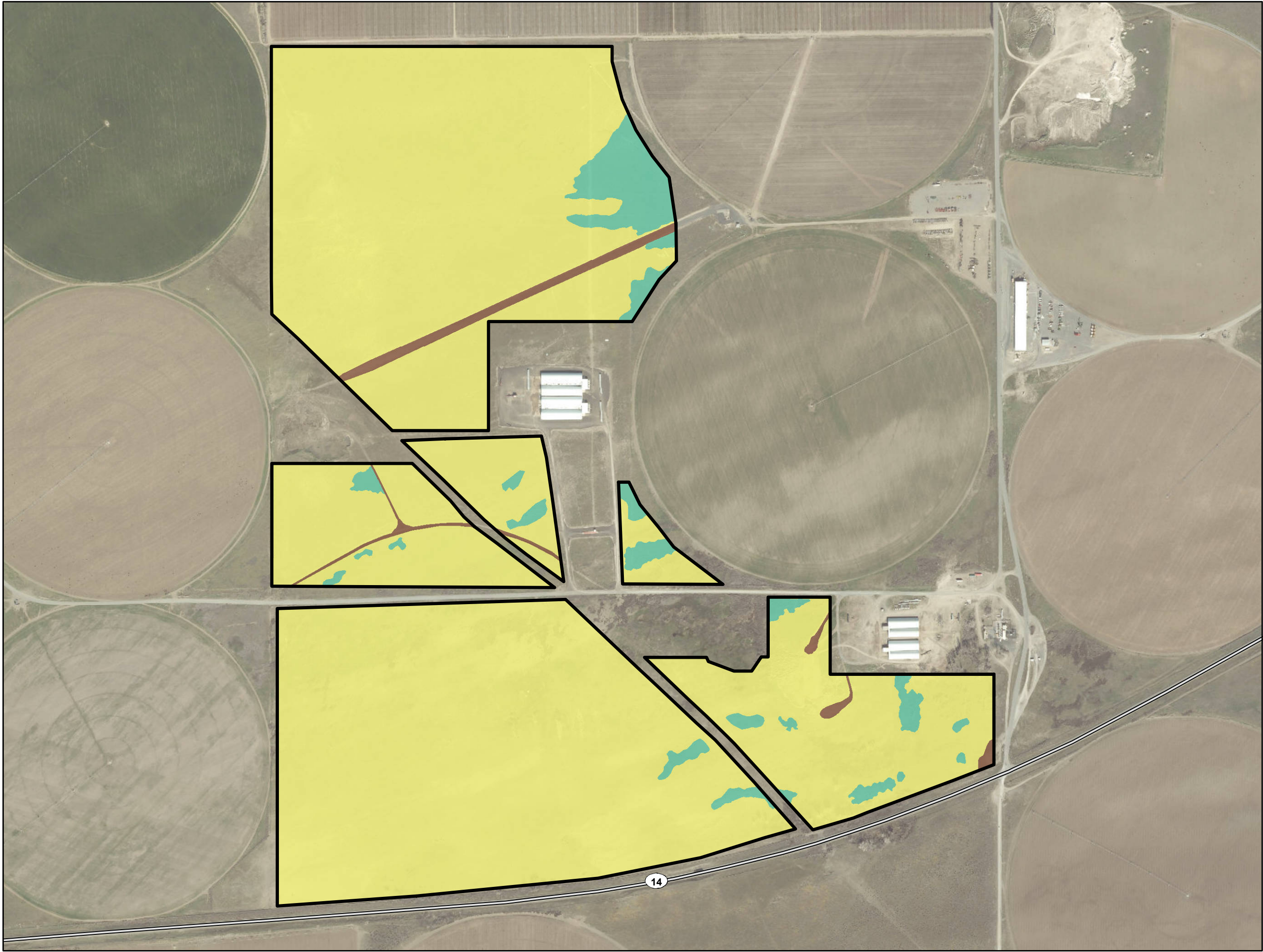
-  Facility Area
- Benton County CARA
 -  Alluvial Soil
 -  Combined Hydrologic Soil Group A & Irrigated Ag

N

0 250 500 1,000
Feet

NOT FOR CONSTRUCTION







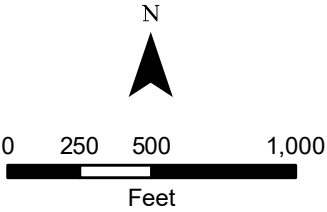


Wallula Gap Solar

Figure A-8
Habitat Types
within the Facility Area

Benton County, WA

-  Facility Area
- Habitat
-  Mixed Environs
-  Pasture
-  Shrub-steppe



NOT FOR CONSTRUCTION

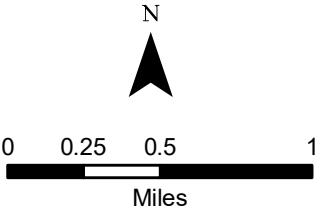


Wallula Gap Solar

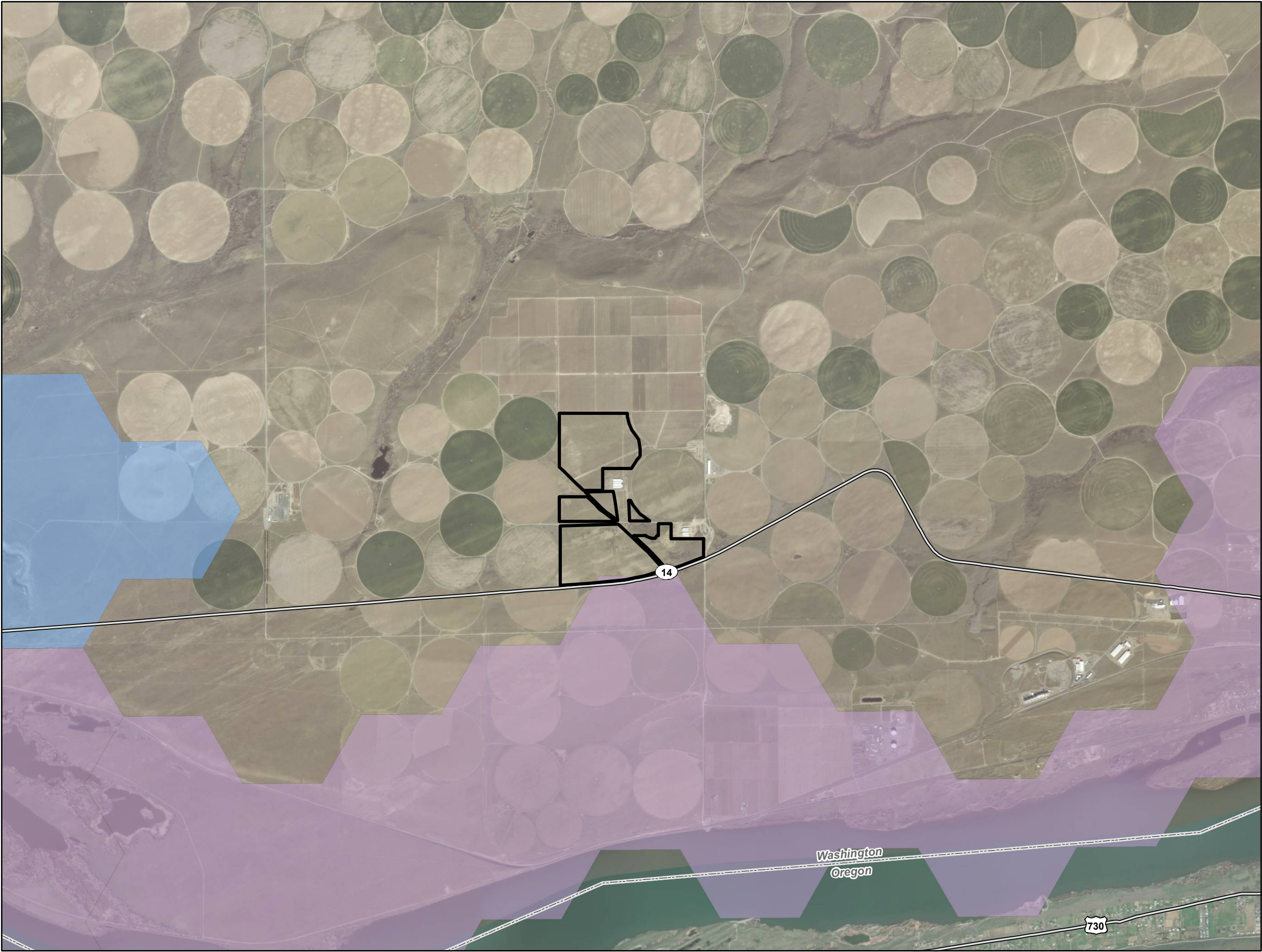
Figure A-9
Wildlife Corridors

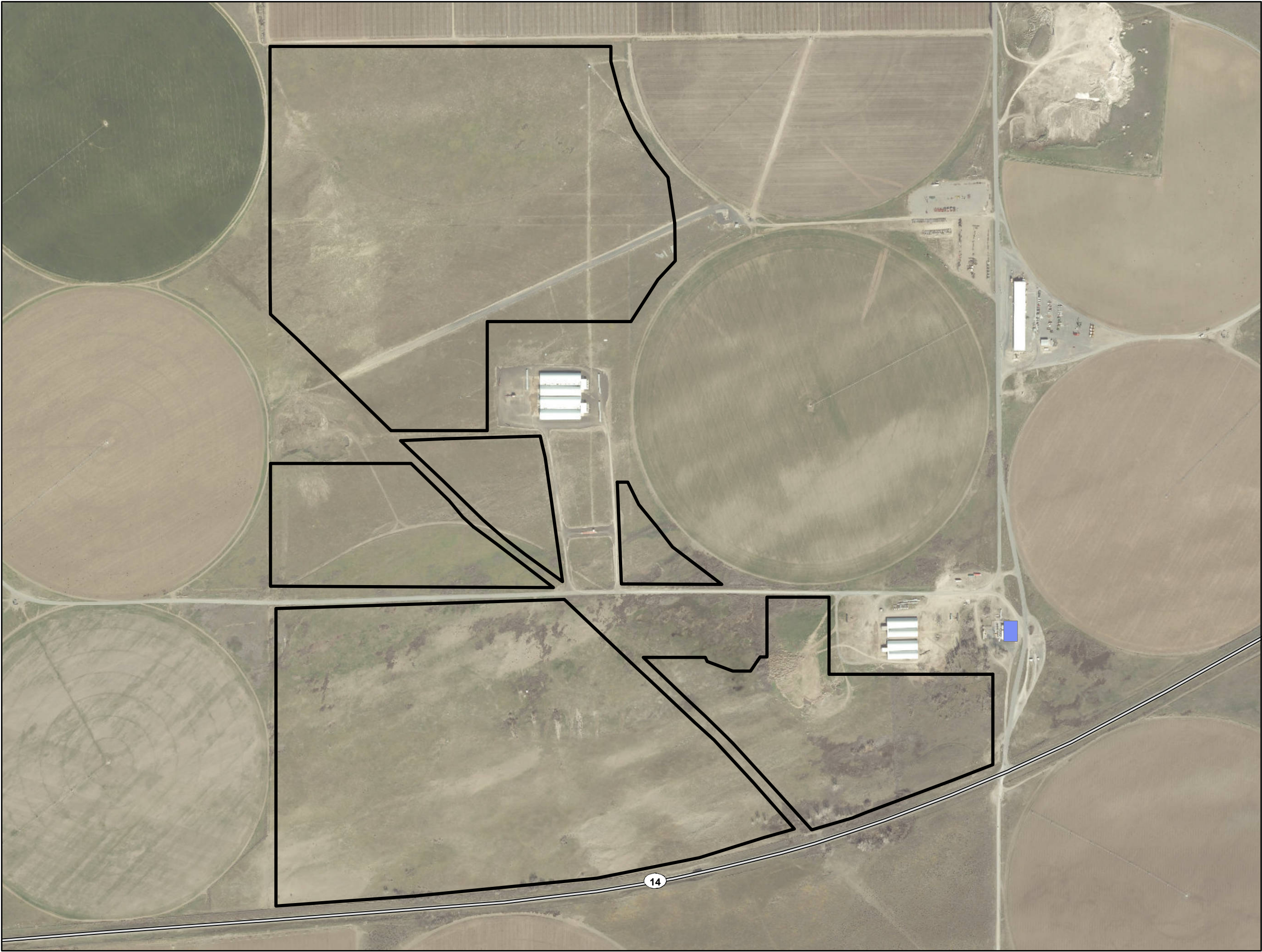
Benton County, WA

- Facility Area
- Arid Lands Initiative (2014)
 - Priority Core Area
 - Priority Linkage Area



NOT FOR CONSTRUCTION



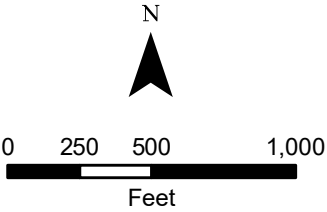


Wallula Gap Solar

**Figure A-10
Land Ownership**

Benton County, WA

-  Facility Area
- Land Ownership
-  Benton County PUD
-  Private



NOT FOR CONSTRUCTION

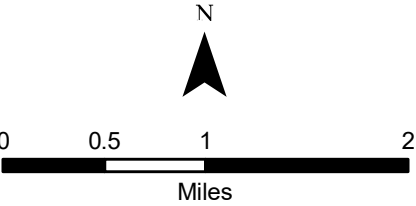


Wallula Gap Solar

Figure A-11
Transportation Routes

Benton County, WA

- Facility Area
- State Boundary
- Highway
- Local Road



NOT FOR CONSTRUCTION

