



Renewable Energy.
Sustainable Development.

Wautoma Solar Energy Project

August 8, 2022

Innergex Renewable Energy



AGENDA

- Team Introductions
- Innergex Overview
- Project Overview
- Siting Considerations / Preliminary Layout
- Permitting and Studies
- Benefits
- Schedule



INNERGEX - A SUSTAINABLE BUSINESS MODEL

It all starts with **a shared vision.**

Integrating sustainable development into our strategic planning, decision-making process, and daily activities has always been part of our Corporate Culture.



People

We are a team of passionate individuals who build strong, long-term partnerships with local communities.



Planet

We believe that renewable energy is part of the solution to reducing the impacts of climate change.



Prosperity

We generate value for our employees, our shareholders, our partners and host communities.

A GLOBAL PLAYER

480

employees

83 facilities
in operation

CANADA

Gross 1,954 MW
Net 1,454 MW

FRANCE

Gross 326 MW
Net 226 MW

UNITED STATES

Gross 1,251 MW
Net 1,168 MW

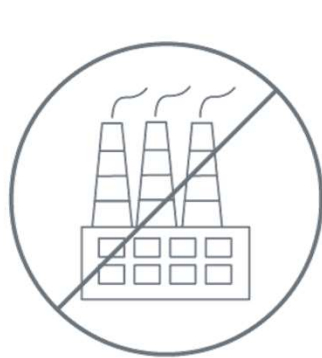
CHILE

Gross 655 MW
Net 636 MW

1,083,528 households
supplied with clean,
renewable energy in
2021

RENEWABLE ENERGY PROCUREMENT IN WA

- Clean Energy Transformation Act (CETA) 2019
 - 2030: Greenhouse gas neutral electricity supply
 - 2045: 100% renewable or non-emitting (“clean”) electricity



2025
NO COAL
STANDARD



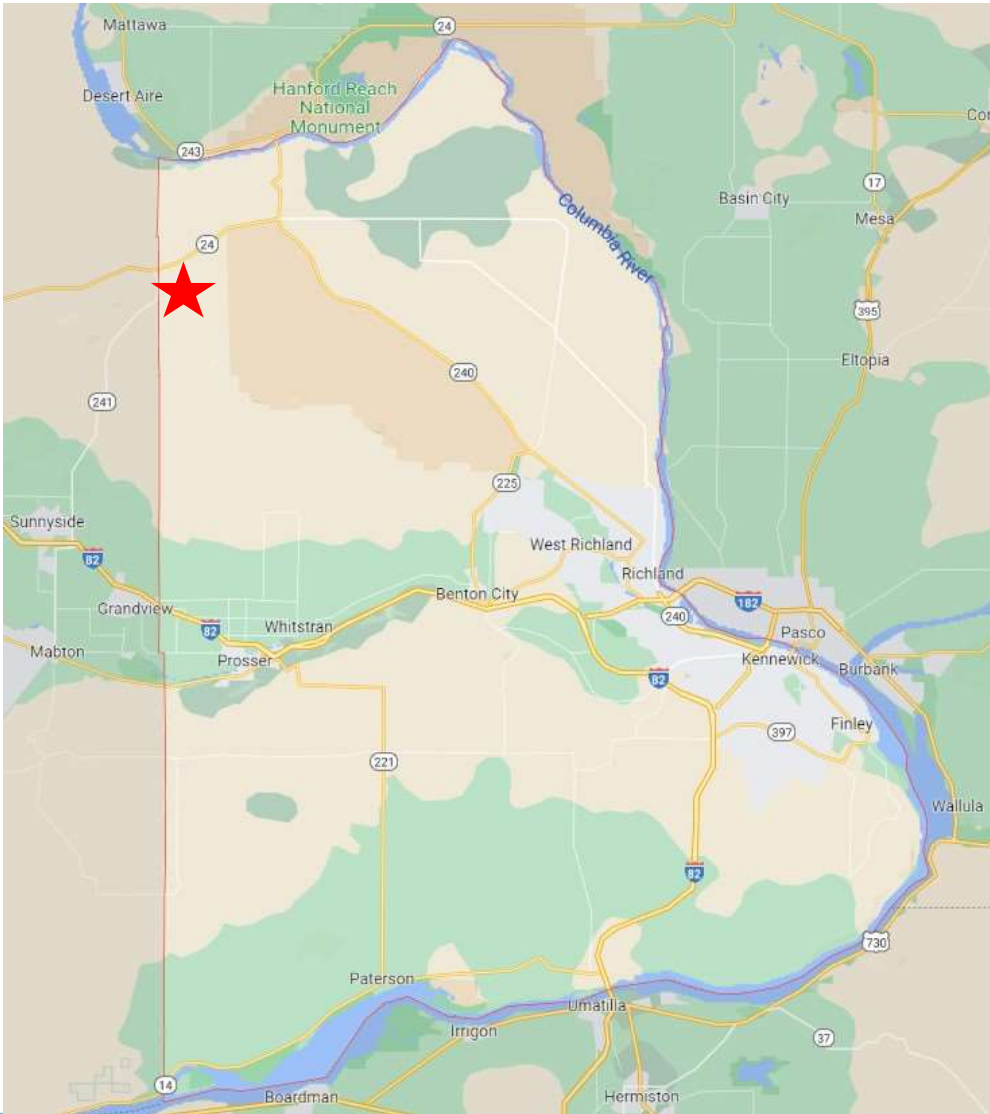
2030
GHG NEUTRAL
STANDARD



2045
100% CLEAN
STANDARD



WAUTOMA SOLAR ENERGY PROJECT



- NW Benton County
- Proposed design - 470 MW solar + storage
- Anticipated final design - 400 MW solar + storage
- 875 GWh; enough to power approx. 70,000 WA households



SITING CONSIDERATIONS

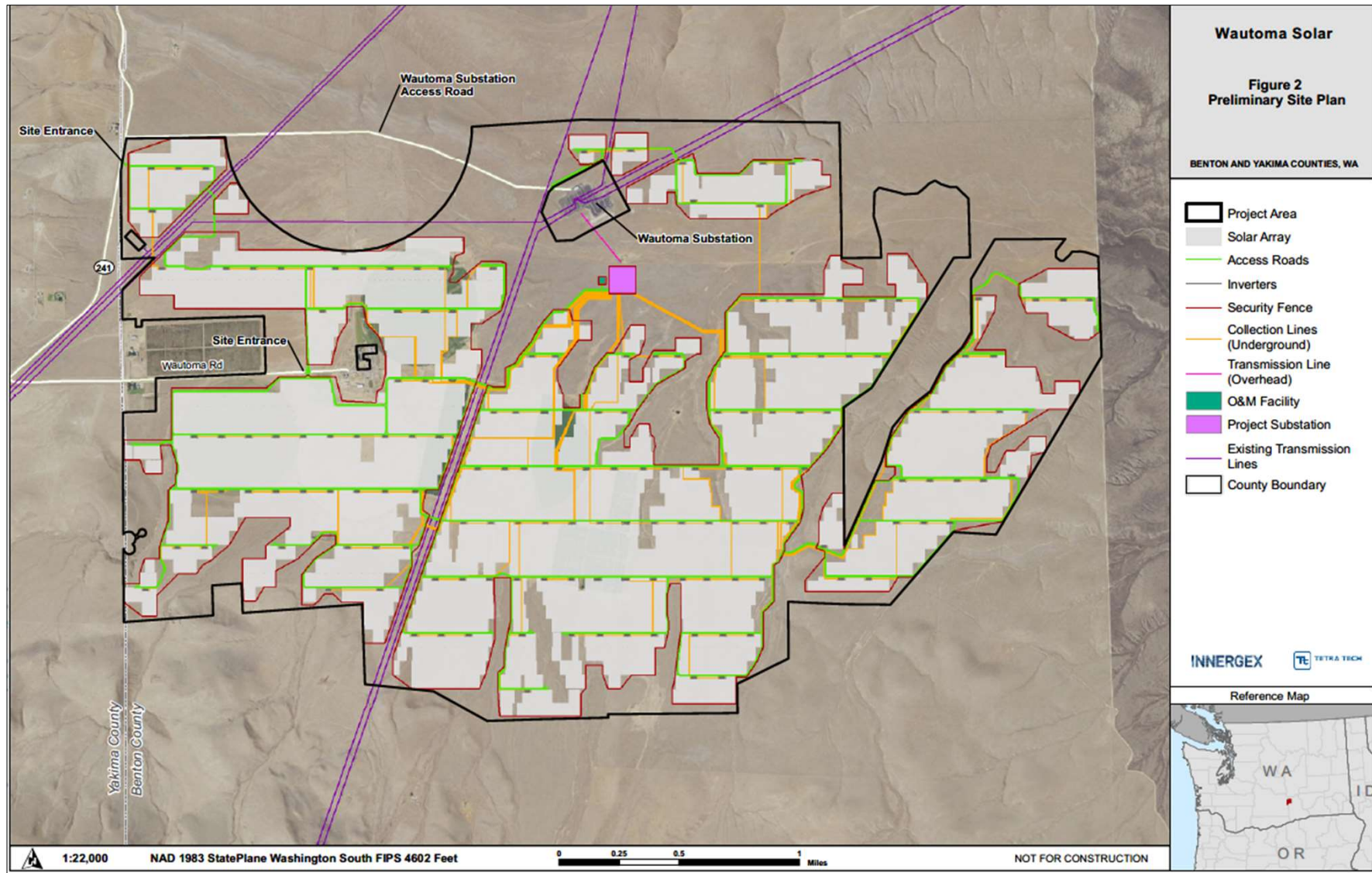


AGRICULTURE AND WATER

- Agriculture:
 - Low percentage of agricultural land being converted (only 0.5% of GMAAD land in Benton County)
 - Innergex is investigating dual use solar alternatives with participating landowners, including using portions of the solar project lands for grazing and coexistence of solar panels with crops on a small area.
- Water use
 - Water required for construction and operations phases is anticipated to be sourced either from existing wells with valid water rights or from an off-site municipal source.
 - Amount to be used is low in comparison to agricultural irrigation.



PRELIMINARY LAYOUT



PERMITTING AND STUDIES



Plant and Wildlife
Habitat Surveys

Delineation of
Wetlands and
Waters of the U.S.



Cultural and
Archaeological
Resources
Survey

Visual Impact
Assessment

Geotechnical &
Hydrology Studies

Glint & Glare
Analysis



Acoustic
Assessment

Traffic and
Transportation
Analysis



AVOIDING, MINIMIZING, AND MITIGATING IMPACTS

- Traffic Control Plan
- Vegetation Management Plan
- Habitat Management Plan
- Emergency Response / Fire Response Plan
- Erosion and Sediment Control Plan
- Spill Prevention and Response Plan
- Stormwater Pollution Prevention Plan
- Decommissioning Plan



JOBS AND SERVICES



PROJECT BENEFITS

Local Tax
Revenue

Partnership
Agreements

Infrastructure
investments

Community
investment



Part of being a good neighbor means supporting the causes and efforts that have a broader impact in communities.

STAKEHOLDERS

- Agencies (EFSEC, WDFW, Ecology, DAHP)
- Tribal Governments
- Benton County Commissioners and Planning Department
- Benton County Emergency Services Department
- Participating Landowners
- Adjacent Landowners
- General Public



PROJECT STATUS AND ANTICIPATED SCHEDULE

Q2 2020	Initiated Participating Landowner Engagement
Q2 2020	First Site Visit
Q2 2020	Site Control Obtained
Q3 2020	Initiated Transmission & Interconnection Studies
Q3 2020	Engaged Environmental Consultants
Q1 2021	Initiated Environmental & Cultural Studies
Q2 2021	Outreach to community members and local officials
Q3 2021	Outreach to permitting agencies
Q2 2022	Initiated Community Meetings
Q2 2022	Application for Site Certification Submitted to EFSEC
Q2 2022	EFSEC Public Meeting and Land Use Consistency Hearing
Q2 2023	Large Generation Interconnection Agreement with BPA (Anticipated)
Q3 2023	Site Certification Agreement Issuance (Anticipated)
Q1 2024	Construction Start (Earliest)
Q3 2025	Phase 1 Commercial Operation Date (Earliest)

COMMUNITY ENGAGEMENT IS ONGOING THROUGHOUT
THE ENTIRE PROCESS



Renewable Energy.
Sustainable Development.

Thank you!

Reach us at:
wautomasolar@innergex.com

Website:
www.wautomasolar.com

Innergex Renewable Energy

