



Renewable Energy.
Sustainable Development.

Wautoma Solar Energy Project

May 17, 2022

Innergex Renewable Energy



AGENDA

- Innergex Overview
- Project Overview
- Siting Considerations / Preliminary Layout
- Permitting and Studies
- Benefits
- Schedule



INNERGEX - A SUSTAINABLE BUSINESS MODEL

It all starts with **a shared vision.**

Integrating sustainable development into our strategic planning, decision-making process, and daily activities has always been part of our Corporate Culture.



People

We are a team of passionate individuals who build strong, long-term partnerships with local communities.



Planet

We believe that renewable energy is part of the solution to reducing the impacts of climate change.



Prosperity

We generate value for our employees, our shareholders, our partners and host communities.

INNERGEX RENEWABLE ENERGY - A GLOBAL LEADER

480
employees

80 facilities
in operation

CANADA

Gross 1,954 MW
Net 1,454 MW

FRANCE

Gross 324 MW
Net 226 MW

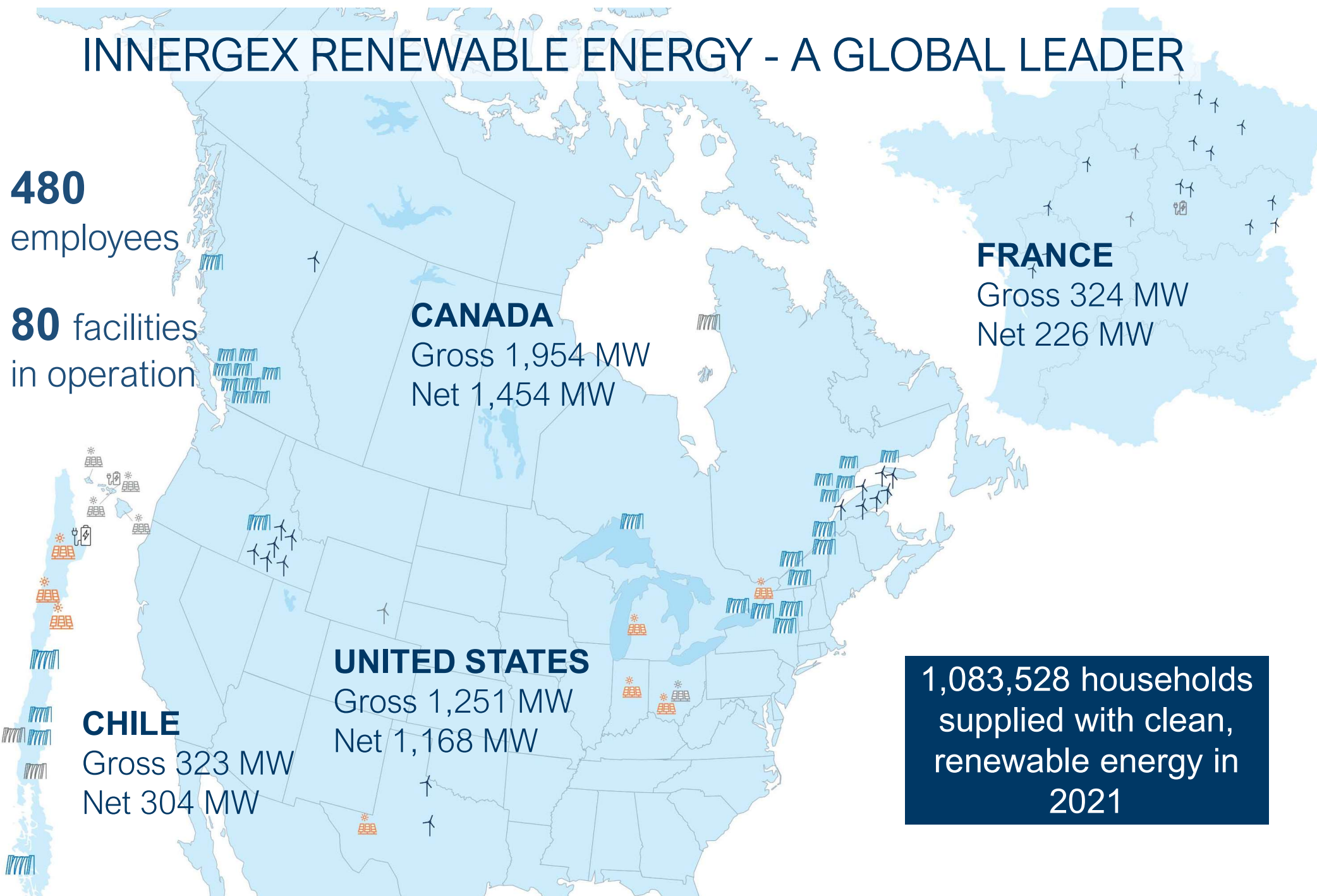
UNITED STATES

Gross 1,251 MW
Net 1,168 MW

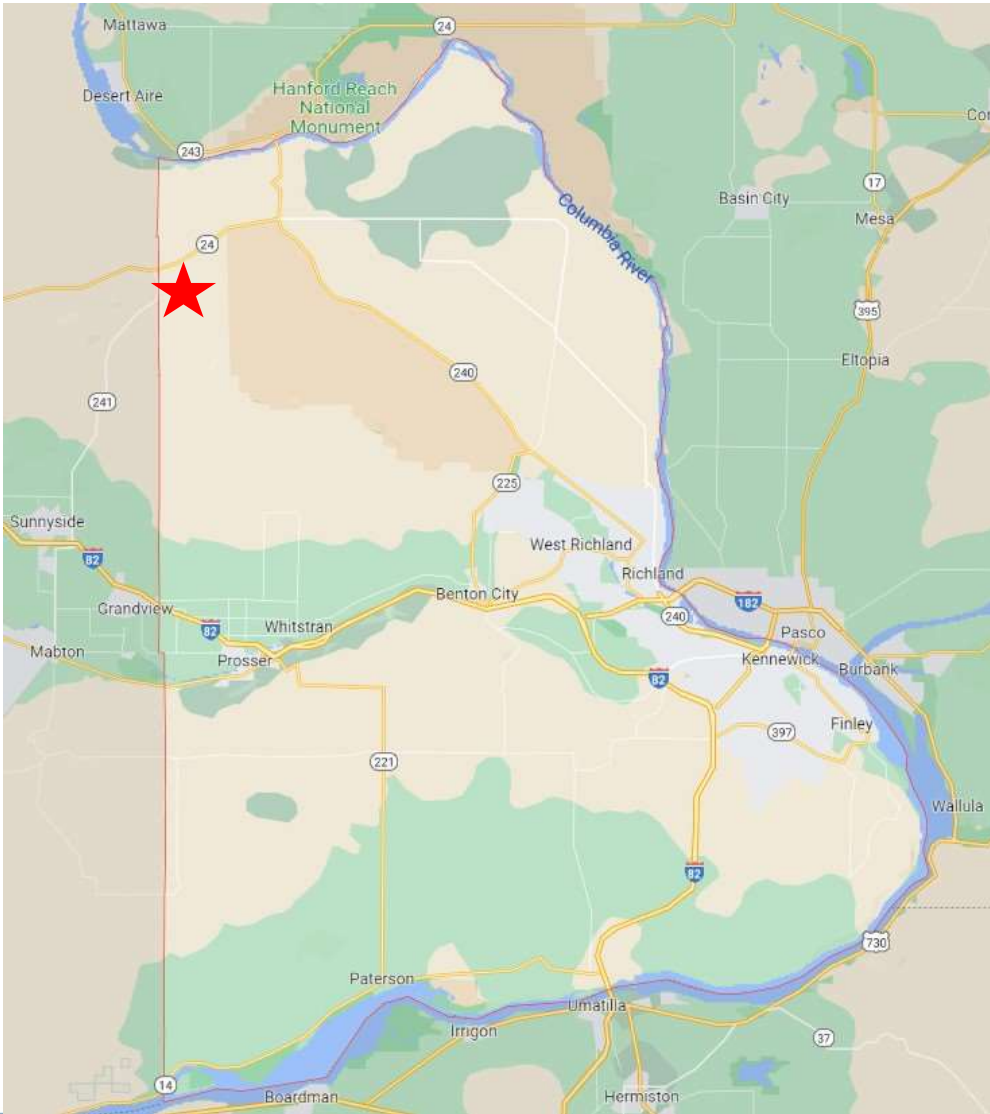
CHILE

Gross 323 MW
Net 304 MW

1,083,528 households
supplied with clean,
renewable energy in
2021



WAUTOMA SOLAR ENERGY PROJECT



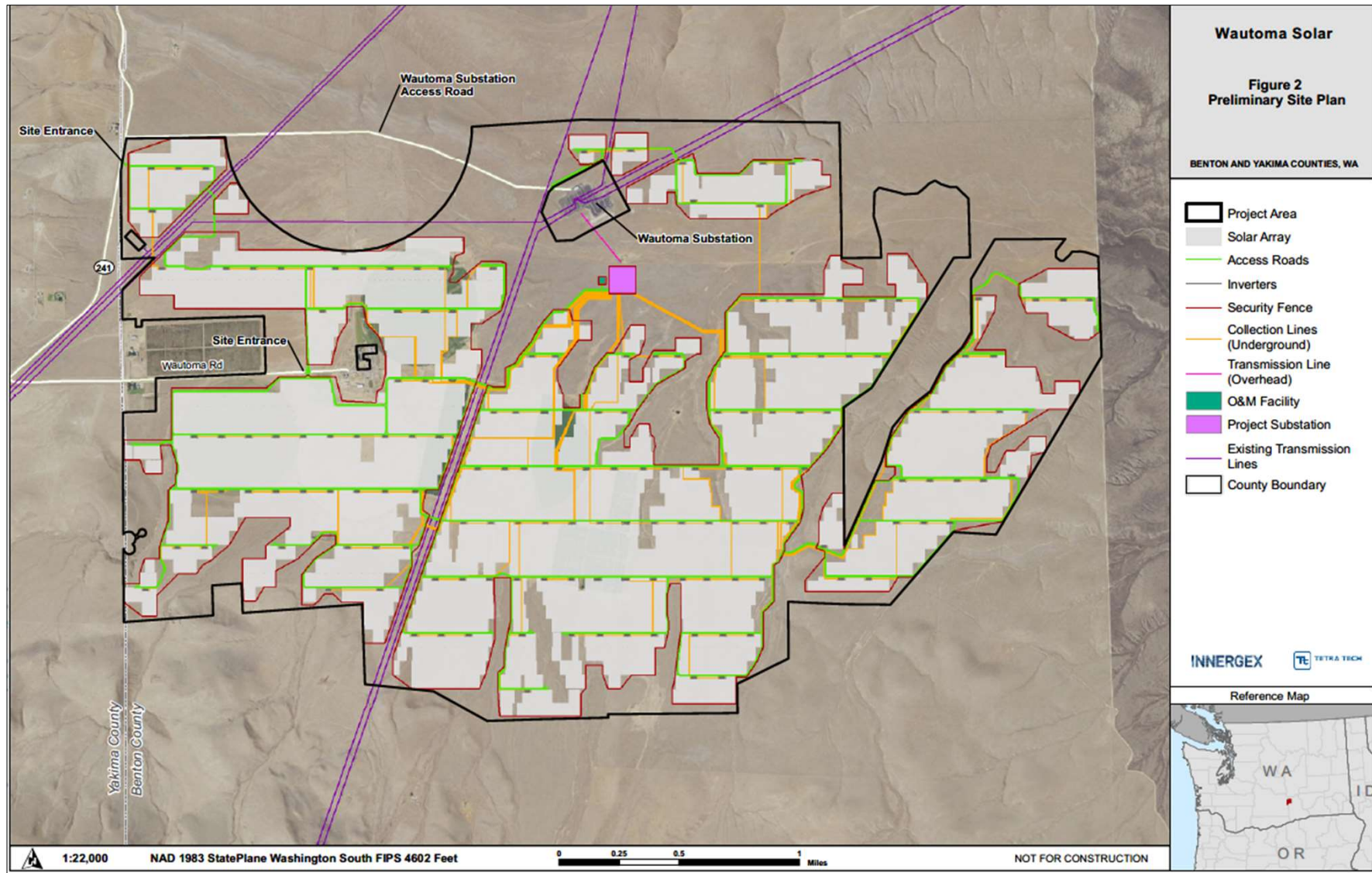
- NW Benton County
- Target of 400MW solar + storage
- 875 GWh; enough to power approx. 70,000 WA households



SITING CONSIDERATIONS



PRELIMINARY LAYOUT



PERMITTING AND STUDIES



Plant and Wildlife
Habitat Surveys

Delineation of
Wetlands and
Waters of the U.S.



Cultural and
Archaeological
Resources
Survey

Visual Impact
Assessment

Geotechnical &
Hydrology Studies

Glint & Glare
Analysis



Acoustic
Assessment

Traffic and
Transportation
Analysis



AVOIDING, MINIMIZING, AND MITIGATING IMPACTS

- Traffic Control Plan
- Vegetation Management Plan
- Habitat Mitigation Plan
- Emergency Response / Fire Response Plan
- Erosion and Sediment Control Plan
- Spill Prevention and Response Plan
- Stormwater Pollution Prevention Plan
- Decommissioning Plan



STAKEHOLDERS

- Agencies (EFSEC, WDFW, Ecology, DAHP)
- Tribal Governments
 - Confederated Tribes and Bands of the Yakama Nation
 - Confederated Tribes of the Warm Springs Reservation of Oregon
 - Samish Indian Nation
 - Wanapum Tribe
 - Confederated Tribes of the Colville Reservation
 - Confederated Tribes of the Umatilla Indian Reservation
- Benton County
- Participating Landowners
- Adjacent Landowners
- General Public



JOBS AND SERVICES



PROJECT BENEFITS

Local Tax
Revenue

Partnership
Agreements

Infrastructure
investments

Community
investment



Part of being a good neighbor means supporting the causes and efforts that have a broader impact in communities.

PROJECT STATUS AND ANTICIPATED SCHEDULE

Q2 2020	Participating Landowner Engagement
Q1 2021	Commencement of Environmental & Cultural Studies
Q2 2022	Community Meetings Start
Q2 2022	Application for Site Certification Submitted to EFSEC (followed by Public Meeting and Land Use Consistency Hearing)
Q2 2023	Large Generation Interconnection Agreement with BPA (Anticipated)
Q3 2023	Site Certification Agreement Issuance (Anticipated)
Q1 2024	Construction Start (Earliest)
Q3 2025	Phase 1 Commercial Operation Date (Earliest)

**COMMUNITY ENGAGEMENT IS ONGOING THROUGHOUT
THE ENTIRE PROCESS**



Renewable Energy.
Sustainable Development.

Thank you!

Reach us at:
loneill@innergex.com
wautomasolar@innergex.com

Website: www.wautomasolar.com

Innergex Renewable Energy

