



High top & Ostrea
CUP
docket #210012
Comment #0003

International Union of Operating Engineers

LOCAL 302 • Washington • Alaska • Idaho • AFL-CIO
Daren Konopaski, Business Manager & General Vice President

1/10/2023

EFSEC
621 Woodland Square Loop
PO Box 43172
Lacey, WA 98503-3172

RECEIVED

JAN 12 2023

ENERGY FACILITY SITE
EVALUATION COUNCIL

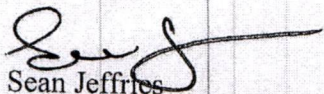
Dear EFSEC Council;

Hello, my name is Sean Jeffries and I am submitting this on behalf of the International Union of Operating Engineers, Local 302.

We are a large part of the community with several hundred members who call Yakima County home. Although some may have individual concerns or beliefs with regard to Solar Farms, Local 302 supports these projects and is strongly committed to partnering toward a goal of responsible development in our community. Local 302 advocates for local hire provisions and local prevailing wage rates for large renewable energy projects like the High Top Project and the Ostrea Project being considered by this Council. Too often projects get approved and awarded to out of state contractors who do not hire from the local community and/or do not pay area standard wage rates and benefits.

Accordingly, we recommend that if this project is approved that the Economic Development Council and this Council work closely with Cypress Creek Renewables to ensure that 1) they pay the local area prevailing wage for all applicable occupations and 2) there is stipulation of a percentage of local hire and state registered apprenticeship utilization on these projects to ensure true economic development for our community.

Thank You,


Sean Jeffries
President/District Representative
IUOE Local 302
403 S Water St
Ellensburg, WA 98926

cc: Cypress Creek Renewables

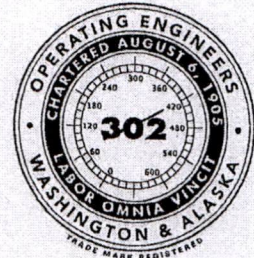
Sean Jeffries, President • Jason Alward, Vice President

18701 120th Avenue NE • Bothell, Washington 98011-9514

Telephone: (425) 806-0302 • Toll-free: 1-800-521-8882 • Fax: (425) 806-0030

Washington Branches: Bellingham • Silverdale • Ellensburg • Spokane • Pasco Alaska Branches: Anchorage • Fairbanks • Juneau Idaho Branch: Bonanza

LOCAL 302 SIGNATORY CONTRACTORS



Civil Contractors that work Central-WA:

Ascent Excavation	Cle Elum, WA	Vince Glondo	509-674-8211
Ken Leingang Exc. Inc.	Yakima, WA	Pat or Darren	509-575-5507
Interwest (ICI)	Burlington/Yakima	Roy Swihart	360-899-9628
Advantage Dirt Contractors	Kittitas, WA	Jason Miller	509-933-4232
Capstone Structures	Quincy, WA	Coty O'Neel	509-398-5099
Olin Excavation	Entiat, WA	James Olin	509-470-2696
Apollo Inc	Kennewick, WA	Dave Haight	509-586-1104
Total Site Services	Richland, WA	Landon	509-371-1000
Pacific Civil Infrastructure (PCI) Ellensburg		Andy Albrecht	253-874-3965
Granite Construction	Yakima/Wenatchee	Jerry Walker	509-454-8568
Scarsella Brothers Inc.	Seattle/Lind	Bob Scarsella	253-872-7173
NA Degerstom	Spokane, WA	Ryan West	509-928-3333
WHH Nisqually	Nisqually/Yakima	Chris Hanson	253-606-3008
Goodfellow Bros. Inc.	Wenatchee, WA	Ron Jordan	509-662-7111
KLB Construction	Mukilteo, WA		425-355-7335
SCI Infrastructure, LLC	Seattle, WA	Tyson	206-242-0633
Gary Merlino		Jason Struelli	425-508-2787
Active (ACI)	Tacoma	Chris Roberts	253-606-2288
<u>Other Contractors</u>			
Knobel Electric	Yakima, WA	Steve	509-452-9157
Stetner Electric	Quincy, WA	Brian	509-787-9109
Ralph's Concrete Pumping	Ellensburg/Wenatchee	Travis	509-929-4052

* This list is just some of our signatory contractors. If you need more or have a question about others, please contact me at 509-933-3020.



**INTERNATIONAL UNION OF
OPERATING ENGINEERS LOCAL 302**
WASHINGTON • ALASKA • IDAHO

SEAN JEFFRIES

President and District 4 Representative

Cell (509) 307-7059
Fax (509) 933-3028
sjeffries@iuoe302.org
www.iuoe302.org

DISTRICT 4 OFFICE
403 S. Water St.
Ellensburg, WA 98926
(509) 933-3020



International Union of Operating Engineers

LOCAL 302 • Washington • Alaska • Idaho • AFL-CIO

Daren Konopaski, *Business Manager & General Vice President*

1/10/2023

Cypress Creek Renewables
3402 Pico Blvd
Santa Monica, CA 9045

To CCR Project Team;

Hello, my name is Sean Jeffries with the International Union of Operating Engineers Local 302. I submitted a letter to EFSEC in regards to responsible economic development within our community, reiterating the same principles you submitted to them as your Ostrea Community Workforce Agreement.

Therefore I wanted to include my business card and a list of Local 302 Signatory Contractors that could help your team once the projects are approved. This list is a short list of the most common Contractors who work in the Central Washington area, either consistently or periodically. These Contractors do pay area standard prevailing wages, they also have local hire and are state registered training agents for Apprentices. A few are also registered as tribal, women and/or minority owned Companies which you also mentioned in your application for the High Top and Ostrea projects in Yakima County.

Please reach out to me if you have any questions or I maybe able to help with more information.

Thanks,

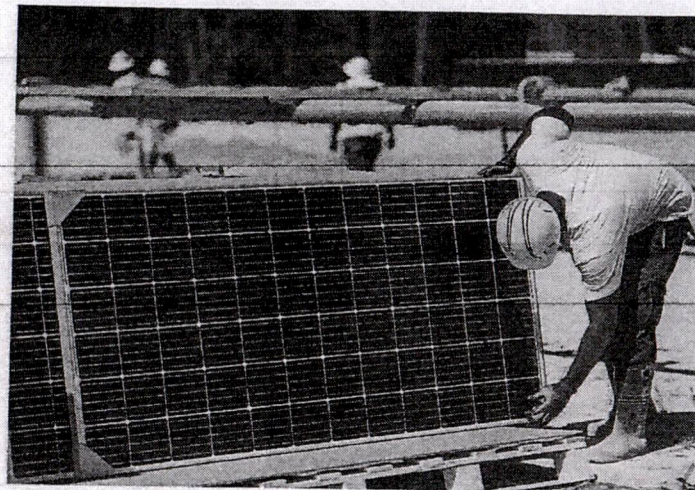
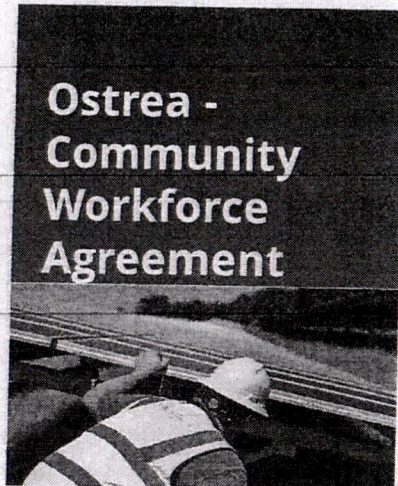
Sean Jeffries
President/District Representative
IUOE Local 302
403 S Water St
Ellensburg, WA 98926
509-307-7059 cell
sjeffries@iuoe302.org

Sean Jeffries, *President* · Jason Alward, *Vice President*

18701 120th Avenue NE · Bothell, Washington 98011-9514

Telephone: (425) 806-0302 · Toll-free: 1-800-521-8882 · Fax: (425) 806-0030

Washington Branches: Bellingham · Silverdale · Ellensburg · Spokane · Pasco Alaska Branches: Anchorage · Fairbanks · Juneau Idaho Branch: Pocatello



Ostrea Community Workforce Agreement

Ostrea (Project Specific) Community Workforce Agreement	<ul style="list-style-type: none"> CCR will be providing jobs with full prevailing wage through the Community Workforce Agreements (CWA) with apprenticeship Preferred entry for workers living near the project area CCR and EPC contractor will be responsible for outreach in the area and securing employment diversity CCR will be making an intentional outreach effort to obtain bids from EPC contractors that are women, minority, disabled, and/or veteran owned.
---	---

CCR's Commitment to Community Engagement & Workforce Development

Project Labor	<ul style="list-style-type: none"> Preferred entry for workers living in the project areas Option for full prevailing wage or negotiating a multi-craft Project Labor Agreement (PLA) with apprenticeship High likelihood of utilization of unionized labor for electricians as a minimum
Apprenticeship & Workforce Development	<ul style="list-style-type: none"> Sponsorship of nine community college programs across the country, providing scholarship and tuition assistance for students CCR has sponsored a scholarship at OIT - a technical college with campuses in Oregon and Washington - for the past three years and is looking to expand this partnership program moving forward CCR has offered a summer internship program since 2017, providing opportunities for underrepresented groups to enter the renewables industry CCR is a member of Renewables Forward; partnering with other firms to foster diversity across the clean tech and renewables industries
Diversity, Equity, & Inclusion	<ul style="list-style-type: none"> Deliberate efforts to find and include women, minority and veteran owned businesses in our procurement process and as approved vendors for development, EPC, asset management and O&M service



INTERNATIONAL UNION OF OPERATING ENGINEERS LOCAL 302 WASHINGTON • ALASKA • IDAHO

JOSH SWANSON

Political & Communications Representative

Office (425) 806-0302
Toll-free 1-800-521-8882
FAX (425) 806-0030
Cell (206) 293-8350

OLYMPIA OFFICE
1509 Columbia ST SW
Olympia, WA 98501
jswanson@iuoe302.org

Local 302 website: www.iuoe302.org



WA – Peninsula

3525 NW Anderson Hill Rd.
Silverdale, WA 98383
Office 360-307-0557
Dispatch Fax 360-613-0216
SilverdaleDispatch@iuoe302.org

WA – Ellensburg

403 S. Water Street
Ellensburg, WA 98926
Office 509-933-3020
Dispatch Fax 509-933-3028
EllensburgDispatch@iuoe302.org

WA – Spokane

510 South Elm
Spokane, WA 99201
Office 509-624-5365
Dispatch Fax 509-624-5554
SpokaneDispatch@iuoe302.org

**MAIN OFFICE**

18701 120th Avenue NE
Bothell, WA 98011-9514
Office 425-806-0302
Toll Free 1-800-521-8882
BothellDispatch@iuoe302.org

WA – Pasco

2011 W Yakima St
Pasco, WA 99301
Office 509-545-1811
Dispatch Fax 509-545-1812
PascoDispatch@iuoe302.org

ID – Pocatello

456 N Arthur
Pocatello, ID 83204
Office 208-232-8492
Dispatch Fax 208-232-8493
PocatelloDispatch@iuoe302.org

AK – Anchorage

4001 Denali St, Suite A
Anchorage, AK 99503
Office 907-561-5288
Dispatch Fax 907-563-4571
AnchorageDispatch@iuoe302.org

AK – Fairbanks

3002 Lathrop Street
Fairbanks, AK 99701
Office 907-452-8131
Dispatch Fax 907-452-1434
FairbanksDispatch@iuoe302.org

AK – Juneau

9309 Glacier Hwy., Suite A-105
Juneau, AK 99801
Office 907-586-3850
Dispatch Fax 907-463-5464
JuneauDispatch@iuoe302.org