



A leading solar and storage energy company that develops, owns and operates projects across the United States

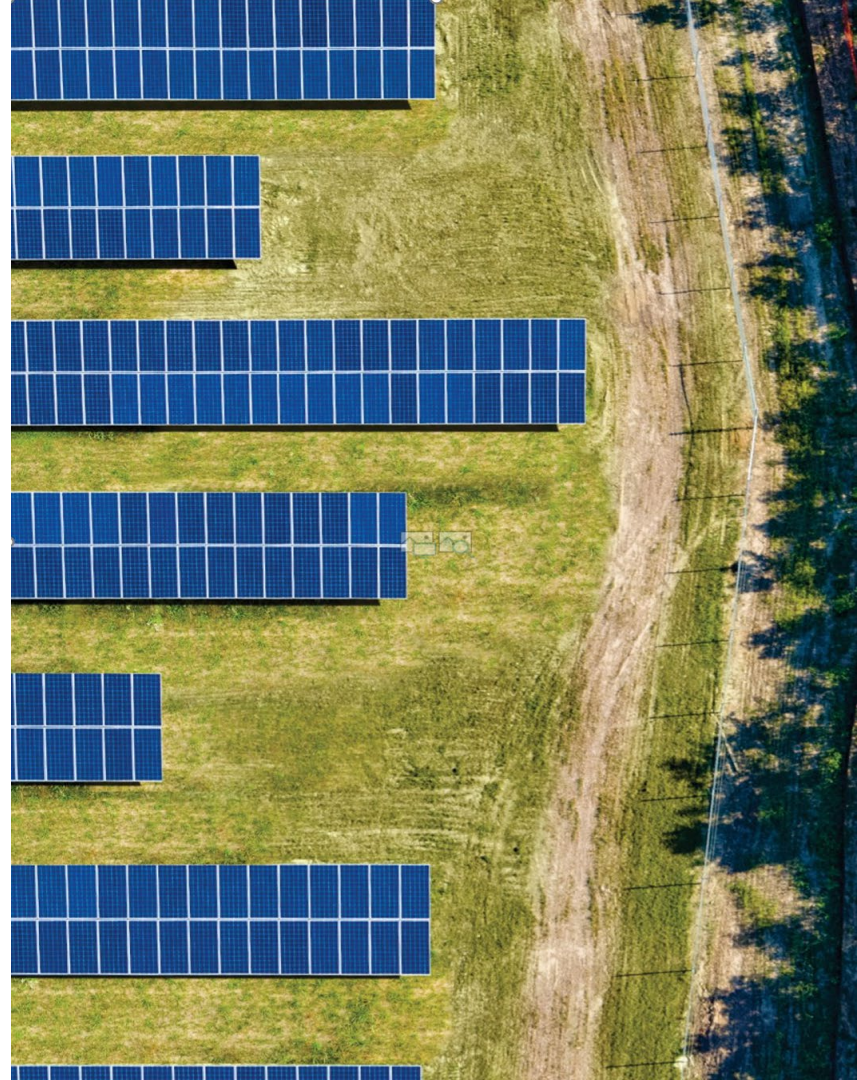
**Public
Information
Hearing**

Ostrea Solar, LLC and High Top Solar, LLC

June 1, 2022

Agenda

1. Meet the Project Team
2. Cypress Creek Renewables – Our Business
3. Ostrea Solar, LLC Project Introduction
4. High Top Solar, LLC Project Introduction
5. Questions and Discussion
6. Appendix – Application for Site Certification Site Plan Sheets



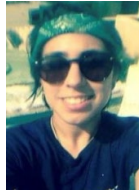
Meet The Project Team

Cypress Creek Renewables – Website: ccrenew.com

Powering A Sustainable Future, One Project At A Time



**Sr. Development
Director**
CCR
Tai Wallace



**Project
Developer**
CCR
Jess Mosleh



**Environmental
Director**
CCR
Seija Stratton



**Sr. Environmental
Manager**
CCR
Julie Alpert



**Consultant –
Project Manager**
TRC
Erin Bergquist



Solar and Storage Growth

Our projects make the energy transition possible



Solar is the most cost-effective form of new generation, with costs declining by more than 70% in the past decade¹



Solar was the largest source of new generating capacity in 2020 and 324GW is expected to be built over the next decade²



Battery storage technology costs have decreased by >80% over the past 10 years³



Battery storage is growing rapidly in the US, with utility-scale battery storage to more than quadruple in 2021 to 4.3GW of battery power capacity⁴



SPOTLIGHT

Corporations Push To Decarbonize The Grid



Corporations are a major driver of solar energy growth. Cypress Creek and Starbucks have teamed up on two solar projects in Texas that are now producing enough energy to power 360 Starbucks stores annually.

"At Starbucks, we are proud of our 30-year legacy in environmental leadership as we know the planet is our most important partner. Our long-standing commitment to renewable energy supports our greener retail initiative and demonstrates our aspiration to sustainably coffee, served sustainably. Now, we are investing in new, renewable energy projects in our store communities, which we know is something our partners and customers can appreciate for their local economy and for the environment."

Rebecca Zimmer, Director of Global Environmental Impact, Starbucks

¹ SEIA/Wood Mackenzie Power & Renewables U.S. Solar Market Insight 2020 Year in Review

² SEIA/Wood Mackenzie Power & Renewables U.S. Solar Market Insight 2020 Year in Review

³ NREL, Jan. 2020

⁴ EIA, Jan. 2021

Our Values

Our values guide our work with stakeholders



Our 5 Cs are our guideposts as we work across hundreds of individual projects

Care

We take care to be safe. We care for the well-being of our team, our communities and the environment and we carefully deploy our resources.

Courage

We take smart risks, we speak up and we make decisions. We learn and constantly improve.

Conviction

We are committed to making the world cleaner and healthier. We do the right thing when our values are challenged.

Creativity

We innovate to create valuable projects. We embrace new ideas and find solutions to hard problems.

Collaboration

We come from different backgrounds to do our work together as one team.

SPOTLIGHT

Caring for Communities



In response to the COVID-19 pandemic, Cypress Creek team members raised \$70,000 to support organizations in our communities working to address hunger and support hospital workers.

In Orangeburg County, SC where Cypress Creek operates 317MW of solar projects, we supported the volunteer-based organization Into the Mouth of Babes.

"Your donations and match will pay for over 1,300 bags of food for the elementary children in the Orangeburg School District... We rely totally on the donations of caring people like you and your employees to fund our mission. We are proud to say 100% of all funds donated are used to purchase food. All administrative costs are donated by our very committed board."

Melissa Cain, Executive Director, Into the Mouth of Babes

CORE COMPETENCIES

We are a fully integrated platform, from development to operations

FLEET OWNERSHIP

- 1.6GW portfolio spanning 211 projects, 14 states
- Stable and recurring operating cash flows

ASSESSMENT MANAGEMENT SERVICES

- 2.4GW of projects under management
- **Value creation** for internal fleet and customers
- Contractual and regulatory compliance



DEVELOPMENT

- **11.6GW of solar energy projects developed** to date
- Selective market entry based on **policy-driven strategy**
- **Diversified experience** with both transmission and community solar and storage

O&M SERVICES

- Services for internal fleet and customers
- 3.9GW of projects under management
- State-of-the-art NERC-registered Control Center with **24 / 7 / 365 operations**

Holistic Approach to Health, Safety,
Security and Environment

Projects Developed

We develop solar and storage projects of all shapes and sizes



Neff, Oregon | 11MWac



Wagyu, Texas | 124MWac



IS37, North Carolina | 85MWac

Ostrea Solar, LLC

Project Overview

Project Characteristics

Site: 80 MWac / 104 MWdc PV

Battery Energy Storage System: 40MW X 160MW/hr (optional)

Location: Yakima County, Washington

Interconnection Utility: Bonneville Power Administration (BPA)

Offtake: Fully executed Purchase Power Agreement with Washington-based commercial counterparty

Commercial Operation Date: 2024

Site Control:
Area: 1,686 acres under definitive site control with all easements secured.

Project Status

Development Item	Description	Status
Site Control	<ul style="list-style-type: none"> 1,686 acres under site control with all easements secured; no gen-tie needed 	Complete
Interconnection and Transmission	<ul style="list-style-type: none"> BPA Facility Study in process BPA E&P Agreement and IA expected 2022 PAC Affected Facility Study received Facility Construction Agreement expected being tendered Long-term Firm Transmission Service Rights Granted 	In Progress
Survey	<ul style="list-style-type: none"> Topographic and ALTA boundary survey complete 	Complete
Engineering	<ul style="list-style-type: none"> Geotechnical study and Hydrologic & Hydraulic assessment complete 	Complete
Zoning	<ul style="list-style-type: none"> Permitting through WA Energy Facility Site Evaluation Council (EFSEC) Application for Site Certification submitted Requested Expedited Solar Process review 	In Progress
Title	<ul style="list-style-type: none"> Preliminary title commitments received Mineral curative complete pending title company acceptance 	Complete
State Environmental Policy Act	<ul style="list-style-type: none"> All initial species and cultural surveys completed; additional rare plants and cultural resources survey results and wildlife connectivity analysis pending 	Complete
Wetlands Delineation / USACE Concurrence	<ul style="list-style-type: none"> Wetland delineation complete, pending WA Dept of Ecology site visit 	In Progress
National Environmental Policy Act	<ul style="list-style-type: none"> Regulatory assessment report completed; No Federal nexus identified 	Complete
Taxes	<ul style="list-style-type: none"> Project specific tax memo and model complete 	Complete
Procurement and Construction	<ul style="list-style-type: none"> EPC RFP in process with Community Workforce Agreement requirement Modules and transformer procured 	In Progress



Complete



In Progress

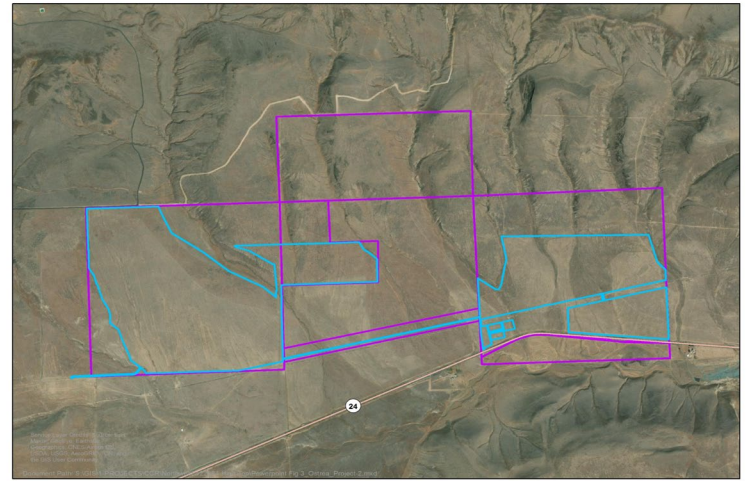
Project Images



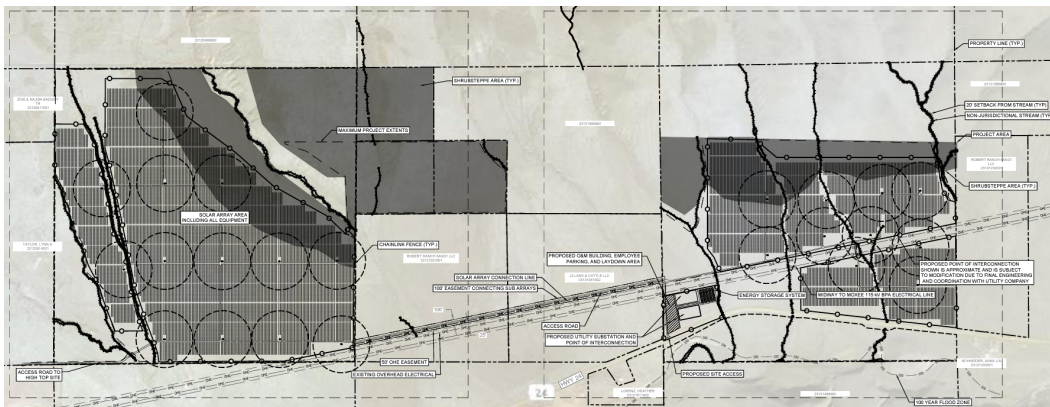
Ostrea - Environmental Studies

Studies Completed for the EFSEC ASC

Topic	Report Name
Land Use	Ostrea Land Use Consistency Review
Rare Plants	Ostrea Rare Plants Report and Addendum
Habitat Mapping	Ostrea General Wildlife Surveys Report
Wildlife	Ostrea General Wildlife Surveys Report
Wildlife Connectivity Analysis	Ostrea General Wildlife Surveys Report Addendum
Habitat Restoration And Mitigation Plan	Ostrea Habitat Restoration and Mitigation Plan
Wetlands	Ostrea Wetland and Waterbody Delineation Report
Hydrology and Hydraulics Analysis	Ostrea Preliminary Hydrologic and Hydraulic Assessment
Cultural Resources	Ostrea Cultural Resources Report and Addendum
Earth	Ostrea Draft Geotechnical Report
Glare	Ostrea Glint and Glare Analysis and Solar Glare Reports
Airspace	Ostrea Determination of No Hazard Letters



Ostrea - Consultation and Outreach



Consultation, Coordination and Notification with Local, State, Tribal, and Federal Agencies

Agencies	
Department of Archaeology and Historic Preservation	Bonneville Power Administration
Department of Ecology	Confederated Tribes and Bands of the Yakama Nation
Washington Department of Fish and Wildlife	Confederated Tribes of the Warm Springs Reservation of Oregon
Washington State Department of Transportation	Department of Defense
Energy Facility Site Evaluation Council	U.S. Army Corps of Engineers
Yakima County Planning Department	U.S. Fish and Wildlife Service
Yakima County Fire Marshal	Yakima Regional Clean Air Agency
City of Yakima	Yakima County Weed Control Board

Ostrea - Community Workforce Agreement



Ostrea Community Workforce Agreement

Ostrea (Project Specific) Community Workforce Agreement

- CCR will be providing jobs with full prevailing wage through the Community Workforce Agreements (CWA) with apprenticeship
- Preferred entry for workers living near the project area
- CCR and EPC contractor will be responsible for outreach in the area and securing employment diversity
- CCR will be making an intentional outreach effort to obtain bids from EPC contractors that are women, minority, disabled, and/or veteran owned.

CCR's Commitment to Community Engagement & Workforce Development

Project Labor

- Preferred entry for workers living in the project areas
- Option for full prevailing wage or negotiating a multi-craft Project Labor Agreement (PLA) with apprenticeship
- High likelihood of utilization of unionized labor for electricians as a minimum

Apprenticeship & Workforce Development

- Sponsorship of nine community college programs across the country, providing scholarship and tuition assistance for students
- CCR has sponsored a scholarship at OIT - a technical college with campuses in Oregon and Washington - for the past three years and is looking to expand this partnership program moving forward
- CCR has offered a summer internship program since 2017, providing opportunities for underrepresented groups to enter the renewables industry
- CCR is a member of Renewables Forward; partnering with other firms to foster diversity across the clean tech and renewables industries

Diversity, Equity, & Inclusion

- Deliberate efforts to find and include women, minority and veteran owned businesses in our procurement process and as approved vendors for development, EPC, asset management and O&M service

High Top, Solar LLC

Project Overview

Project Characteristics

Site: 80 MWac / 104 MWdc

**Battery Energy Storage
System:** 40MW/160MWh

Location: Yakima County, Washington

Interconnection Utility: PacifiCorp

Offtake: Pending

Commercial Operation Date:
2024

Site Control:
Area: 1,564 acres under site
control. No easements needed.

Project Status

Development Item	Description	Status
Site Control	<ul style="list-style-type: none">1,564 acres under site control. No gen-tie or easements needed	Complete
Interconnection	<ul style="list-style-type: none">Interconnection Agreement executed	Complete
Survey	<ul style="list-style-type: none">Topographic and ALTA boundary survey complete	Complete
Engineering	<ul style="list-style-type: none">Geotechnical study and Hydrologic & Hydraulic assessment complete	Complete
Zoning	<ul style="list-style-type: none">Permitting through WA Energy Facility Site Evaluation Council (EFSEC)Application for Site Certification submittedRequested Expedited Solar Process review	In Progress
Title	<ul style="list-style-type: none">Preliminary title commitments receivedMineral curative in process	In Progress
State Environmental Policy Act	<ul style="list-style-type: none">All initial species and cultural surveys completed; additional rare plants and cultural resources survey results and wildlife connectivity analysis pending	In Progress
Wetlands Delineation / USACE Concurrence	<ul style="list-style-type: none">Wetland delineation complete, pending WA Dept of Ecology site visit	In Progress
National Environmental Policy Act	<ul style="list-style-type: none">Regulatory assessment report completed; No Federal nexus identified.	Complete
Taxes	<ul style="list-style-type: none">Project specific tax memo and model complete	Complete
Procurement and Construction	<ul style="list-style-type: none">Transformer procured and under construction	In Progress



Complete



In Progress

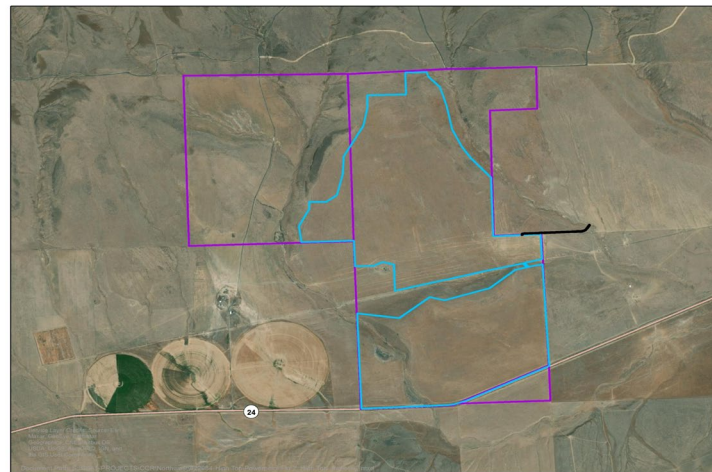
Project Images



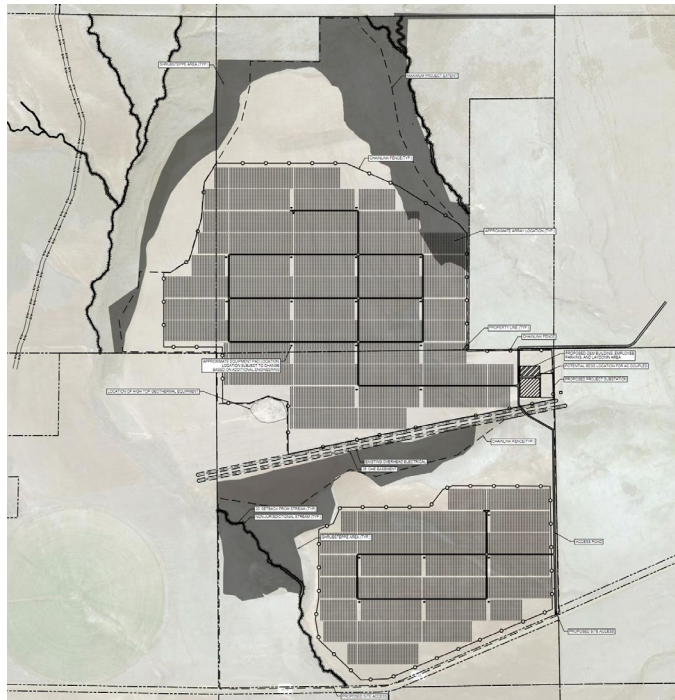
High Top - Environmental Studies

Studies Completed for the EFSEC ASC

Topic	Report Name
Land Use	High Top Land Use Consistency Review
Rare Plants	High Top Rare Plants Report
Habitat Mapping	High Top General Wildlife Surveys Report
Wildlife	High Top General Wildlife Surveys Report
Wildlife Connectivity Analysis	High Top General Wildlife Surveys Report Addendum
Habitat Restoration And Mitigation Plan	High Top Habitat Restoration and Mitigation Plan
Wetlands	High Top Wetland and Waterbodies Delineation Report
Hydrology and Hydraulics Analysis	High Top Preliminary Hydrologic and Hydraulic Assessment
Cultural Resources	High Top Cultural Resources Report
Earth	High Top Draft Geotechnical Report
Glare	High Top Glint and Glare Analysis and Solar Glare Reports
Airspace	High Top Determination of No Hazard Letters



CYPRESS CREEK RENEWABLES ©2022



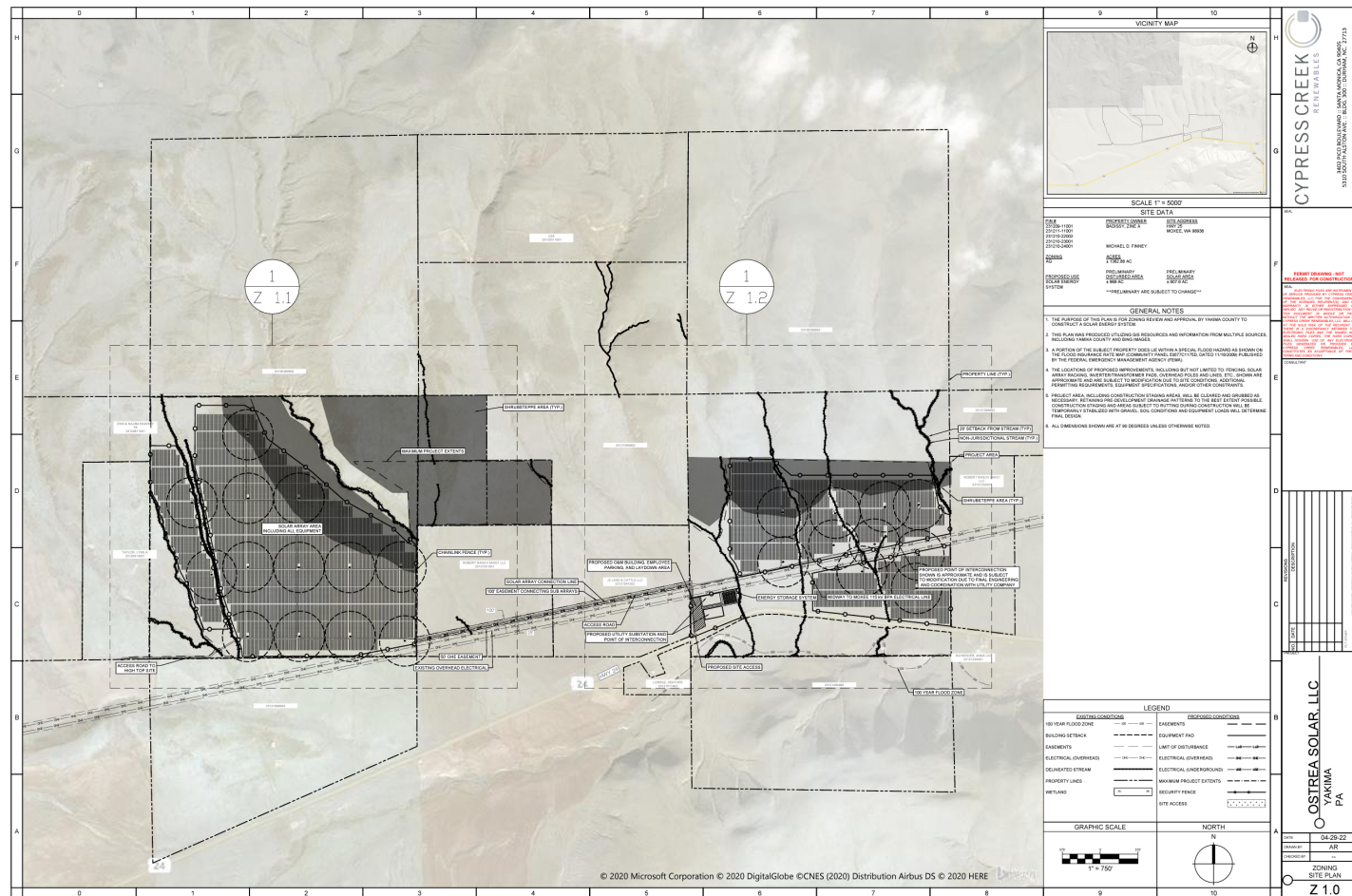
Agencies	
Department of Archaeology and Historic Preservation	Bonneville Power Administration
Department of Ecology	Confederated Tribes and Bands of the Yakama Nation
Washington Department of Fish and Wildlife	Confederated Tribes of the Warm Springs Reservation of Oregon
Washington State Department of Transportation	Department of Defense
Energy Facility Site Evaluation Council	U.S. Army Corps of Engineers
Yakima County Planning Department	U.S. Fish and Wildlife Service
Yakima County Fire Marshal	Yakima Regional Clean Air Agency
City of Yakima	Yakima County Weed Control Board



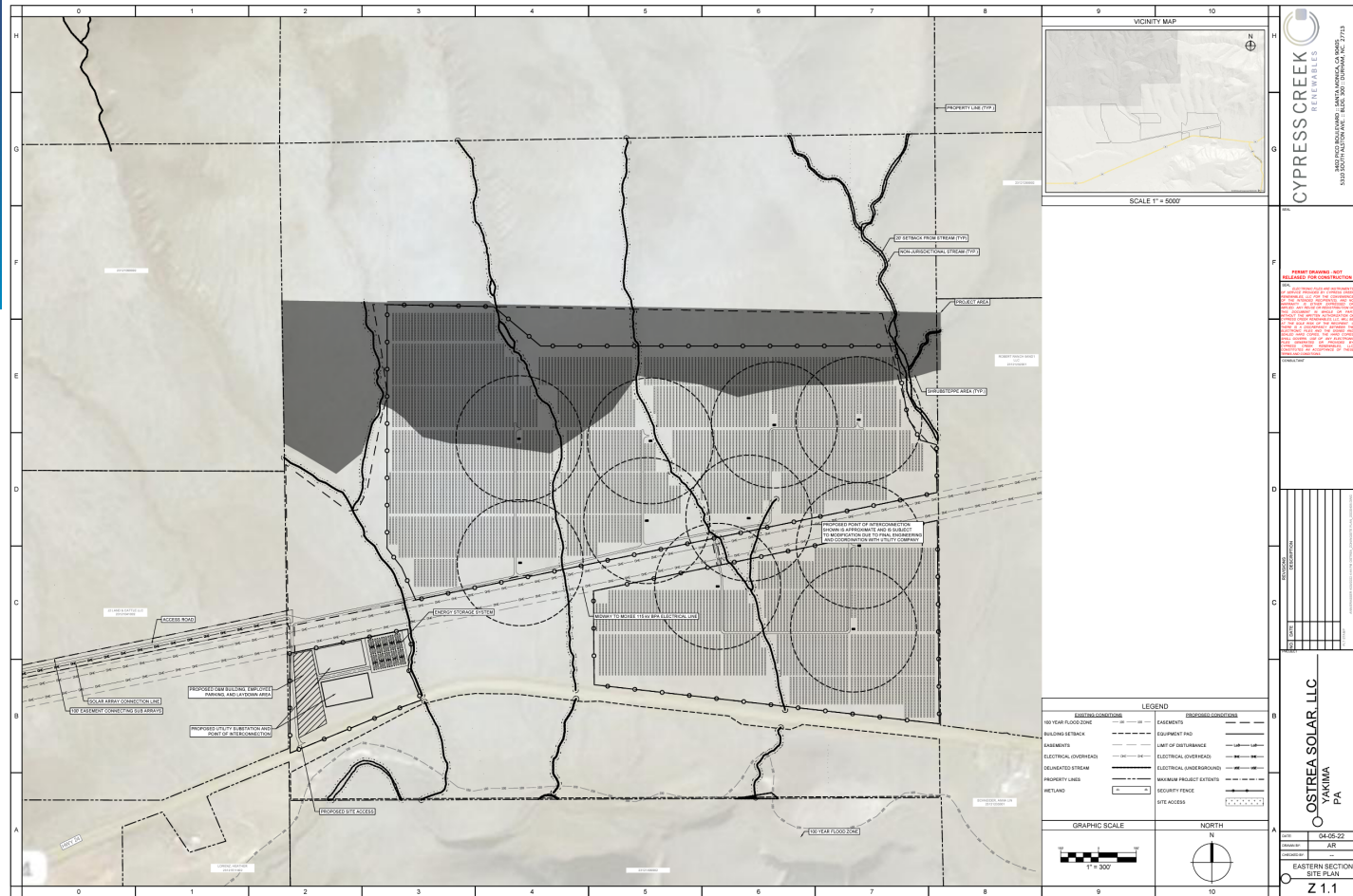
Questions and Discussion

Appendix

ASC Site Plan Summary Sheet

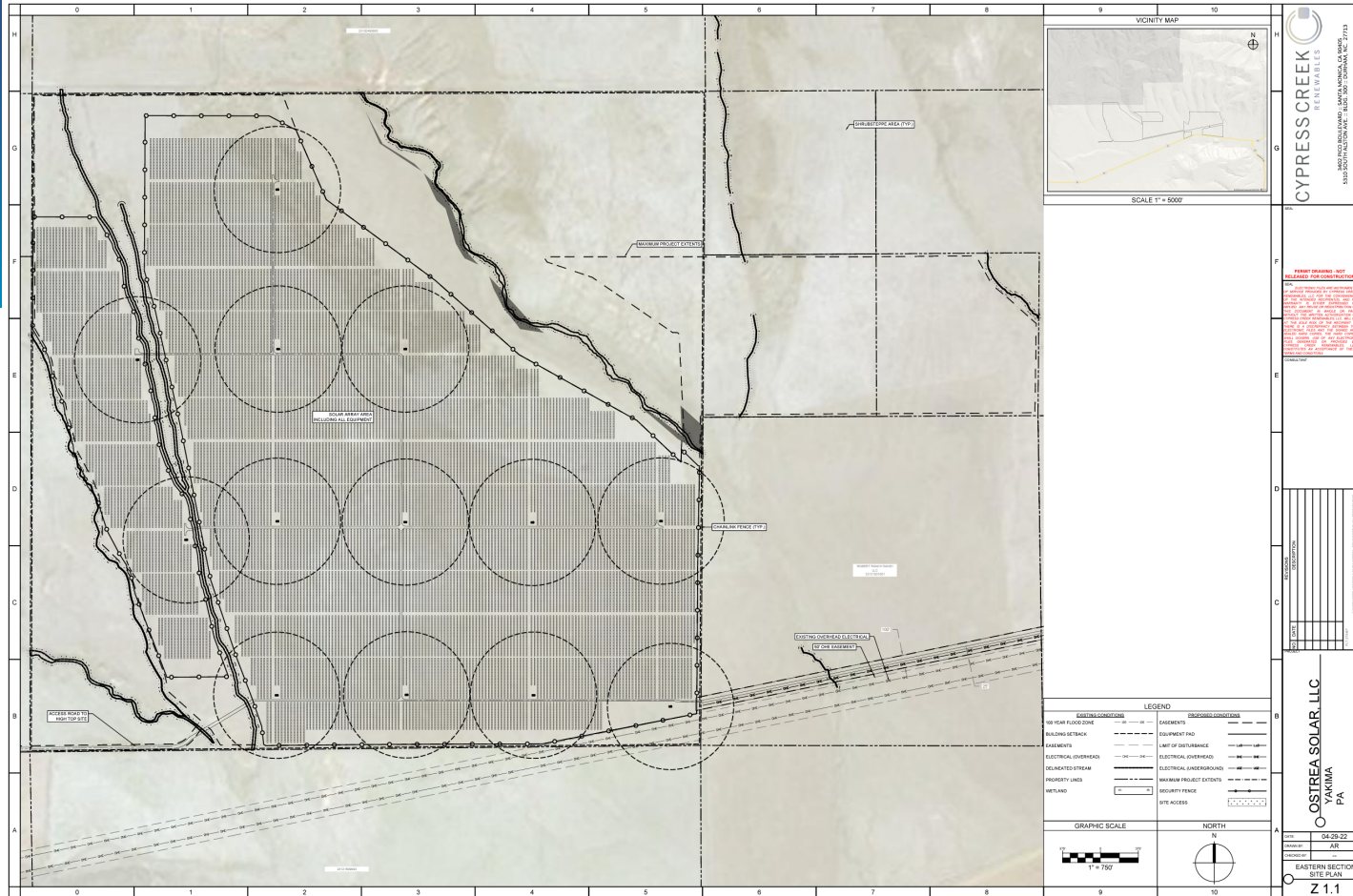


ASC Site Plan Detail Sheet East

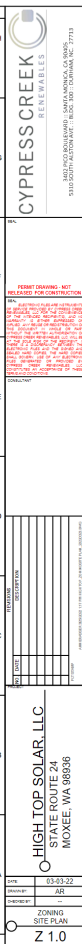


Ostrea Solar, LLC

ASC Site Plan Detail Sheet West



ASC Site Plan Summary Sheet



Thank you.

CYPRESS CREEK
RENEWABLES 