

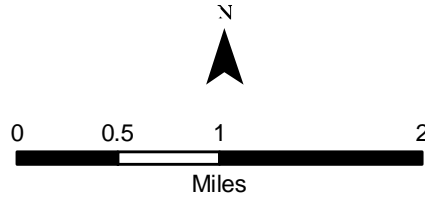
Goose Prairie Solar Project

Figure A-1  
Project Vicinity

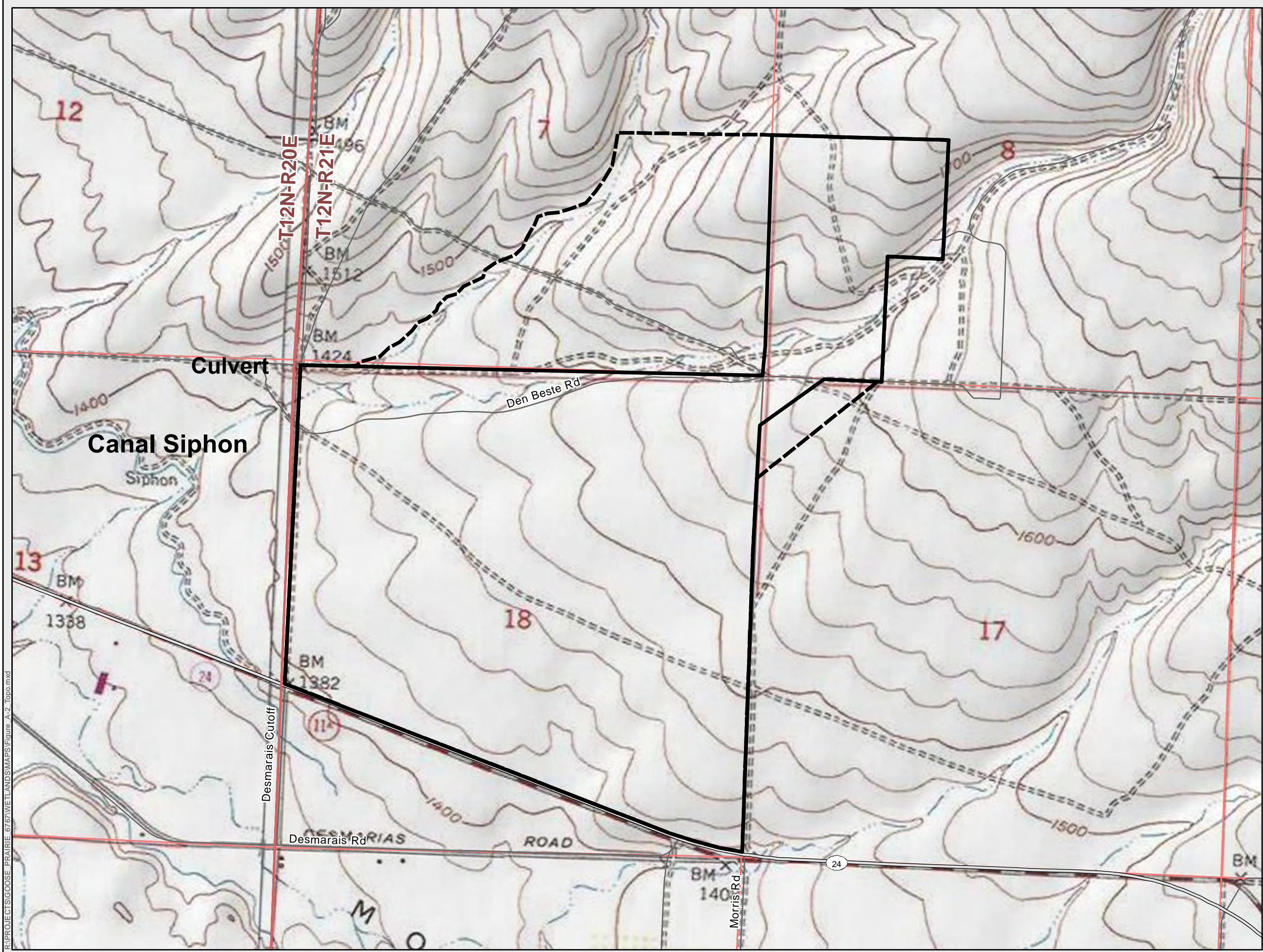
Yakima County, Washington

- Project Study Area
- Expanded Project Study Area
- Town
- River
- Interstate
- Highway

NWS-2021-189  
19 February 2021  
1 of 10  
46.5352, -120.2311







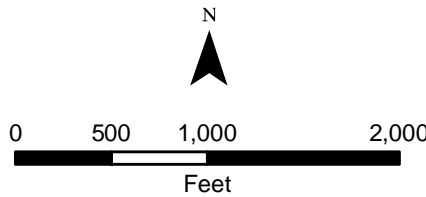
Goose Prairie Solar Project

Figure A-2  
Topographic Map

Yakima County, Washington

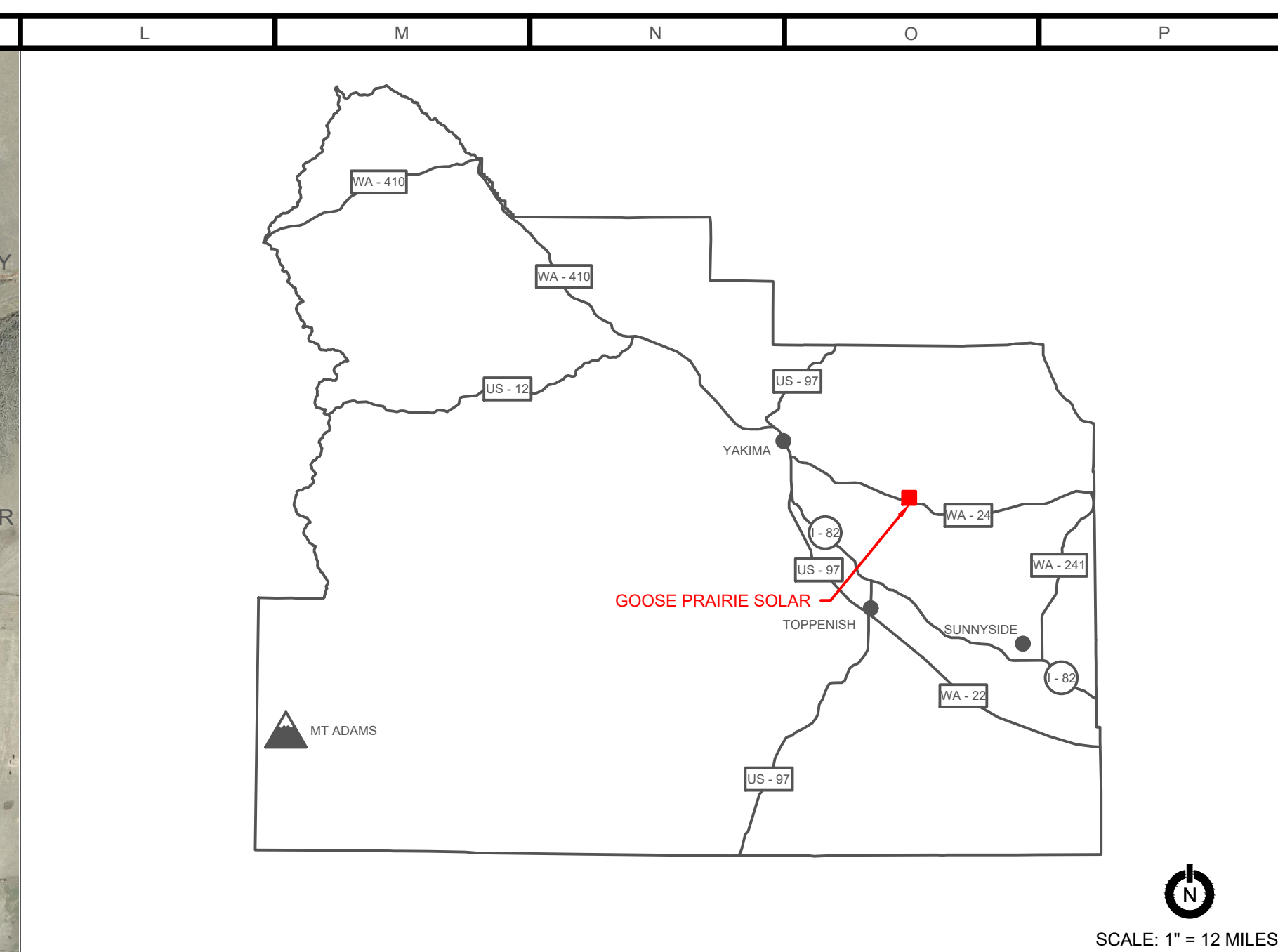
- Project Study Area
- Expanded Project Study Area
- PLSS Township/Range
- PLSS Section
- Highway
- Local Road

NWS-2021-189  
19 February 2021  
2 of 10  
46.5352, -120.2311



R:\PROJECTS\GOOSE PRAIRE 6767\WELAND\SWAPS\Figure A-2\_Topo.mxd

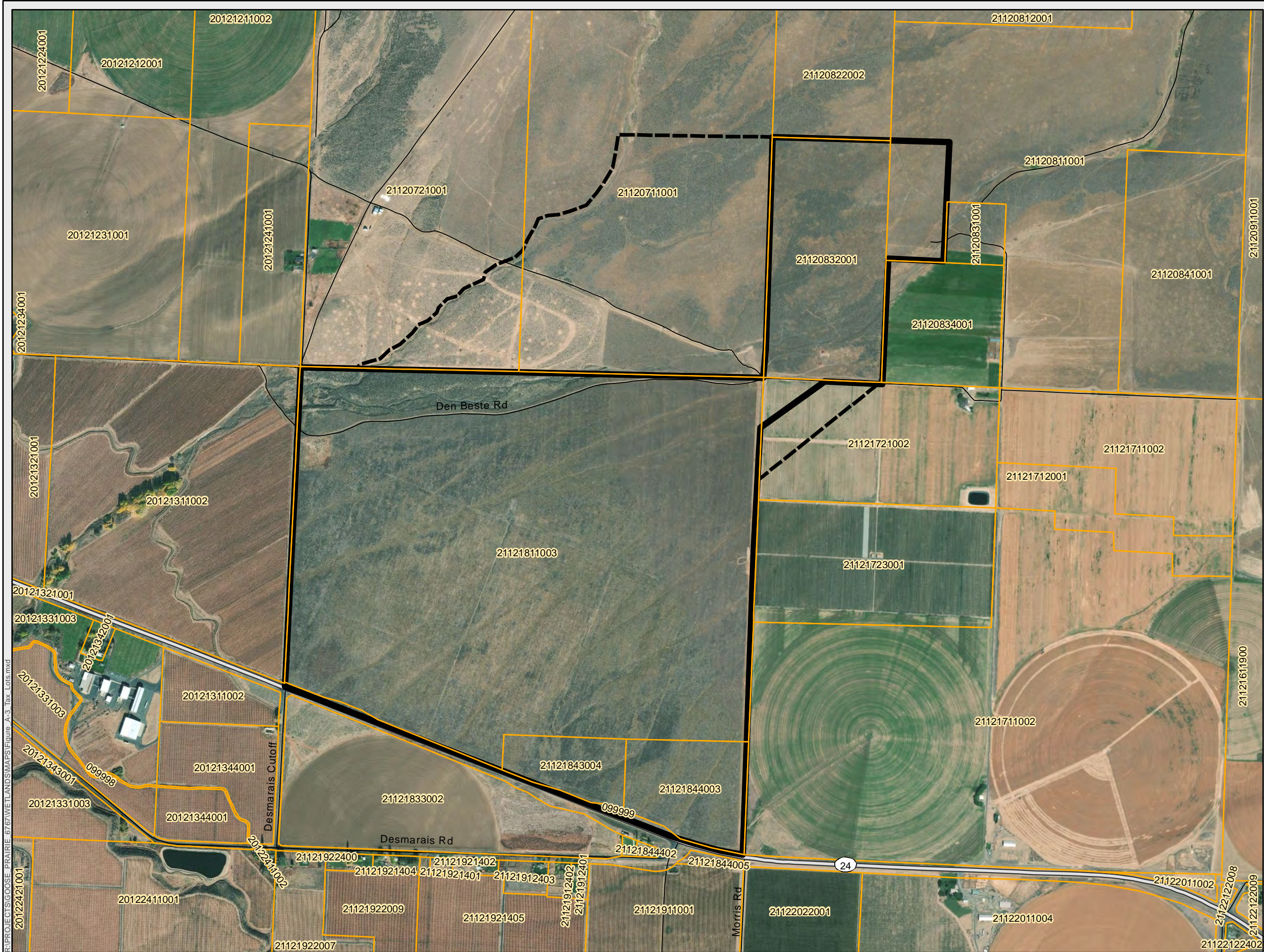




WRITTEN DIMENSIONS ON THIS PLAN SHALL SUPERCEDE SCALE DIMENSIONS. CONTRACTORS ARE RESPONSIBLE FOR FIELD VERIFYING ALL DIMENSIONS. THIS DRAWING, DESIGN, CONCEPT AND ARRANGEMENT REMAIN THE PROPERTY OF ONEENERGY RENEWABLES AND SHALL NOT BE COPIED, DISCLOSED OR REPRODUCED WITHOUT CONSENT.

SCALE: 1" = 400'





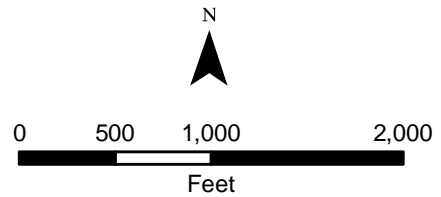
# Goose Prairie Solar Project

## Figure A-3 Tax Lots

Yakima County, Washington

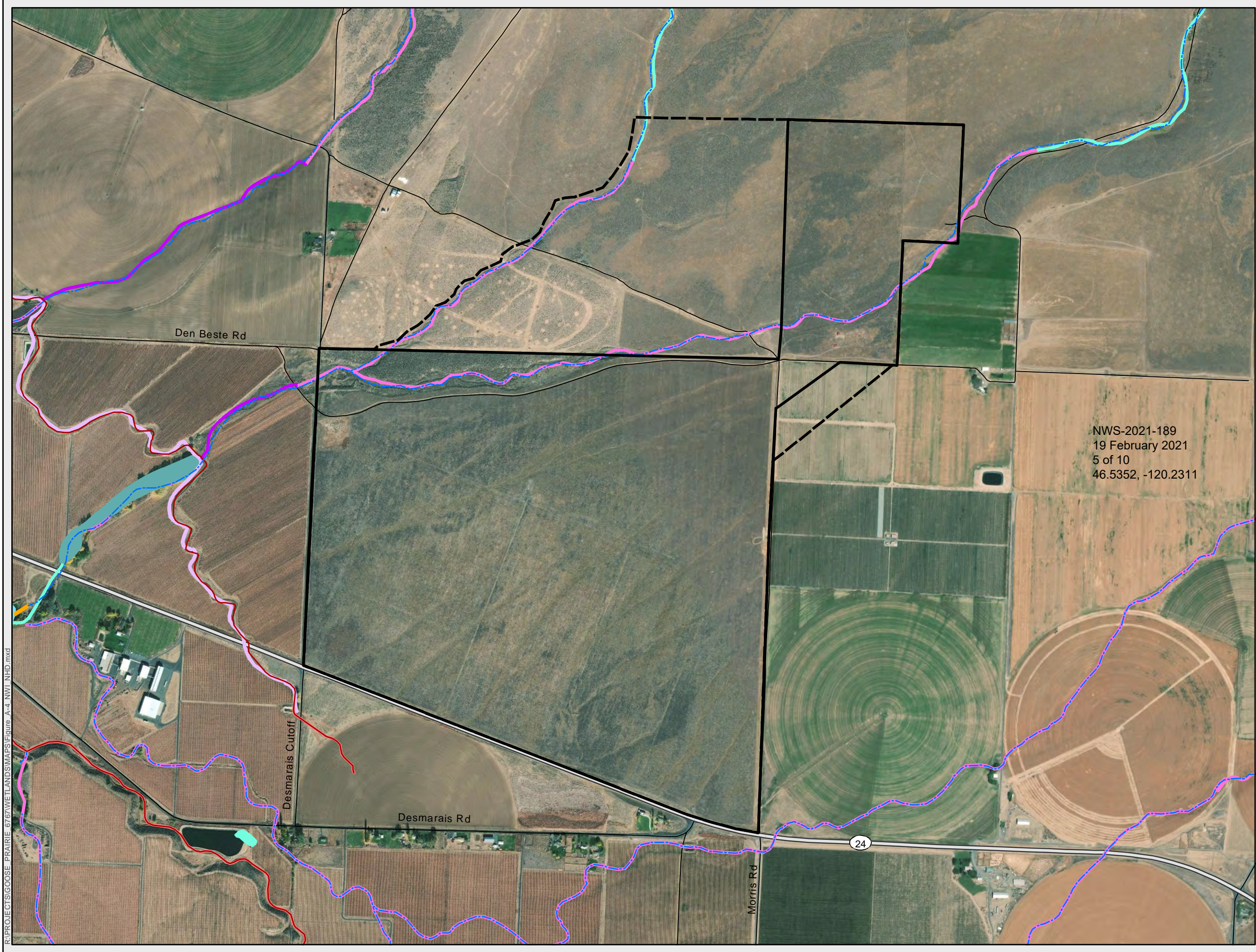
- Project Study Area
- Expanded Project Study Area
- Tax Lots
- Highway
- Local Road

NWS-2021-189  
19 February 2021  
4 of 10  
46.5352, -120.2311



R:\PROJECTS\GOOSE PRAIRIE\_6767\WELAND\MAPS\Figure A-3\_Tax Lots.mxd



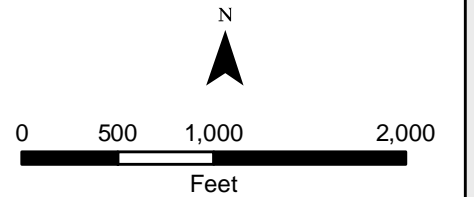


**Goose Prairie Solar Project**

**Figure A-4  
NWI Wetlands and  
NHD Flowlines**

Yakima County, Washington

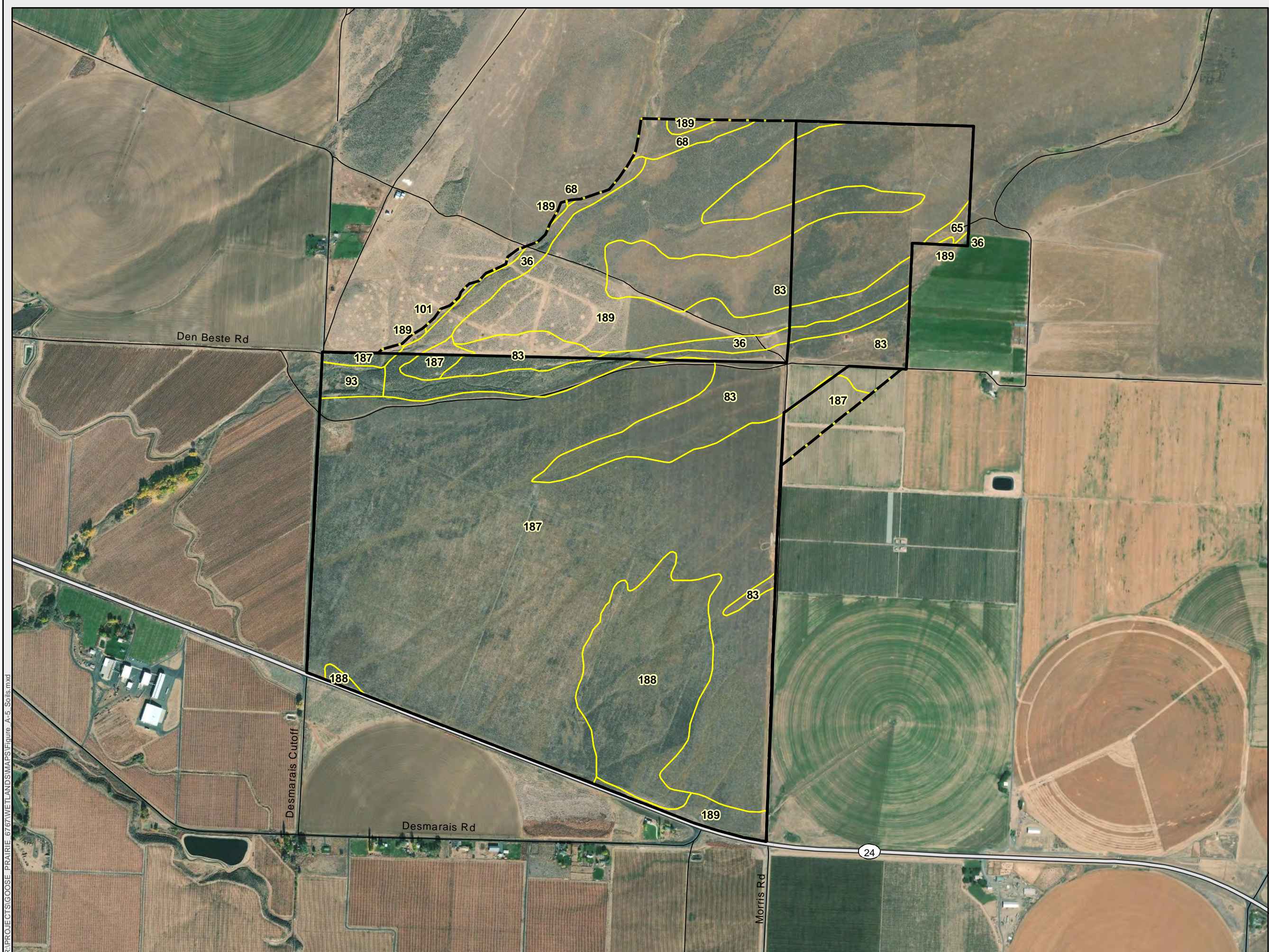
- Project Study Area
- Expanded Project Study Area
- Highway
- Local Road
- NHD Flowline**
  - Canal/Ditch
  - Intermittent Stream
- NWI Wetland Type**
  - Freshwater Emergent Wetland (PEM1/FO1A)
  - Freshwater Emergent Wetland (PEM1A)
  - Freshwater Pond (PUBFh)
  - Riverine (R2UBHx)
  - Riverine (R4SBA)
  - Riverine (R4SBC)
  - Riverine (R5UBFx)
  - Riverine (R5UBH)



R:\PROJECTS\GOOSE PRAIRIE 6767\WETLANDS\MAPS\Figure A-4 NWI NHD.mxd



R:\PROJECTS\GOOSE PRAIRIE 6767\WETLANDS\MAPS\Figure A-5 Soils.mxd



# Goose Prairie Solar Project

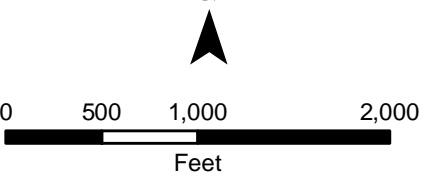
## Figure A-5 NRCS Soils

Yakima County, Washington

- Project Study Area
- Expanded Project Study Area
- Highway
- Local Road
- Soil Unit: Soil Name

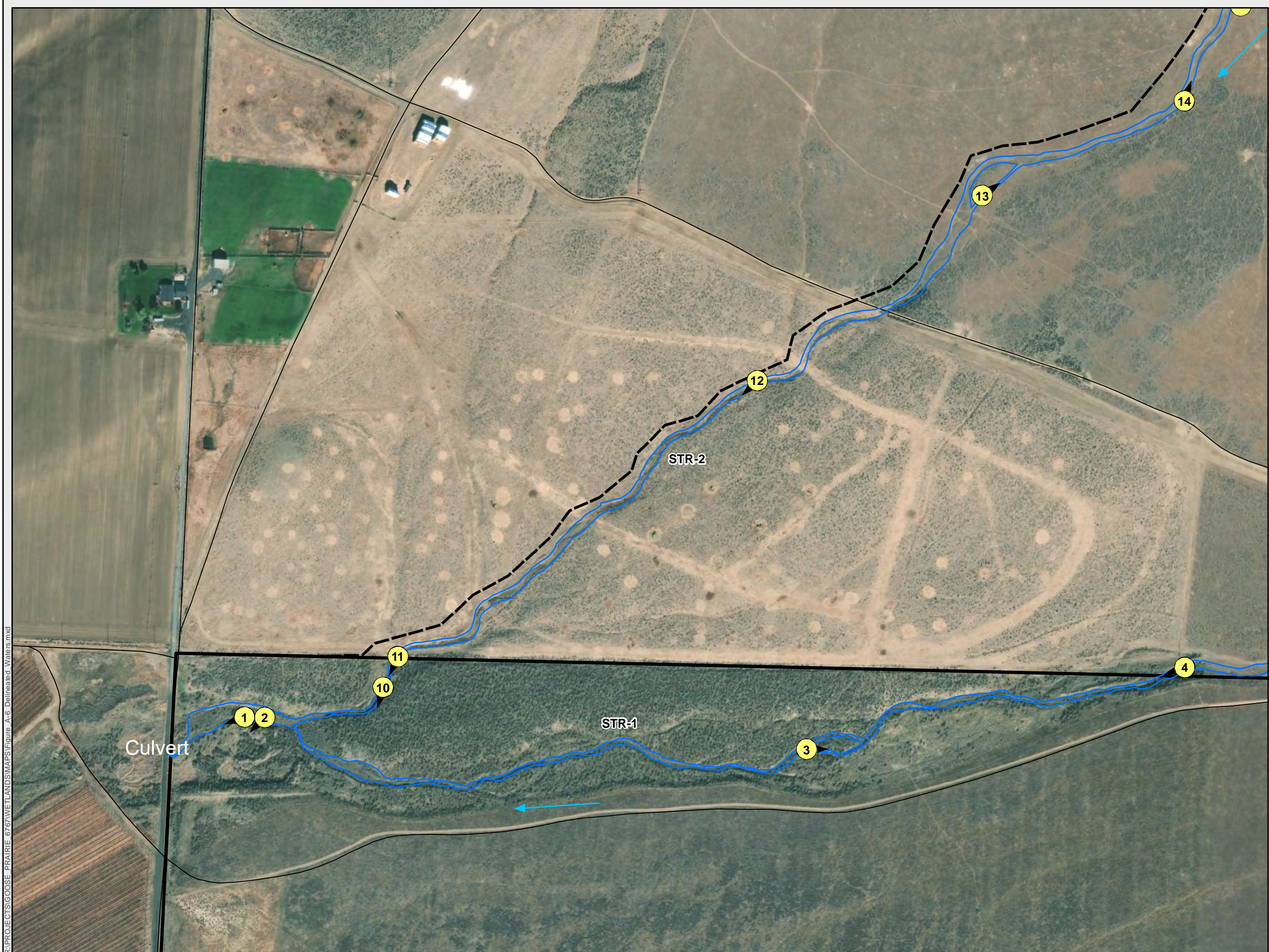
- 36: Finley cobbly fine sandy loam, 0-5% slopes
- 65: Kiona stony silt loam, 15-45% slopes
- 68: Licksillet very stony silt loam, 5-45% slopes
- 83: Moxee silt loam, 2-15% slopes
- 93: Pits
- 101: Ritzville silt loam, 8-15% slopes
- 187: Willis silt loam, 2-5% slopes
- 188: Willis silt loam, 5-8% slopes
- 189: Willis silt loam, 8-15% slopes

NWS-2021-189  
19 February 2021  
6 of 10  
46.5352, -120.2311





R:\PROJECTS\GOOSE PRAIRIE\_6767\WETLANDS\MAPS\Figure\_A-6 Delineated Waters.mxd



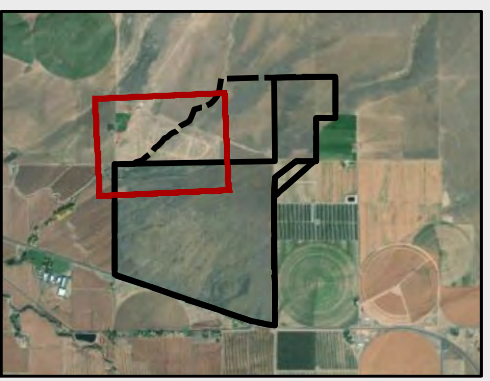
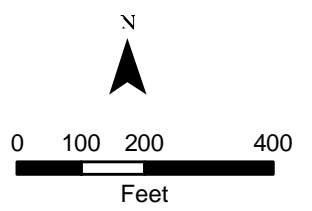
**Goose Prairie Solar Project**

**Figure A-6a  
Delineated Non-wetland  
Waters**

Yakima County, Washington

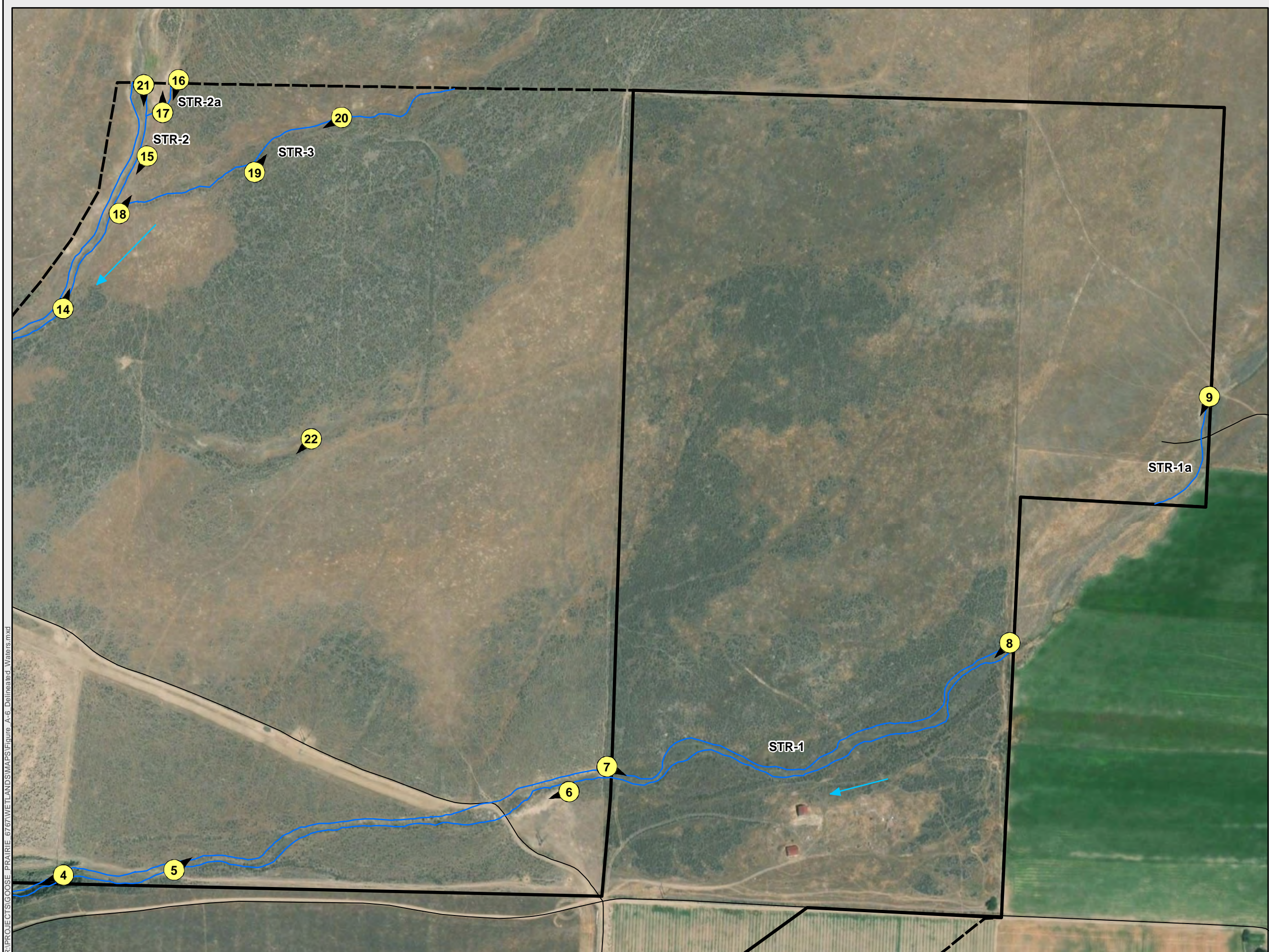
- Project Study Area
- Expanded Project Study Area
- Delineated Stream
- Flow Direction
- Photo Location and Direction
- Highway
- Local Road

NWS-2021-189  
19 February 2021  
7 of 10  
46.5352, -120.2311





R:\PROJECTS\GOOSE PRAIRIE\_6767\WETLANDS\MAPS\Figure\_A-6\_Delineated\_Waters.mxd



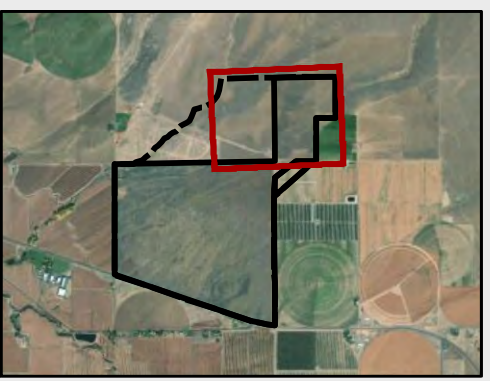
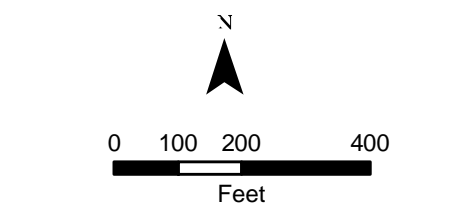
**Goose Prairie Solar Project**

**Figure A-6b  
Delineated Non-wetland  
Waters**

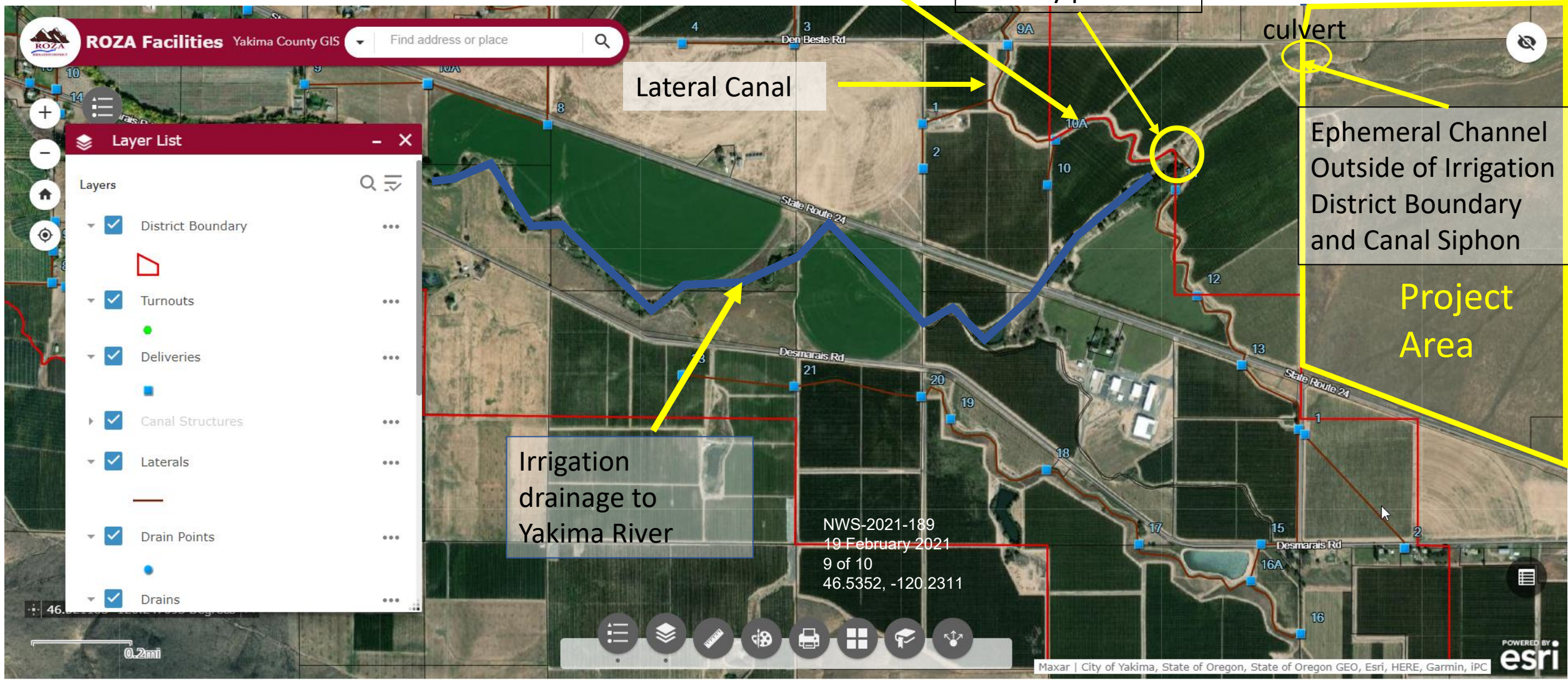
Yakima County, Washington

- Project Study Area
- Expanded Project Study Area
- Delineated Stream
- Flow Direction
- Photo Location and Direction
- Highway
- Local Road

NWS-2021-189  
19 February 2021  
8 of 10  
46.5352, -120.2311









NWS-2021-189

NHD Trace Map

Legend

- Elephant Mountain
- Feature 1
- KUTI
- Untitled Placemark

