

APPENDIX Q: VISUAL SIMULATIONS (REVISED)

R:\PROJECTS\HORSE HEAVEN 6430\VIEWSHED\MAPS\VISUAL SIMULATION PHOTOS 20230918.mxd

Existing Conditions



Project Simulation Option 1

231 WTG



Project Simulation Option 2

147 WTG



Horse Heaven
Wind Project



Figure 1
Representative Viewpoint 1
Existing Conditions
and Project Simulations

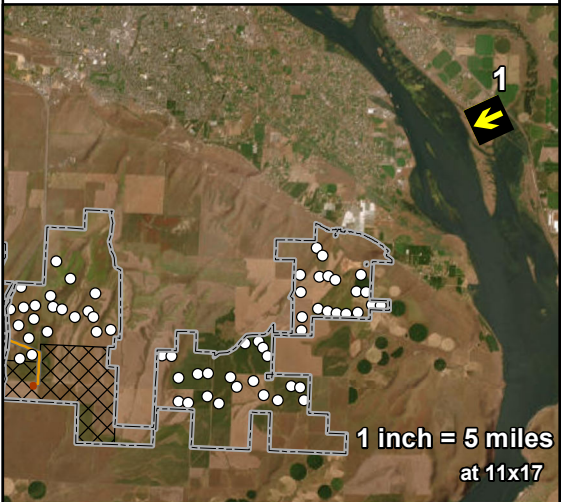
BENTON COUNTY, WA

- Viewpoint Location and Photo Direction
- Project Lease Boundary
 - Proposed Turbine Location
- Proposed Substation/BESS
- Proposed Transmission Line
- Solar Siting Area

View direction (deg):	244
Horizontal field of view (deg):.....	75
Vertical field of view (deg):.....	20
Max. WTGs within field of view:...	231 / 147
Max. Visible WTGs at tip height:..	186 / 134
Max. Visible WTGs at hub height:	140 / 104
Closest WTG (mi):.....	5.2 / 5.8
Furthest WTG (mi):.....	26.8 / 26.5
Closest Solar Array (mi):.....	No view
Closest Transmission Line (mi):.....	No view
Closest Substation / BESS (mi):...	No view

To approximate how the project will appear to a viewer in the natural setting, this sheet should be printed at 11 x 17 inches, full size with no scaling, and viewed at 6 inches from the eye. If viewed on a computer monitor, the document should be scaled at 100% and viewed at 6 inches from the eye.

NOT FOR CONSTRUCTION



Existing Conditions



Project Simulation Option 1

231 WTG



Project Simulation Option 2

147 WTG



Horse Heaven
Wind Project



Figure 2
Representative Viewpoint 2a
Existing Conditions
and Project Simulations

BENTON COUNTY, WA



Viewpoint Location and
Photo Direction



Project Lease Boundary



Proposed Turbine Location



Proposed Substation/BESS



Proposed Transmission Line

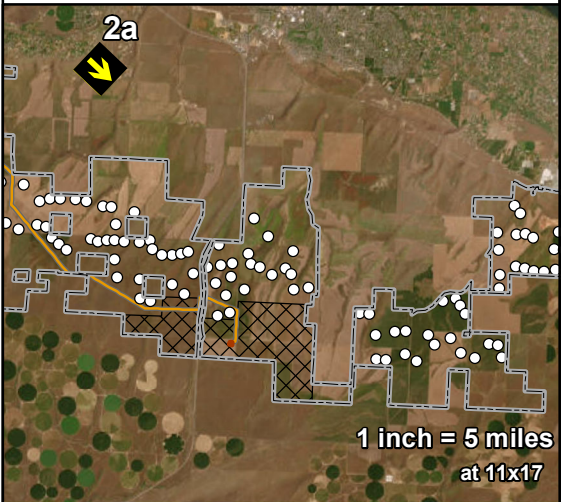


Solar Siting Area

View direction (deg):	132
Horizontal field of view (deg):.....	57
Vertical field of view (deg):.....	15
Max. WTGs within field of view:...	68 / 38
Max. Visible WTGs at tip height:..	49 / 29
Max. Visible WTGs at hub height:	43 / 24
Closest WTG (mi):.....	5.1 / 4.8
Furthest WTG (mi):.....	13.4 / 13
Closest Solar Array (mi):.....	No view
Closest Transmission Line (mi):.....	No view
Closest Substation / BESS (mi):...	No view

To approximate how the project will appear to a viewer in the natural setting, this sheet should be printed at 11 x 17 inches, full size with no scaling, and viewed at 8 inches from the eye. If viewed on a computer monitor, the document should be scaled at 100% and viewed at 8 inches from the eye.

NOT FOR CONSTRUCTION



Existing Conditions



Project Simulation Option 1

231 WTG



Project Simulation Option 2

147 WTG



Horse Heaven
Wind Project



Figure 3
Representative Viewpoint 2b
Existing Conditions
and Project Simulations

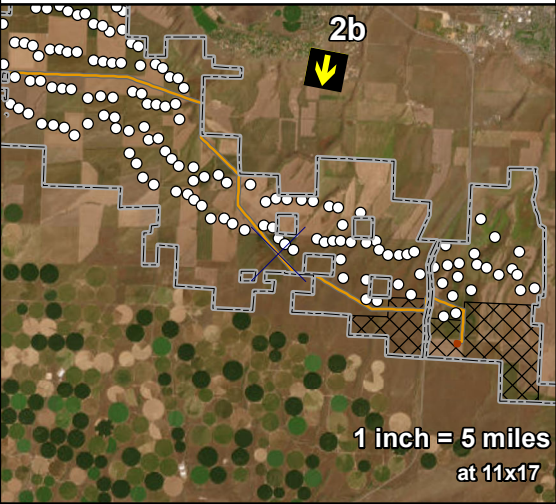
BENTON COUNTY, WA

- Viewpoint Location and Photo Direction
- Project Lease Boundary
- Proposed Turbine Location
- Proposed Substation/BESS
- Proposed Transmission Line
- Solar Siting Area

View direction (deg):	189
Horizontal field of view (deg):.....	57
Vertical field of view (deg):.....	15
Max. WTGs within field of view:...	32 / 18
Max. Visible WTGs at tip height:..	31 / 18
Max. Visible WTGs at hub height:	25 / 16
Closest WTG (mi):.....	3.5 / 3.5
Furthest WTG (mi):.....	6.2 / 5.9
Closest Solar Array (mi):.....	No view
Closest Transmission Line (mi):.....	No view
Closest Substation / BESS (mi):...	No view

To approximate how the project will appear to a viewer in the natural setting, this sheet should be printed at 11 x 17 inches, full size with no scaling, and viewed at 8 inches from the eye. If viewed on a computer monitor, the document should be scaled at 100% and viewed at 8 inches from the eye.

NOT FOR CONSTRUCTION



Existing Conditions



Project Simulation Option 1

231 WTG



Project Simulation Option 2

147 WTG



Horse Heaven
Wind Project



Figure 4
Representative Viewpoint 2c
Existing Conditions
and Project Simulations

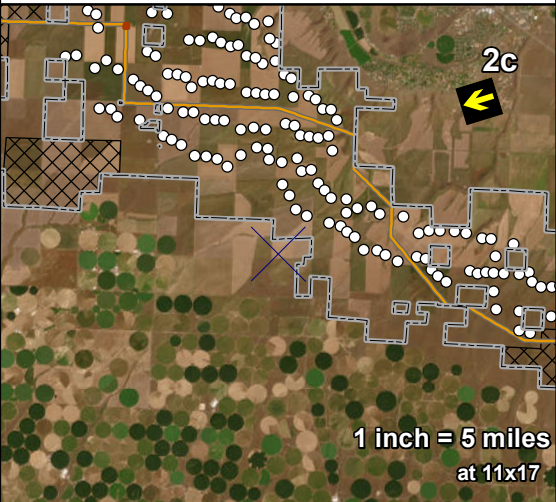
BENTON COUNTY, WA

- Viewpoint Location and Photo Direction
- Project Lease Boundary
 - Proposed Turbine Location
- Proposed Substation/BESS
- Proposed Transmission Line
- Solar Siting Area

View direction (deg):	251
Horizontal field of view (deg):.....	56
Vertical field of view (deg):.....	15
Max. WTGs within field of view:...	85 / 60
Max. Visible WTGs at tip height:..	46 / 39
Max. Visible WTGs at hub height:	24 / 21
Closest WTG (mi):.....	3.7 / 3.7
Furthest WTG (mi):.....	10.8 / 10.8
Closest Solar Array (mi):.....	No view
Closest Transmission Line (mi):.....	3.4
Closest Substation / BESS (mi):...	No view

To approximate how the project will appear to a viewer in the natural setting, this sheet should be printed at 11 x 17 inches, full size with no scaling, and viewed at 8 inches from the eye. If viewed on a computer monitor, the document should be scaled at 100% and viewed at 8 inches from the eye.

NOT FOR CONSTRUCTION



R:\PROJECTS\HORSE HEAVEN_6430\VIEWSHED\MAPS\VISUAL SIMULATION PHOTOS_20230522\VISUAL SIMULATION PHOTOS_20230522.aprx

As Taken (April 2022)



Horse Heaven
Wind Project



Figure 5-1a
Representative Viewpoint 3
Existing Conditions -
Revised*
BENTON COUNTY, WA

- Viewpoint Location and Photo Direction
- Project Lease Boundary
 - Proposed Turbine Location
- Proposed Substation/BESS
- Proposed Transmission Line
- Solar Siting Area

View direction (deg): 128
Horizontal field of view (deg):..... 56
Vertical field of view (deg):..... 15

Sky Replacement and De-hazing



*Original photos and simulations submitted in 2021
To approximate how the project will appear to a viewer in the natural setting, this sheet should be printed at 11 x 17 inches, full size with no scaling, and viewed at 8 inches from the eye. If viewed on a computer monitor, the document should be scaled at 100% and viewed at 8 inches from the eye.

NOT FOR CONSTRUCTION



R:\PROJECTS\HORSE HEAVEN_6430\VIEWSHED\MAPS\VISUAL_SIMULATION_PHOTOS_2022\016\VISUAL_SIMULATION_PHOTOS_2023\052\2VISUAL_SIMULATION_PHOTOS_2023\052_20230522.aprx

Existing Conditions



Project Simulation Option 1
231 WTG



Project Simulation Option 2
147 WTG



Horse Heaven
Wind Project



Figure 5-1b
Representative Viewpoint 3
Existing Conditions
and Project Simulations - Revised*
BENTON COUNTY, WA



Viewpoint Location and
Photo Direction



Project Lease Boundary



Proposed Turbine Location



Proposed Substation/BESS



Proposed Transmission Line



Solar Siting Area

View direction (deg):	128
Horizontal field of view (deg):.....	56
Vertical field of view (deg):.....	15
Max. WTGs within field of view:...	231 / 147
Max. Visible WTGs at tip height:..	226 / 147
Max. Visible WTGs at hub height:	210 / 139
Closest WTG (mi):.....	2.5 / 2.8
Furthest WTG (mi):.....	28.1 / 27.6
Closest Solar Array (mi):.....	2.1
Closest Transmission Line (mi):.....	4.2
Closest Substation / BESS (mi):...	No View

*Original photos and simulations submitted in 2021

To approximate how the project will appear to a viewer in the natural setting, this sheet should be printed at 11 x 17 inches, full size with no scaling, and viewed at 8 inches from the eye. If viewed on a computer monitor, the document should be scaled at 100% and viewed at 8 inches from the eye.

NOT FOR CONSTRUCTION



R:\PROJECTS\HORSE HEAVEN_6430\VIEWSHED\MAPS\VISUAL SIMULATION PHOTOS_2022\10\18\VISUAL SIMULATION PHOTOS_2023\05\22\VISUAL SIMULATION PHOTOS_2023\05\22_407X

Existing Conditions

Project Simulation Option 1
231 WTG

Project Simulation Option 2
147 WTG



Horse Heaven
Wind Project



Figure 6
Representative Viewpoint 4a
Existing Conditions
and Project Simulations

BENTON COUNTY, WA



Viewpoint Location and
Photo Direction



Project Lease Boundary



Proposed Turbine Location



Proposed Substation/BESS



Proposed Transmission Line

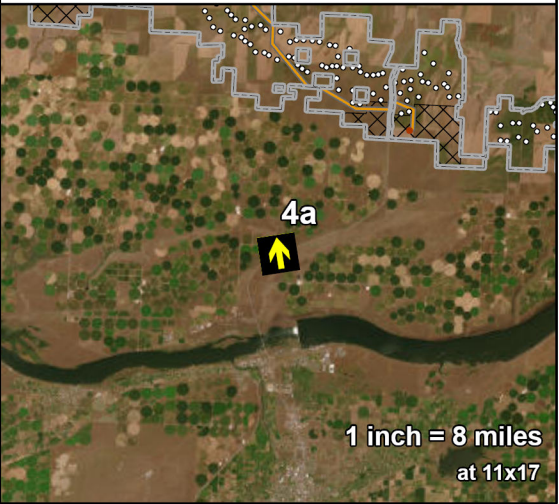


Solar Siting Area

View direction (deg):	350
Horizontal field of view (deg):.....	57
Vertical field of view (deg):.....	15
Max. WTGs within field of view:...	154 / 107
Max. Visible WTGs at tip height:..	51 / 40
Max. Visible WTGs at hub height:	34 / 26
Closest WTG (mi):.....	7.3 / 7.3
Furthest WTG (mi):.....	19.6 / 19.4
Closest Solar Array (mi):.....	No view
Closest Transmission Line (mi):.....	6.5
Closest Substation / BESS (mi):...	No view

To approximate how the project will appear to a viewer in the natural setting, this sheet should be printed at 11 x 17 inches, full size with no scaling, and viewed at 8 inches from the eye. If viewed on a computer monitor, the document should be scaled at 100% and viewed at 8 inches from the eye.

NOT FOR CONSTRUCTION



R:\PROJECTS\HORSE HEAVEN 6430\VIEWSHED\MAPS\VISUAL SIMULATION PHOTOS 2022\10\18\VISUAL SIMULATION PHOTOS 2023\05\02\4b\4b

Existing Conditions



Project Simulation Option 1
231 WTG



Project Simulation Option 2
147 WTG



Horse Heaven
Wind Project



Figure 7
Representative Viewpoint 4b
Existing Conditions
and Project Simulations

BENTON COUNTY, WA



Viewpoint Location and
Photo Direction



Project Lease Boundary



Proposed Turbine Location



Proposed Substation/BESS



Proposed Transmission Line

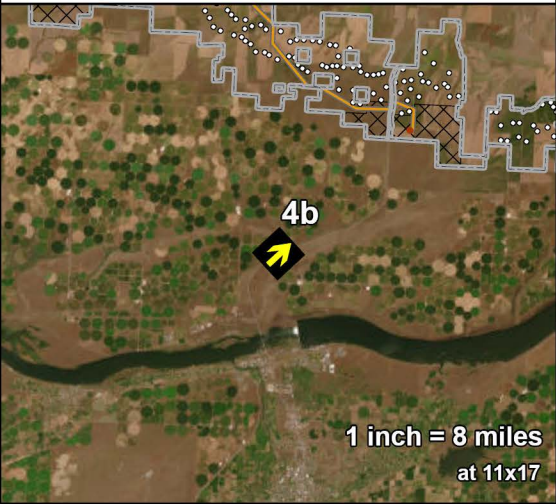


Solar Siting Area

View direction (deg):	46
Horizontal field of view (deg):.....	57
Vertical field of view (deg):.....	15
Max. WTGs within field of view:...	77 / 42
Max. Visible WTGs at tip height:..	59 / 37
Max. Visible WTGs at hub height:	55 / 33
Closest WTG (mi):.....	7.3 / 7.3
Furthest WTG (mi):.....	16.2 / 15.6
Closest Solar Array (mi):.....	7.3
Closest Transmission Line (mi):.....	7.6
Closest Substation / BESS (mi):...	7.3

To approximate how the project will appear to a viewer in the natural setting, this sheet should be printed at 11 x 17 inches, full size with no scaling, and viewed at 8 inches from the eye. If viewed on a computer monitor, the document should be scaled at 100% and viewed at 8 inches from the eye.

NOT FOR CONSTRUCTION



R:\PROJECTS\HORSE HEAVEN_6430\VIEWSHED\MAPS\VISUAL SIMULATION PHOTOS_20230522\VISUAL SIMULATION PHOTOS_20230522.aprx

As Taken (April 2022)



Sky Replacement and De-hazing



Horse Heaven
Wind Project



Figure 8-1a
Representative Viewpoint 5
Existing Conditions -
Revised*

BENTON COUNTY, WA



Viewpoint Location and Photo
Direction



Project Lease Boundary



Proposed Turbine Location

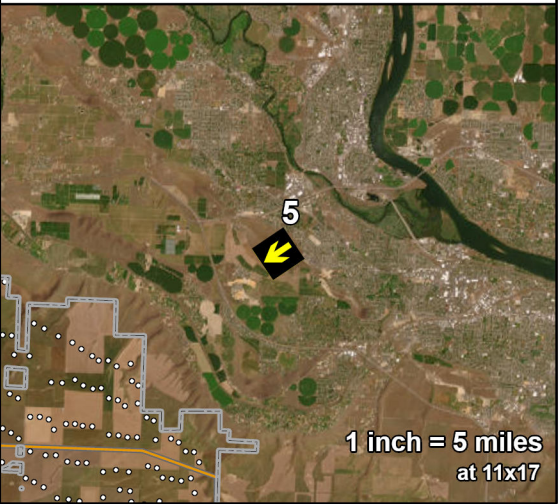


Proposed Transmission Line

View direction (deg): 236
Horizontal field of view (deg):..... 58
Vertical field of view (deg):..... 15

*Original photos and simulations submitted in 2021
To approximate how the project will appear to a viewer in the natural setting, this sheet should be printed at 11 x 17 inches, full size with no scaling, and viewed at 8 inches from the eye. If viewed on a computer monitor, the document should be scaled at 100% and viewed at 8 inches from the eye.

NOT FOR CONSTRUCTION



R:\PROJECTS\HORSE HEAVEN_6430\VIEWSHED\MAPS\VISUAL SIMULATION PHOTOS_2022\10\16\VISUAL SIMULATION PHOTOS_20230522\VISUAL SIMULATION PHOTOS_20230522.aprx

Existing Conditions



Project Simulation Option 1

231 WTG



Project Simulation Option 2

147 WTG



Horse Heaven
Wind Project



Figure 8-1b
Representative Viewpoint 5
Existing Conditions
and Project Simulations - Revised*

BENTON COUNTY, WA



Viewpoint Location and
Photo Direction



Project Lease Boundary



Proposed Turbine Location



Proposed Substation/BESS



Proposed Transmission Line



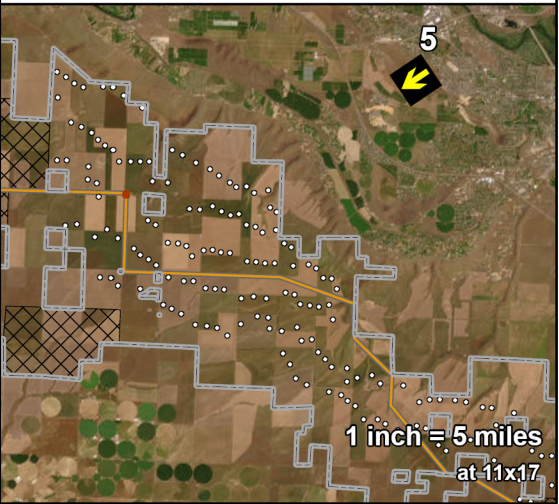
Solar Siting Area

View direction (deg):	236
Horizontal field of view (deg):.....	58
Vertical field of view (deg):.....	15
Max. WTGs within field of view:...	94 / 72
Max. Visible WTGs at tip height:..	94 / 72
Max. Visible WTGs at hub height:	94 / 72
Closest WTG (mi):.....	4.8 / 4.8
Furthest WTG (mi):.....	9.9 / 9.8
Closest Solar Array (mi):.....	No view
Closest Transmission Line (mi):.....	No view
Closest Substation / BESS (mi):...	No view

*Original photos and simulations submitted in 2021

To approximate how the project will appear to a viewer in the natural setting, this sheet should be printed at 11 x 17 inches, full size with no scaling, and viewed at 8 inches from the eye. If viewed on a computer monitor, the document should be scaled at 100% and viewed at 8 inches from the eye.

NOT FOR CONSTRUCTION



R:\PROJECTS\HORSE HEAVEN_6430\VIEWSHED\MAPS\VISUAL SIMULATION PHOTOS 20230522\VISUAL SIMULATION PHOTOS 20230522.aprx

As Taken (April 2022)



Sky Replacement and De-hazing



Horse Heaven
Wind Project



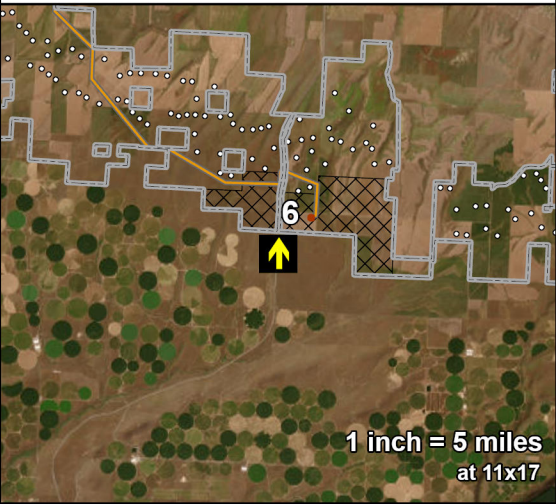
Figure 9-1a
Representative Viewpoint 6
Existing Conditions -
Revised*
BENTON COUNTY, WA

- Viewpoint Location and Photo Direction
- Project Lease Boundary
 - Proposed Turbine Location
- Proposed Substation/BESS
- Proposed Transmission Line
- Solar Siting Area

View direction (deg): 360
Horizontal field of view (deg):..... 60
Vertical field of view (deg):..... 15

*Original photos and simulations submitted in 2021
To approximate how the project will appear to a viewer in the natural setting, this sheet should be printed at 11 x 17 inches, full size with no scaling, and viewed at 8 inches from the eye. If viewed on a computer monitor, the document should be scaled at 100% and viewed at 8 inches from the eye.

NOT FOR CONSTRUCTION TETRA TECH



R:\PROJECTS\HORSE HEAVEN 6430\VIEWSHED\MAPS\VISUAL SIMULATION PHOTOS 2022\04\18\VISUAL SIMULATION PHOTOS 2023\05\22\VISUAL SIMULATION PHOTOS 2023\05\22 44x

Existing Conditions



Project Simulation Option 1
231 WTG



Project Simulation Option 2
147 WTG



Horse Heaven
Wind Project



Figure 9-1b
Representative Viewpoint 6
Existing Conditions
and Project Simulations - Revised*
BENTON COUNTY, WA



Viewpoint Location and
Photo Direction



Project Lease Boundary



Proposed Turbine Location



Proposed Substation/BESS



Proposed Transmission Line



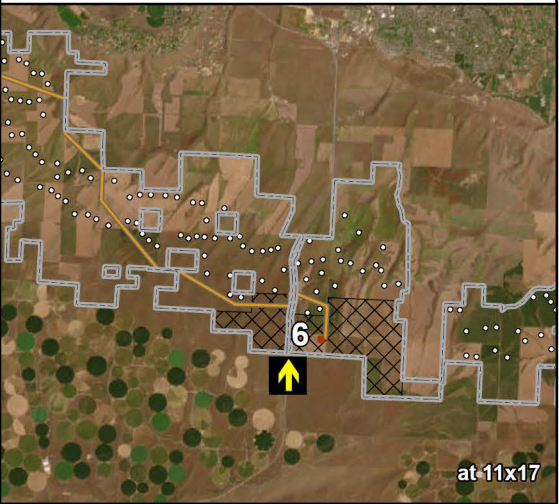
Solar Siting Area

View direction (deg):	360
Horizontal field of view (deg):.....	60
Vertical field of view (deg):.....	15
Max. WTGs within field of view:...	29 / 16
Max. Visible WTGs at tip height:..	29 / 16
Max. Visible WTGs at hub height:	26 / 16
Closest WTG (mi):.....	1.7 / 1.8
Furthest WTG (mi):.....	5 / 5
Closest Solar Array (mi):.....	No view
Closest Transmission Line (mi):.....	1.8
Closest Substation / BESS (mi):...	No view

*Original photos and simulations submitted in 2021

To approximate how the project will appear to a viewer in the natural setting, this sheet should be printed at 11 x 17 inches, full size with no scaling, and viewed at 8 inches from the eye. If viewed on a computer monitor, the document should be scaled at 100% and viewed at 8 inches from the eye.

NOT FOR CONSTRUCTION



R:\PROJECTS\HORSE HEAVEN_6430\VIEWSHED\MAPS\VISUAL SIMULATION PHOTOS_20230522\VISUAL SIMULATION PHOTOS_20230522.aprx

As Taken (April 2022)



Sky Replacement and De-hazing



Horse Heaven
Wind Project



Figure 10-1a
Representative Viewpoint 7
Existing Conditions -
Revised*
BENTON COUNTY, WA

- Viewpoint Location and Photo Direction
- Project Lease Boundary
 - Proposed Turbine Location
- Proposed Substation/BESS
- Proposed Transmission Line
- Solar Siting Area

View direction (deg): 60
Horizontal field of view (deg):..... 58
Vertical field of view (deg):..... 15

*Original photos and simulations submitted in 2021
To approximate how the project will appear to a viewer in the natural setting, this sheet should be printed at 11 x 17 inches, full size with no scaling, and viewed at 8 inches from the eye. If viewed on a computer monitor, the document should be scaled at 100% and viewed at 8 inches from the eye.

NOT FOR CONSTRUCTION TETRA TECH



R:\PROJECTS\HORSE HEAVEN_6430\VIEWSHEDMAPS\VISUAL SIMULATION PHOTOS_2022\016\VISUAL SIMULATION PHOTOS_20230522\VISUAL SIMULATION PHOTOS_20230522.aprx

Existing Conditions

Project Simulation Option 1
231 WTG

Project Simulation Option 2
147 WTG



Horse Heaven
Wind Project



Figure 10b
Representative Viewpoint 7
Existing Conditions
and Project Simulations - Revised*

BENTON COUNTY, WA



Viewpoint Location and
Photo Direction



Project Lease Boundary



Proposed Turbine Location



Proposed Substation/BESS



Proposed Transmission Line



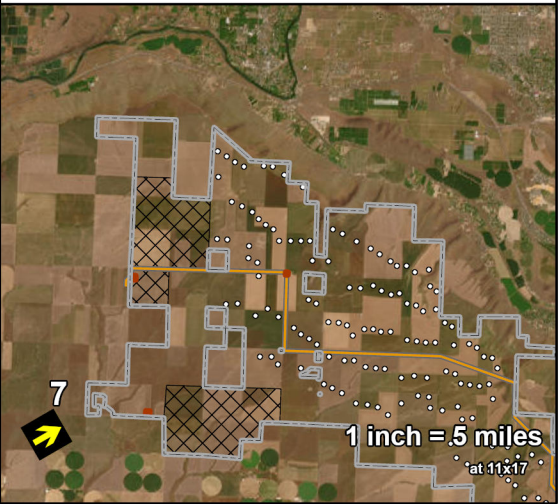
Solar Siting Area

View direction (deg):	60
Horizontal field of view (deg):.....	58
Vertical field of view (deg):.....	15
Max. WTGs within field of view:...	117 / 86
Max. Visible WTGs at tip height:..	117 / 86
Max. Visible WTGs at hub height:	109 / 84
Closest WTG (mi):.....	5.8 / 5.8
Furthest WTG (mi):.....	11.9 / 11.8
Closest Solar Array (mi):.....	3.1
Closest Transmission Line (mi):.....	2.2
Closest Substation / BESS (mi):..	No view

*Original photos and simulations submitted in 2021

To approximate how the project will appear to a viewer in the natural setting, this sheet should be printed at 11 x 17 inches, full size with no scaling, and viewed at 8 inches from the eye. If viewed on a computer monitor, the document should be scaled at 100% and viewed at 8 inches from the eye.

NOT FOR CONSTRUCTION



R:\PROJECTS\HORSE HEAVEN_6430\VIEWSHED\MAPS\VISUAL SIMULATION PHOTOS_2022\10\18\VISUAL SIMULATION PHOTOS_2023\05\22\VISUAL SIMULATION PHOTOS_2023\05\22_407X

Existing Conditions

Project Simulation Option 1
231 WTG

Project Simulation Option 2
147 WTG



Horse Heaven
Wind Project



Figure 11
Representative Viewpoint 8a
Existing Conditions
and Project Simulations

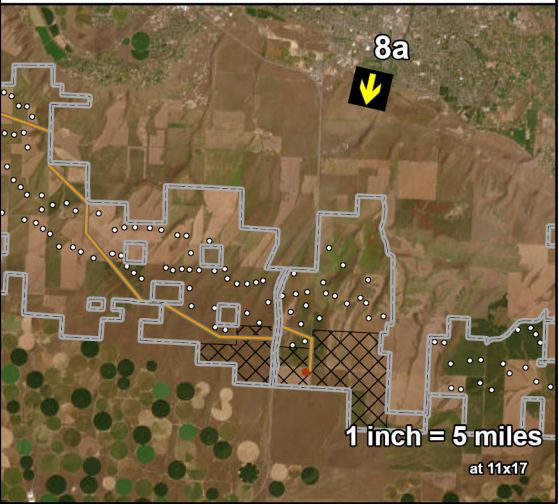
BENTON COUNTY, WA

- Viewpoint Location and Photo Direction
- Project Lease Boundary
 - Proposed Turbine Location
- Proposed Substation/BESS
- Proposed Transmission Line
- Solar Siting Area

View direction (deg):	193
Horizontal field of view (deg):.....	57
Vertical field of view (deg):.....	15
Max. WTGs within field of view:...	37 / 19
Max. Visible WTGs at tip height:..	34 / 18
Max. Visible WTGs at hub height:	31 / 15
Closest WTG (mi):.....	4.3 / 5.4
Furthest WTG (mi):.....	7.4 / 7.3
Closest Solar Array (mi):.....	No view
Closest Transmission Line (mi):.....	No view
Closest Substation / BESS (mi):...	No view

To approximate how the project will appear to a viewer in the natural setting, this sheet should be printed at 11 x 17 inches, full size with no scaling, and viewed at 8 inches from the eye. If viewed on a computer monitor, the document should be scaled at 100% and viewed at 8 inches from the eye.

NOT FOR CONSTRUCTION



R:\PROJECTS\HORSE HEAVEN_6430\VIEWSHED\MAPS\VISUAL_SIMULATION_PHOTOS_20221016\VISUAL_SIMULATION_PHOTOS_20230522\VISUAL_SIMULATION_PHOTOS_20230522.aprx

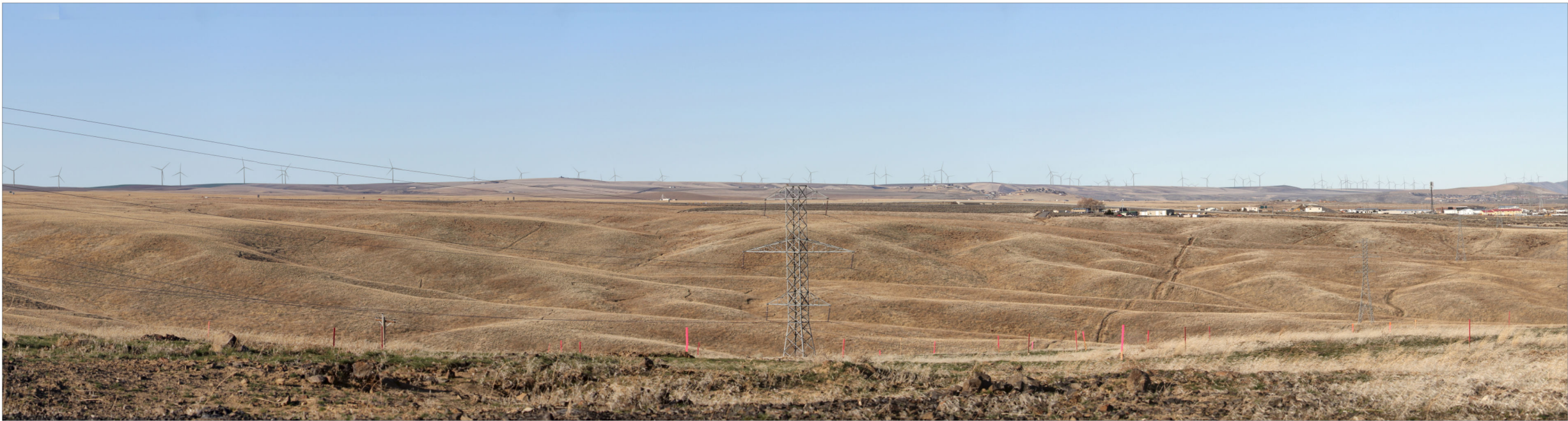
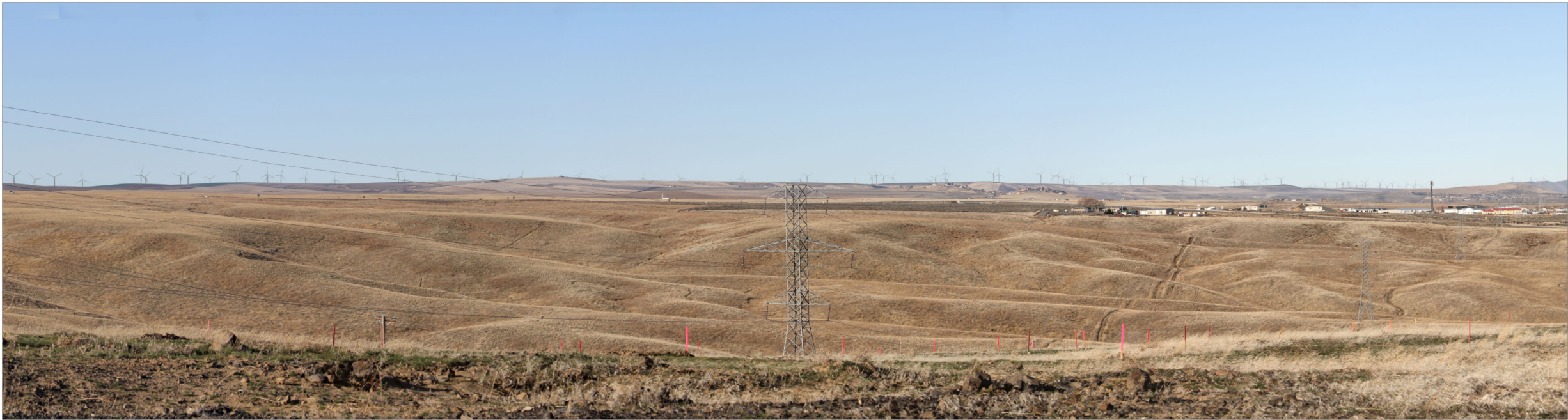
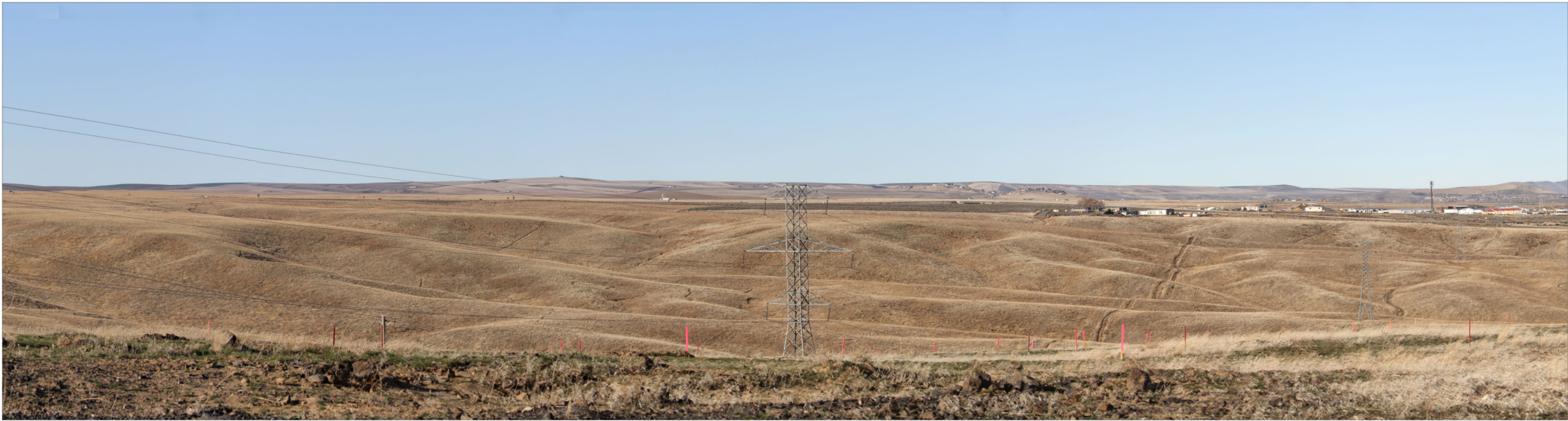
Existing Conditions

Project Simulation Option 1

231 WTG

Project Simulation Option 2

147 WTG



Horse Heaven
Wind Project



Figure 12
Representative Viewpoint 8b
Existing Conditions
and Project Simulations

BENTON COUNTY, WA



Viewpoint Location and
Photo Direction



Project Lease Boundary



Proposed Turbine Location



Proposed Transmission Line



Solar Siting Area

View direction (deg):	258
Horizontal field of view (deg):.....	57
Vertical field of view (deg):.....	15
Max. WTGs within field of view:...	147 / 101
Max. Visible WTGs at tip height:..	131 / 97
Max. Visible WTGs at hub height:	101 / 79
Closest WTG (mi):.....	6.1 / 6.1
Furthest WTG (mi):.....	16.8 / 16.6
Closest Solar Array (mi):.....	No view
Closest Transmission Line (mi):.....	No view
Closest Substation / BESS (mi):...	No view

To approximate how the project will appear to a viewer in the natural setting, this sheet should be printed at 11 x 17 inches, full size with no scaling, and viewed at 8 inches from the eye. If viewed on a computer monitor, the document should be scaled at 100% and viewed at 8 inches from the eye.

NOT FOR CONSTRUCTION



Existing Conditions



Project Simulation Option 1
231 WTG



Project Simulation Option 2
147 WTG



Horse Heaven
Wind Project



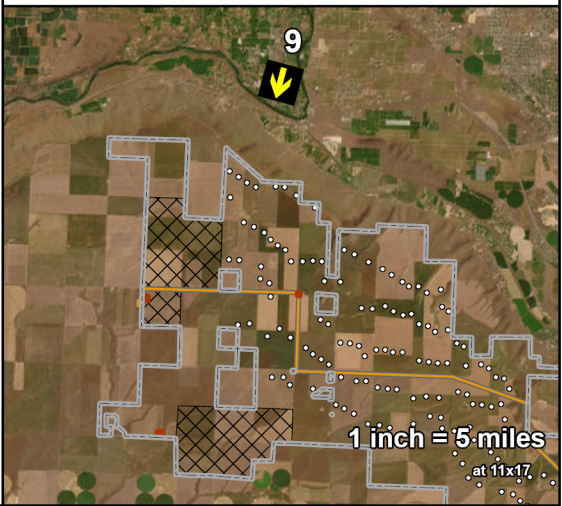
Figure 13
Representative Viewpoint 9
Existing Conditions
and Project Simulations
BENTON COUNTY, WA

- Viewpoint Location and Photo Direction
- Project Lease Boundary
 - Proposed Turbine Location
- Proposed Substation/BESS
- Proposed Transmission Line
- Solar Siting Area

View direction (deg):	195
Horizontal field of view (deg):.....	73
Vertical field of view (deg):.....	19
Max. WTGs within field of view:...	61 / 47
Max. Visible WTGs at tip height:..	5 / 5
Max. Visible WTGs at hub height:	4 / 4
Closest WTG (mi):.....	2.7 / 2.7
Furthest WTG (mi):.....	9.7 / 9.6
Closest Solar Array (mi):.....	No view
Closest Transmission Line (mi):.....	No view
Closest Substation / BESS (mi):...	No view

To approximate how the project will appear to a viewer in the natural setting, this sheet should be printed at 11 x 17 inches, full size with no scaling, and viewed at 6 inches from the eye. If viewed on a computer monitor, the document should be scaled at 100% and viewed at 6 inches from the eye.

NOT FOR CONSTRUCTION



R:\PROJECTS\HORSE HEAVEN_6430\VIEWSHED\MAPS\VISUAL SIMULATION PHOTOS_2022\10\18\VISUAL SIMULATION PHOTOS_2023\05\22\VISUAL SIMULATION PHOTOS_2023\05\22.aprx

Existing Conditions

Project Simulation Option 1
231 WTG

Project Simulation Option 2
147 WTG



Horse Heaven
Wind Project



Figure 14
Representative Viewpoint 10
Existing Conditions
and Project Simulations

BENTON COUNTY, WA



Viewpoint Location and
Photo Direction



Project Lease Boundary



Proposed Turbine Location



Proposed Substation/BESS



Proposed Transmission Line

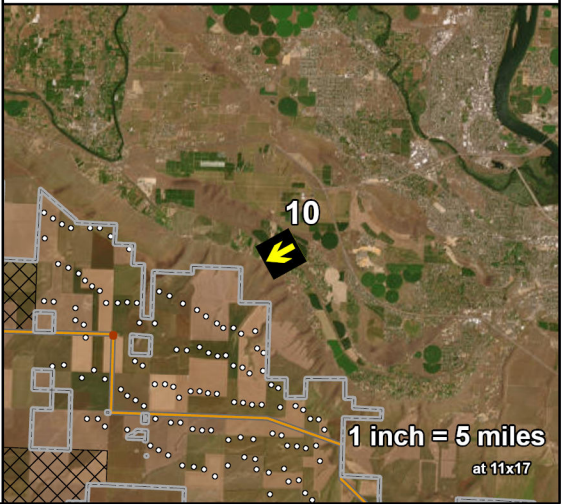


Solar Siting Area

View direction (deg):	241
Horizontal field of view (deg):.....	76
Vertical field of view (deg):.....	20
Max. WTGs within field of view:...	74 / 55
Max. Visible WTGs at tip height:..	11 / 12
Max. Visible WTGs at hub height:	5 / 6
Closest WTG (mi):.....	2.3 / 2.3
Furthest WTG (mi):.....	6.6 / 6.6
Closest Solar Array (mi):.....	No view
Closest Transmission Line (mi):.....	No view
Closest Substation / BESS (mi):...	No view

To approximate how the project will appear to a viewer in the natural setting, this sheet should be printed at 11 x 17 inches, full size with no scaling, and viewed at 6 inches from the eye. If viewed on a computer monitor, the document should be scaled at 100% and viewed at 6 inches from the eye.

NOT FOR CONSTRUCTION





BENTON COUNTY, WA

Viewpoint Location and Photo Direction

Project Lease Boundary

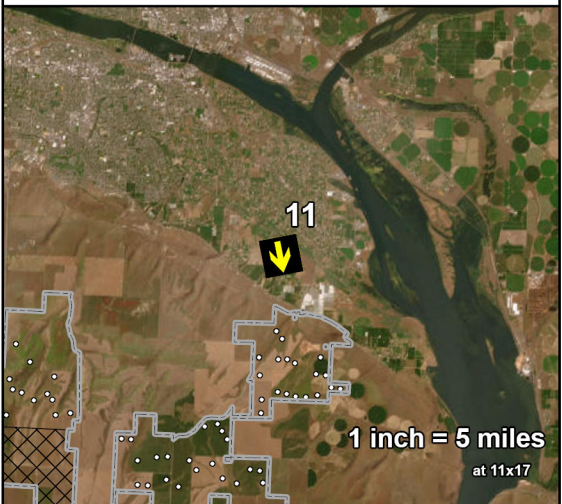
Proposed Turbine Location

Solar Siting Area

View direction (deg):	169
Horizontal field of view (deg):.....	73
Vertical field of view (deg):.....	19
Max. WTGs within field of view:...	33 / 47
Max. Visible WTGs at tip height:..	23 / 12
Max. Visible WTGs at hub height:	19 / 11
Closest WTG (mi):.....	2 / 2.5
Furthest WTG (mi):.....	6.6 / 6.6
Closest Solar Array (mi):.....	No view
Closest Transmission Line (mi):.....	No view
Closest Substation / BESS (mi):..	No view

To approximate how the project will appear to a viewer in the natural setting, this sheet should be printed at 11 x 17 inches, full size with no scaling, and viewed at 6 inches from the eye. If viewed on a computer monitor, the document should be scaled at 100% and viewed at 6 inches from the eye.

NOT FOR CONSTRUCTION



R:\PROJECTS\HORSE HEAVEN 6430\VIEWSHED\MAPS\VISUAL SIMULATION PHOTOS 2022\016\VISUAL SIMULATION PHOTOS 20230522\VISUAL SIMULATION PHOTOS 20230522.aprx

Existing Conditions



Project Simulation Option 1
231 WTG



Project Simulation Option 2
147 WTG



Horse Heaven
Wind Project



Figure 16
Representative Viewpoint 12
Existing Conditions
and Project Simulations

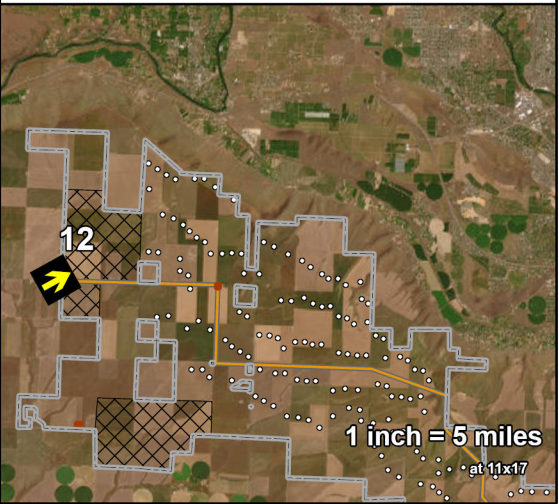
BENTON COUNTY, WA

- Viewpoint Location and Photo Direction
- Project Lease Boundary
 - Proposed Turbine Location
- Proposed Substation/BESS
- Proposed Transmission Line
- Solar Siting Area

View direction (deg):	61
Horizontal field of view (deg):.....	73
Vertical field of view (deg):.....	19
Max. WTGs within field of view:...	52 / 37
Max. Visible WTGs at tip height:..	52 / 37
Max. Visible WTGs at hub height:	51 / 37
Closest WTG (mi):.....	2.5 / 2.5
Furthest WTG (mi):.....	8.7 / 8.6
Closest Solar Array (mi):.....	0.2
Closest Transmission Line (mi):.....	No view
Closest Substation / BESS (mi):...	No view

To approximate how the project will appear to a viewer in the natural setting, this sheet should be printed at 11 x 17 inches, full size with no scaling, and viewed at 6 inches from the eye. If viewed on a computer monitor, the document should be scaled at 100% and viewed at 6 inches from the eye.

NOT FOR CONSTRUCTION



R:\PROJECTS\HORSE HEAVEN_6430\VIEWSHED\MAPS\VISUAL SIMULATION PHOTOS_2022\016\VISUAL SIMULATION PHOTOS_20230522\VISUAL SIMULATION PHOTOS_20230522.aprx

Existing Conditions

Project Simulation Option 1

231 WTG

Project Simulation Option 2

147 WTG



Horse Heaven
Wind Project



Figure 17
Representative Viewpoint 13
Existing Conditions
and Project Simulations

BENTON COUNTY, WA



Viewpoint Location and
Photo Direction



Project Lease Boundary



Proposed Turbine Location



Proposed Substation/BESS



Proposed Transmission Line

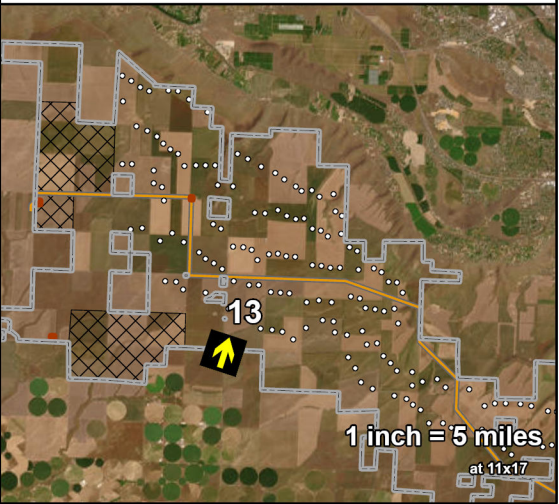


Solar Siting Area

View direction (deg):	18
Horizontal field of view (deg):.....	73
Vertical field of view (deg):.....	19
Max. WTGs within field of view:...	69 / 51
Max. Visible WTGs at tip height:..	69 / 51
Max. Visible WTGs at hub height:	66 / 51
Closest WTG (mi):.....	1.1 / 1.1
Furthest WTG (mi):.....	7.3 / 7.1
Closest Solar Array (mi):.....	No view
Closest Transmission Line (mi):.....	2.0
Closest Substation / BESS (mi):...	No view

To approximate how the project will appear to a viewer in the natural setting, this sheet should be printed at 11 x 17 inches, full size with no scaling, and viewed at 6 inches from the eye. If viewed on a computer monitor, the document should be scaled at 100% and viewed at 6 inches from the eye.

NOT FOR CONSTRUCTION



R:\PROJECTS\HORSE HEAVEN_6430\VIEWSHED\MAPS\VISUAL SIMULATION PHOTOS 20230522\VISUAL SIMULATION PHOTOS 20230522.aprx

As Taken



Sky Replacement and De-hazing



Horse Heaven
Wind Project



Figure 18a
Representative Viewpoint 14

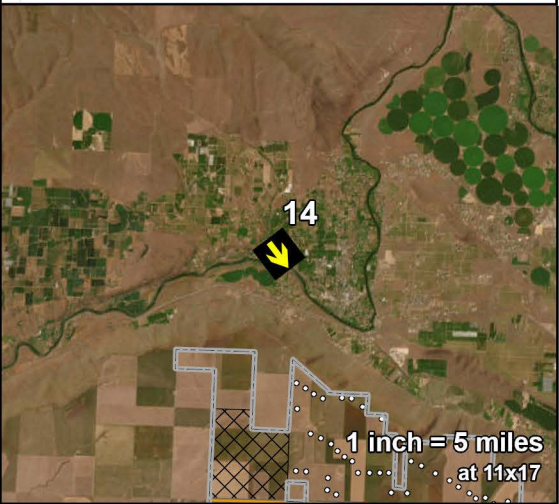
Existing Conditions
BENTON COUNTY, WA

- Viewpoint Location and Photo Direction
- Project Lease Boundary
 - Proposed Turbine Location
- Proposed Substation/BESS
- Proposed Transmission Line
- Solar Siting Area

View direction (deg): 143
Horizontal field of view (deg):..... 79
Vertical field of view (deg):..... 25

To approximate how the project will appear to a viewer in the natural setting, this sheet should be printed at 11 x 17 inches, full size with no scaling, and viewed at 6 inches from the eye. If viewed on a computer monitor, the document should be scaled at 100% and viewed at 6 inches from the eye.

NOT FOR CONSTRUCTION



R:\PROJECTS\HORSE HEAVEN_6430\VIEWSHED\MAPS\VISUAL_SIMULATION_PHOTOS_2022\016\VISUAL_SIMULATION_PHOTOS_2023\052\VISUAL_SIMULATION_PHOTOS_2023\052.aprx

Existing Conditions

Project Simulation Option 1
231 WTG

Project Simulation Option 2
147 WTG



Horse Heaven
Wind Project



Figure 18b
Representative Viewpoint 14

Project Simulations

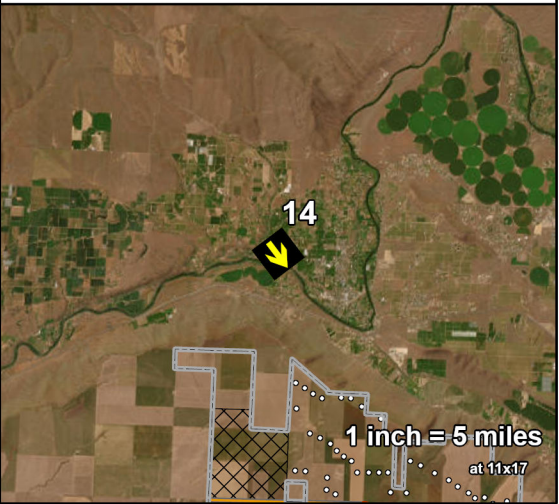
BENTON COUNTY, WA

- Viewpoint Location and Photo Direction
- Project Lease Boundary
 - Proposed Turbine Location
- Proposed Substation/BESS
- Proposed Transmission Line
- Solar Siting Area

View direction (deg):	143
Horizontal field of view (deg):.....	93
Vertical field of view (deg):.....	24
Max. WTGs within field of view:...	231 / 147
Max. Visible WTGs at tip height:..	87 / 63
Max. Visible WTGs at hub height:	51 / 44
Closest WTG (mi):.....	3.8 / 3.9
Furthest WTG (mi):.....	22.4 / 22.4
Closest Solar Array (mi):.....	No view
Closest Transmission Line (mi):.....	No view
Closest Substation / BESS (mi):...	No view

To approximate how the project will appear to a viewer in the natural setting, this sheet should be printed at 11 x 17 inches, full size with no scaling, and viewed at 6 inches from the eye. If viewed on a computer monitor, the document should be scaled at 100% and viewed at 6 inches from the eye.

NOT FOR CONSTRUCTION



R:\PROJECTS\HORSE HEAVEN_6430\VIEWSHED\MAPS\VISUAL_SIMULATION_PHOTOS_20230522\VISUAL_SIMULATION_PHOTOS_20230522.aprx

As Taken



Sky Replacement and De-hazing



Horse Heaven
Wind Project



Figure 19a
Representative Viewpoint 15a

Existing Conditions

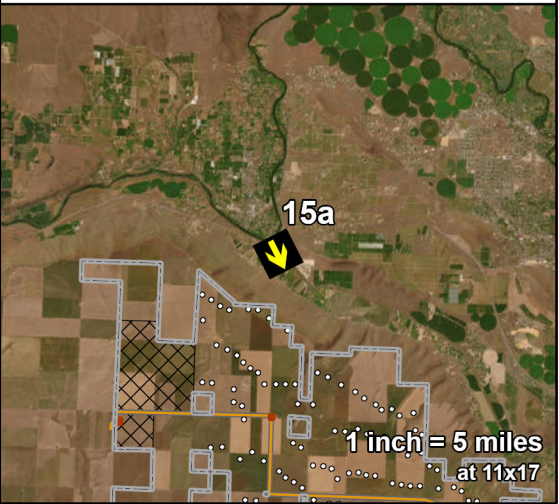
BENTON COUNTY, WA

- Viewpoint Location and Photo Direction
- Project Lease Boundary
 - Proposed Turbine Location
- Proposed Substation/BESS
- Proposed Transmission Line
- Solar Siting Area

View direction (deg): 153
Horizontal field of view (deg):..... 93
Vertical field of view (deg):..... 24

To approximate how the project will appear to a viewer in the natural setting, this sheet should be printed at 11 x 17 inches, full size with no scaling, and viewed at 6 inches from the eye. If viewed on a computer monitor, the document should be scaled at 100% and viewed at 6 inches from the eye.

NOT FOR CONSTRUCTION



R:\PROJECTS\HORSE HEAVEN 6430\VIEWSHED\MAPS\VISUAL SIMULATION PHOTOS 2022\016\VISUAL SIMULATION PHOTOS 2023\052\2VISUAL SIMULATION PHOTOS 2023\052_2.aprx

Existing Conditions



Project Simulation Option 1
231 WTG



Project Simulation Option 2
147 WTG



Horse Heaven
Wind Project



Figure 19b
Representative Viewpoint 15a

Project Simulations

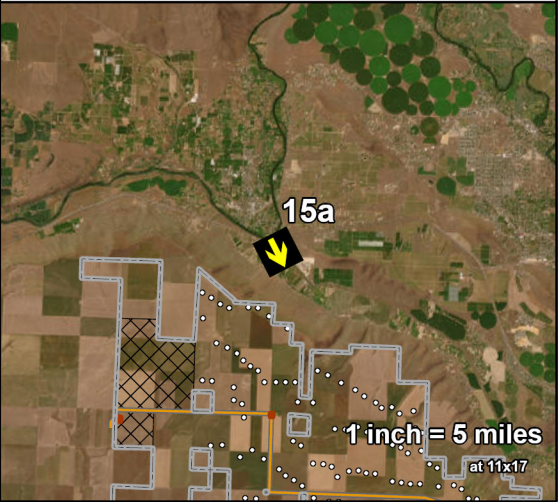
BENTON COUNTY, WA

- Viewpoint Location and Photo Direction
- Project Lease Boundary
 - Proposed Turbine Location
- Proposed Substation/BESS
- Proposed Transmission Line
- Solar Siting Area

View direction (deg):	153
Horizontal field of view (deg):.....	93
Vertical field of view (deg):.....	24
Max. WTGs within field of view:...	221 / 141
Max. Visible WTGs at tip height:..	24 / 22
Max. Visible WTGs at hub height:	11 / 11
Closest WTG (mi):.....	1.7 / 1.7
Furthest WTG (mi):.....	8.6 / 8.6
Closest Solar Array (mi):.....	No view
Closest Transmission Line (mi):.....	No view
Closest Substation / BESS (mi):...	No view

To approximate how the project will appear to a viewer in the natural setting, this sheet should be printed at 11 x 17 inches, full size with no scaling, and viewed at 6 inches from the eye. If viewed on a computer monitor, the document should be scaled at 100% and viewed at 6 inches from the eye.

NOT FOR CONSTRUCTION



R:\PROJECTS\HORSE HEAVEN_6430\VIEWSHED\MAPS\VISUAL SIMULATION PHOTOS_20230522\VISUAL SIMULATION PHOTOS_20230522.aprx

As Taken



Horse Heaven
Wind Project



Figure 20a
Representative Viewpoint 15b

Existing Conditions

BENTON COUNTY, WA

- Viewpoint Location and Photo Direction
- Project Lease Boundary
 - Proposed Turbine Location
- Proposed Substation/BESS
- Proposed Transmission Line
- Solar Siting Area

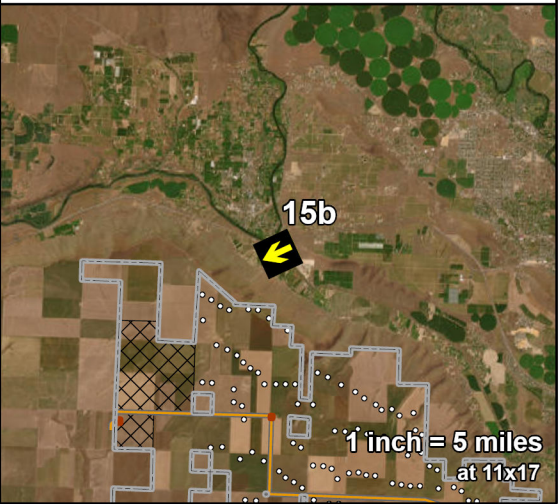
View direction (deg): 245
Horizontal field of view (deg):..... 93
Vertical field of view (deg):..... 24

Sky Replacement and De-hazing



To approximate how the project will appear to a viewer in the natural setting, this sheet should be printed at 11 x 17 inches, full size with no scaling, and viewed at 6 inches from the eye. If viewed on a computer monitor, the document should be scaled at 100% and viewed at 6 inches from the eye.

NOT FOR CONSTRUCTION



R:\PROJECTS\HORSE HEAVEN 6430\VIEWSHED\MAPS\VISUAL SIMULATION PHOTOS 2022\1018\VISUAL SIMULATION PHOTOS 20230522\VISUAL SIMULATION PHOTOS 20230522.aprx

Existing Conditions

Project Simulation Option 1
231 WTG

Project Simulation Option 2
147 WTG



Horse Heaven
Wind Project



Figure 20b
Representative Viewpoint 15b

Project Simulations

BENTON COUNTY, WA



Viewpoint Location and
Photo Direction



Project Lease Boundary



Proposed Turbine Location



Proposed Substation/BESS



Proposed Transmission Line

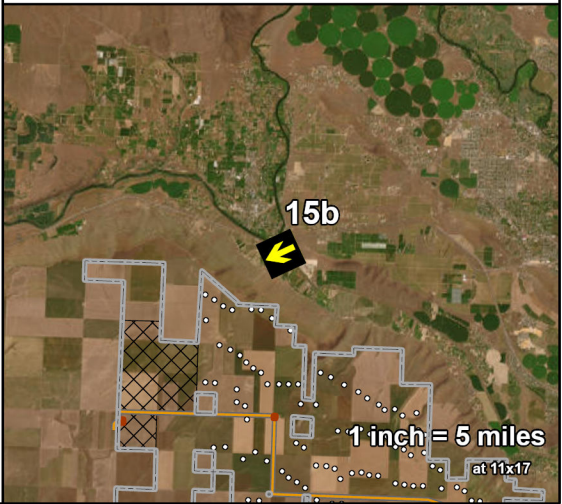


Solar Siting Area

View direction (deg):	245
Horizontal field of view (deg):.....	93
Vertical field of view (deg):.....	24
Max. WTGs within field of view:...	12 / 8
Max. Visible WTGs at tip height:..	2 / 2
Max. Visible WTGs at hub height:	2 / 2
Closest WTG (mi):.....	1.7 / 1.7
Furthest WTG (mi):.....	1.7 / 1.8
Closest Solar Array (mi):.....	No view
Closest Transmission Line (mi):.....	No view
Closest Substation / BESS (mi):...	No view

To approximate how the project will appear to a viewer in the natural setting, this sheet should be printed at 11 x 17 inches, full size with no scaling, and viewed at 6 inches from the eye. If viewed on a computer monitor, the document should be scaled at 100% and viewed at 6 inches from the eye.

NOT FOR CONSTRUCTION



R:\PROJECTS\HORSE HEAVEN_6430\VIEWSHED\MAPS\VISUAL SIMULATION PHOTOS_20230522\VISUAL SIMULATION PHOTOS_20230522.aprx

As Taken



Sky Replacement and De-hazing



Horse Heaven
Wind Project



Figure 21a
Representative Viewpoint 16

Existing Conditions

BENTON COUNTY, WA



Viewpoint Location and Photo
Direction



Project Lease Boundary



Proposed Turbine Location

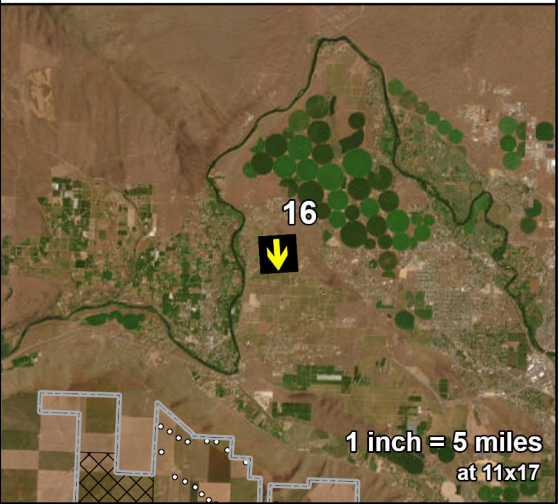


Solar Siting Area

View direction (deg): 176
Horizontal field of view (deg):..... 92.5
Vertical field of view (deg):..... 24.3

To approximate how the project will appear to a viewer in the natural setting, this sheet should be printed at 11 x 17 inches, full size with no scaling, and viewed at 6 inches from the eye. If viewed on a computer monitor, the document should be scaled at 100% and viewed at 6 inches from the eye.

NOT FOR CONSTRUCTION



R:\PROJECTS\HORSE HEAVEN_6430\VIEWSHED\MAPS\VISUAL_SIMULATION_PHOTOS_2022\016\VISUAL_SIMULATION_PHOTOS_2023\052\VISUAL_SIMULATION_PHOTOS_2023\052_2023.aprx

Existing Conditions



Project Simulation Option 1
231 WTG



Project Simulation Option 2
147 WTG



Horse Heaven
Wind Project



Figure 21b
Representative Viewpoint 16

Project Simulations

BENTON COUNTY, WA



Viewpoint Location and
Photo Direction



Project Lease Boundary



Proposed Turbine Location

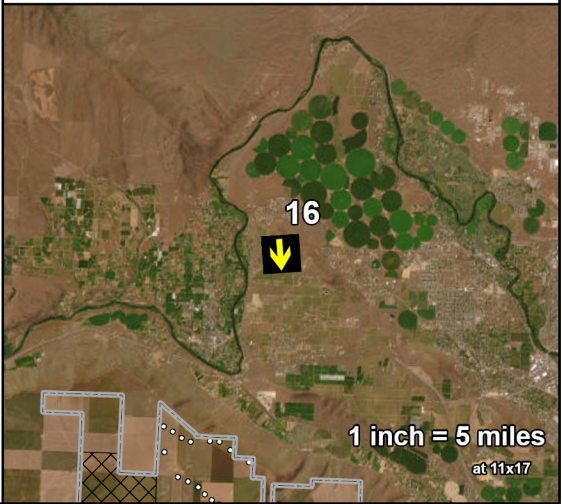


Solar Siting Area

View direction (deg):	176
Horizontal field of view (deg):.....	92.5
Vertical field of view (deg):.....	24.3
Max. WTGs within field of view:...	212 / 138
Max. Visible WTGs at tip height:..	146 / 115
Max. Visible WTGs at hub height:	83 / 78
Closest WTG (mi):.....	5.2 / 5.2
Furthest WTG (mi):.....	19.5 / 19.5
Closest Solar Array (mi):.....	No view
Closest Transmission Line (mi):.....	No view
Closest Substation / BESS (mi):...	No view

To approximate how the project will appear to a viewer in the natural setting, this sheet should be printed at 11 x 17 inches, full size with no scaling, and viewed at 6 inches from the eye. If viewed on a computer monitor, the document should be scaled at 100% and viewed at 6 inches from the eye.

NOT FOR CONSTRUCTION



R:\PROJECTS\HORSE HEAVEN_6430\VIEWSHED\MAPS\VISUAL SIMULATION PHOTOS_20230522\VISUAL SIMULATION PHOTOS_20230522.aprx

As Taken



Sky Replacement and De-hazing



Horse Heaven
Wind Project



Figure 22a
Representative Viewpoint 17

Existing Conditions

BENTON COUNTY, WA



Viewpoint Location and Photo
Direction



Project Lease Boundary



Proposed Turbine Location

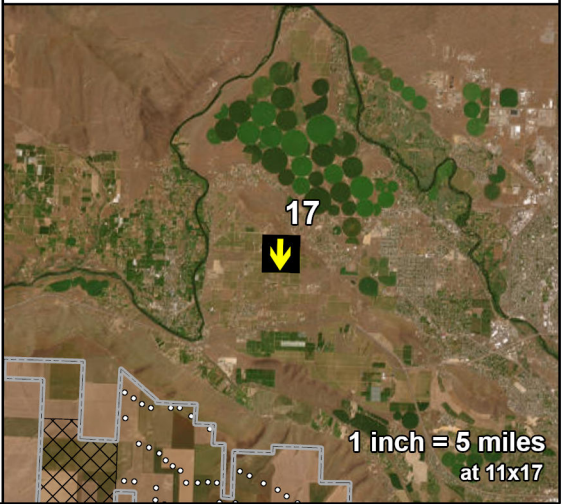


Solar Siting Area

View direction (deg): 181
Horizontal field of view (deg):..... 92.5
Vertical field of view (deg):..... 24.3

To approximate how the project will appear to a viewer in the natural setting, this sheet should be printed at 11 x 17 inches, full size with no scaling, and viewed at 6 inches from the eye. If viewed on a computer monitor, the document should be scaled at 100% and viewed at 6 inches from the eye.

NOT FOR CONSTRUCTION



R:\PROJECTS\HORSE HEAVEN_6430\VIEWSHED\MAPS\VISUAL_SIMULATION_PHOTOS_2022\016\VISUAL_SIMULATION_PHOTOS_2023\052\VISUAL_SIMULATION_PHOTOS_2023\052_20230522.aprx

Existing Conditions

Project Simulation Option 1
231 WTG

Project Simulation Option 2
147 WTG



Horse Heaven
Wind Project



Figure 22b
Representative Viewpoint 17

Project Simulations

BENTON COUNTY, WA



Viewpoint Location and
Photo Direction



Project Lease Boundary



Proposed Turbine Location

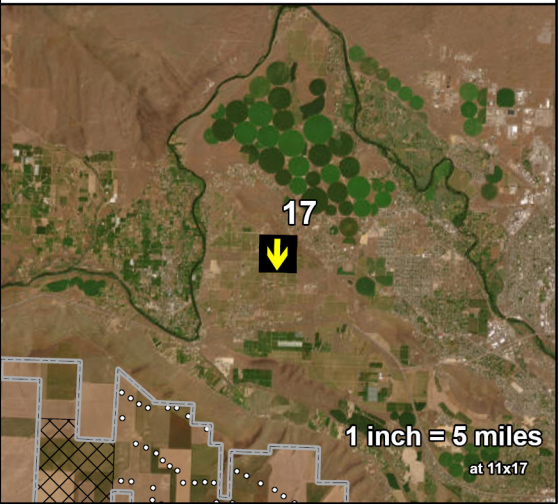


Solar Siting Area

View direction (deg):	181
Horizontal field of view (deg):.....	92.5
Vertical field of view (deg):.....	24.3
Max. WTGs within field of view:...	199 / 132
Max. Visible WTGs at tip height:..	157 / 119
Max. Visible WTGs at hub height:	102 / 85
Closest WTG (mi):.....	4.8 / 4.8
Furthest WTG (mi):.....	22.4 / 22.4
Closest Solar Array (mi):.....	No view
Closest Transmission Line (mi):.....	No view
Closest Substation / BESS (mi):...	No view

To approximate how the project will appear to a viewer in the natural setting, this sheet should be printed at 11 x 17 inches, full size with no scaling, and viewed at 6 inches from the eye. If viewed on a computer monitor, the document should be scaled at 100% and viewed at 6 inches from the eye.

NOT FOR CONSTRUCTION



R:\PROJECTS\HORSE HEAVEN_6430\VIEWSHED\MAPS\VISUAL SIMULATION PHOTOS 20230522\VISUAL SIMULATION PHOTOS 20230522.aprx

As Taken



Sky Replacement and De-hazing



Horse Heaven
Wind Project



Figure 23a
Representative Viewpoint 18

Existing Conditions

BENTON COUNTY, WA



Viewpoint Location and Photo
Direction



Project Lease Boundary



Proposed Turbine Location

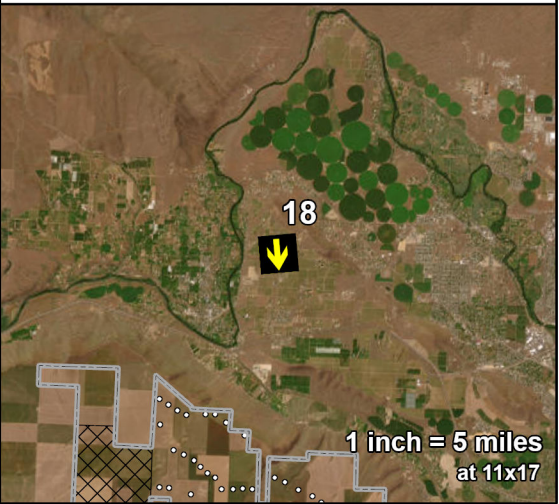


Solar Siting Area

View direction (deg): 175
Horizontal field of view (deg):..... 92.5
Vertical field of view (deg):..... 24.3

To approximate how the project will appear to a viewer in the natural setting, this sheet should be printed at 11 x 17 inches, full size with no scaling, and viewed at 6 inches from the eye. If viewed on a computer monitor, the document should be scaled at 100% and viewed at 6 inches from the eye.

NOT FOR CONSTRUCTION



R:\PROJECTS\HORSE HEAVEN_6430\VIEWSHED\MAPS\VISUAL_SIMULATION_PHOTOS_2022\016\VISUAL_SIMULATION_PHOTOS_2023\052\2307X

Existing Conditions

Project Simulation Option 1
231 WTG

Project Simulation Option 2
147 WTG



Horse Heaven
Wind Project



Figure 23b
Representative Viewpoint 18

Project Simulations

BENTON COUNTY, WA



Viewpoint Location and
Photo Direction



Project Lease Boundary



Proposed Turbine Location

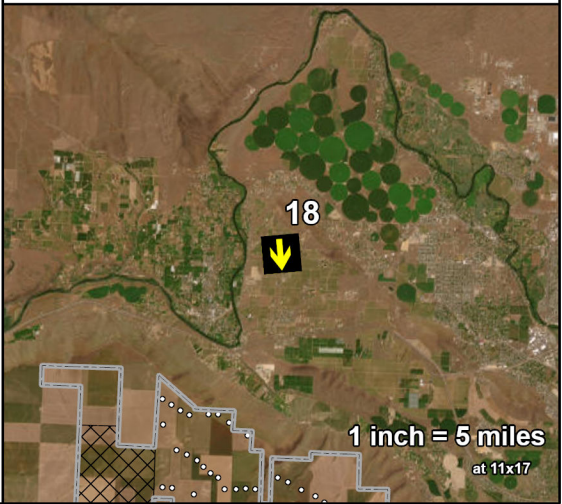


Solar Siting Area

View direction (deg):	175
Horizontal field of view (deg):.....	92.5
Vertical field of view (deg):.....	24.3
Max. WTGs within field of view:...	212 / 138
Max. Visible WTGs at tip height:..	61 / 62
Max. Visible WTGs at hub height:	37 / 31
Closest WTG (mi):.....	4.5 / 4.5
Furthest WTG (mi):.....	23.200001 / 23.1
Closest Solar Array (mi):.....	No view
Closest Transmission Line (mi):.....	No view
Closest Substation / BESS (mi):...	No view

To approximate how the project will appear to a viewer in the natural setting, this sheet should be printed at 11 x 17 inches, full size with no scaling, and viewed at 6 inches from the eye. If viewed on a computer monitor, the document should be scaled at 100% and viewed at 6 inches from the eye.

NOT FOR CONSTRUCTION



R:\PROJECTS\HORSE HEAVEN_6430\VIEWSHED\MAPS\VISUAL SIMULATION PHOTOS 2022\0522\VISUAL SIMULATION PHOTOS 2023\0522\APR17

As Taken



Sky Replacement and De-hazing



Horse Heaven
Wind Project



Figure 24a
Representative Viewpoint 19

Existing Conditions

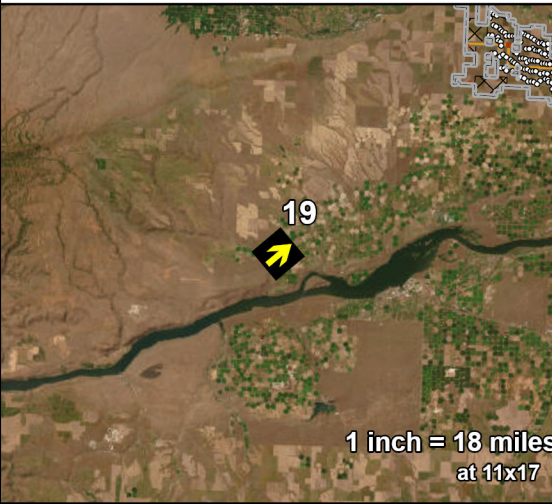
BENTON COUNTY, WA

- Viewpoint Location and Photo Direction
- Project Lease Boundary
 - Proposed Turbine Location
- Proposed Substation/BESS
- Proposed Transmission Line
- Solar Siting Area

View direction (deg): 50
Horizontal field of view (deg):..... 92.5
Vertical field of view (deg):..... 24.3

To approximate how the project will appear to a viewer in the natural setting, this sheet should be printed at 11 x 17 inches, full size with no scaling, and viewed at 6 inches from the eye. If viewed on a computer monitor, the document should be scaled at 100% and viewed at 6 inches from the eye.

NOT FOR CONSTRUCTION



R:\PROJECTS\HORSE HEAVEN 6430\VIEWSHED\MAPS\VISUAL SIMULATION PHOTOS 2022\016\VISUAL SIMULATION PHOTOS 20230522\VISUAL SIMULATION PHOTOS 20230522.aprx

Existing Conditions

Project Simulation Option 1
231 WTG

Project Simulation Option 2
147 WTG



Horse Heaven
Wind Project



Figure 24b
Representative Viewpoint 19

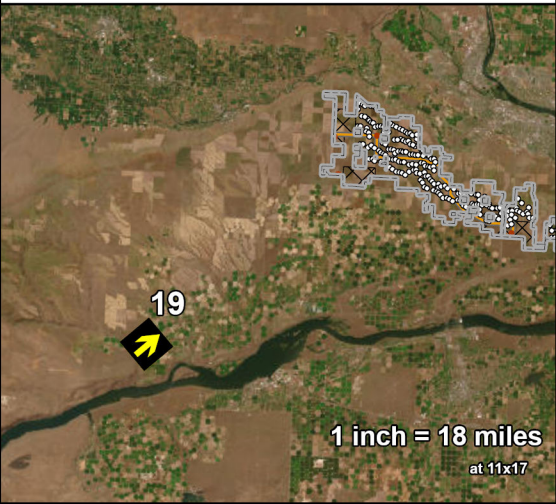
Project Simulations
BENTON COUNTY, WA

- Viewpoint Location and Photo Direction
- Project Lease Boundary
 - Proposed Turbine Location
- Proposed Substation/BESS
- Proposed Transmission Line
- Solar Siting Area

View direction (deg):	50
Horizontal field of view (deg):.....	92.5
Vertical field of view (deg):.....	24.3
Max. WTGs within field of view:...	231 / 147
Max. Visible WTGs at tip height:..	213 / 140
Max. Visible WTGs at hub height:	208 / 139
Closest WTG (mi):.....	26.8 / 27
Furthest WTG (mi):.....	44.8 / 44.2
Closest Solar Array (mi):.....	No view
Closest Transmission Line (mi):.....	No view
Closest Substation / BESS (mi):...	No view

To approximate how the project will appear to a viewer in the natural setting, this sheet should be printed at 11 x 17 inches, full size with no scaling, and viewed at 6 inches from the eye. If viewed on a computer monitor, the document should be scaled at 100% and viewed at 6 inches from the eye.

NOT FOR CONSTRUCTION



Existing Conditions

Project Simulation Option 1
231 WTG

Project Simulation Option 2
147 WTG



Horse Heaven
Wind Project



Figure 25
Representative Viewpoint 20
Existing Conditions
and Project Simulations

BENTON COUNTY, WA



Viewpoint Location and
Photo Direction



Project Lease Boundary



Proposed Turbine Location



Proposed Substation/BESS



Proposed Transmission Line

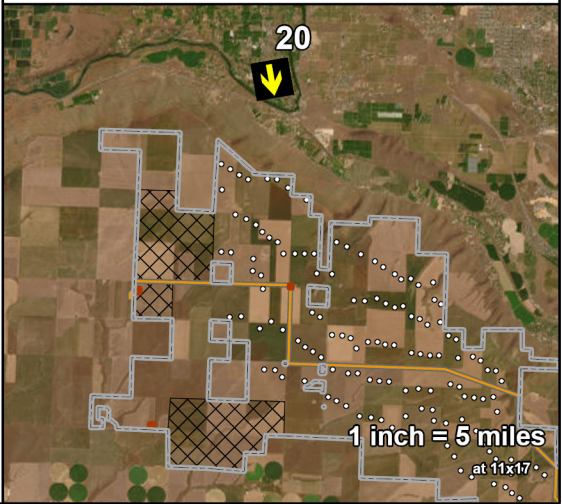


Solar Siting Area

View direction (deg):	170
Horizontal field of view (deg):.....	73
Vertical field of view (deg):.....	19
Max. WTGs within field of view:...	174 / 117
Max. Visible WTGs at tip height:..	4 / 7
Max. Visible WTGs at hub height:	4 / 4
Closest WTG (mi):.....	2.6 / 2.6
Furthest WTG (mi):.....	3.3 / 4.8
Closest Solar Array (mi):.....	No view
Closest Transmission Line (mi):.....	No view
Closest Substation / BESS (mi):..	No view

To approximate how the project will appear to a viewer in the natural setting, this sheet should be printed at 11 x 17 inches, full size with no scaling, and viewed at 6 inches from the eye. If viewed on a computer monitor, the document should be scaled at 100% and viewed at 6 inches from the eye.

NOT FOR CONSTRUCTION



R:\PROJECTS\HORSE HEAVEN_6430\VIEWSHED\MAPS\VISUAL SIMULATION PHOTOS_2022\04\08\VISUAL SIMULATION PHOTOS_2023\05\02\VISUAL SIMULATION PHOTOS_2023\05\02.aprx

Existing Conditions

Project Simulation Option 1
231 WTG

Project Simulation Option 2
147 WTG



Horse Heaven
Wind Project



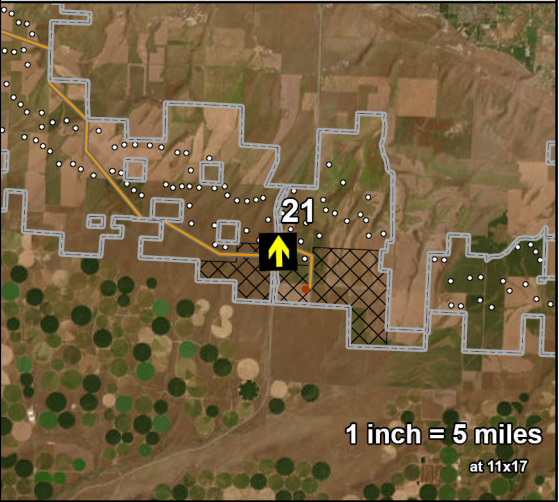
Figure 26
Representative Viewpoint 21
Existing Conditions
and Project Simulations
BENTON COUNTY, WA

- Viewpoint Location and Photo Direction
- Project Lease Boundary
 - Proposed Turbine Location
- Proposed Substation/BESS
- Proposed Transmission Line
- Solar Siting Area

View direction (deg):	359
Horizontal field of view (deg):.....	73
Vertical field of view (deg):.....	19
Max. WTGs within field of view:...	9 / 5
Max. Visible WTGs at tip height:..	9 / 5
Max. Visible WTGs at hub height:	9 / 5
Closest WTG (mi):.....	0.7 / 0.7
Furthest WTG (mi):.....	1.6 / 1.9
Closest Solar Array (mi):.....	No view
Closest Transmission Line (mi):.....	0.1
Closest Substation / BESS (mi):...	No view

To approximate how the project will appear to a viewer in the natural setting, this sheet should be printed at 11 x 17 inches, full size with no scaling, and viewed at 6 inches from the eye. If viewed on a computer monitor, the document should be scaled at 100% and viewed at 6 inches from the eye.

NOT FOR CONSTRUCTION



R:\PROJECTS\HORSE HEAVEN_6430\VIEWSHED\MAPS\VISUAL_SIMULATION_PHOTOS_20221018\VISUAL_SIMULATION_PHOTOS_20230522\VISUAL_SIMULATION_PHOTOS_20230522.aprx

Existing Conditions



Project Simulation Option 1
231 WTG



Project Simulation Option 2
147 WTG



Horse Heaven
Wind Project



Figure 27
Representative Viewpoint 22
Existing Conditions
and Project Simulations

BENTON COUNTY, WA



Viewpoint Location and
Photo Direction



Project Lease Boundary



Proposed Turbine Location

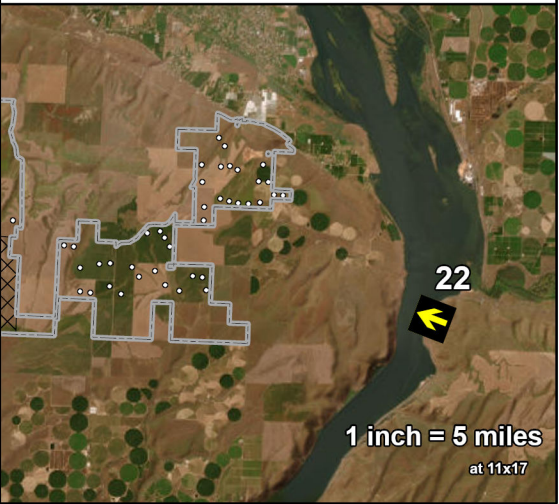


Solar Siting Area

View direction (deg):	291
Horizontal field of view (deg):.....	73
Vertical field of view (deg):.....	19
Max. WTGs within field of view:...	231 / 147
Max. Visible WTGs at tip height:..	23 / 13
Max. Visible WTGs at hub height:	20 / 10
Closest WTG (mi):.....	5 / 5.4
Furthest WTG (mi):.....	7.7 / 7.7
Closest Solar Array (mi):.....	No view
Closest Transmission Line (mi):.....	No view
Closest Substation / BESS (mi):...	No view

To approximate how the project will appear to a viewer in the natural setting, this sheet should be printed at 11 x 17 inches, full size with no scaling, and viewed at 6 inches from the eye. If viewed on a computer monitor, the document should be scaled at 100% and viewed at 6 inches from the eye.

NOT FOR CONSTRUCTION



R:\PROJECTS\HORSE HEAVEN_243\VIEWSET\MAPS\VISUAL SIMULATION PHOTOS_2022\016\VISUAL SIMULATION PHOTOS_2023\052\VISUAL SIMULATION PHOTOS_2023\052_441X

Existing Conditions

Project Simulation Option 1

231 WTG

Project Simulation Option 2

147 WTG



Horse Heaven
Wind Project



Figure 28
Representative Viewpoint 23
Existing Conditions
and Project Simulations
BENTON COUNTY, WA



Viewpoint Location and
Photo Direction



Project Lease Boundary



Proposed Turbine Location



Solar Siting Area

View direction (deg):	286
Horizontal field of view (deg):.....	73
Vertical field of view (deg):.....	20
Max. WTGs within field of view:...	231 / 147
Max. Visible WTGs at tip height:..	/
Max. Visible WTGs at hub height:	/
Closest WTG (mi):.....	/
Furthest WTG (mi):.....	/
Closest Solar Array (mi):.....	No view
Closest Transmission Line (mi):.....	No view
Closest Substation / BESS (mi):...	No view

To approximate how the project will appear to a viewer in the natural setting, this sheet should be printed at 11 x 17 inches, full size with no scaling, and viewed at 6 inches from the eye. If viewed on a computer monitor, the document should be scaled at 100% and viewed at 6 inches from the eye.

NOT FOR CONSTRUCTION

