

1 TCC
2 Pre-Filed Testimony
3 Paul Krupin
4 EXH-5303_T

5 BEFORE THE STATE OF WASHINGTON
6 ENERGY FACILITY SITING EVALUATION COUNCIL

7 In the Matter of the Application of:

DOCKET NO. EF-210011

8 Scout Clean Energy, LLC, for
9 Horse Heaven Wind Farm, LLC,
Applicant.

PRE-FILED TESTIMONY OF TCC
WITNESS PAUL KRUPIN

10
11 Q: Did you read and study and understand statement by Judge Adam Torem in the
12 Preliminary Hearing Order #2 that states the following:
13

14 *"1 Any party wishing to present witness(es) on "Local Concerns, Attitudes and*
15 *Opinions" should justify the witness' significance as a representative of the*
16 *local area and ability to speak for the community-at-large and understand they*
17 *will be subject to cross-examination. This category is not public comment that*
18 *will be heard per RCW 80.50.090(4)."*
19

20 A: Yes, I read and carefully PHO # 2, and worked with TCC board members to reach
21 out to leaders and organizations in the community to address the Judge's
22 requirements.
23

24 Q: What were the results of these efforts?
25
26

1 A: Copies of the newspaper articles and editorial board opinions, letters and
2 resolutions are provided in the following links and attachments.

- 3 • [Tri-City Herald Editorial Board Opinion May 17, 2023](#) (link to pdf file and also
4 attached.
- 5 • [Tri-City Herald article on Gov Inslee signing the ADLS Bill May 10, 2023](#) attached and
6 link
- 7 • Tri-City Herald article on Wind Turbines – ADLS Bill March 15, 2023 attached
- 8 • Tri-City Herald article on HHH Wind Turbine Project January 17, 2023 attached
- 9 • Visit Tri-Cities Washington letter attached
- 10 • Richland City Council Resolution No. 2023-76 attached
- 11 • Tri-City Regional Chamber of Commerce letter attached
- 12 • Lower Columbia Basin Audubon Society Letter attached
- 13 • Tri-City Board of Realtors Letter attached

HOMEPAGE

Wind turbine lights need an off switch. Here's your chance to tell the WA Senate

BY THE TRI-CITY HERALD EDITORIAL BOARD

MARCH 15, 2023 11:03 AM



Scout Clean Energy plans a wind farm on Benton County farm land south of the Tri-Cities along the Horse Heaven Hills ridgeline south of Badger Road.

An important bill that would restrict the constant nighttime blinking of red lights on top of wind turbines is getting a hearing Friday, and the more Tri-Citians who testify the better.

You can either submit a written statement or sign up to speak virtually.

And of course, you also can drive over to Olympia and speak in person to committee members.

That's what Paul Krupin, a Kennewick scientist and attorney, plans to do.

He is a member of [Tri-Cities CARES](#) — Community Action for Responsible Environmental Stewardship. The group is leading the effort opposing a plan by Scout Clean Energy to line the Horse Heaven Hills skyline with wind turbines from Finley to Benton City.

While the struggle against the wind farm proposal continues, Rep. April Connors, R-Kennewick, is doing her best to help mitigate the damage should the state ultimately approve the [wind farm proposal](#).

She is sponsoring [ESHB 1173](#), which would require that wind turbines in Washington state be equipped with Aircraft Detection Lighting Systems (ADLS).

The devices eliminate the need for the non-stop blinking of red lights on the top of wind turbines during the night. Instead, the automatic detection system turns the lights on only when low-flying airplanes are near and then shuts them off after the plane has passed.

In a stunner win, the bill [was approved 94-1](#) by House members last month. Now it is making its way through the Senate.

But Krupin is not taking anything for granted. He told the Tri-City Herald there is no such thing as a slam-dunk in politics.

He said the more public comment on the issue, the better. It will help let legislators know the extent to which Eastern Washington communities are affected by wind turbines pocking the landscape.

While Connors' bill would definitely apply to future wind turbine projects like the Horse Heaven Hills plan, Krupin said it also will help people who currently have to deal with blinking red lights shining through their windows at night.

In our region, that means wind turbines from the Tri-Cities to Walla Walla would eventually go dark most of the time.

Last month, Richland scientist and energy expert James Conca, told members of the House that those blinking lights are only necessary 2% to 3% of the time.

So why must they be on constantly? This bill is a no-brainer in our book.

Anything that reduces night sky pollution should be embraced.

In urban areas, artificial lights are blamed for obscuring the stars. In rural areas, artificial lights can confuse nocturnal wildlife.

They also can be distracting to drivers if they can be seen from the road.

The proposed Horse Heaven Clean Energy project would be visible at night up to 20 to 30 miles away, according to Krupin.

And more than 100,000 people would live within six miles of the turbines, with the majority of them in city limits. That's based on an analysis done by Tri-Cities CARES.

If Connors' bill is approved, Washington would join North and South Dakota, Vermont and New Hampshire in requiring ADLS on wind turbines. And the technology is, of course, approved by the Federal Aviation Administration.

Connors told the Herald that this year Germany began requiring aircraft detection lighting systems for every turbine in the country.

The opposing argument against the ADLS requirement is the cost. But Conca estimated that the lighting systems would cost 0.1% of the total cost of the Horse Heaven Clean Energy Center.

According to an [earlier Herald news story](#), Conca said, "These folks are making tons of money on these projects, most of which goes out of state. So they can certainly do something for the people of this state who are bearing the burden and getting almost none of the benefit."

We agree.

The hearing Friday, March 17, is scheduled for 8 a.m. with the State Senate Environment, Energy & Technology Committee.

To submit a written testimony or to sign up to testify, go to <https://app.leg.wa.gov/csi/Senate> and follow the instructions and fill out the form with the "PRO" position if you are in favor of Connors' bill.

RELATED STORIES FROM TRI-CITY HERALD

EDITORIALS

Tri-Citians are being asked to give up too much for Horse Heaven Hills wind farm | Opinion

JANUARY 20, 2023 10:00 AM

LOCAL

WA House votes 94-1 to limit light pollution from wind energy farms

FEBRUARY 28, 2023 5:00 AM

LOCAL

WA Gov. Inslee signs bill limiting wind turbine lights. But he vetoes local control

BY ANNETTE CARY

MAY 10, 2023 5:00 AM



Only have a minute? Listen instead

Powered by Trinity Audio



00:00

04:36

OLYMPIA, WA

Wind turbine farms in Washington state will be required to turn their blinking red lights off at night when no low-flying aircraft are near after [Gov. Jay Inslee signed](#) the requirement into law Tuesday.

The bill will take effect July 1 for new wind farms.

Existing wind farms in Washington with at least five or more turbines must apply to the Federal Aviation Administration by Jan. 1, 2028, for approval of a lighting system that detects approaching aircraft and have it installed within two years of approval.

[Rep. April Connors, R-Kennewick](#), who sponsored the bill, was concerned that Inslee would veto it.



Rep. April Connors

The bill eventually had support from Energy Northwest, PacifiCorp and Puget Sound Energy, she said. But other clean power organizations and companies were lobbying against the bill, which would increase their wind farm costs, she said.

Inslee told her during a visit to the Tri-Cities last week, at which he signed other bills, that he would call her if there were any problems with the bill, Connors said.

So she was surprised when the governor vetoed two sections of the bill Tuesday without discussing it with her, she said.

WASH. BILL SECTION VETOES

One was an emergency clause that would have the bill take effect immediately. Connors said the governor had canceled emergency clauses in other bills this session.

The other section the governor vetoed would have provided counties in the state some local control.

It would have given county commissioners authority to establish the amount of light pollution that would be allowed, whether it was with new technology approved in the future by the FAA or deciding that a wind farm in a remote area did not need to reduce its light pollution.

Inslee said as he signed the bill that he was looking forward to discussing options that might be needed to support wind farm developers with retrofitting lights.

"I wasn't super excited to have those section vetoes, but I am extremely happy we got this passed," Connors said.

[House Bill 1173](#) as signed will require turbines at wind power farms in Washington to be equipped with aircraft detection lighting systems that meet Federal Aviation Administration standards.



Scout Clean Energy plans a wind farm on Benton County farm land south of the Tri-Cities along the Horse Heaven Hills ridgeline south of Badger Road.

The systems would turn on flashing red lights on turbines when low-flying aircraft are near and then turn them off when they are safely passed.

The new requirement for wind farms ensures “wind farms are good neighbors and minimizes light pollution for communities,” the governor read as he signed the bill.

Several other sites already require FAA-approved devices that use sensors to detect approaching aircraft and then turn on turbine lights for their safety.

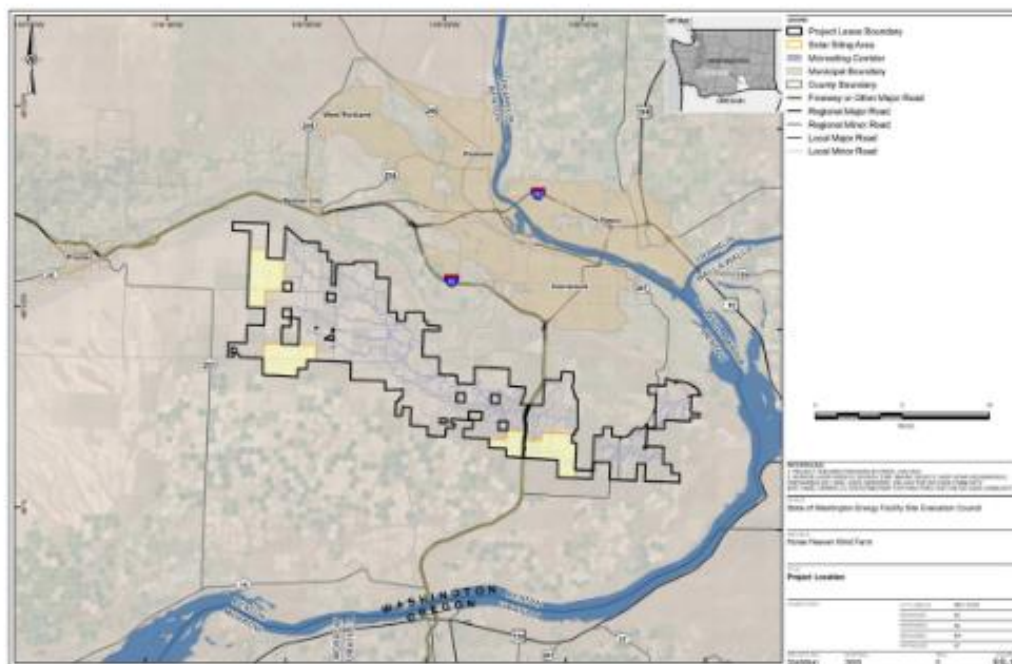
Paul Krupin, a Kennewick scientist and attorney, said at a legislative committee hearing that the bill could reduce at least somewhat public opposition to nearby wind turbines. It also could diminish the perceived risks of harm to property values and tourism, he said.

WIND FARM PROPOSED BY KENNEWICK

Krupin, along with key members of [nonprofit Tri-Cities CARES](#), or Community Action for Responsible Environmental Stewardship, met with Connors to suggest a turbine lighting law for Washington state.

The wind turbine lights would cost less than 1% of the entire cost of the Horse Heaven Clean Energy Center wind farm, said James Conca, a Richland scientist, speaking at House and Senate committee hearings before the bill passed.

If lights were only activated when low-flying aircraft were near they would be on only 2% to 3% of the time, he said.



The boundary of the proposed Horse Heaven Clean Energy Center south of the Tri-Cities is shown. Solar arrays could be in the yellow areas of the map. *Environmental Facility Site Evaluation Council*

“I am not a fan of the Horse Heaven wind farm by any means or stretch,” Connors said. “If it does happen in the Tri-Cities, I think it is going to have a big impact on our night skies.”

"I am not a fan of the Horse Heaven wind farm by any means or stretch," Connors said. "If it does happen in the Tri-Cities, I think it is going to have a big impact on our night skies."

Scout Clean Energy is proposing up to [244 wind turbines](#) to stretching along the Horse Heaven Hills from south of Finley to south of Benton City.

At a minimum they would be 500 feet tall, or an alternate plan would have 150 turbines extending about 670 feet tall.

The wind farm is proposed to be built within six miles of the homes of more than 100,000 people, Krupin said. More than 250,000 people living in Benton and Franklin County will [see the wind turbines](#), he said.

Connors' bill passed the House and Senate with just one member in each opposed. She credited Sen. Matt Boehnke, R-Kennewick, with helping win support in the Senate, and then support from Democrats in the Senate and House to help convince the governor to sign the bill.

HOMEPAGE

Wind turbine lights need an off switch. Here's your chance to tell the WA Senate

BY THE TRI-CITY HERALD EDITORIAL BOARD

MARCH 15, 2023 11:03 AM



Scout Clean Energy plans a wind farm on Benton County farm land south of the Tri-Cities along the Horse Heaven Hills ridgeline south of Badger Road.

An important bill that would restrict the constant nighttime blinking of red lights on top of wind turbines is getting a hearing Friday, and the more Tri-Citians who testify the better.

You can either submit a written statement or sign up to speak virtually.

And of course, you also can drive over to Olympia and speak in person to committee members.

That's what Paul Krupin, a Kennewick scientist and attorney, plans to do.

He is a member of [Tri-Cities CARES](#) — Community Action for Responsible Environmental Stewardship. The group is leading the effort opposing a plan by Scout Clean Energy to line the Horse Heaven Hills skyline with wind turbines from Finley to Benton City.

While the struggle against the wind farm proposal continues, Rep. April Connors, R-Kennewick, is doing her best to help mitigate the damage should the state ultimately approve the [wind farm proposal](#).

She is sponsoring [ESHB 1173](#), which would require that wind turbines in Washington state be equipped with Aircraft Detection Lighting Systems (ADLS).

The devices eliminate the need for the non-stop blinking of red lights on the top of wind turbines during the night. Instead, the automatic detection system turns the lights on only when low-flying airplanes are near and then shuts them off after the plane has passed.

In a stunner win, the bill [was approved 94-1](#) by House members last month. Now it is making its way through the Senate.

But Krupin is not taking anything for granted. He told the Tri-City Herald there is no such thing as a slam-dunk in politics.

He said the more public comment on the issue, the better. It will help let legislators know the extent to which Eastern Washington communities are affected by wind turbines pocking the landscape.

While Connors' bill would definitely apply to future wind turbine projects like the Horse Heaven Hills plan, Krupin said it also will help people who currently have to deal with blinking red lights shining through their windows at night.

In our region, that means wind turbines from the Tri-Cities to Walla Walla would eventually go dark most of the time.

Last month, Richland scientist and energy expert James Conca, told members of the House that those blinking lights are only necessary 2% to 3% of the time.

So why must they be on constantly? This bill is a no-brainer in our book.

Anything that reduces night sky pollution should be embraced.

In urban areas, artificial lights are blamed for obscuring the stars. In rural areas, artificial lights can confuse nocturnal wildlife.

They also can be distracting to drivers if they can be seen from the road.

The proposed Horse Heaven Clean Energy project would be visible at night up to 20 to 30 miles away, according to Krupin.

And more than 100,000 people would live within six miles of the turbines, with the majority of them in city limits. That's based on an analysis done by Tri-Cities CARES.

If Connors' bill is approved, Washington would join North and South Dakota, Vermont and New Hampshire in requiring ADLS on wind turbines. And the technology is, of course, approved by the Federal Aviation Administration.

Connors told the Herald that this year Germany began requiring aircraft detection lighting systems for every turbine in the country.

The opposing argument against the ADLS requirement is the cost. But Conca estimated that the lighting systems would cost 0.1% of the total cost of the Horse Heaven Clean Energy Center.

According to an [earlier Herald news story](#), Conca said, "These folks are making tons of money on these projects, most of which goes out of state. So they can certainly do something for the people of this state who are bearing the burden and getting almost none of the benefit."

We agree.

The hearing Friday, March 17, is scheduled for 8 a.m. with the State Senate Environment, Energy & Technology Committee.

To submit a written testimony or to sign up to testify, go to <https://app.leg.wa.gov/csi/Senate> and follow the instructions and fill out the form with the "PRO" position if you are in favor of Connors' bill.

RELATED STORIES FROM TRI-CITY HERALD

EDITORIALS

Tri-Citians are being asked to give up too much for Horse Heaven Hills wind farm | Opinion

JANUARY 20, 2023 10:00 AM

LOCAL

WA House votes 94-1 to limit light pollution from wind energy farms

FEBRUARY 28, 2023 5:00 AM

Live in Tri-Cities? Here's how many wind turbines you might soon see from your house

BY ANNETTE CARY

UPDATED JANUARY 17, 2023 11:24 AM

KENNEWICK, WA

"Too many turbines, too close to people" say three Kennewick area residents who crunched the numbers for the proposed [Horse Heaven Clean Energy Center](#).

[Scout Clean Energy](#) proposes two scenarios along the Horse Heaven Hills just south of Kennewick from Finley to Benton City:

- Up to 244 turbines up to 500 feet tall
- Up to 150 turbines up to 670 feet high.

"Benton County people are impacted disproportionately to every other county in the state, in the Northwest and even several states beyond," by wind turbine projects, said Paul Krupin of Kennewick a scientist and attorney who worked on environmental issues for the federal government for three decades.

He and Tri-Cities CARES members Dave Sharp of Kennewick, a retired manager of Wyoming wind farms, and Pam Minelli, a Tri-Cities area homeowner, have been poring over the [Horse Heaven project's draft environmental impact statement](#) to better understand the proposed project and submit public comments on it by the end of the month.

The state Energy Facility Site Evaluation Council will decide whether to recommend the project to Gov. Jay Inslee, who will make the final decision. The nonprofit [Tri-Cities CARES](#), or Community Action for Responsible Environmental Stewardship, was formed to help protect the Horse Heaven Hills habitat and the natural landscape of the Tri-Cities area.

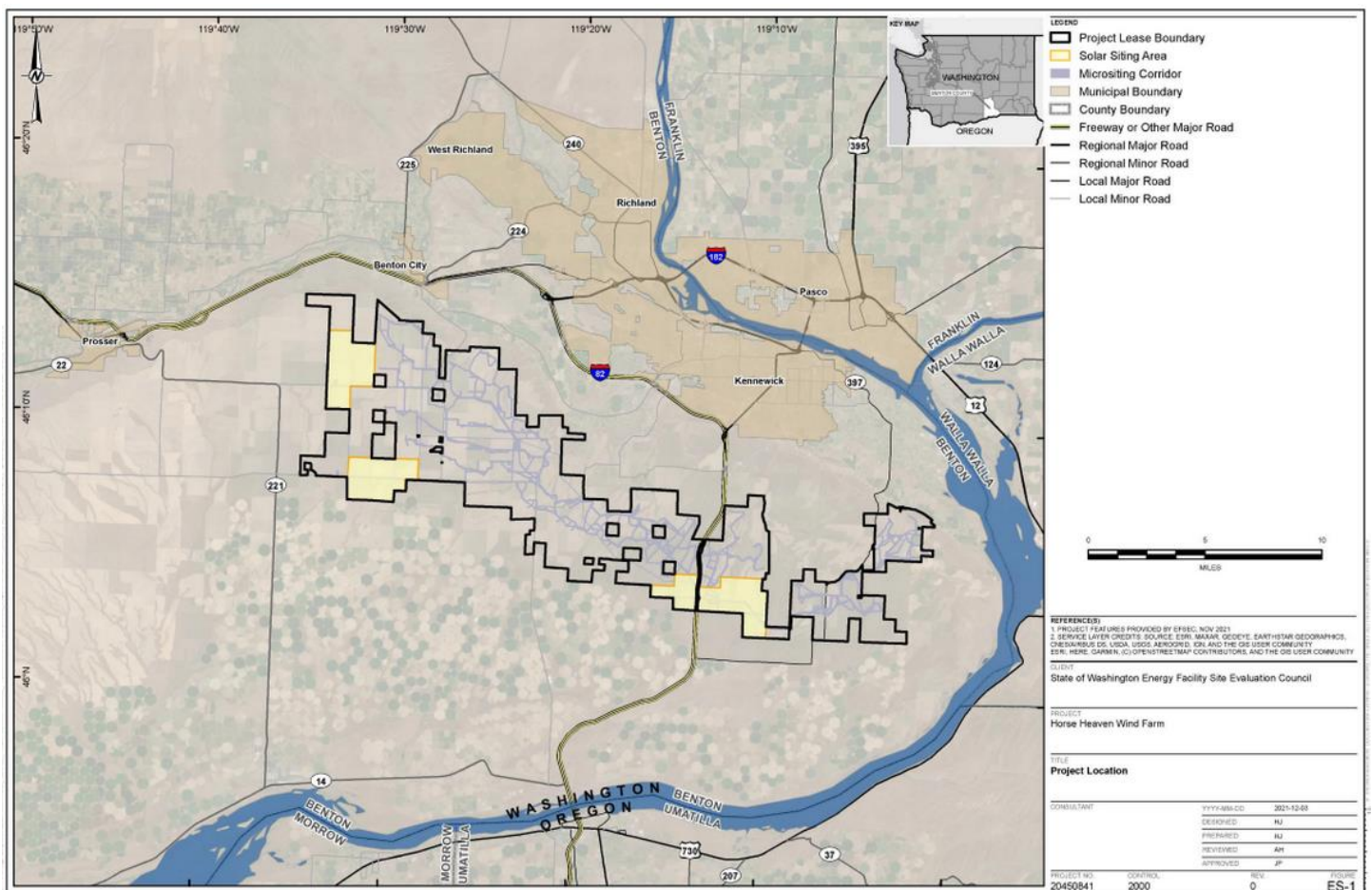


This view from above South Clodfelter Road looks northeast from a proposed Horse Heaven wind turbine site to houses in the Tripplé Vista, Summit View, Badger Mountain South and Rancho Reata developments. Courtesy Bruce Bjornstad

The three found the draft study lacking, including a failure to analyze the proposed wind project's impact on the people who would live near it, they said. They say an analysis shows that the turbines will be visible, including their blinking red lights at night, from many areas of Kennewick, Richland and Pasco.

For instance, more than 100 turbines will be visible from downtown Richland, they say. The view for residents of the Tripple Vista neighborhood between Badger and Clodfelter roads would include 137 to 199 wind turbines during the day and the blinking lights of 148 to 107 turbines at night, according to data the group pulled from the environmental impact statements' visual impact assessment.

The blinking lights are set at the top of the turbine hub, with the blades stretching higher into the sky to be seen during the day. In Franklin County, along the Columbia riverfront the turbines will be visible from the Interstate 82 bridge downriver almost as far as the blue bridge, according to the group's analysis. Even more would be seen at higher elevations in Pasco, although they would be distant.



The boundary of the proposed Horse Heaven Clean Energy Center south of the Tri-Cities is shown. Solar arrays could be in the yellow areas of the map. Environmental Facility Site Evaluation Council

At the top of Webber Canyon, the turbines "will stretch from one horizon to the other," Krupin said. The main I-82 entrance to Kennewick would be flanked by towering turbines, he said.

TRI-CITIES TURBINES VS. WASHINGTON

"You cannot imagine how big this project is until you get down on the ground and see it," Krupin said. "It is huge."

The project will cover 110 square miles, with 105 miles of roads crossing arroyos and other non-agriculture land, Sharp said. Between the Horse Heaven wind farm and the nearby and smaller Nine Canyon wind farm, just over 100,000 residents of Benton County will live within six miles of a turbine, according to the group's computer analysis that relies on U.S. Census tract data.

That's five times more than the estimated 20,000 people who live within six miles of a wind farm across the rest of Washington state, they said. Other Washington state counties with wind farms average about 2,000 people living within six miles, according to the group.

"You just don't develop them in a metropolitan area. They are out in a rural area," Sharp said. And the number of people living near the turbines, should the project go forward as proposed, would increase in time, they said.



This panoramic view looks northeast off Badger Canyon Road shows Badger Mountain, Benton City and towards West Richland through the saddle of Badger and Candy Mountains, at right. Courtesy Bruce Bjornstad

The Nine Canyon project started with about 17,500 residents within six miles in 2000, but due to project expansions and population growth now has about 59,000 people within six miles, they said.

The group picked six miles to analyze as the distance before wind turbines are far enough away to blend into the landscape.

Minelli says her home between I-82 and East Badger Road now has a 180-degree view of countryside, with hawks soaring outside her deck.

"We live there because we like the tranquility of the rural views, the rural sounds," she said. But now she and thousands of others face the industrialization of their rural views, she said. "These projects need to be put in a rural area that doesn't change the lifestyle and the ability of us to enjoy our homes," she said.

FEWER WIND TURBINES POSSIBLE?

Krupin, Sharp and Minelli are calling for Scout Clean Energy to reduce the number of turbines it expects to be most visible to people living in Benton County, which include those in the Horse Heaven Hills wildlife corridor.

[Washington State Fish and Wildlife Department](#) has recommended that wind infrastructure be no closer than a half mile from a wildlife corridor, according to the group.

Although the group found the draft environmental impact statement short on specifics, they think that the number of proposed turbines could be reduced and Scout could still meet its generation goals.

They have been sharing their analysis with local government and other community leaders, but Scout Clean Energy has not seen it. Dave Kobus, senior project manager for the Horse Heaven project, said the process of determining project viability is complicated and requires access to proprietary data, complicated financial modeling and confidential manufacturer data not publicly available.



This view shows the Dennis Road possible wind turbine tower location east of Weber Canyon looking northwest towards Benton City. Courtesy Bruce Bjornstad

He said that the Washington state Energy Facility Site Evaluation Council, or EFSEC, has “run a rigorous, independent analysis spanning nearly two years and is suggesting mitigation measure that go well beyond established precedent in several areas.”

Among mitigation measures suggested in the draft environmental impact statement are requiring turbines to be more than a half mile from residents whose land is not part of the project and steps to prevent or minimize the flickering shadows that could be cast on homes by rotating blades. Measures also are suggested to help protect wildlife.

“We are fully committed to working through the adjudication process and closely reviewing the draft EFSEC document as well as any public comments provided to EFSEC to assure mitigation is appropriate,” Kobus said. “The commercial aspects of the technology selection and placement will continue to be reviewed as we progress through the EFSEC process deliberation,” he said.

The proposed project includes solar panels and battery storage in addition to wind turbines.

COMMENT ON HORSE HEAVEN PROJECT

Public comments on the draft environmental impact statement, or EIS, should be received by EFSEC no later than Feb. 1, according to a recent clarification to the deadline by the state.

Comments may be submitted online at www.comments.efsec.wa.gov. There also is a link there to submit comments for Horse Heaven adjudication, which is a legal proceeding. Comments on the draft Horse Heaven EIS also may be mailed to Energy Facility Site Evaluation Council, 621 Woodland Square Loop SE, Lacey, WA 98504-3172.

This story was originally published January 16, 2023 11:36 AM.



7130 W. Grandridge Blvd., Suite B
Kennewick, WA 99336
509-735-8486
1-800-254-5824
www.VisitTRI-CITIES.com
info@VisitTRI-CITIES.com

May 22, 2023

Tri-Cities C.A.R.E.S.
Board of Directors
1360 N. Louisiana Street. #A-175
Kennewick, WA 99336
info@tricityscare.org

Re: Horse Heaven Wind Project – Support for Community Representation by Tri-Cities C.A.R.E.S.

Dear Tri-Cities C.A.R.E.S Directors,

On behalf of Visit Tri-Cities, the official destination marketing organization for the Tri-Cities community, we would like to express our support for Tri-Cities Community Action for Responsible Environmental Stewardship (Tri-Cities C.A.R.E.S.) and their crucial involvement in the adjudication process for the Horse Heaven Wind Project.

Tourism is a significant economic driver in the Tri-Cities, and as the primary entity responsible for promoting the destination we are concerned about the potential impact proposed sustainable energy initiatives could have on our community. The State's 2021 State Energy Strategy (SES) highlights the importance of public and community participation in shaping energy policies that are informed by local knowledge, meet local needs, and enjoy the support of the local community. Tri-Cities C.A.R.E.S. has consistently championed this principle and played a vital role in ensuring that the voices of our community are heard.

Throughout the adjudication process, Tri-Cities C.A.R.E.S. has effectively articulated the concerns of our community and facilitated local participation. They have been instrumental in educating the public and our business community about the potential implications of the Horse Heaven Wind Project. By coordinating written and verbal comments, they have provided a platform for the expression of our collective views. As the sole approved non-regulatory/non-tribal local intervenor in adjudication, Tri-Cities C.A.R.E.S. serves as the representative voice of the broader Tri-Cities community and we support your role in reflecting the sentiments of our community.

Sincerely,

A handwritten signature in blue ink, appearing to read "Kevin Lewis".

Kevin Lewis
President & CEO
Visit Tri-Cities



RESOLUTION NO. 2023-76

**A RESOLUTION OF THE CITY OF RICHLAND, WASHINGTON,
SUPPORTING TRI-CITIES C.A.R.E.S. AS INTERVENOR IN THE
HORSE HEAVEN WIND FARM PROJECT ADJUDICATION.**

WHEREAS, on February 8, 2021, the State of Washington Energy Facility Site Evaluation Council (EFSEC) received an Application for a Site Certification (ASC) from Horse Heaven Wind Farm, LLC proposing the construction and operation of the Horse Heaven Wind Farm Project consisting of 244 wind turbines, two (2) solar arrays, and two (2) battery storage systems; and

WHEREAS, on February 1, 2023, Richland Mayor Terry Christensen, on behalf of the Richland City Council, signed and delivered a letter to EFSEC opposing the project; and

WHEREAS, the Tri-Cities Community Action for Responsible Environmental Stewardship (C.A.R.E.S.), a local 501(c)(3) nonprofit organization incorporated under the laws of the state of Washington, has been granted Intervenor status in the EFSEC Adjudication to represent the interests of Tri-Cities residents; and

WHEREAS, the interests of the Richland City Council and Tri-Cities C.A.R.E.S. are aligned regarding the proposed Horse Heaven Wind Farm Project.

NOW, THEREFORE, BE IT RESOLVED by the City Council of the City of Richland that the City Council formally recognizes and supports Tri-Cities C.A.R.E.S. as Intervenor in the Horse Heaven Wind Farm Project for purposes of EFSEC Adjudication (permitting).

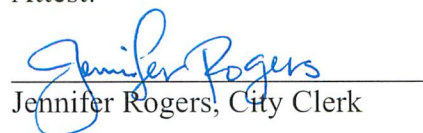
BE IT FURTHER RESOLVED that Mayor Christensen is authorized to execute letters of support on behalf of Tri-Cities C.A.R.E.S. upon request.

BE IT FURTHER RESOLVED that this Resolution shall take effect immediately.

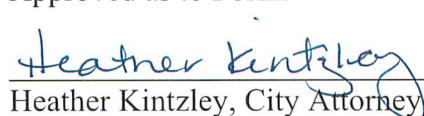
ADOPTED by the City Council of the City of Richland, Washington, at a regular meeting on the 6th day of June, 2023.


Terry Christensen, Mayor

Attest:


Jennifer Rogers, City Clerk

Approved as to Form:


Heather Kintzley, City Attorney



May 22, 2023

Tri-Cities C.A.R.E.S.
Board of Directors
1360 N. Louisiana Street. #A-175
Kennewick, WA 99336
info@tricityscare.org

Re: Horse Heaven Wind Project – Support for Community and Business Representation by
Tri-Cities C.A.R.E.S.

Dear Tri-Cities C.A.R.E.S. Directors,

The Tri-City Regional Chamber of Commerce is the fifth largest chamber in the state representing over 900 businesses ranging from sole proprietors to the largest employers in Benton and Franklin Counties. We endorse the representation of Tri-Cities Community Action for Responsible Environmental Stewardship (Tri-Cities C.A.R.E.S.) and vest our support for your role in communicating the relevant position of the community in regard to the Horse Heaven Wind Project.

In furtherance of the State's 2021 State Energy Strategy (SES), Tri-Cities C.A.R.E.S. has been a constant champion for the tenet that "public and community participation is important to ensure energy policy is informed by local knowledge, meets local needs and is viewed as legitimate by the local community." In the limited forum of adjudication, we observe that you present factual articulation of community concerns, ensure local participation, and act as the ideal neutral advocate to identify experts most appropriate to weigh in on this project proposal.

Tri-Cities C.A.R.E.S. has been instrumental in informing the public and our business community about the unmitigated implications of the project and ensuring that our voices are heard by coordinating written and verbal comments at each opportunity. As the only approved non-regulatory/non-tribal local intervener in adjudication we support your role in representing the voice of the Tri-Cities region.

Sincerely,

A handwritten signature in black ink, reading "Lori Mattson". The signature is fluid and cursive, with a long, sweeping underline.

Lori Mattson, IOM
President/CEO



Lower Columbia Basin Audubon Society

A CHAPTER OF THE NATIONAL AUDUBON SOCIETY

P.O. Box 1900

• Richland, WA 99352

• (509) 545-6115

June 1, 2023

Tri-Cities C.A.R.E.S.
Board of Directors
1360 N. Louisiana Street #A-175
Kennewick, WA 99336

Re: The Horse Heaven Hills Wind and Solar Project

Attention Board of Directors:

The Lower Columbia Basin Audubon Society (LCBAS) of the Tri-Cities is an organization that advocates wise stewardship of the land which includes protection of native habitat and the birds, plants and animals that are supported by that habitat. The Horse Heaven Hills project area contains disappearing native habitat that needs to be conserved along with the birds and animals that rely on that habitat for subsistence and protection. The area, mostly the ravines, and adjacent areas are migratory corridors that are critical for species vigor and vitality. It is critical that the siting of wind turbines and solar fields be located so as not to impact critical habitat and migratory corridors.

LCBAS supports community representation by Tri-Cities C.A.R.E.S. In discussions with C.A.R.E.S.'s representatives, many of the concerns about the siting of wind turbines and solar fields parallels LCBAS's concerns. LCBAS along with C.A.R.E.S. is extremely concerned about Ferruginous Hawks and wildlife corridors.

The Ferruginous Hawk is fast disappearing in Washington State as well as the Pacific Northwest. Historic records and recent observations indicate that the hawk traditionally used, and is still present, in the Horse Heaven Hills. It is the recommendation of LCBAS that access roads and wind turbines should not be sited within a **two mile radius** of active and traditional Ferruginous Hawk nesting sites. This distance may appear to be conservative but the extreme sensitivity of this hawk to human intrusions warrants this protective distance.

Native habitat and migratory corridors are extremely important for the health of native birds, animals and plants in the Horse Heaven Hills. Construction of wind turbines and solar fields as well as the customary support utilities must be placed away from migratory corridors and should not impact native habitat.

Mitigation is an action that both C.A.R.E.S. and LCBAS agree needs to be fully enacted. In destruction of native habitat a ratio of 5:1 is appropriate to offset what has been lost. Mitigation must be conducted in the Horse Heaven Hills ecoregion to be fully responsive to what has been lost to construction. Mitigation

EDUCATION

• CONSERVATION

• APPRECIATION

Recipient of the Chevron Times Mirror Award, 1996

can also be in different forms such as monetary compensation or funding to organizations or institutions that study impacts to raptors such as Ferruginous Hawks or eagles from wind turbines.

LCBAS supports C.A.R.E.S. role as a local intervenor in the adjudication process.

Sincerely,



Dana C. Ward
Conservation Chair, LCBAS

June 7, 2023

Tri-Cities CARES
1360 N Louisiana St #A-175
Kennewick, WA 99336

Dear Board:

On behalf of the over 1200 members of the TriCity Association of Realtors, I'm writing to express our support of Tri-Cities CARES active role in opposing the Horse Heaven Hills Wind Farm project.

Our organization advocates for pro-housing legislation in the TriCities area. In addition to housing issues, we are also champions of property rights for all homeowners.

This is a controversial project, with much opposition including Benton PUD, various environmental groups, and the Yakima Nation. We believe it is our duty to stand alongside these numerous groups as a dissenting voice to this wholly disadvantageous proposal. The harm to the property rights, viewsheds, and future planning for local housing are far too detrimental to our profession and those we advocate for. Although there are countless reasons to not move forward with this project, these 4 points highlight the most glaring opposition:

1. In 2019, Hydro power created over 30,500 megawatts of power, and wind pales in comparison.
2. Regarding the Endangered Species Act (ESA) of 1973, wind poses a threat to native birds in our region.
3. Agriculturally, wind can create direct effects on local temperatures that can detrimentally affect our regions output of food and other necessary resources.
4. An alternate location where the Windmills could be housed is at the Hanford Site. The location has become an Epicenter for Energy Creation; Nuclear, Small modular Reactors, Solar, etc.

We will firmly support Benton County and all other local jurisdictions and special interest groups in strict opposition to Scout Clean Energy's intent to compromise and exploit our homes and local resources.

We will make ourselves and our resources available in any way that we might help inform, encourage, and engage the community and our members to help bring this project to a halt.

We thank each of you for your time and effort combating this egregious attack on our local homes.

Respectfully,

TRICITY ASSOCIATION OF REALTORS

Lola Franklin, CAE
Chief Executive Officer