

APPENDIX Q: VISUAL SIMULATIONS (REVISED)

Existing Conditions



Project Simulation Option 1

244 WTG



Project Simulation Option 2

150 WTG



Horse Heaven
Wind Project



Figure 1
Representative Viewpoint 1
Existing Conditions
and Project Simulations

BENTON COUNTY, WA



Viewpoint Location and
Photo Direction



Project Lease Boundary



Proposed Turbine Location



Proposed Substation/BESS



Proposed Transmission Line

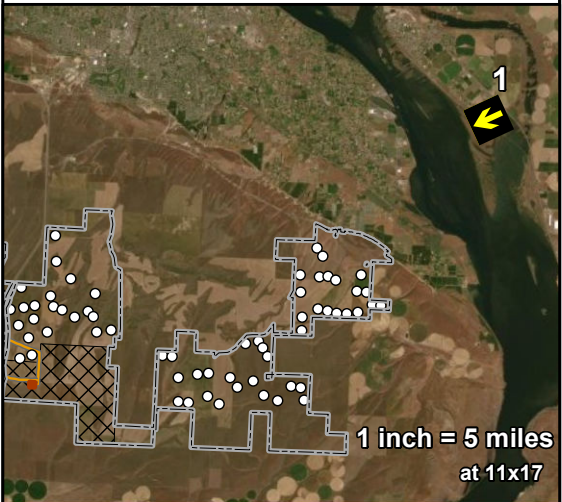


Solar Siting Area

| | |
|--------------------------------------|-------------|
| View direction (deg): | 244 |
| Horizontal field of view (deg):..... | 75 |
| Vertical field of view (deg):..... | 20 |
| Max. WTGs within field of view:... | 244 / 150 |
| Max. Visible WTGs at tip height:.. | 199 / 137 |
| Max. Visible WTGs at hub height: | 148 / 107 |
| Closest WTG (mi):..... | 5.2 / 5.8 |
| Furthest WTG (mi):..... | 26.8 / 26.5 |
| Closest Solar Array (mi):..... | No view |
| Closest Transmission Line (mi):..... | No view |
| Closest Substation / BESS (mi):... | No view |

To approximate how the project will appear to a viewer in the natural setting, this sheet should be printed at 11 x 17 inches, full size with no scaling, and viewed at 6 inches from the eye. If viewed on a computer monitor, the document should be scaled at 100% and viewed at 6 inches from the eye.

NOT FOR CONSTRUCTION



Existing Conditions



Project Simulation Option 1

244 WTG



Project Simulation Option 2

150 WTG



Horse Heaven
Wind Project



Figure 2
Representative Viewpoint 2a
Existing Conditions
and Project Simulations

BENTON COUNTY, WA



Viewpoint Location and
Photo Direction



Project Lease Boundary



Proposed Turbine Location



Proposed Substation/BESS



Proposed Transmission Line

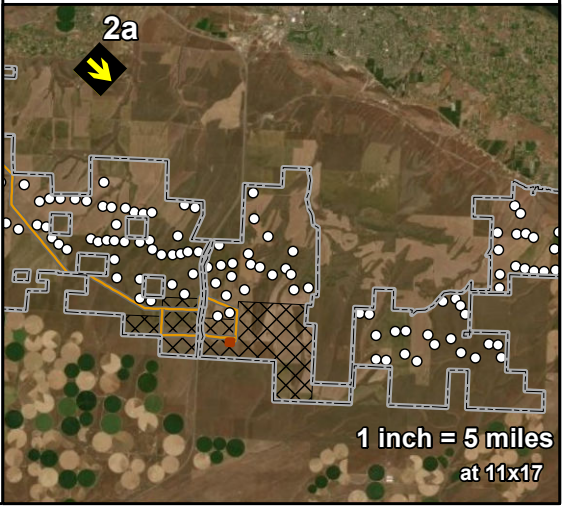


Solar Siting Area

| | |
|--------------------------------------|-----------|
| View direction (deg): | 132 |
| Horizontal field of view (deg):..... | 57 |
| Vertical field of view (deg):..... | 15 |
| Max. WTGs within field of view:... | 75 / 38 |
| Max. Visible WTGs at tip height:... | 56 / 29 |
| Max. Visible WTGs at hub height: | 50 / 24 |
| Closest WTG (mi):..... | 3.9 / 4.8 |
| Furthest WTG (mi):..... | 13.4 / 13 |
| Closest Solar Array (mi):..... | No view |
| Closest Transmission Line (mi):..... | No view |
| Closest Substation / BESS (mi):... | No view |

To approximate how the project will appear to a viewer in the natural setting, this sheet should be printed at 11 x 17 inches, full size with no scaling, and viewed at 8 inches from the eye. If viewed on a computer monitor, the document should be scaled at 100% and viewed at 8 inches from the eye.

NOT FOR CONSTRUCTION



Existing Conditions



Project Simulation Option 1
244 WTG



Project Simulation Option 2
150 WTG



Horse Heaven
Wind Project



Figure 3
Representative Viewpoint 2b
Existing Conditions
and Project Simulations

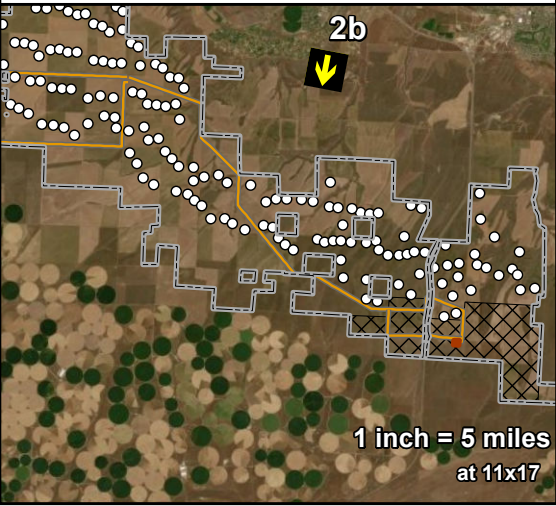
BENTON COUNTY, WA

- Viewpoint Location and Photo Direction
- Project Lease Boundary
- Proposed Turbine Location
- Proposed Substation/BESS
- Proposed Transmission Line
- Solar Siting Area

| | |
|--------------------------------------|-----------|
| View direction (deg): | 189 |
| Horizontal field of view (deg):..... | 57 |
| Vertical field of view (deg):..... | 15 |
| Max. WTGs within field of view:... | 37 / 19 |
| Max. Visible WTGs at tip height:.. | 36 / 19 |
| Max. Visible WTGs at hub height: | 30 / 17 |
| Closest WTG (mi):..... | 3 / 3.5 |
| Furthest WTG (mi):..... | 6.2 / 5.9 |
| Closest Solar Array (mi):..... | No view |
| Closest Transmission Line (mi):..... | No view |
| Closest Substation / BESS (mi):... | No view |

To approximate how the project will appear to a viewer in the natural setting, this sheet should be printed at 11 x 17 inches, full size with no scaling, and viewed at 8 inches from the eye. If viewed on a computer monitor, the document should be scaled at 100% and viewed at 8 inches from the eye.

NOT FOR CONSTRUCTION



Existing Conditions



Project Simulation Option 1
244 WTG



Project Simulation Option 2
150 WTG








Horse Heaven
Wind Project



Figure 4
Representative Viewpoint 2c
Existing Conditions
and Project Simulations

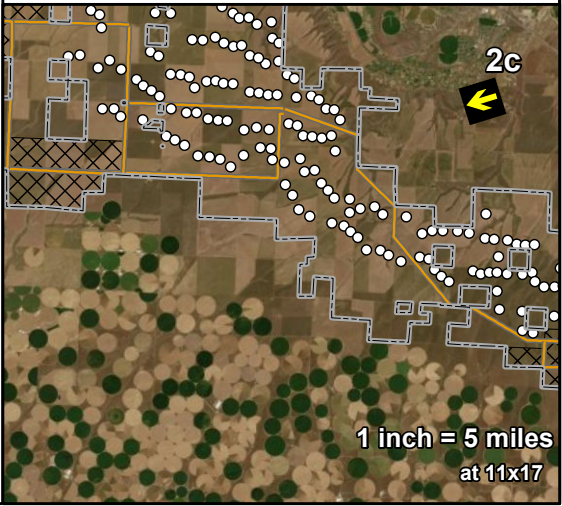
BENTON COUNTY, WA

-  Viewpoint Location and Photo Direction
-  Project Lease Boundary
 -  Proposed Turbine Location
-  Proposed Transmission Line
-  Solar Siting Area

| | |
|--------------------------------------|-------------|
| View direction (deg): | 251 |
| Horizontal field of view (deg):..... | 56 |
| Vertical field of view (deg):..... | 15 |
| Max. WTGs within field of view:... | 85 / 60 |
| Max. Visible WTGs at tip height:.. | 46 / 39 |
| Max. Visible WTGs at hub height: | 24 / 21 |
| Closest WTG (mi):..... | 3.7 / 3.7 |
| Furthest WTG (mi):..... | 10.8 / 10.8 |
| Closest Solar Array (mi):..... | No view |
| Closest Transmission Line (mi):..... | 3.4 |
| Closest Substation / BESS (mi):... | No view |

To approximate how the project will appear to a viewer in the natural setting, this sheet should be printed at 11 x 17 inches, full size with no scaling, and viewed at 8 inches from the eye. If viewed on a computer monitor, the document should be scaled at 100% and viewed at 8 inches from the eye.

NOT FOR CONSTRUCTION



Existing Conditions



Project Simulation Option 1
244 WTG



Project Simulation Option 2
150 WTG



Horse Heaven
Wind Project



Figure 5
Representative Viewpoint 3
Existing Conditions
and Project Simulations

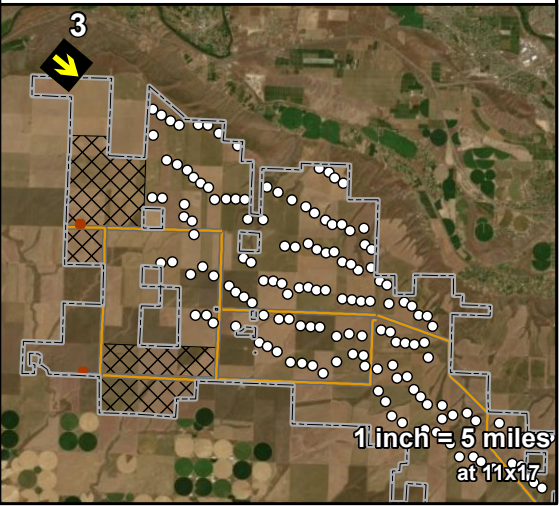
BENTON COUNTY, WA

- Viewpoint Location and Photo Direction
- Project Lease Boundary
 - Proposed Turbine Location
- Proposed Substation/BESS
- Proposed Transmission Line
- Solar Siting Area

| | |
|--------------------------------------|--------------|
| View direction (deg): | 128 |
| Horizontal field of view (deg):..... | 56 |
| Vertical field of view (deg):..... | 15 |
| Max. WTGs within field of view:... | 244 / 150 |
| Max. Visible WTGs at tip height:.. | 239 / 150 |
| Max. Visible WTGs at hub height: | 219 / 139 |
| Closest WTG (mi):..... | 2.5 / 2.8 |
| Furthest WTG (mi):..... | 28.1 / 27.6 |
| Closest Solar Array (mi):..... | 2.1 |
| Closest Transmission Line (mi):..... | 4.2 |
| Closest Substation / BESS (mi):.. | Not in frame |

To approximate how the project will appear to a viewer in the natural setting, this sheet should be printed at 11 x 17 inches, full size with no scaling, and viewed at 8 inches from the eye. If viewed on a computer monitor, the document should be scaled at 100% and viewed at 8 inches from the eye.

NOT FOR CONSTRUCTION



Existing Conditions



Project Simulation Option 1

244 WTG



Project Simulation Option 2

150 WTG



Horse Heaven
Wind Project



Figure 6
Representative Viewpoint 4a
Existing Conditions
and Project Simulations

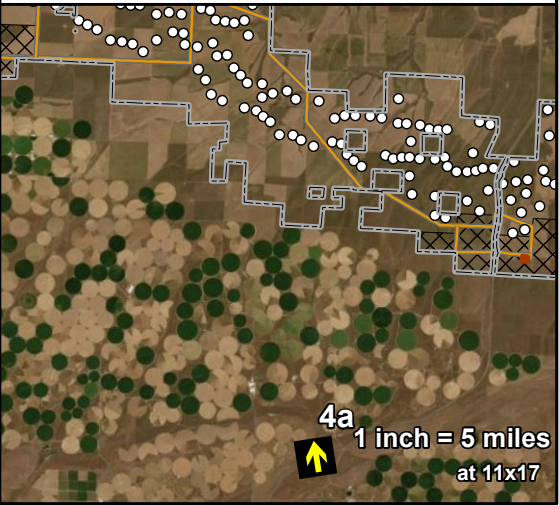
BENTON COUNTY, WA

- Viewpoint Location and Photo Direction
- Project Lease Boundary
 - Proposed Turbine Location
- Proposed Substation/BESS
- Proposed Transmission Line
- Solar Siting Area

| | |
|--------------------------------------|--------------|
| View direction (deg): | 350 |
| Horizontal field of view (deg):..... | 57 |
| Vertical field of view (deg):..... | 15 |
| Max. WTGs within field of view:... | 163 / 110 |
| Max. Visible WTGs at tip height:.. | 51 / 40 |
| Max. Visible WTGs at hub height: | 34 / 26 |
| Closest WTG (mi):..... | 7.3 / 7.3 |
| Furthest WTG (mi):..... | 19.6 / 19.4 |
| Closest Solar Array (mi):..... | Not in frame |
| Closest Transmission Line (mi):..... | 6.5 |
| Closest Substation / BESS (mi):.. | Not in frame |

To approximate how the project will appear to a viewer in the natural setting, this sheet should be printed at 11 x 17 inches, full size with no scaling, and viewed at 8 inches from the eye. If viewed on a computer monitor, the document should be scaled at 100% and viewed at 8 inches from the eye.

NOT FOR CONSTRUCTION



R:\PROJECTS\HORSE HEAVEN 6430\VIEWSHED\MAPS\VISUAL SIMULATION PHOTOS 20211006.mxd

Existing Conditions



Project Simulation Option 1

244 WTG



Project Simulation Option 2

150 WTG



Horse Heaven
Wind Project



Figure 7
Representative Viewpoint 4b
Existing Conditions
and Project Simulations

BENTON COUNTY, WA



Viewpoint Location and
Photo Direction



Project Lease Boundary



Proposed Turbine Location



Proposed Substation/BESS



Proposed Transmission Line

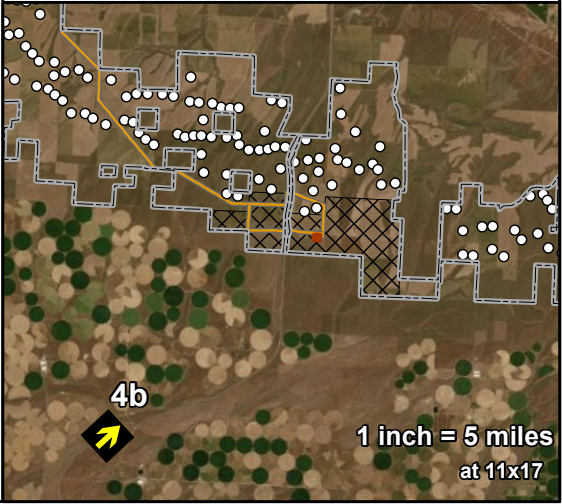


Solar Siting Area

| | |
|--------------------------------------|-------------|
| View direction (deg): | 46 |
| Horizontal field of view (deg):..... | 57 |
| Vertical field of view (deg):..... | 15 |
| Max. WTGs within field of view:... | 85 / 42 |
| Max. Visible WTGs at tip height:.. | 66 / 37 |
| Max. Visible WTGs at hub height: | 58 / 33 |
| Closest WTG (mi):..... | 7 / 7.3 |
| Furthest WTG (mi):..... | 16.2 / 15.6 |
| Closest Solar Array (mi):..... | 6.0 |
| Closest Transmission Line (mi):..... | 6.5 |
| Closest Substation / BESS (mi):.. | 7.3 |

To approximate how the project will appear to a viewer in the natural setting, this sheet should be printed at 11 x 17 inches, full size with no scaling, and viewed at 8 inches from the eye. If viewed on a computer monitor, the document should be scaled at 100% and viewed at 8 inches from the eye.

NOT FOR CONSTRUCTION



Existing Conditions



Project Simulation Option 1
244 WTG



Project Simulation Option 2
150 WTG



Horse Heaven
Wind Project



Figure 8
Representative Viewpoint 5
Existing Conditions
and Project Simulations

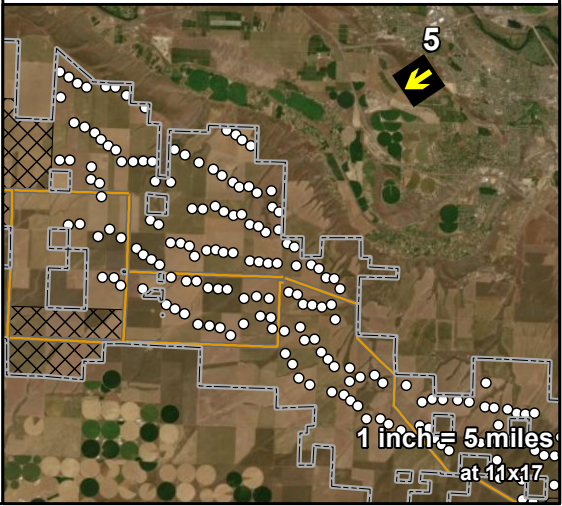
BENTON COUNTY, WA

- Viewpoint Location and Photo Direction
- Project Lease Boundary
- Proposed Turbine Location
- Proposed Transmission Line
- Solar Siting Area

| | |
|--------------------------------------|-----------|
| View direction (deg): | 236 |
| Horizontal field of view (deg):..... | 58 |
| Vertical field of view (deg):..... | 15 |
| Max. WTGs within field of view:... | 101 / 76 |
| Max. Visible WTGs at tip height:.. | 101 / 76 |
| Max. Visible WTGs at hub height: | 101 / 76 |
| Closest WTG (mi):..... | 4.7 / 4.7 |
| Furthest WTG (mi):..... | 9.9 / 9.8 |
| Closest Solar Array (mi):..... | No view |
| Closest Transmission Line (mi):..... | No view |
| Closest Substation / BESS (mi):... | No view |

To approximate how the project will appear to a viewer in the natural setting, this sheet should be printed at 11 x 17 inches, full size with no scaling, and viewed at 8 inches from the eye. If viewed on a computer monitor, the document should be scaled at 100% and viewed at 8 inches from the eye.

NOT FOR CONSTRUCTION



R:\PROJECTS\HORSE HEAVEN 6430\VIEWSHED\MAPS\VISUAL SIMULATION PHOTOS 2021\1006.mxd

Existing Conditions



Project Simulation Option 1

244 WTG



Project Simulation Option 2

150 WTG



Horse Heaven
Wind Project



Figure 9
Representative Viewpoint 6
Existing Conditions
and Project Simulations

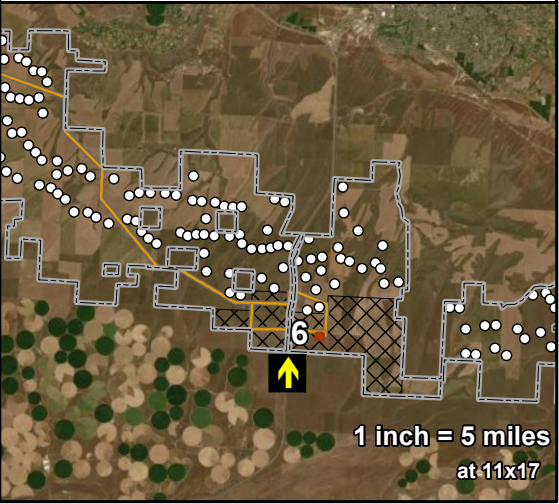
BENTON COUNTY, WA

- Viewpoint Location and Photo Direction
- Project Lease Boundary
- Proposed Turbine Location
- Proposed Substation/BESS
- Proposed Transmission Line
- Solar Siting Area

| | |
|--------------------------------------|--------------|
| View direction (deg): | 360 |
| Horizontal field of view (deg):..... | 60 |
| Vertical field of view (deg):..... | 15 |
| Max. WTGs within field of view:... | 41 / 17 |
| Max. Visible WTGs at tip height:.. | 37 / 17 |
| Max. Visible WTGs at hub height: | 29 / 17 |
| Closest WTG (mi):..... | 1.7 / 1.8 |
| Furthest WTG (mi):..... | 5.7 / 5 |
| Closest Solar Array (mi):..... | 0.6 |
| Closest Transmission Line (mi):..... | 1.2 |
| Closest Substation / BESS (mi):.. | Not in frame |

To approximate how the project will appear to a viewer in the natural setting, this sheet should be printed at 11 x 17 inches, full size with no scaling, and viewed at 8 inches from the eye. If viewed on a computer monitor, the document should be scaled at 100% and viewed at 8 inches from the eye.

NOT FOR CONSTRUCTION



Existing Conditions



Project Simulation Option 1
244 WTG



Project Simulation Option 2
150 WTG



Horse Heaven
Wind Project



Figure 10
Representative Viewpoint 7
Existing Conditions
and Project Simulations

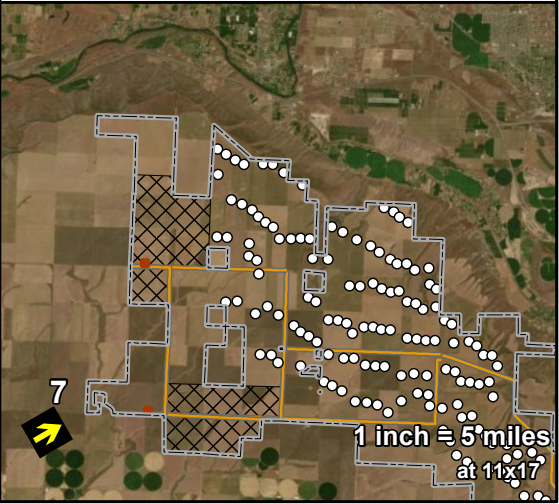
BENTON COUNTY, WA

- Viewpoint Location and Photo Direction
- Project Lease Boundary
- Proposed Turbine Location
- Proposed Substation/BESS
- Proposed Transmission Line
- Solar Siting Area

| | |
|--------------------------------------|-------------|
| View direction (deg): | 60 |
| Horizontal field of view (deg):..... | 58 |
| Vertical field of view (deg):..... | 15 |
| Max. WTGs within field of view:... | 122 / 90 |
| Max. Visible WTGs at tip height:.. | 118 / 87 |
| Max. Visible WTGs at hub height: | 110 / 85 |
| Closest WTG (mi):..... | 5.8 / 5.8 |
| Furthest WTG (mi):..... | 11.9 / 11.8 |
| Closest Solar Array (mi):..... | 3.1 |
| Closest Transmission Line (mi):..... | 2.2 |
| Closest Substation / BESS (mi):... | No view |

To approximate how the project will appear to a viewer in the natural setting, this sheet should be printed at 11 x 17 inches, full size with no scaling, and viewed at 8 inches from the eye. If viewed on a computer monitor, the document should be scaled at 100% and viewed at 8 inches from the eye.

NOT FOR CONSTRUCTION



R:\PROJECTS\HORSE HEAVEN 6430\VIEWSHED\MAPS\VISUAL SIMULATION PHOTOS 20211006.mxd

Existing Conditions



Project Simulation Option 1
244 WTG



Project Simulation Option 2
150 WTG



Horse Heaven
Wind Project



Figure 11
Representative Viewpoint 8a
Existing Conditions
and Project Simulations

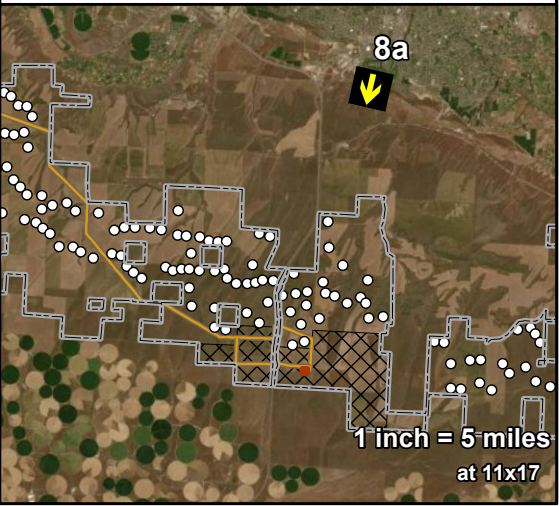
BENTON COUNTY, WA

- Viewpoint Location and Photo Direction
- Project Lease Boundary
- Proposed Turbine Location
- Proposed Substation/BESS
- Proposed Transmission Line
- Solar Siting Area

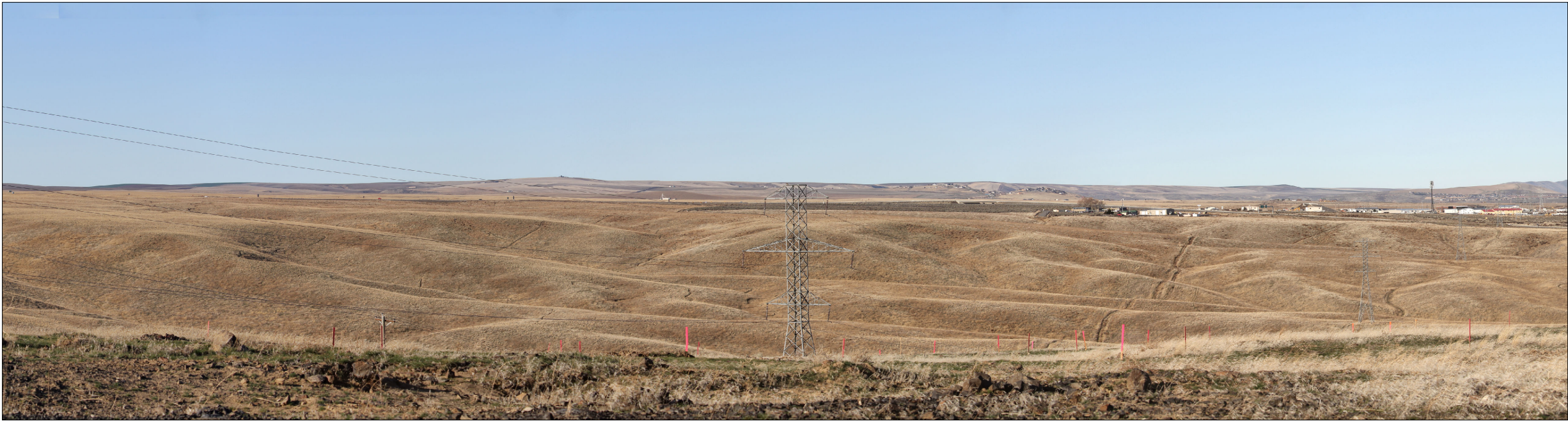
| | |
|--------------------------------------|-----------|
| View direction (deg): | 193 |
| Horizontal field of view (deg):..... | 57 |
| Vertical field of view (deg):..... | 15 |
| Max. WTGs within field of view:... | 43 / 20 |
| Max. Visible WTGs at tip height:.. | 40 / 19 |
| Max. Visible WTGs at hub height: | 37 / 15 |
| Closest WTG (mi):..... | 3.6 / 5.4 |
| Furthest WTG (mi):..... | 7.4 / 7.3 |
| Closest Solar Array (mi):..... | No view |
| Closest Transmission Line (mi):..... | No view |
| Closest Substation / BESS (mi):... | No view |

To approximate how the project will appear to a viewer in the natural setting, this sheet should be printed at 11 x 17 inches, full size with no scaling, and viewed at 8 inches from the eye. If viewed on a computer monitor, the document should be scaled at 100% and viewed at 8 inches from the eye.

NOT FOR CONSTRUCTION

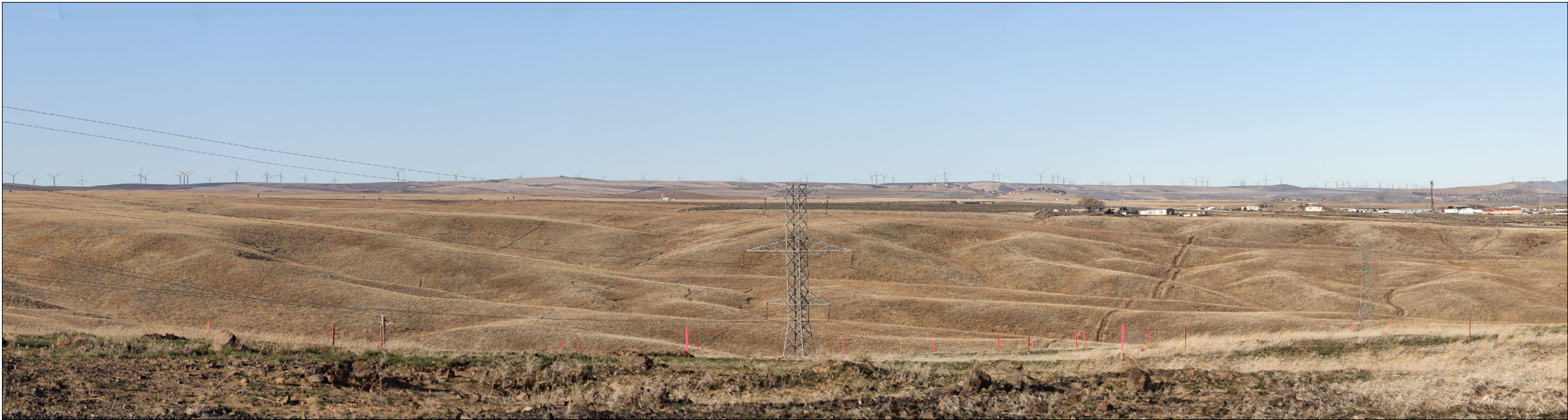


Existing Conditions



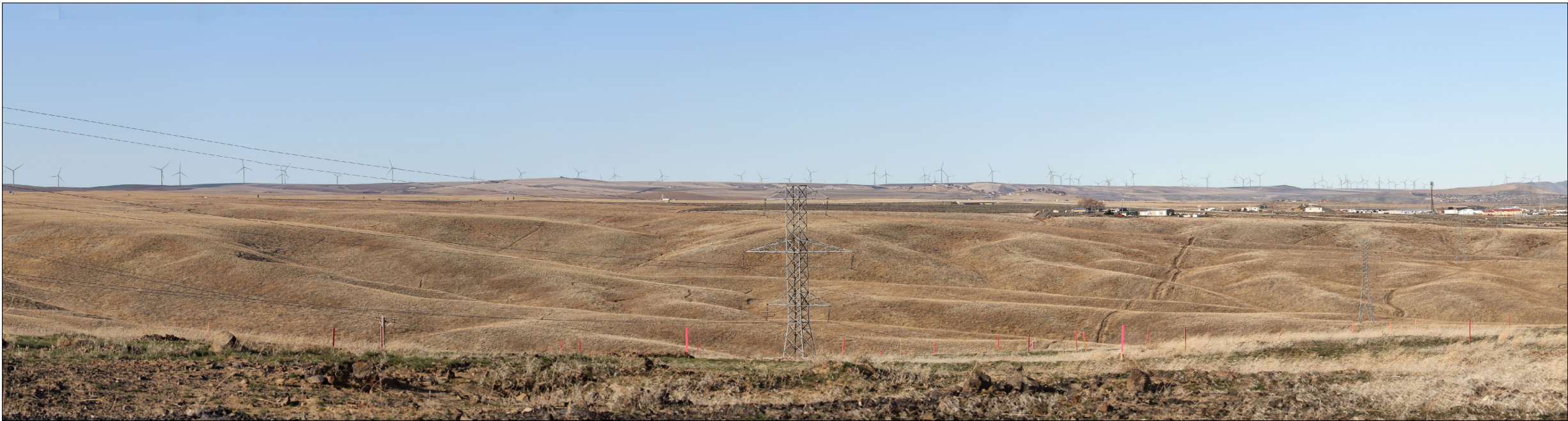
Project Simulation Option 1

244 WTG



Project Simulation Option 2

150 WTG



Horse Heaven
Wind Project



Figure 12
Representative Viewpoint 8b
Existing Conditions
and Project Simulations

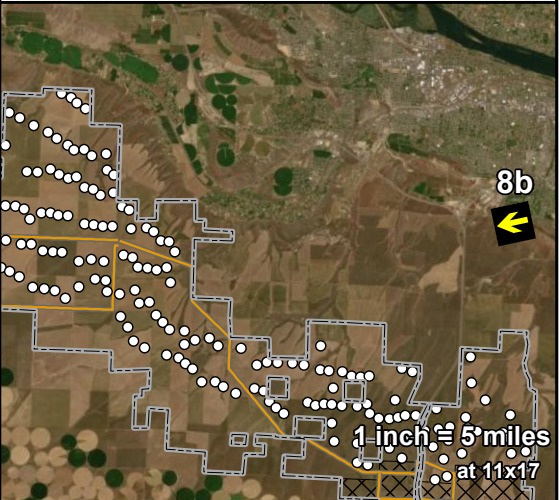
BENTON COUNTY, WA

- Viewpoint Location and Photo Direction
- Project Lease Boundary
 - Proposed Turbine Location
 - Proposed Transmission Line
 - Solar Siting Area

| | |
|--------------------------------------|-------------|
| View direction (deg): | 258 |
| Horizontal field of view (deg):..... | 57 |
| Vertical field of view (deg):..... | 15 |
| Max. WTGs within field of view:... | 153 / 105 |
| Max. Visible WTGs at tip height:... | 137 / 101 |
| Max. Visible WTGs at hub height: | 102 / 83 |
| Closest WTG (mi):..... | 5.9 / 6.1 |
| Furthest WTG (mi):..... | 16.8 / 16.6 |
| Closest Solar Array (mi):..... | No view |
| Closest Transmission Line (mi):..... | No view |
| Closest Substation / BESS (mi):... | No view |

To approximate how the project will appear to a viewer in the natural setting, this sheet should be printed at 11 x 17 inches, full size with no scaling, and viewed at 8 inches from the eye. If viewed on a computer monitor, the document should be scaled at 100% and viewed at 8 inches from the eye.

NOT FOR CONSTRUCTION



Existing Conditions



Project Simulation Option 1

244 WTG



Project Simulation Option 2

150 WTG



Horse Heaven
Wind Project



Figure 13
Representative Viewpoint 9
Existing Conditions
and Project Simulations

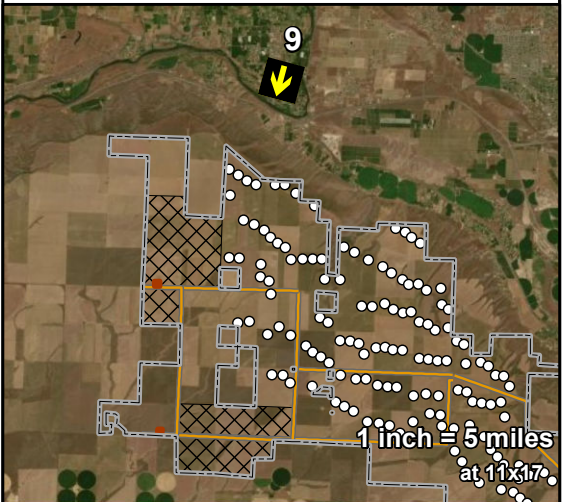
BENTON COUNTY, WA

- Viewpoint Location and Photo Direction
- Project Lease Boundary
 - Proposed Turbine Location
 - Proposed Substation/BESS
 - Proposed Transmission Line
 - Solar Siting Area

| | |
|--------------------------------------|-----------|
| View direction (deg): | 195 |
| Horizontal field of view (deg):..... | 73 |
| Vertical field of view (deg):..... | 19 |
| Max. WTGs within field of view:... | 61 / 47 |
| Max. Visible WTGs at tip height:.. | 5 / 5 |
| Max. Visible WTGs at hub height: | 4 / 4 |
| Closest WTG (mi):..... | 2.7 / 2.7 |
| Furthest WTG (mi):..... | 9.7 / 9.6 |
| Closest Solar Array (mi):..... | No view |
| Closest Transmission Line (mi):..... | No view |
| Closest Substation / BESS (mi):... | No view |

To approximate how the project will appear to a viewer in the natural setting, this sheet should be printed at 11 x 17 inches, full size with no scaling, and viewed at 6 inches from the eye. If viewed on a computer monitor, the document should be scaled at 100% and viewed at 6 inches from the eye.

NOT FOR CONSTRUCTION



Existing Conditions



Project Simulation Option 1

244 WTG



Project Simulation Option 2

150 WTG



Horse Heaven
Wind Project



Figure 14
Representative Viewpoint 10
Existing Conditions
and Project Simulations

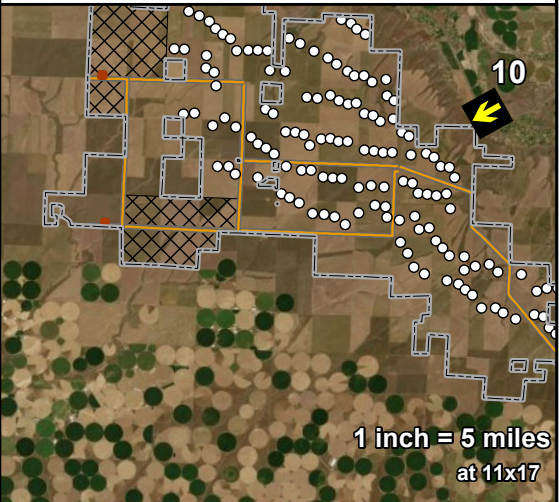
BENTON COUNTY, WA

- Viewpoint Location and Photo Direction
- Project Lease Boundary
- Proposed Turbine Location
- Proposed Substation/BESS
- Proposed Transmission Line
- Solar Siting Area

| | |
|--------------------------------------|-----------|
| View direction (deg): | 241 |
| Horizontal field of view (deg):..... | 76 |
| Vertical field of view (deg):..... | 20 |
| Max. WTGs within field of view:... | 79 / 59 |
| Max. Visible WTGs at tip height:.. | 15 / 15 |
| Max. Visible WTGs at hub height: | 9 / 7 |
| Closest WTG (mi):..... | 1.5 / 1.5 |
| Furthest WTG (mi):..... | 6.6 / 6.6 |
| Closest Solar Array (mi):..... | No view |
| Closest Transmission Line (mi):..... | No view |
| Closest Substation / BESS (mi):... | No view |

To approximate how the project will appear to a viewer in the natural setting, this sheet should be printed at 11 x 17 inches, full size with no scaling, and viewed at 6 inches from the eye. If viewed on a computer monitor, the document should be scaled at 100% and viewed at 6 inches from the eye.

NOT FOR CONSTRUCTION



R:\PROJECTS\HORSE HEAVEN 6430\VIEWSHED\MAPS\VISUAL SIMULATION PHOTOS 2021\1006.mxd

Existing Conditions



Project Simulation Option 1
244 WTG



Project Simulation Option 2
150 WTG



Horse Heaven
Wind Project



Figure 15
Representative Viewpoint 11
Existing Conditions
and Project Simulations

BENTON COUNTY, WA



Viewpoint Location and
Photo Direction



Project Lease Boundary



Proposed Turbine Location

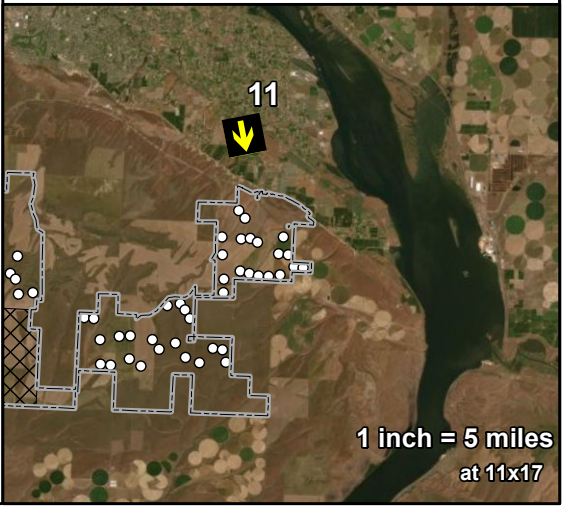


Solar Siting Area

| | |
|--------------------------------------|-----------|
| View direction (deg): | 169 |
| Horizontal field of view (deg):..... | 73 |
| Vertical field of view (deg):..... | 19 |
| Max. WTGs within field of view:... | 33 / 47 |
| Max. Visible WTGs at tip height:.. | 23 / 12 |
| Max. Visible WTGs at hub height: | 19 / 11 |
| Closest WTG (mi):..... | 2 / 2.5 |
| Furthest WTG (mi):..... | 6.6 / 6.6 |
| Closest Solar Array (mi):..... | No view |
| Closest Transmission Line (mi):..... | No view |
| Closest Substation / BESS (mi):... | No view |

To approximate how the project will appear to a viewer in the natural setting, this sheet should be printed at 11 x 17 inches, full size with no scaling, and viewed at 6 inches from the eye. If viewed on a computer monitor, the document should be scaled at 100% and viewed at 6 inches from the eye.

NOT FOR CONSTRUCTION



R:\PROJECTS\HORSE HEAVEN 6430\VIEWSHED\MAPS\VISUAL SIMULATION PHOTOS 20211006.mxd

Existing Conditions



Project Simulation Option 1
244 WTG



Project Simulation Option 2
150 WTG



Horse Heaven
Wind Project



Figure 16
Representative Viewpoint 12
Existing Conditions
and Project Simulations

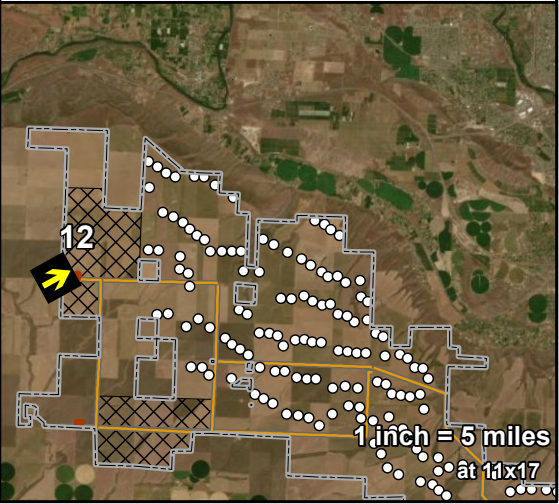
BENTON COUNTY, WA

- Viewpoint Location and Photo Direction
- Project Lease Boundary
 - Proposed Turbine Location
- Proposed Substation/BESS
- Proposed Transmission Line
- Solar Siting Area

| | |
|--------------------------------------|-----------|
| View direction (deg): | 61 |
| Horizontal field of view (deg):..... | 73 |
| Vertical field of view (deg):..... | 19 |
| Max. WTGs within field of view:... | 57 / 40 |
| Max. Visible WTGs at tip height:.. | 53 / 40 |
| Max. Visible WTGs at hub height: | 52 / 37 |
| Closest WTG (mi):..... | 2.5 / 2.5 |
| Furthest WTG (mi):..... | 8.7 / 8.6 |
| Closest Solar Array (mi):..... | 0.2 |
| Closest Transmission Line (mi):..... | 0.2 |
| Closest Substation / BESS (mi):... | 0.5 |

To approximate how the project will appear to a viewer in the natural setting, this sheet should be printed at 11 x 17 inches, full size with no scaling, and viewed at 6 inches from the eye. If viewed on a computer monitor, the document should be scaled at 100% and viewed at 6 inches from the eye.

NOT FOR CONSTRUCTION



Existing Conditions



Project Simulation Option 1

244 WTG



Project Simulation Option 2

150 WTG



Horse Heaven
Wind Project



Figure 17
Representative Viewpoint 13
Existing Conditions
and Project Simulations

BENTON COUNTY, WA

- Viewpoint Location and Photo Direction
- Project Lease Boundary
- Proposed Turbine Location
- Proposed Substation/BESS
- Proposed Transmission Line
- Solar Siting Area

| | |
|--------------------------------------|--------------|
| View direction (deg): | 18 |
| Horizontal field of view (deg):..... | 73 |
| Vertical field of view (deg):..... | 19 |
| Max. WTGs within field of view:... | 73 / 54 |
| Max. Visible WTGs at tip height:.. | 69 / 52 |
| Max. Visible WTGs at hub height: | 65 / 51 |
| Closest WTG (mi):..... | 1.1 / 1.1 |
| Furthest WTG (mi):..... | 7.3 / 7.1 |
| Closest Solar Array (mi):..... | Not in frame |
| Closest Transmission Line (mi):..... | 0.2 |
| Closest Substation / BESS (mi):... | No view |

To approximate how the project will appear to a viewer in the natural setting, this sheet should be printed at 11 x 17 inches, full size with no scaling, and viewed at 6 inches from the eye. If viewed on a computer monitor, the document should be scaled at 100% and viewed at 6 inches from the eye.

NOT FOR CONSTRUCTION

