

APPENDIX Q: VISUAL SIMULATIONS (REVISED)

R:\PROJECTS\HORSE HEAVEN 6430\VIEWSHED\MAPS\VISUAL SIMULATION PHOTOS 20211006.mxd

Existing Conditions



Project Simulation Option 1

244 WTG



Project Simulation Option 2

150 WTG



Horse Heaven
Wind Project



Figure 1
Representative Viewpoint 1
Existing Conditions
and Project Simulations

BENTON COUNTY, WA



Viewpoint Location and
Photo Direction



Project Lease Boundary



Proposed Turbine Location



Proposed Substation/BESS



Proposed Transmission Line

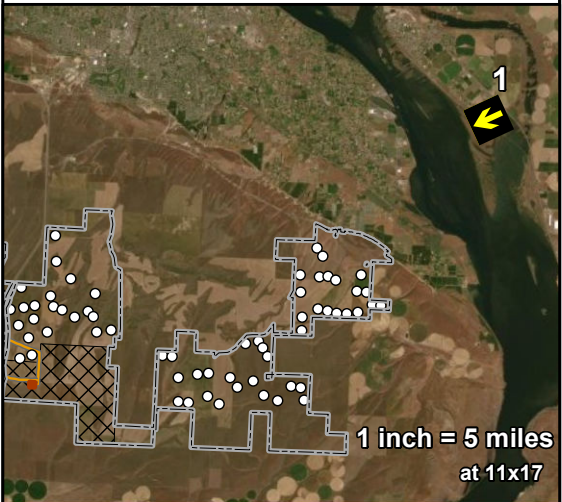


Solar Siting Area

View direction (deg):	244
Horizontal field of view (deg):.....	75
Vertical field of view (deg):.....	20
Max. WTGs within field of view:...	244 / 150
Max. Visible WTGs at tip height:..	199 / 137
Max. Visible WTGs at hub height:	148 / 107
Closest WTG (mi):.....	5.2 / 5.8
Furthest WTG (mi):.....	26.8 / 26.5
Closest Solar Array (mi):.....	No view
Closest Transmission Line (mi):.....	No view
Closest Substation / BESS (mi):...	No view

To approximate how the project will appear to a viewer in the natural setting, this sheet should be printed at 11 x 17 inches, full size with no scaling, and viewed at 6 inches from the eye. If viewed on a computer monitor, the document should be scaled at 100% and viewed at 6 inches from the eye.

NOT FOR CONSTRUCTION



R:\PROJECTS\HORSE HEAVEN 6430\VIEWSHED\MAPS\VISUAL SIMULATION PHOTOS 20211006.mxd

Existing Conditions



Project Simulation Option 1
244 WTG



Project Simulation Option 2
150 WTG



Horse Heaven
Wind Project



Figure 2
Representative Viewpoint 2a
Existing Conditions
and Project Simulations

BENTON COUNTY, WA



Viewpoint Location and
Photo Direction



Project Lease Boundary



Proposed Turbine Location



Proposed Substation/BESS



Proposed Transmission Line

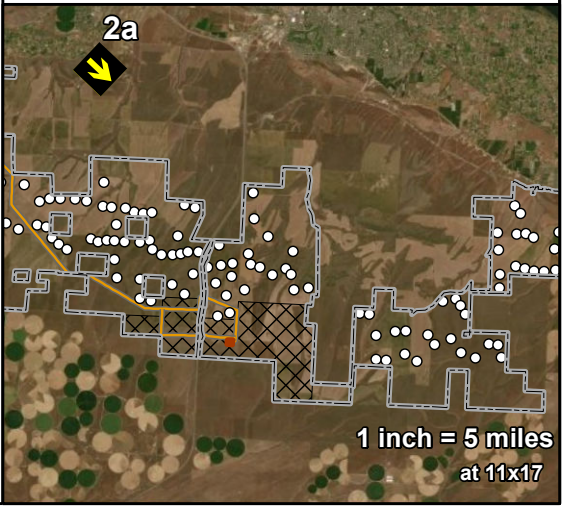


Solar Siting Area

View direction (deg):	132
Horizontal field of view (deg):.....	57
Vertical field of view (deg):.....	15
Max. WTGs within field of view:...	75 / 38
Max. Visible WTGs at tip height:..	56 / 29
Max. Visible WTGs at hub height:	50 / 24
Closest WTG (mi):.....	3.9 / 4.8
Furthest WTG (mi):.....	13.4 / 13
Closest Solar Array (mi):.....	No view
Closest Transmission Line (mi):.....	No view
Closest Substation / BESS (mi):...	No view

To approximate how the project will appear to a viewer in the natural setting, this sheet should be printed at 11 x 17 inches, full size with no scaling, and viewed at 8 inches from the eye. If viewed on a computer monitor, the document should be scaled at 100% and viewed at 8 inches from the eye.

NOT FOR CONSTRUCTION



Existing Conditions



Project Simulation Option 1
244 WTG



Project Simulation Option 2
150 WTG



Horse Heaven
Wind Project



Figure 3
Representative Viewpoint 2b
Existing Conditions
and Project Simulations

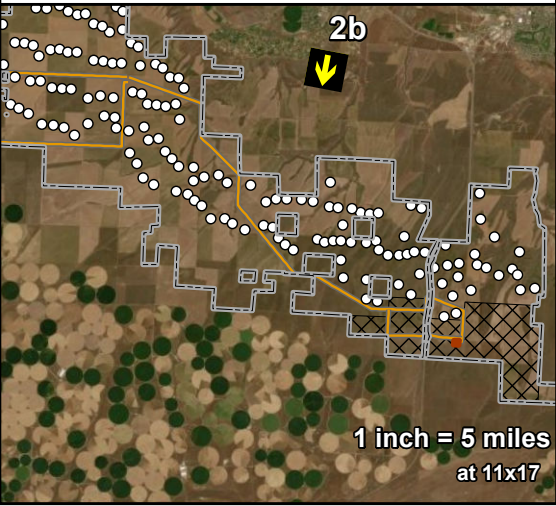
BENTON COUNTY, WA

- Viewpoint Location and Photo Direction
- Project Lease Boundary
- Proposed Turbine Location
- Proposed Substation/BESS
- Proposed Transmission Line
- Solar Siting Area

View direction (deg):	189
Horizontal field of view (deg):.....	57
Vertical field of view (deg):.....	15
Max. WTGs within field of view:...	37 / 19
Max. Visible WTGs at tip height:..	36 / 19
Max. Visible WTGs at hub height:	30 / 17
Closest WTG (mi):.....	3 / 3.5
Furthest WTG (mi):.....	6.2 / 5.9
Closest Solar Array (mi):.....	No view
Closest Transmission Line (mi):.....	No view
Closest Substation / BESS (mi):...	No view

To approximate how the project will appear to a viewer in the natural setting, this sheet should be printed at 11 x 17 inches, full size with no scaling, and viewed at 8 inches from the eye. If viewed on a computer monitor, the document should be scaled at 100% and viewed at 8 inches from the eye.

NOT FOR CONSTRUCTION



Existing Conditions



Project Simulation Option 1

244 WTG



Project Simulation Option 2

150 WTG



Horse Heaven
Wind Project



Figure 4
Representative Viewpoint 2c
Existing Conditions
and Project Simulations

BENTON COUNTY, WA



Viewpoint Location and
Photo Direction



Project Lease Boundary



Proposed Turbine Location



Proposed Transmission Line

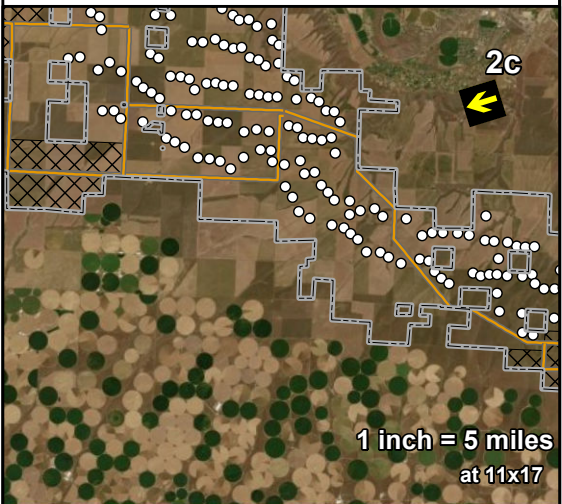


Solar Siting Area

View direction (deg):	251
Horizontal field of view (deg):.....	56
Vertical field of view (deg):.....	15
Max. WTGs within field of view:...	85 / 60
Max. Visible WTGs at tip height:..	46 / 39
Max. Visible WTGs at hub height:	24 / 21
Closest WTG (mi):.....	3.7 / 3.7
Furthest WTG (mi):.....	10.8 / 10.8
Closest Solar Array (mi):.....	No view
Closest Transmission Line (mi):.....	3.4
Closest Substation / BESS (mi):...	No view

To approximate how the project will appear to a viewer in the natural setting, this sheet should be printed at 11 x 17 inches, full size with no scaling, and viewed at 8 inches from the eye. If viewed on a computer monitor, the document should be scaled at 100% and viewed at 8 inches from the eye.

NOT FOR CONSTRUCTION



R:\PROJECTS\HORSE HEAVEN 6430\VIEWSHED\MAPS\VISUAL SIMULATION PHOTOS 20221018\VISUAL SIMULATION PHOTOS 20221018.aprx

As Taken (April 2022)



Sky Replacement and De-hazing



Horse Heaven
Wind Project



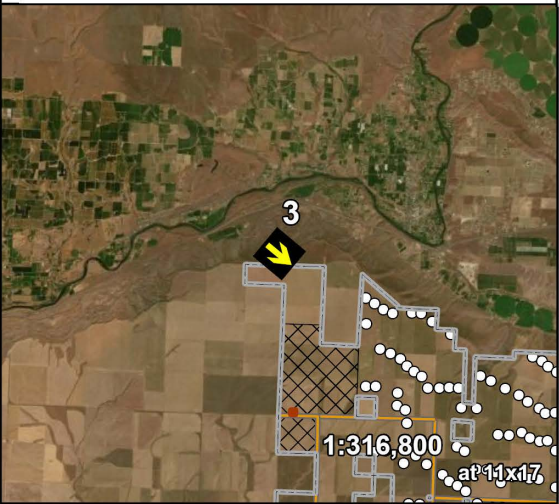
Figure 5-1a
Representative Viewpoint 3
Existing Conditions -
Revised*
BENTON COUNTY, WA

- Viewpoint Location and Photo Direction
- Project Lease Boundary
- Proposed Turbine Location
- Proposed Substation/BESS
- Proposed Transmission Line
- Solar Siting Area

View direction (deg): 128
Horizontal field of view (deg):..... 56
Vertical field of view (deg):..... 15

* Original photos and simulations submitted in 2021
To approximate how the project will appear to a viewer in the natural setting, this sheet should be printed at 11 x 17 inches, full size with no scaling, and viewed at 8 inches from the eye. If viewed on a computer monitor, the document should be scaled at 100% and viewed at 8 inches from the eye.

NOT FOR CONSTRUCTION



Existing Conditions



Project Simulation Option 1
244 WTG



Project Simulation Option 2
150 WTG



Horse Heaven
Wind Project



Figure 5-1b
Representative Viewpoint 3

Existing Conditions and
Project Simulations - Revised*

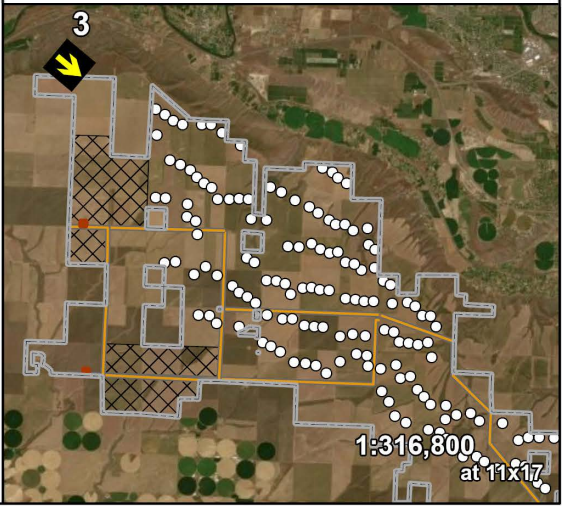
BENTON COUNTY, WA

- Viewpoint Location and Photo Direction
- Project Lease Boundary
 - Proposed Turbine Location
- Proposed Substation/BESS
- Proposed Transmission Line
- Solar Siting Area

View direction (deg):	128
Horizontal field of view (deg):.....	56
Vertical field of view (deg):.....	15
Max. WTGs within field of view:...	244 / 150
Max. Visible WTGs at tip height:..	239 / 150
Max. Visible WTGs at hub height:	219 / 139
Closest WTG (mi):.....	2.5 / 2.8
Furthest WTG (mi):.....	28.1 / 27.6
Closest Solar Array (mi):.....	2.1
Closest Transmission Line (mi):.....	4.2
Closest Substation / BESS (mi):...	Not in frame

* Original photos and simulations submitted in 2021
To approximate how the project will appear to a viewer in the natural setting, this sheet should be printed at 11 x 17 inches, full size with no scaling, and viewed at 8 inches from the eye. If viewed on a computer monitor, the document should be scaled at 100% and viewed at 8 inches from the eye.

NOT FOR CONSTRUCTION



Existing Conditions



Project Simulation Option 1

244 WTG



Project Simulation Option 2

150 WTG



Horse Heaven
Wind Project



Figure 6
Representative Viewpoint 4a
Existing Conditions
and Project Simulations

BENTON COUNTY, WA



Viewpoint Location and
Photo Direction



Project Lease Boundary



Proposed Turbine Location



Proposed Substation/BESS



Proposed Transmission Line



Solar Siting Area

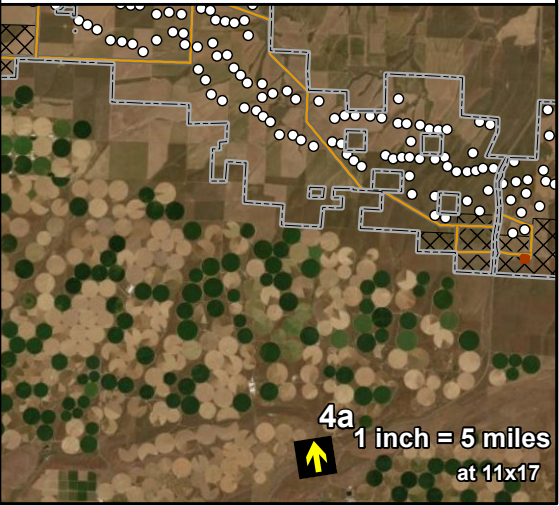
View direction (deg):	350
Horizontal field of view (deg):.....	57
Vertical field of view (deg):.....	15
Max. WTGs within field of view:...	163 / 110
Max. Visible WTGs at tip height:..	51 / 40
Max. Visible WTGs at hub height:	34 / 26
Closest WTG (mi):.....	7.3 / 7.3
Furthest WTG (mi):.....	19.6 / 19.4
Closest Solar Array (mi):.....	Not in frame
Closest Transmission Line (mi):.....	6.5
Closest Substation / BESS (mi):..	Not in frame

To approximate how the project will appear to a viewer in the natural setting, this sheet should be printed at 11 x 17 inches, full size with no scaling, and viewed at 8 inches from the eye. If viewed on a computer monitor, the document should be scaled at 100% and viewed at 8 inches from the eye.

NOT FOR CONSTRUCTION



TETRA TECH



R:\PROJECTS\HORSE HEAVEN 6430\VIEWSHED\MAPS\VISUAL SIMULATION PHOTOS 2021\1006.mxd

Existing Conditions



Project Simulation Option 1

244 WTG



Project Simulation Option 2

150 WTG



Horse Heaven
Wind Project



Figure 7
Representative Viewpoint 4b
Existing Conditions
and Project Simulations

BENTON COUNTY, WA



Viewpoint Location and
Photo Direction



Project Lease Boundary



Proposed Turbine Location



Proposed Substation/BESS



Proposed Transmission Line

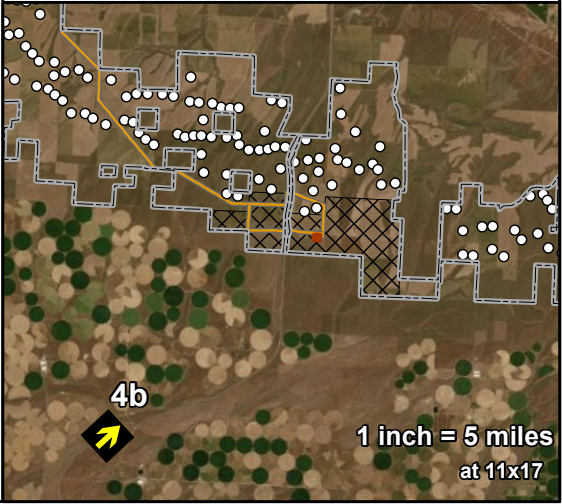


Solar Siting Area

View direction (deg):	46
Horizontal field of view (deg):.....	57
Vertical field of view (deg):.....	15
Max. WTGs within field of view:...	85 / 42
Max. Visible WTGs at tip height:..	66 / 37
Max. Visible WTGs at hub height:	58 / 33
Closest WTG (mi):.....	7 / 7.3
Furthest WTG (mi):.....	16.2 / 15.6
Closest Solar Array (mi):.....	6.0
Closest Transmission Line (mi):.....	6.5
Closest Substation / BESS (mi):..	7.3

To approximate how the project will appear to a viewer in the natural setting, this sheet should be printed at 11 x 17 inches, full size with no scaling, and viewed at 8 inches from the eye. If viewed on a computer monitor, the document should be scaled at 100% and viewed at 8 inches from the eye.

NOT FOR CONSTRUCTION



R:\PROJECTS\HORSE HEAVEN_6430\VIEWSHED\MAPS\VISUAL SIMULATION PHOTOS_20221018\VISUAL SIMULATION PHOTOS_20221018.aprx

As Taken (April 2022)



Sky Replacement and De-hazing



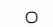



Horse Heaven
Wind Project



Figure 8-1a
Representative Viewpoint 5
Existing Conditions -
Revised*

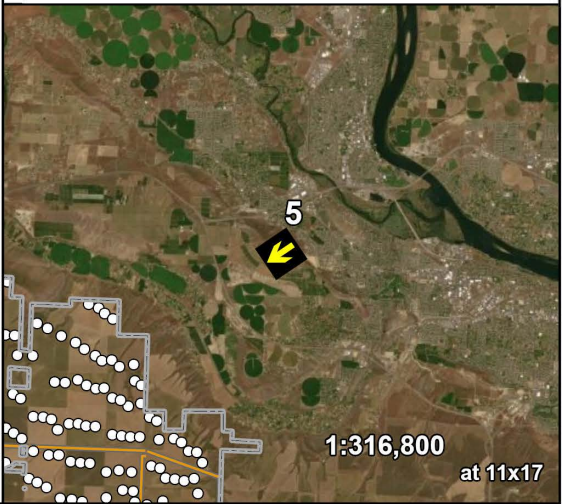
BENTON COUNTY, WA

-  Viewpoint Location and Photo Direction
-  Project Lease Boundary
-  Proposed Turbine Location
-  Proposed Transmission Line

View direction (deg): 236
Horizontal field of view (deg):..... 58
Vertical field of view (deg):..... 15

* Original photos and simulations submitted in 2021
To approximate how the project will appear to a viewer in the natural setting, this sheet should be printed at 11 x 17 inches, full size with no scaling, and viewed at 8 inches from the eye. If viewed on a computer monitor, the document should be scaled at 100% and viewed at 8 inches from the eye.

NOT FOR CONSTRUCTION



R:\PROJECTS\HORSE HEAVEN_6430\VIEWSHED\MAPS\VISUAL SIMULATION PHOTOS_20221018.apr

Existing Conditions

Project Simulation Option 1

244 WTG

Project Simulation Option 2

150 WTG



Horse Heaven Wind Project



Figure 8-1b
Representative Viewpoint 5

Existing Conditions and Project Simulations - Revised*

BENTON COUNTY, WA



Viewpoint Location and
Photo Direction



Project Lease Boundary



Proposed Turbine Location



Proposed Transmission Line

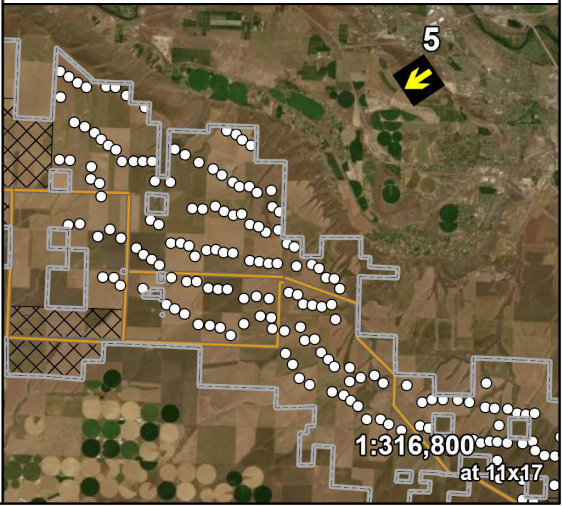


Solar Siting Area

View direction (deg):	236
Horizontal field of view (deg):.....	58
Vertical field of view (deg):.....	15
Max. WTGs within field of view:...	101 / 76
Max. Visible WTGs at tip height:..	101 / 76
Max. Visible WTGs at hub height:	101 / 76
Closest WTG (mi):.....	4.7 / 4.7
Furthest WTG (mi):.....	9.9 / 9.8
Closest Solar Array (mi):.....	No view
Closest Transmission Line (mi):.....	No view
Closest Substation / BESS (mi):...	No view

* Original photos and simulations submitted in 2021
To approximate how the project will appear to a viewer in the natural setting, this sheet should be printed at 11 x 17 inches, full size with no scaling, and viewed at 8 inches from the eye. If viewed on a computer monitor, the document should be scaled at 100% and viewed at 8 inches from the eye.

NOT FOR CONSTRUCTION



R:\PROJECTS\HORSE HEAVEN 6430\VIEWSHED\MAPS\VISUAL SIMULATION PHOTOS 20221018\VISUAL SIMULATION PHOTOS 20221018.aprx

As Taken (April 2022)



Horse Heaven
Wind Project



Figure 9-1a
Representative Viewpoint 6
Existing Conditions -
Revised*

BENTON COUNTY, WA

- Viewpoint Location and Photo Direction
- Project Lease Boundary
- Proposed Turbine Location
- Proposed Substation/BESS
- Proposed Transmission Line
- Solar Siting Area

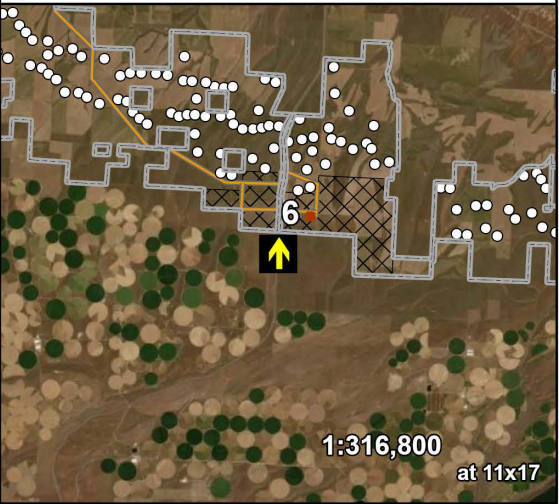
View direction (deg): 360
Horizontal field of view (deg):..... 60
Vertical field of view (deg):..... 15

Sky Replacement and De-hazing



* Original photos and simulations submitted in 2021
To approximate how the project will appear to a viewer in the natural setting, this sheet should be printed at 11 x 17 inches, full size with no scaling, and viewed at 8 inches from the eye. If viewed on a computer monitor, the document should be scaled at 100% and viewed at 8 inches from the eye.

NOT FOR CONSTRUCTION



R:\PROJECTS\HORSE HEAVEN_6430\VIEWSHED\MAPS\VISUAL SIMULATION PHOTOS_20221018.aprx

Existing Conditions



Project Simulation Option 1

244 WTG



Project Simulation Option 2

150 WTG



Horse Heaven
Wind Project



Figure 9-1b
Representative Viewpoint 6

Existing Conditions and
Project Simulations - Revised*

BENTON COUNTY, WA



Viewpoint Location and
Photo Direction



Project Lease Boundary



Proposed Turbine Location



Proposed Substation/BESS



Proposed Transmission Line

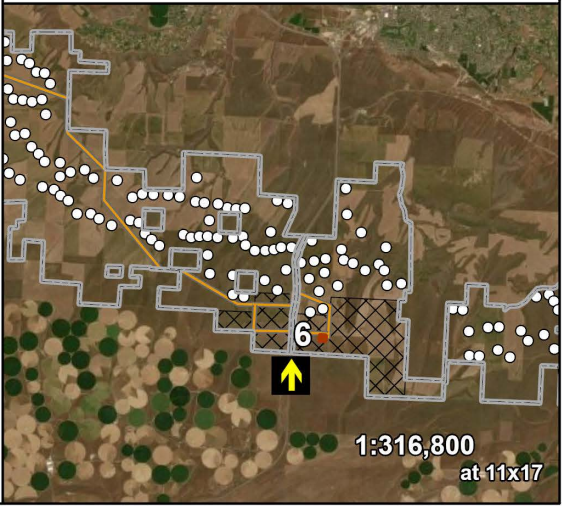


Solar Siting Area

View direction (deg):	360
Horizontal field of view (deg):.....	60
Vertical field of view (deg):.....	15
Max. WTGs within field of view:...	41 / 17
Max. Visible WTGs at tip height:..	37 / 17
Max. Visible WTGs at hub height:	29 / 17
Closest WTG (mi):.....	1.7 / 1.8
Furthest WTG (mi):.....	5.7 / 5
Closest Solar Array (mi):.....	0.6
Closest Transmission Line (mi):.....	1.2
Closest Substation / BESS (mi):..	Not in frame

* Original photos and simulations submitted in 2021
To approximate how the project will appear to a viewer in the natural setting, this sheet should be printed at 11 x 17 inches, full size with no scaling, and viewed at 8 inches from the eye. If viewed on a computer monitor, the document should be scaled at 100% and viewed at 8 inches from the eye.

NOT FOR CONSTRUCTION



R:\PROJECTS\HORSE HEAVEN_6430\VIEWSHED\MAPS\VISUAL SIMULATION PHOTOS_20221018\VISUAL SIMULATION PHOTOS_20221018.aprx

As Taken (April 2022)



Horse Heaven
Wind Project



Figure 10-1a
Representative Viewpoint 7
Existing Conditions -
Revised*
BENTON COUNTY, WA

- Viewpoint Location and Photo Direction
- Project Lease Boundary
- Proposed Turbine Location
- Proposed Substation/BESS
- Proposed Transmission Line
- Solar Siting Area

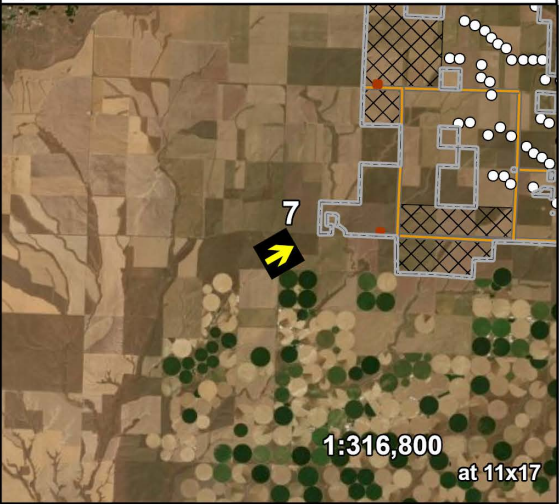
View direction (deg): 60
Horizontal field of view (deg):..... 58
Vertical field of view (deg):..... 15

Sky Replacement and De-hazing



* Original photos and simulations submitted in 2021
To approximate how the project will appear to a viewer in the natural setting, this sheet should be printed at 11 x 17 inches, full size with no scaling, and viewed at 8 inches from the eye. If viewed on a computer monitor, the document should be scaled at 100% and viewed at 8 inches from the eye.

NOT FOR CONSTRUCTION



Existing Conditions

Project Simulation Option 1

244 WTG

Project Simulation Option 2

150 WTG



**Horse Heaven
Wind Project**



**Figure 10-1b
Representative Viewpoint 7**

**Existing Conditions and
Project Simulations - Revised***

BENTON COUNTY, WA



Viewpoint Location and
Photo Direction



Project Lease Boundary



Proposed Turbine Location



Proposed Substation/BESS



Proposed Transmission Line

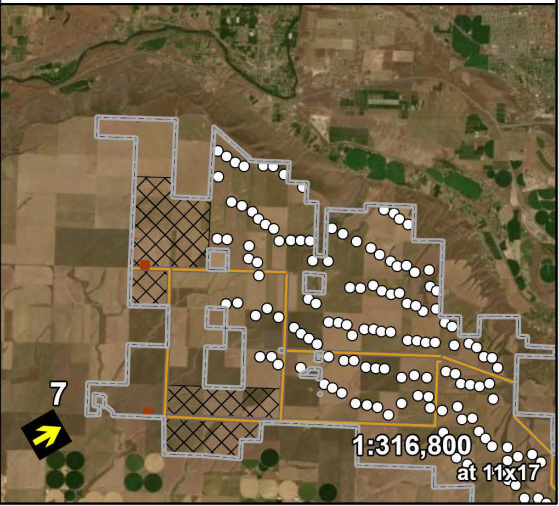


Solar Siting Area

View direction (deg):	60
Horizontal field of view (deg):.....	58
Vertical field of view (deg):.....	15
Max. WTGs within field of view:...	122 / 90
Max. Visible WTGs at tip height:..	118 / 87
Max. Visible WTGs at hub height:	110 / 85
Closest WTG (mi):.....	5.8 / 5.8
Furthest WTG (mi):.....	11.9 / 11.8
Closest Solar Array (mi):.....	3.1
Closest Transmission Line (mi):.....	2.2
Closest Substation / BESS (mi):...	No view

* Original photos and simulations submitted in 2021
To approximate how the project will appear to a viewer in the natural setting, this sheet should be printed at 11 x 17 inches, full size with no scaling, and viewed at 8 inches from the eye. If viewed on a computer monitor, the document should be scaled at 100% and viewed at 8 inches from the eye.

NOT FOR CONSTRUCTION



R:\PROJECTS\HORSE HEAVEN 6430\VIEWSHED\MAPS\VISUAL SIMULATION PHOTOS 20211006.mxd

Existing Conditions



Project Simulation Option 1

244 WTG



Project Simulation Option 2

150 WTG



Horse Heaven
Wind Project



Figure 11
Representative Viewpoint 8a
Existing Conditions
and Project Simulations

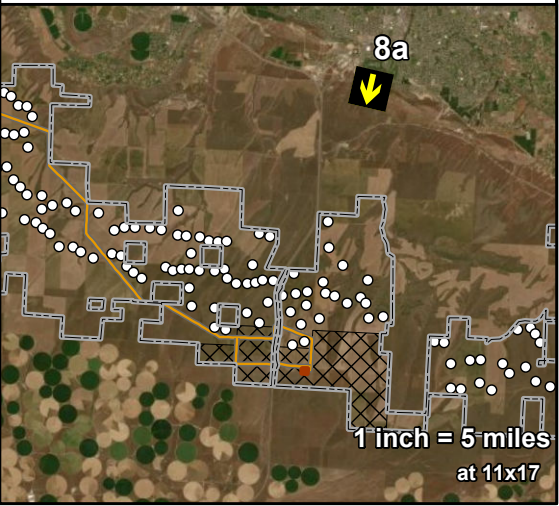
BENTON COUNTY, WA

- Viewpoint Location and Photo Direction
- Project Lease Boundary
- Proposed Turbine Location
- Proposed Substation/BESS
- Proposed Transmission Line
- Solar Siting Area

View direction (deg):	193
Horizontal field of view (deg):.....	57
Vertical field of view (deg):.....	15
Max. WTGs within field of view:...	43 / 20
Max. Visible WTGs at tip height:..	40 / 19
Max. Visible WTGs at hub height:	37 / 15
Closest WTG (mi):.....	3.6 / 5.4
Furthest WTG (mi):.....	7.4 / 7.3
Closest Solar Array (mi):.....	No view
Closest Transmission Line (mi):.....	No view
Closest Substation / BESS (mi):...	No view

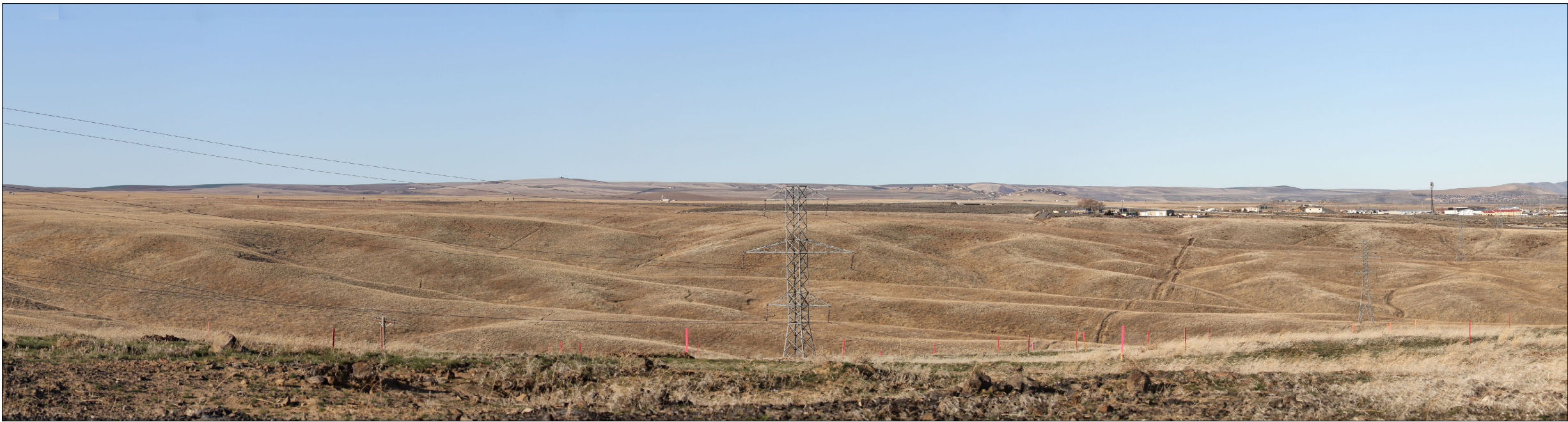
To approximate how the project will appear to a viewer in the natural setting, this sheet should be printed at 11 x 17 inches, full size with no scaling, and viewed at 8 inches from the eye. If viewed on a computer monitor, the document should be scaled at 100% and viewed at 8 inches from the eye.

NOT FOR CONSTRUCTION



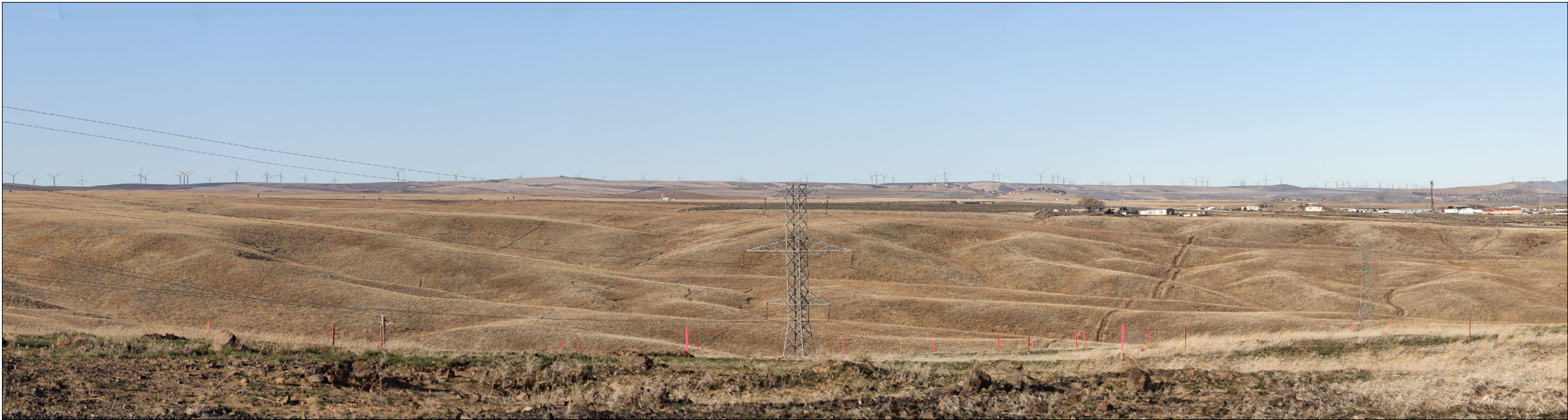
R:\PROJECTS\HORSE HEAVEN 6430\VIEWSHED\MAPS\VISUAL SIMULATION PHOTOS 2021\1006.mxd

Existing Conditions



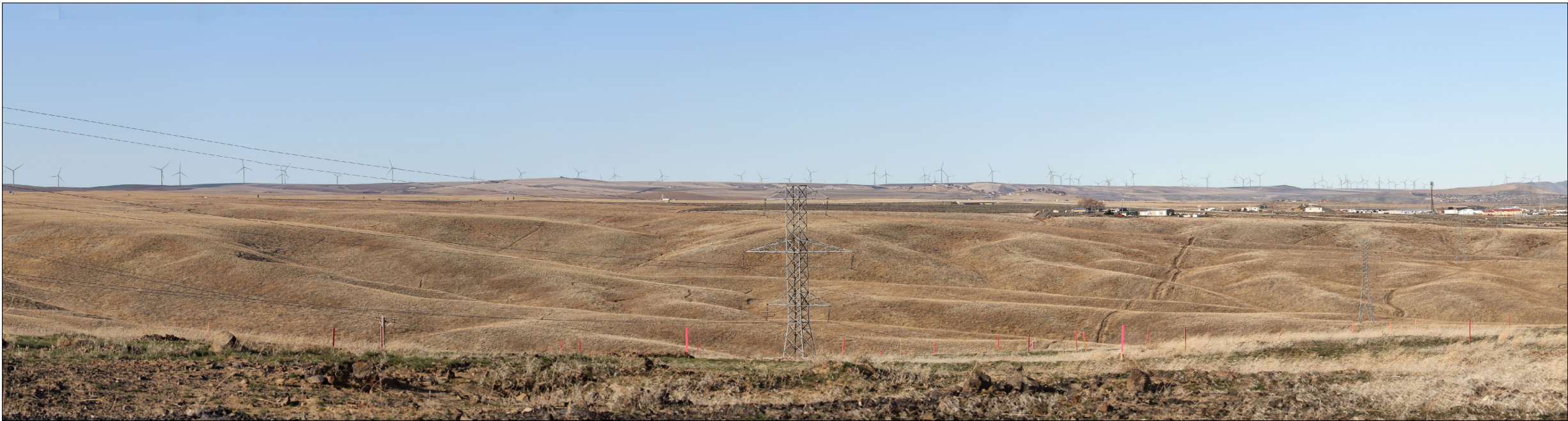
Project Simulation Option 1

244 WTG



Project Simulation Option 2

150 WTG



Horse Heaven
Wind Project



Figure 12
Representative Viewpoint 8b
Existing Conditions
and Project Simulations

BENTON COUNTY, WA



Viewpoint Location and
Photo Direction



Project Lease Boundary



Proposed Turbine Location



Proposed Transmission Line

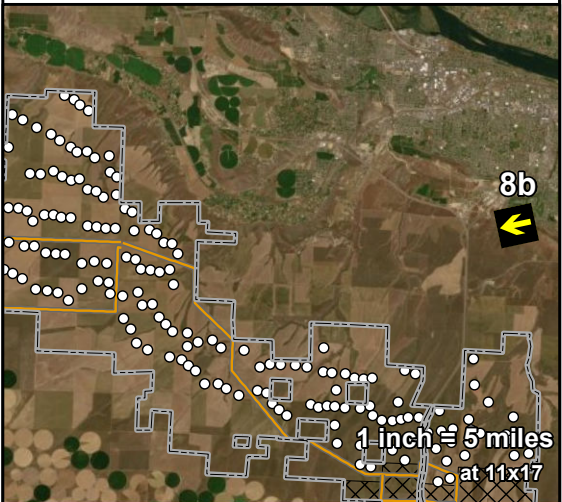


Solar Siting Area

View direction (deg):	258
Horizontal field of view (deg):.....	57
Vertical field of view (deg):.....	15
Max. WTGs within field of view:...	153 / 105
Max. Visible WTGs at tip height:...	137 / 101
Max. Visible WTGs at hub height:	102 / 83
Closest WTG (mi):.....	5.9 / 6.1
Furthest WTG (mi):.....	16.8 / 16.6
Closest Solar Array (mi):.....	No view
Closest Transmission Line (mi):.....	No view
Closest Substation / BESS (mi):...	No view

To approximate how the project will appear to a viewer in the natural setting, this sheet should be printed at 11 x 17 inches, full size with no scaling, and viewed at 8 inches from the eye. If viewed on a computer monitor, the document should be scaled at 100% and viewed at 8 inches from the eye.

NOT FOR CONSTRUCTION



Existing Conditions



Project Simulation Option 1

244 WTG



Project Simulation Option 2

150 WTG



Horse Heaven
Wind Project



Figure 13
Representative Viewpoint 9
Existing Conditions
and Project Simulations

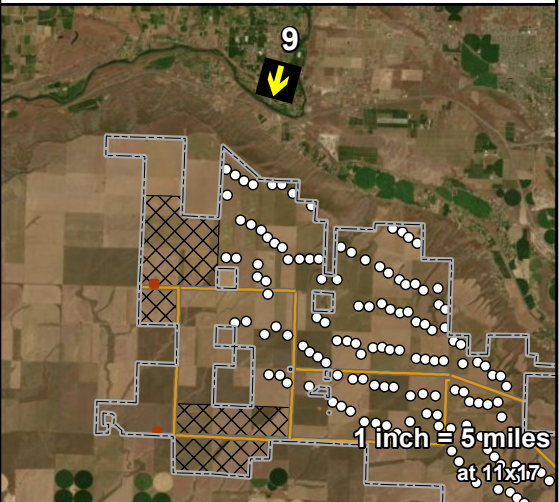
BENTON COUNTY, WA

- Viewpoint Location and Photo Direction
- Project Lease Boundary
 - Proposed Turbine Location
 - Proposed Substation/BESS
 - Proposed Transmission Line
 - Solar Siting Area

View direction (deg):	195
Horizontal field of view (deg):.....	73
Vertical field of view (deg):.....	19
Max. WTGs within field of view:...	61 / 47
Max. Visible WTGs at tip height:..	5 / 5
Max. Visible WTGs at hub height:	4 / 4
Closest WTG (mi):.....	2.7 / 2.7
Furthest WTG (mi):.....	9.7 / 9.6
Closest Solar Array (mi):.....	No view
Closest Transmission Line (mi):.....	No view
Closest Substation / BESS (mi):...	No view

To approximate how the project will appear to a viewer in the natural setting, this sheet should be printed at 11 x 17 inches, full size with no scaling, and viewed at 6 inches from the eye. If viewed on a computer monitor, the document should be scaled at 100% and viewed at 6 inches from the eye.

NOT FOR CONSTRUCTION



Existing Conditions



Project Simulation Option 1

244 WTG



Project Simulation Option 2

150 WTG



Horse Heaven
Wind Project



Figure 14
Representative Viewpoint 10
Existing Conditions
and Project Simulations

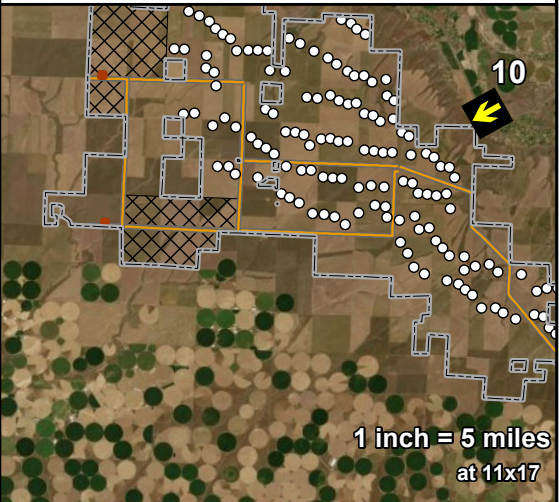
BENTON COUNTY, WA

- Viewpoint Location and Photo Direction
- Project Lease Boundary
- Proposed Turbine Location
- Proposed Substation/BESS
- Proposed Transmission Line
- Solar Siting Area

View direction (deg):	241
Horizontal field of view (deg):.....	76
Vertical field of view (deg):.....	20
Max. WTGs within field of view:...	79 / 59
Max. Visible WTGs at tip height:..	15 / 15
Max. Visible WTGs at hub height:	9 / 7
Closest WTG (mi):.....	1.5 / 1.5
Furthest WTG (mi):.....	6.6 / 6.6
Closest Solar Array (mi):.....	No view
Closest Transmission Line (mi):.....	No view
Closest Substation / BESS (mi):...	No view

To approximate how the project will appear to a viewer in the natural setting, this sheet should be printed at 11 x 17 inches, full size with no scaling, and viewed at 6 inches from the eye. If viewed on a computer monitor, the document should be scaled at 100% and viewed at 6 inches from the eye.

NOT FOR CONSTRUCTION



R:\PROJECTS\HORSE HEAVEN 6430\VIEWSHED\MAPS\VISUAL SIMULATION PHOTOS 2021\1006.mxd

Existing Conditions



Project Simulation Option 1

244 WTG



Project Simulation Option 2

150 WTG



Horse Heaven
Wind Project



Figure 15
Representative Viewpoint 11
Existing Conditions
and Project Simulations

BENTON COUNTY, WA



Viewpoint Location and
Photo Direction



Project Lease Boundary



Proposed Turbine Location

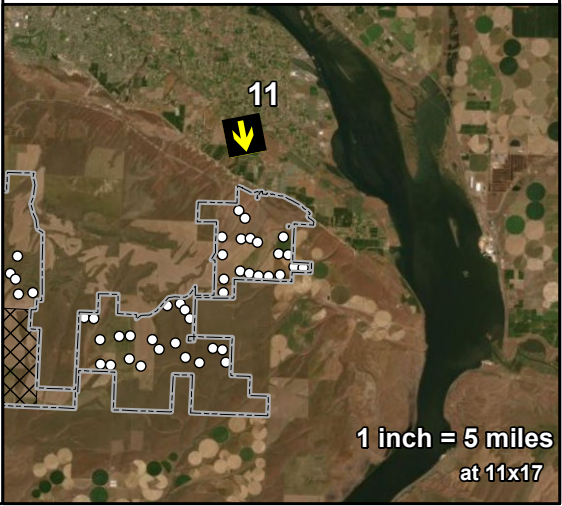


Solar Siting Area

View direction (deg):	169
Horizontal field of view (deg):.....	73
Vertical field of view (deg):.....	19
Max. WTGs within field of view:...	33 / 47
Max. Visible WTGs at tip height:..	23 / 12
Max. Visible WTGs at hub height:	19 / 11
Closest WTG (mi):.....	2 / 2.5
Furthest WTG (mi):.....	6.6 / 6.6
Closest Solar Array (mi):.....	No view
Closest Transmission Line (mi):.....	No view
Closest Substation / BESS (mi):...	No view

To approximate how the project will appear to a viewer in the natural setting, this sheet should be printed at 11 x 17 inches, full size with no scaling, and viewed at 6 inches from the eye. If viewed on a computer monitor, the document should be scaled at 100% and viewed at 6 inches from the eye.

NOT FOR CONSTRUCTION



R:\PROJECTS\HORSE HEAVEN 6430\VIEWSHED\MAPS\VISUAL SIMULATION PHOTOS 20211006.mxd

Existing Conditions



Project Simulation Option 1
244 WTG



Project Simulation Option 2
150 WTG



Horse Heaven
Wind Project



Figure 16
Representative Viewpoint 12
Existing Conditions
and Project Simulations

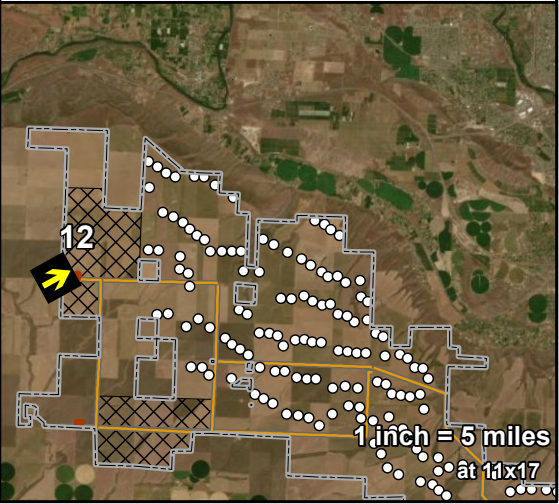
BENTON COUNTY, WA

- Viewpoint Location and Photo Direction
- Project Lease Boundary
 - Proposed Turbine Location
- Proposed Substation/BESS
- Proposed Transmission Line
- Solar Siting Area

View direction (deg):	61
Horizontal field of view (deg):.....	73
Vertical field of view (deg):.....	19
Max. WTGs within field of view:...	57 / 40
Max. Visible WTGs at tip height:..	53 / 40
Max. Visible WTGs at hub height:	52 / 37
Closest WTG (mi):.....	2.5 / 2.5
Furthest WTG (mi):.....	8.7 / 8.6
Closest Solar Array (mi):.....	0.2
Closest Transmission Line (mi):.....	0.2
Closest Substation / BESS (mi):..	0.5

To approximate how the project will appear to a viewer in the natural setting, this sheet should be printed at 11 x 17 inches, full size with no scaling, and viewed at 6 inches from the eye. If viewed on a computer monitor, the document should be scaled at 100% and viewed at 6 inches from the eye.

NOT FOR CONSTRUCTION



Existing Conditions



Project Simulation Option 1

244 WTG



Project Simulation Option 2

150 WTG



Horse Heaven
Wind Project



Figure 17
Representative Viewpoint 13
Existing Conditions
and Project Simulations

BENTON COUNTY, WA

- Viewpoint Location and Photo Direction
- Project Lease Boundary
- Proposed Turbine Location
- Proposed Substation/BESS
- Proposed Transmission Line
- Solar Siting Area

View direction (deg):	18
Horizontal field of view (deg):.....	73
Vertical field of view (deg):.....	19
Max. WTGs within field of view:...	73 / 54
Max. Visible WTGs at tip height:..	69 / 52
Max. Visible WTGs at hub height:	65 / 51
Closest WTG (mi):.....	1.1 / 1.1
Furthest WTG (mi):.....	7.3 / 7.1
Closest Solar Array (mi):.....	Not in frame
Closest Transmission Line (mi):.....	0.2
Closest Substation / BESS (mi):...	No view

To approximate how the project will appear to a viewer in the natural setting, this sheet should be printed at 11 x 17 inches, full size with no scaling, and viewed at 6 inches from the eye. If viewed on a computer monitor, the document should be scaled at 100% and viewed at 6 inches from the eye.

NOT FOR CONSTRUCTION

