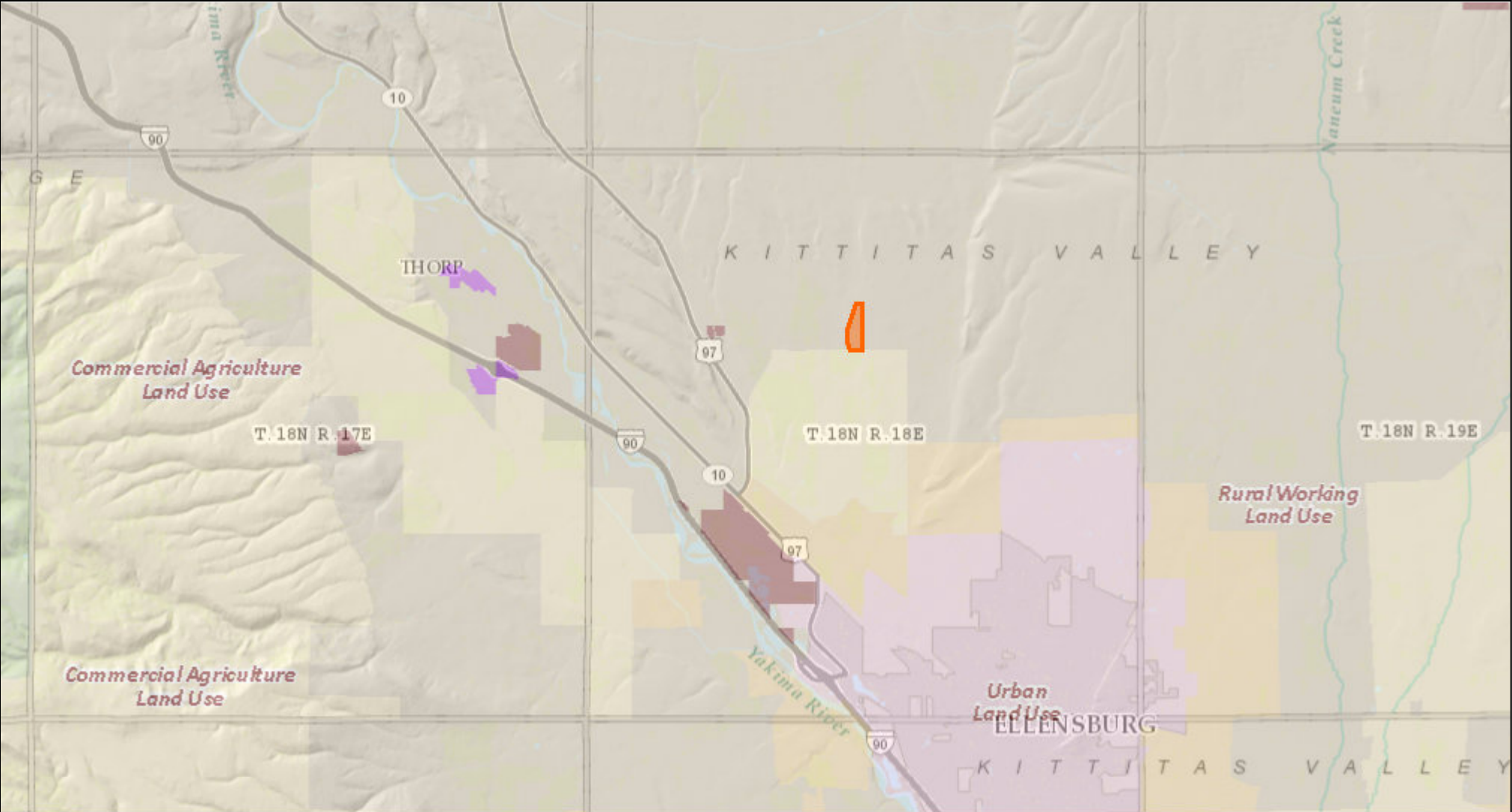


Appendix A

Columbia Solar Project Maps Land Use, Zoning and Aerials

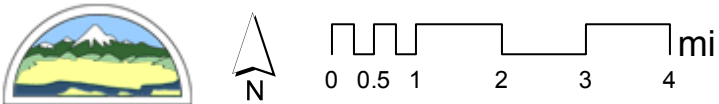
Fumaria - Land Use - Rural Working



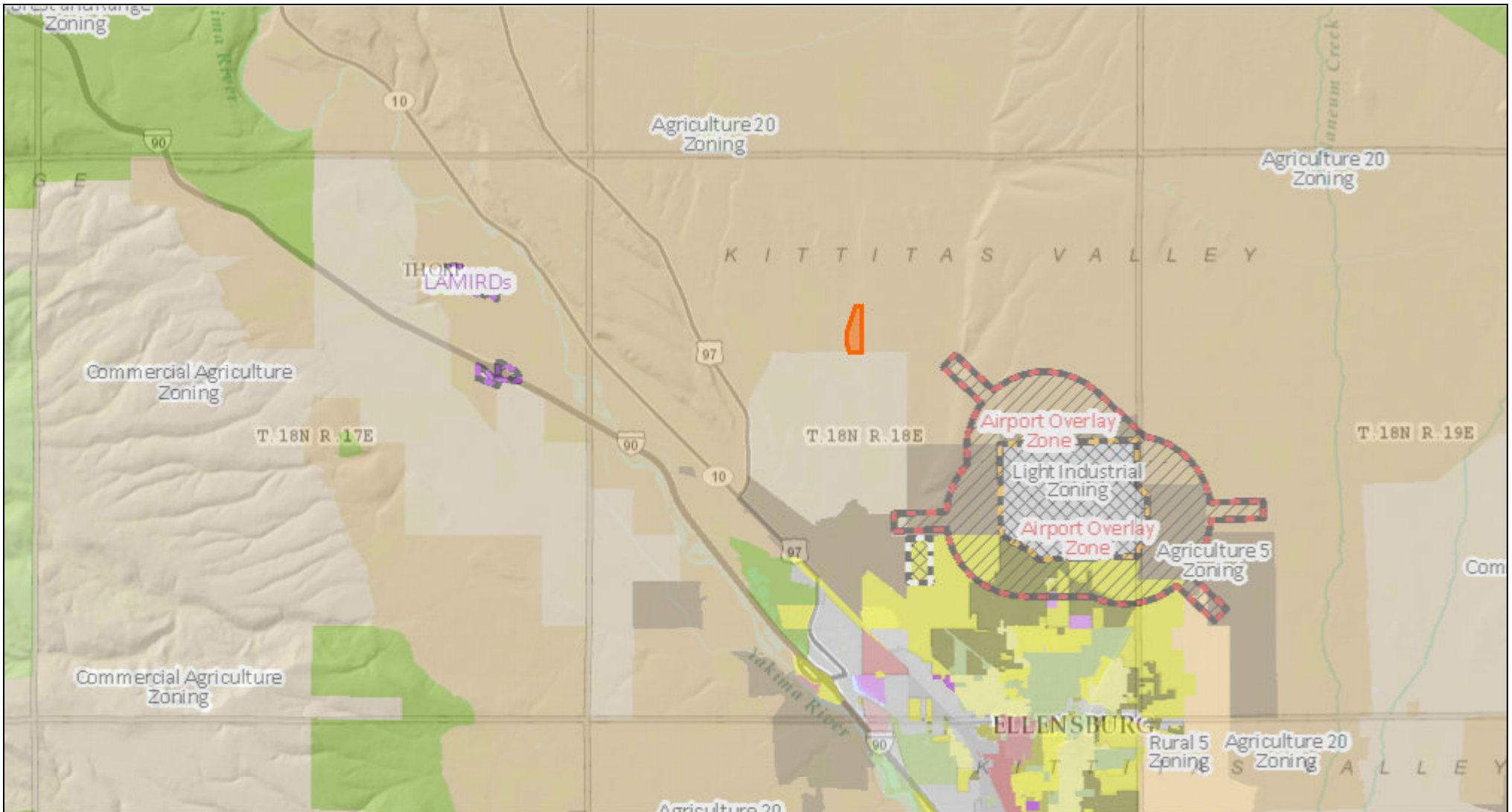
Date: 1/19/2018

1 inch = 12,037 feet
Relative Scale 1:144,448

Disclaimer:
Kittitas County makes every effort to produce and publish the most current and accurate information possible. No warranties, expressed or implied, are provided for the data, its use, or its interpretation. Kittitas County does not guarantee the accuracy of the material contained herein and is not responsible for any use, misuse or representations by others regarding this information or its derivatives.



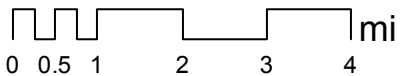
Fumaria - Zoning - Ag 20



Date: 1/19/2018

1 inch = 12,037 feet
Relative Scale 1:144,448

Disclaimer:
Kittitas County makes every effort to produce and publish the most current and accurate information possible. No warranties, expressed or implied, are provided for the data, its use, or its interpretation. Kittitas County does not guarantee the accuracy of the material contained herein and is not responsible for any use, misuse or representations by others regarding this information or its derivatives.



Fumaria Aerial Image



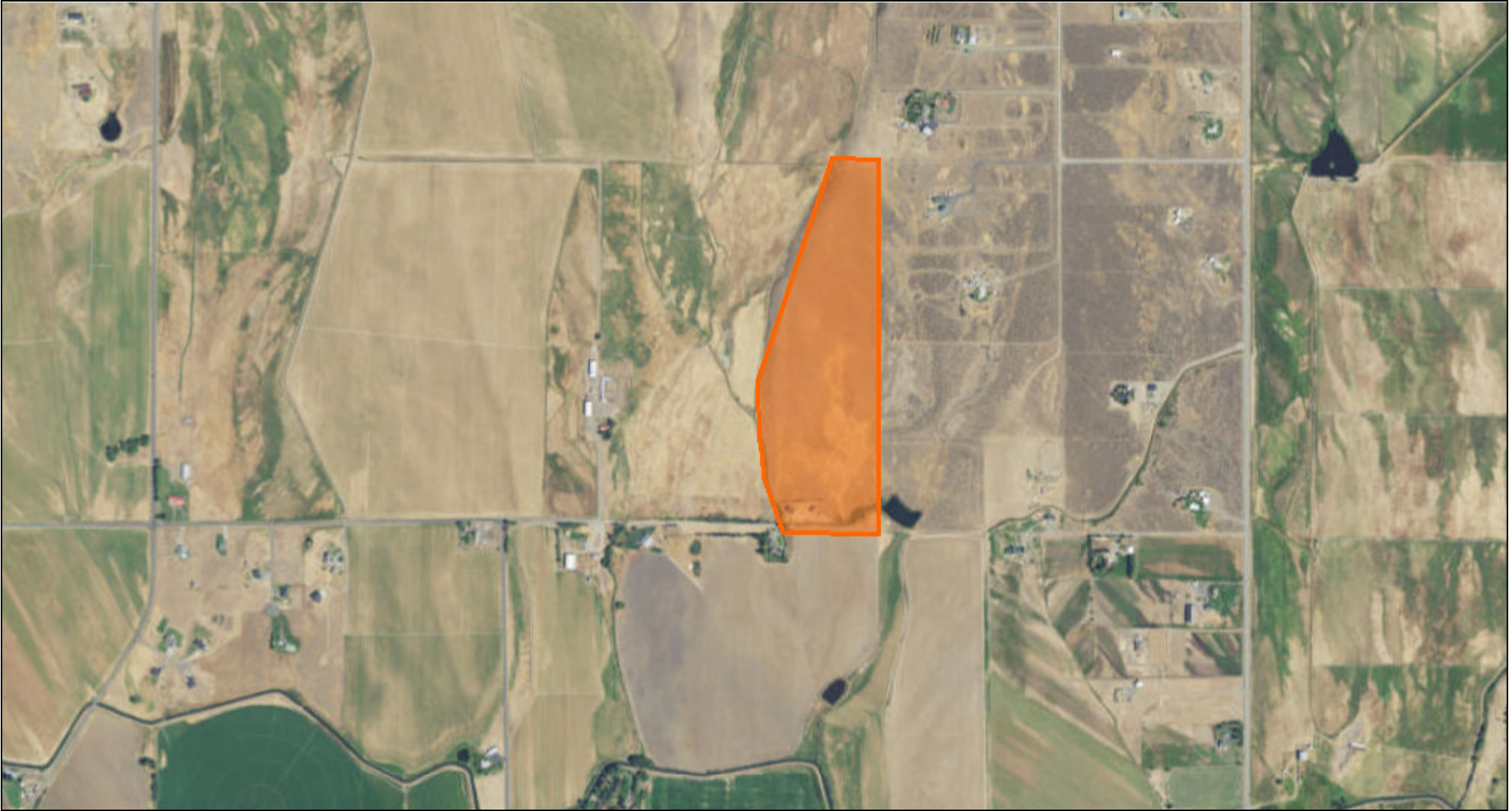
Date: 2/1/2018

1 inch = 6,019 feet
Relative Scale 1:72,224

Disclaimer:
Kittitas County makes every effort to produce and publish the most current and accurate information possible. No warranties, expressed or implied, are provided for the data, its use, or its interpretation. Kittitas County does not guarantee the accuracy of the material contained herein and is not responsible for any use, misuse or representations by others regarding this information or its derivatives.



Fumaria Aerial Image

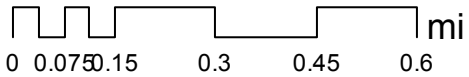


Date: 2/1/2018

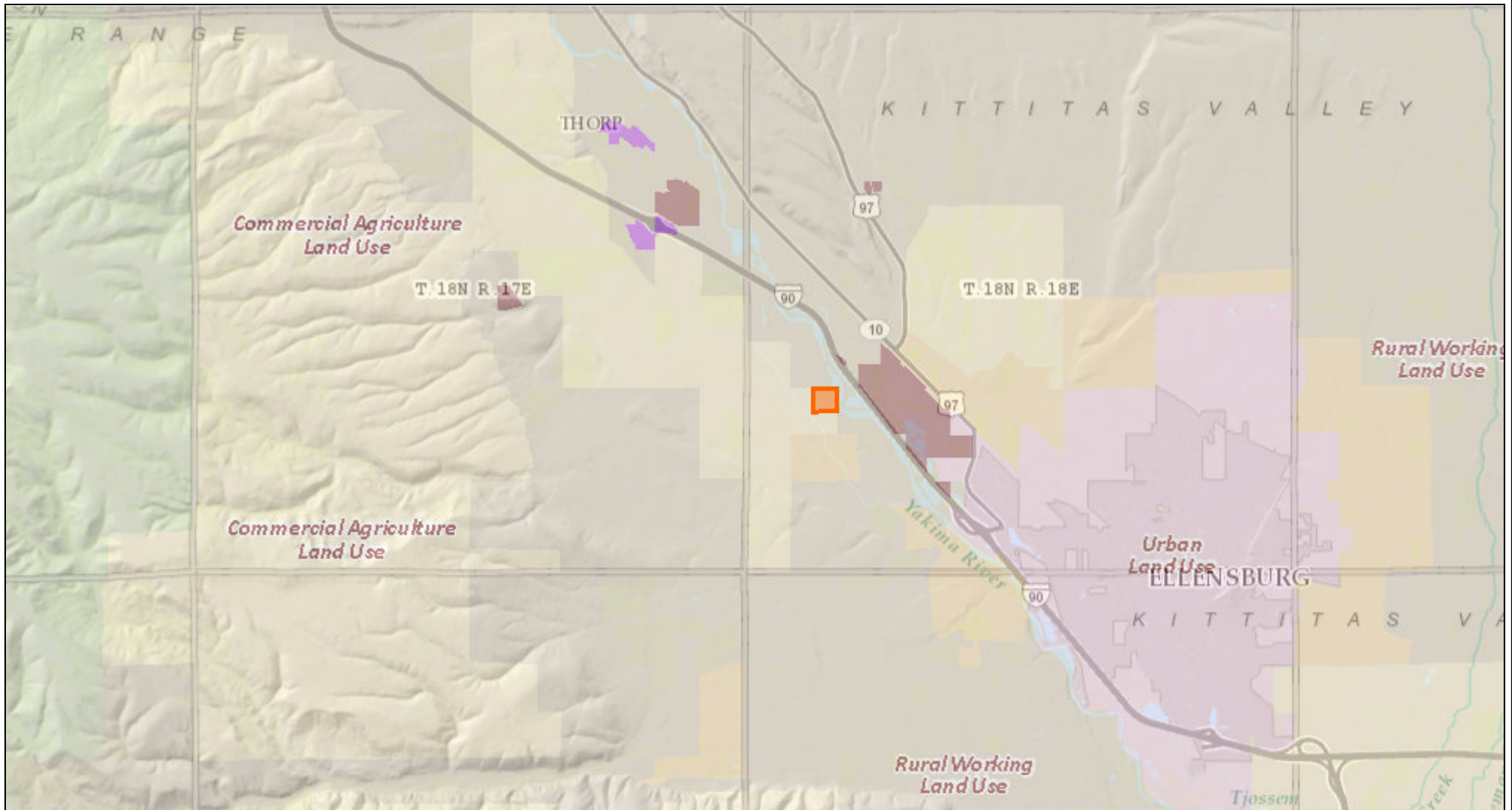
1 inch = 1,505 feet
Relative Scale 1:18,056

Disclaimer:

Kittitas County makes every effort to produce and publish the most current and accurate information possible. No warranties, expressed or implied, are provided for the data, its use, or its interpretation. Kittitas County does not guarantee the accuracy of the material contained herein and is not responsible for any use, misuse or representations by others regarding this information or its derivatives.



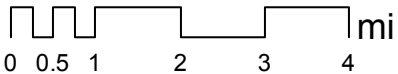
Typha - Land Use - Commercial Ag



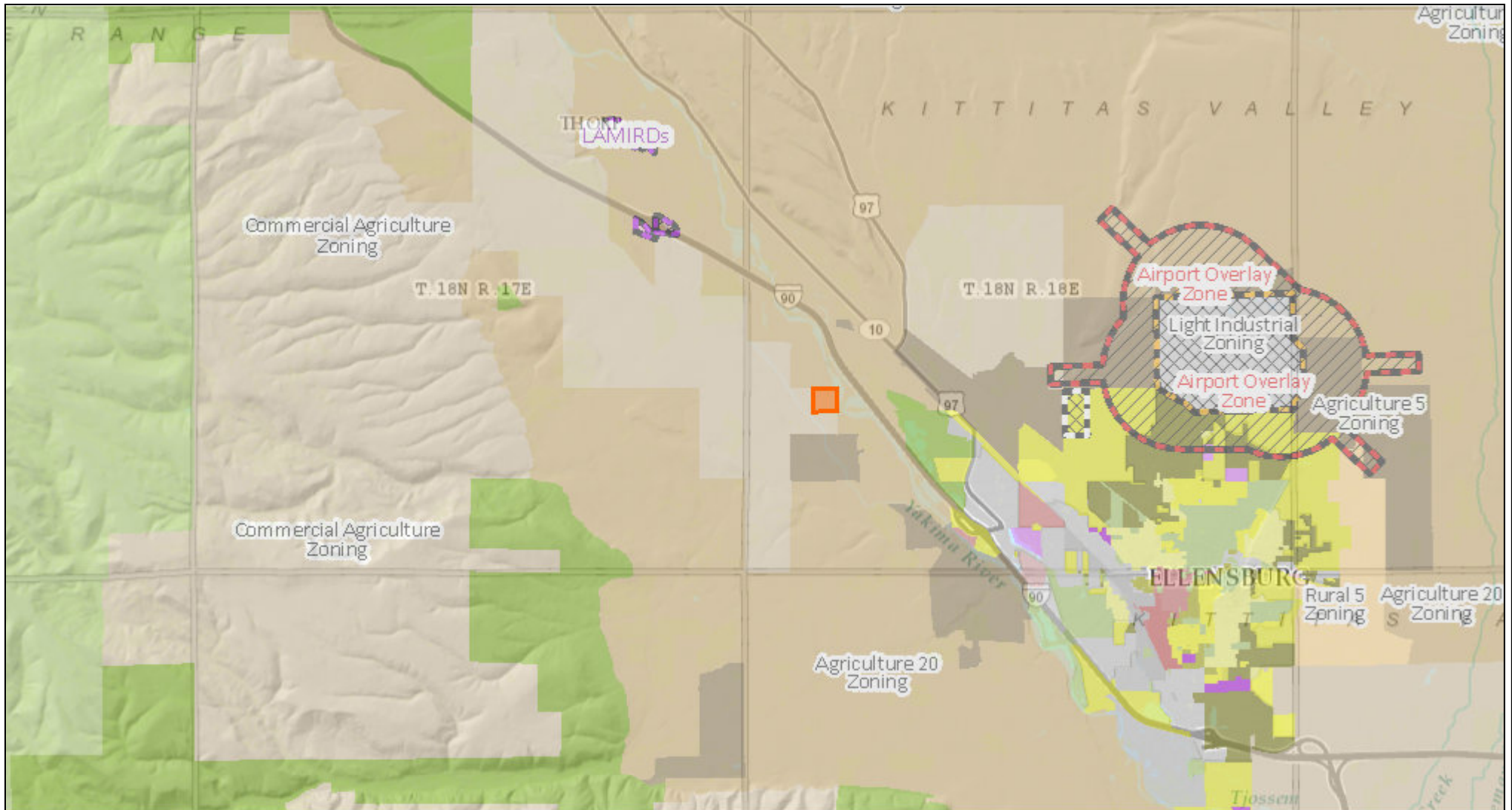
Date: 1/19/2018

1 inch = 12,037 feet
Relative Scale 1:144,448

Disclaimer:
Kittitas County makes every effort to produce and publish the most current and accurate information possible. No warranties, expressed or implied, are provided for the data, its use, or its interpretation. Kittitas County does not guarantee the accuracy of the material contained herein and is not responsible for any use, misuse or representations by others regarding this information or its derivatives.



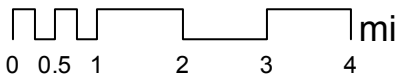
Typha - Zoning - Commercial Ag



Date: 1/19/2018

1 inch = 12,037 feet
Relative Scale 1:144,448

Disclaimer:
Kittitas County makes every effort to produce and publish the most current and accurate information possible. No warranties, expressed or implied, are provided for the data, its use, or its interpretation. Kittitas County does not guarantee the accuracy of the material contained herein and is not responsible for any use, misuse or representations by others regarding this information or its derivatives.



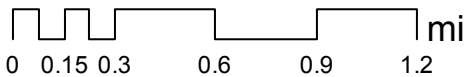
Typha Aerial Image



Date: 2/1/2018

1 inch = 3,009 feet
Relative Scale 1:36,112

Disclaimer:
Kittitas County makes every effort to produce and publish the most current and accurate information possible. No warranties, expressed or implied, are provided for the data, its use, or its interpretation. Kittitas County does not guarantee the accuracy of the material contained herein and is not responsible for any use, misuse or representations by others regarding this information or its derivatives.



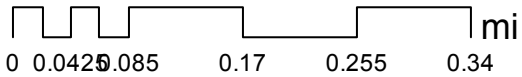
Typha Aerial Image



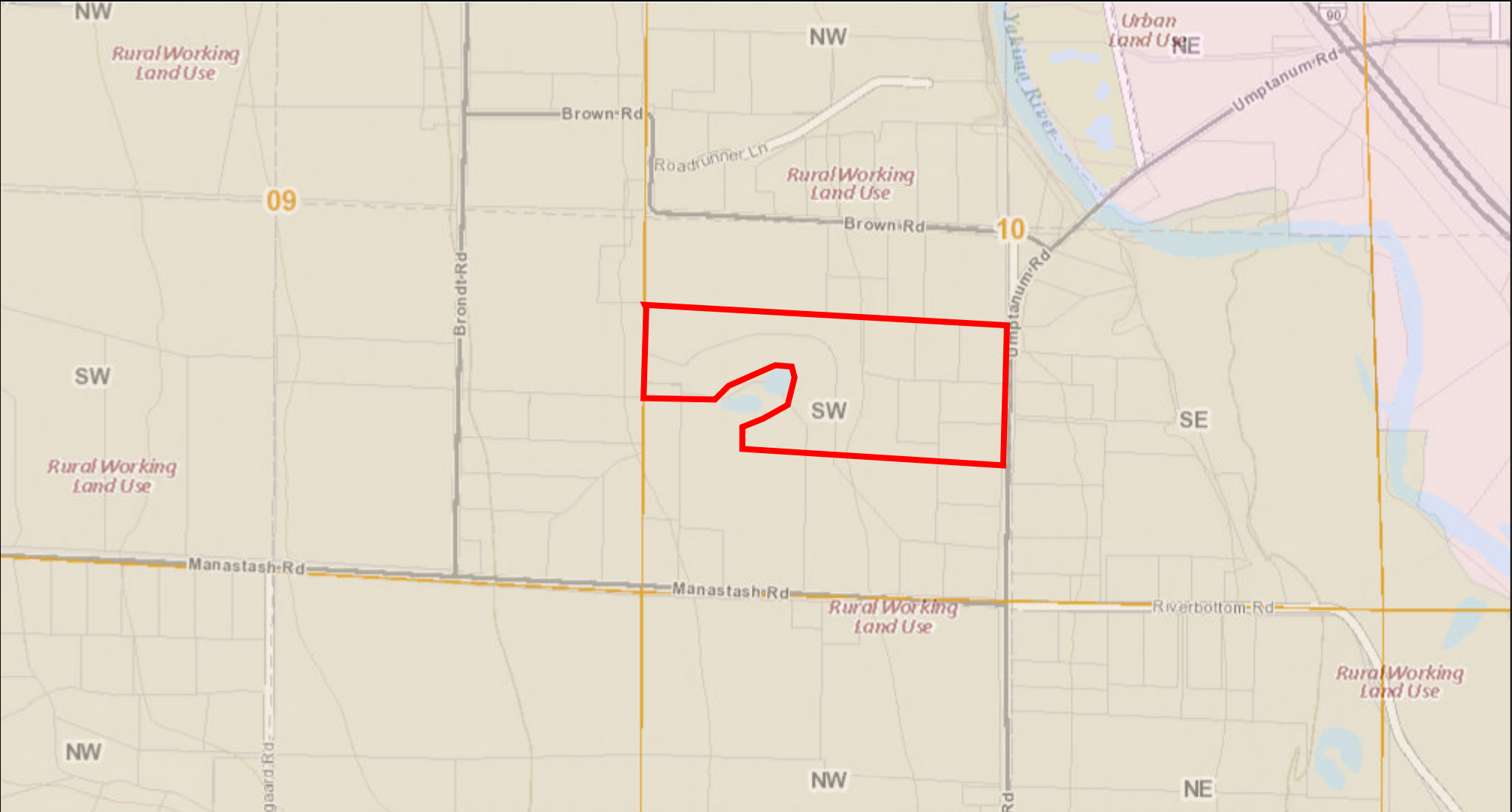
Date: 2/7/2018

1 inch = 752 feet
Relative Scale 1:9,028

Disclaimer:
Kittitas County makes every effort to produce and publish the most current and accurate information possible. No warranties, expressed or implied, are provided for the data, its use, or its interpretation. Kittitas County does not guarantee the accuracy of the material contained herein and is not responsible for any use, misuse or representations by others regarding this information or its derivatives.



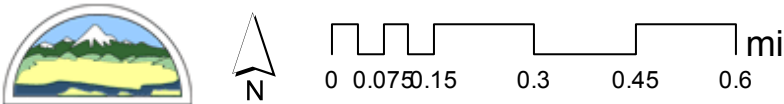
Urtica - Land Use - Rural Working



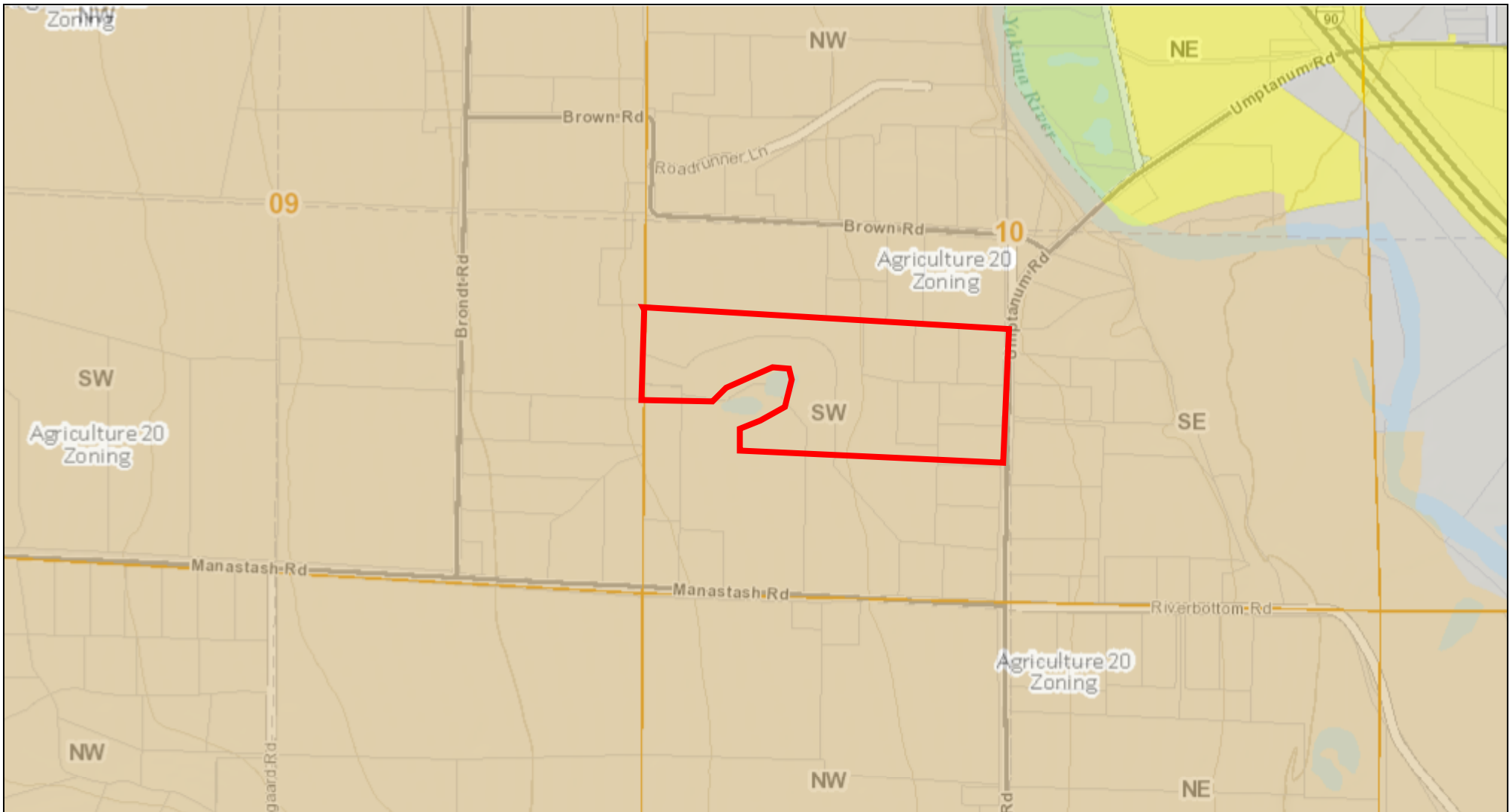
Date: 2/7/2018

Disclaimer:
Kittitas County makes every effort to produce and publish the most current and accurate information possible. No warranties, expressed or implied, are provided for the data, its use, or its interpretation. Kittitas County does not guarantee the accuracy of the material contained herein and is not responsible for any use, misuse or representations by others regarding this information or its derivatives.

1 inch = 1,505 feet
Relative Scale 1:18,056



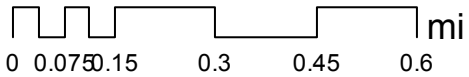
Urtica - Zoning - Ag 20



Date: 2/7/2018

1 inch = 1,505 feet
Relative Scale 1:18,056

Disclaimer:
Kittitas County makes every effort to produce and publish the most current and accurate information possible. No warranties, expressed or implied, are provided for the data, its use, or its interpretation. Kittitas County does not guarantee the accuracy of the material contained herein and is not responsible for any use, misuse or representations by others regarding this information or its derivatives.



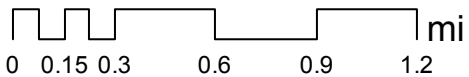
Urtica Aerial Image



Date: 2/7/2018

1 inch = 3,009 feet
Relative Scale 1:36,112

Disclaimer:
Kittitas County makes every effort to produce and publish the most current and accurate information possible. No warranties, expressed or implied, are provided for the data, its use, or its interpretation. Kittitas County does not guarantee the accuracy of the material contained herein and is not responsible for any use, misuse or representations by others regarding this information or its derivatives.



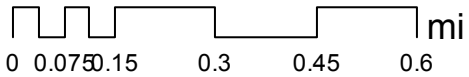
Urtica Aerial Image



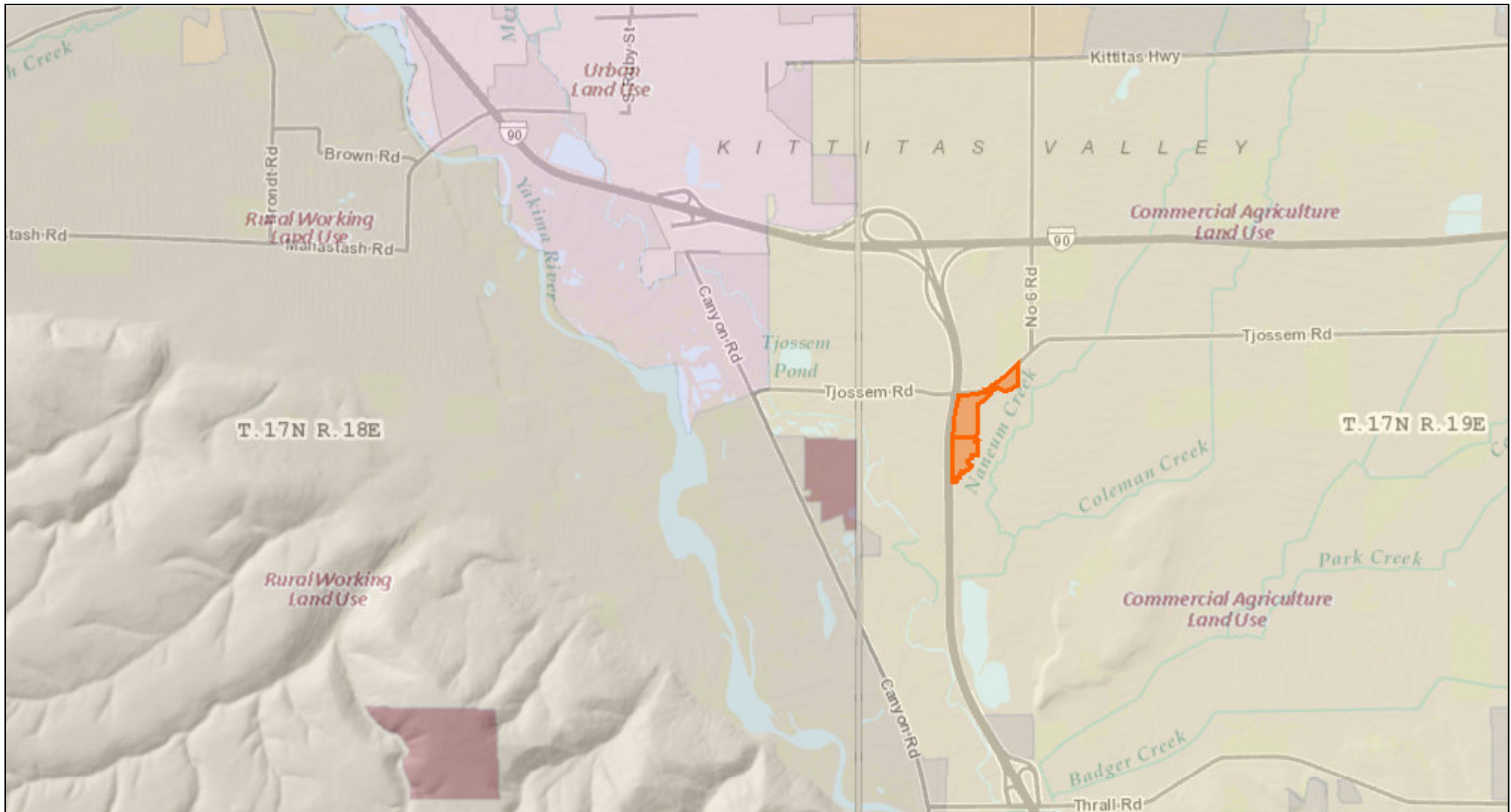
Date: 2/1/2018

1 inch = 1,505 feet
Relative Scale 1:18,056

Disclaimer:
Kittitas County makes every effort to produce and publish the most current and accurate information possible. No warranties, expressed or implied, are provided for the data, its use, or its interpretation. Kittitas County does not guarantee the accuracy of the material contained herein and is not responsible for any use, misuse or representations by others regarding this information or its derivatives.



Camas - Land Use - Commercial Ag



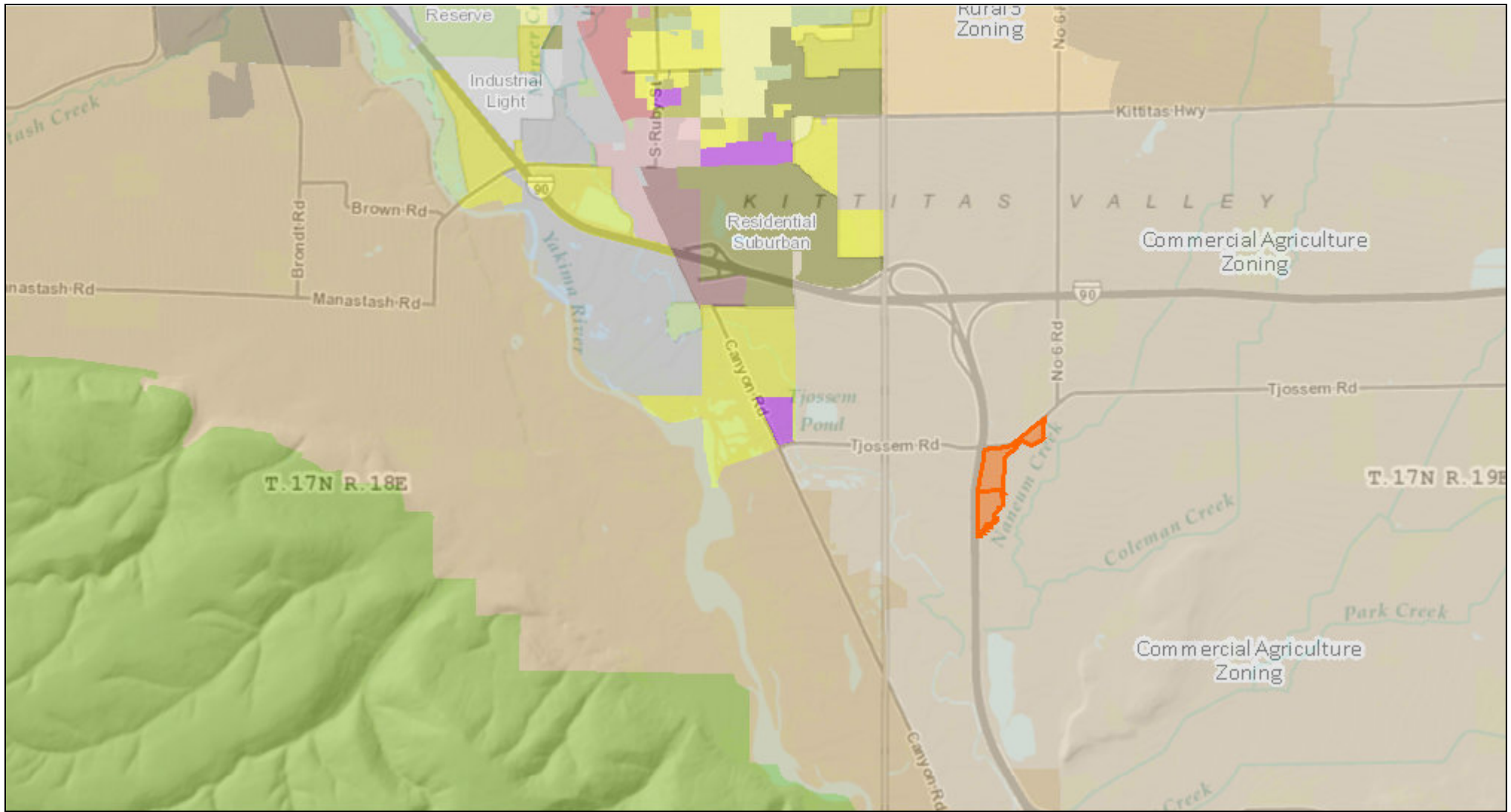
Date: 1/19/2018

1 inch = 6,019 feet
Relative Scale 1:72,224

Disclaimer:
Kittitas County makes every effort to produce and publish the most current and accurate information possible. No warranties, expressed or implied, are provided for the data, its use, or its interpretation. Kittitas County does not guarantee the accuracy of the material contained herein and is not responsible for any use, misuse or representations by others regarding this information or its derivatives.



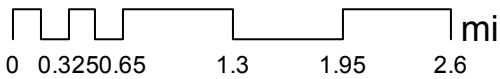
Camas - Zoning - Commercial Ag



Date: 1/19/2018

1 inch = 6,019 feet
Relative Scale 1:72,224

Disclaimer:
Kittitas County makes every effort to produce and publish the most current and accurate information possible. No warranties, expressed or implied, are provided for the data, its use, or its interpretation. Kittitas County does not guarantee the accuracy of the material contained herein and is not responsible for any use, misuse or representations by others regarding this information or its derivatives.



Camas Aerial Image



Date: 2/1/2018

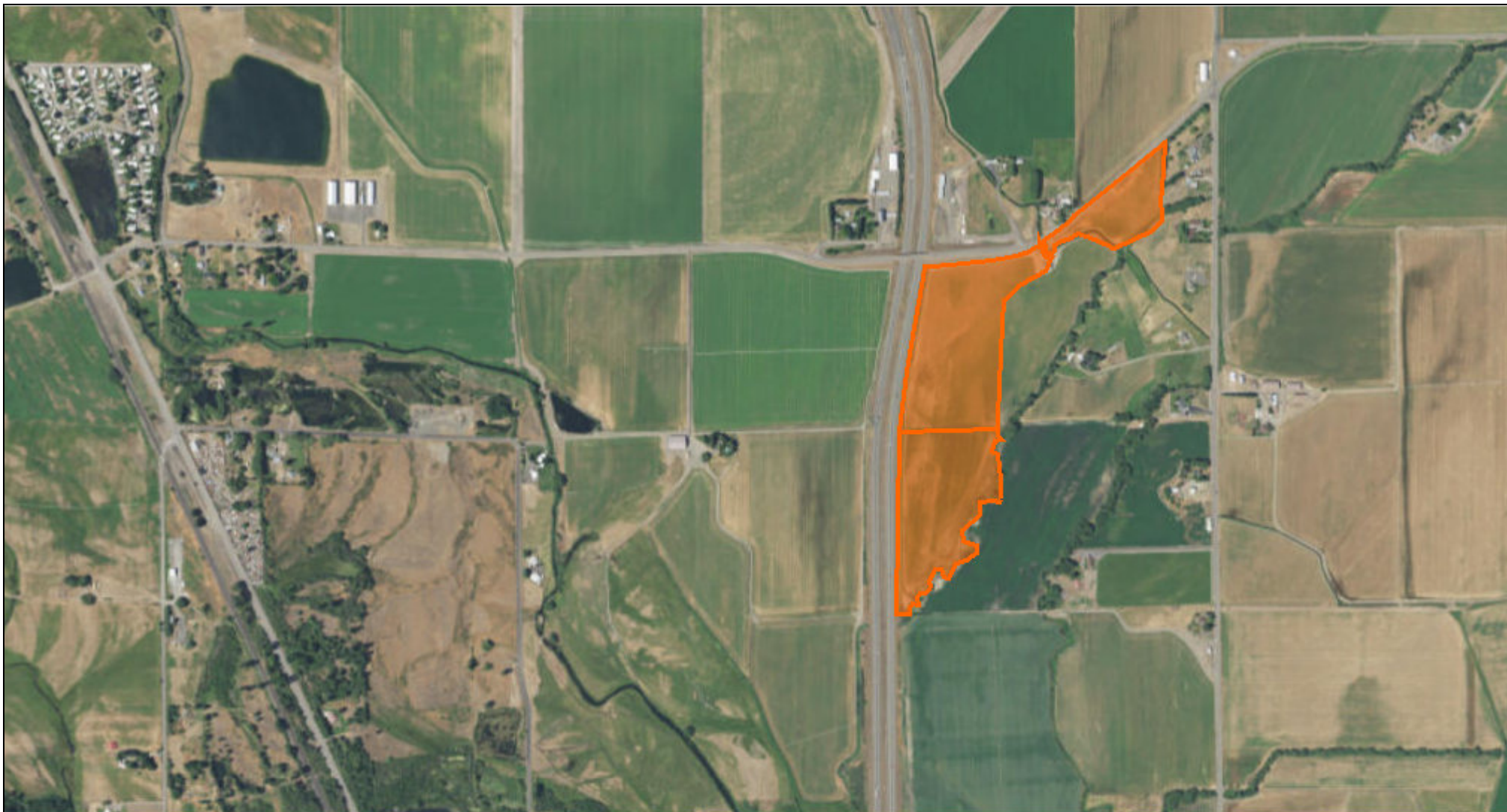
1 inch = 6,019 feet
Relative Scale 1:72,224

Disclaimer:

Kittitas County makes every effort to produce and publish the most current and accurate information possible. No warranties, expressed or implied, are provided for the data, its use, or its interpretation. Kittitas County does not guarantee the accuracy of the material contained herein and is not responsible for any use, misuse or representations by others regarding this information or its derivatives.



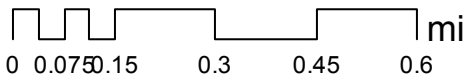
Camas Aerial Image



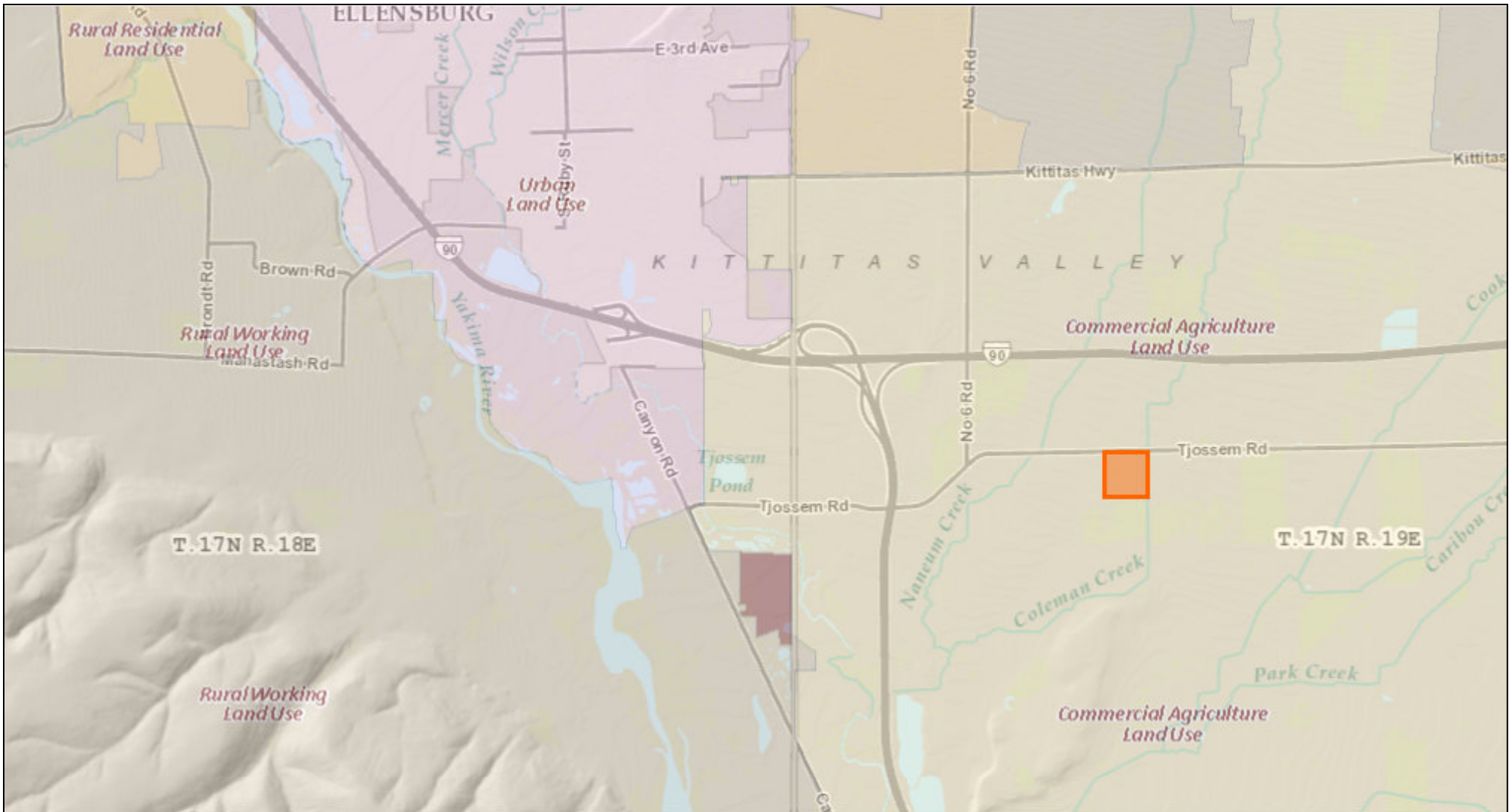
Date: 2/1/2018

1 inch = 1,505 feet
Relative Scale 1:18,056

Disclaimer:
Kittitas County makes every effort to produce and publish the most current and accurate information possible. No warranties, expressed or implied, are provided for the data, its use, or its interpretation. Kittitas County does not guarantee the accuracy of the material contained herein and is not responsible for any use, misuse or representations by others regarding this information or its derivatives.



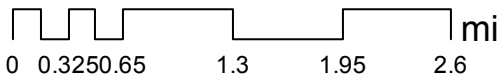
Penstemon - Land Use - Commercial Ag



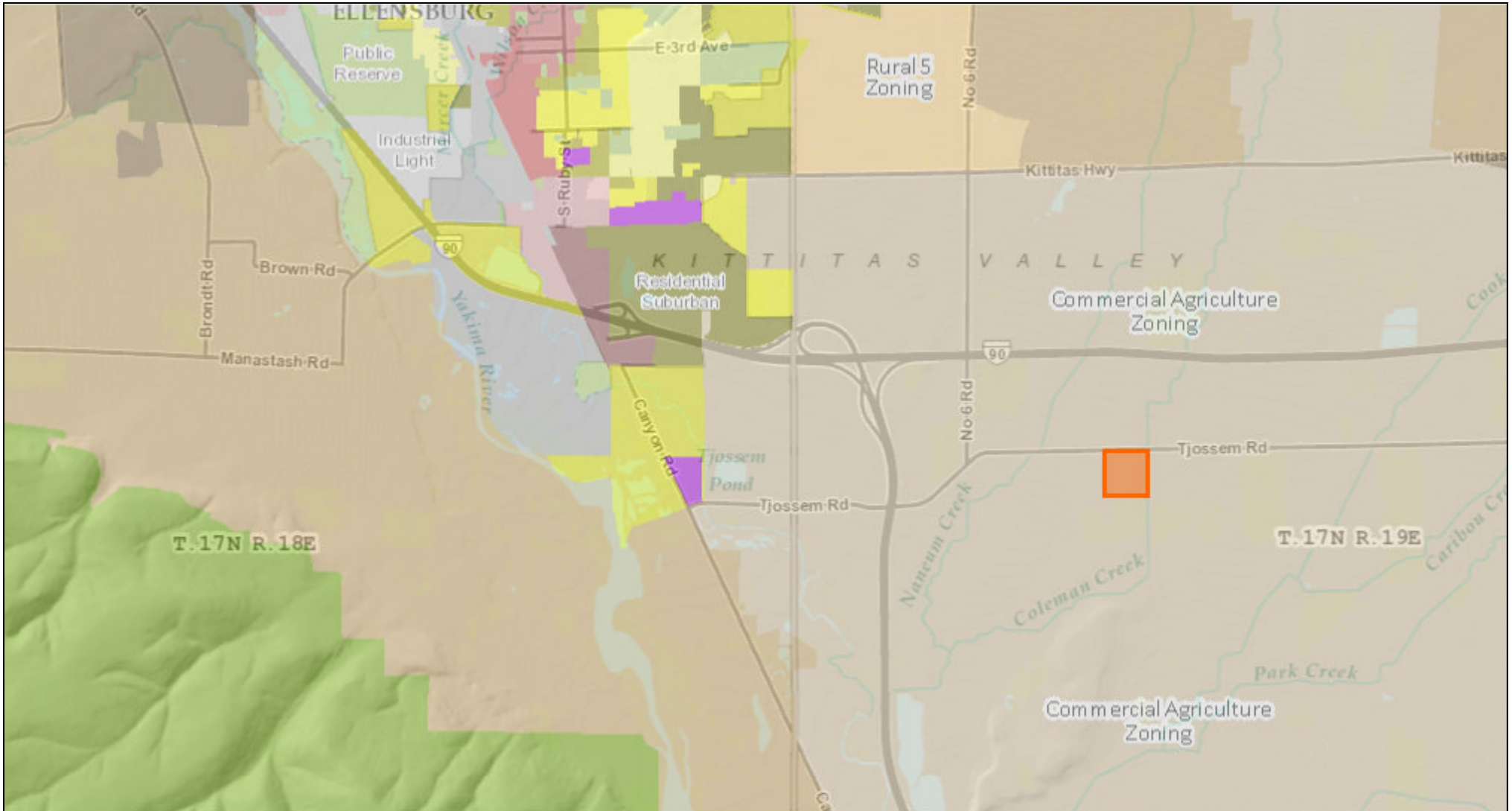
Date: 1/19/2018

1 inch = 6,019 feet
Relative Scale 1:72,224

Disclaimer:
Kittitas County makes every effort to produce and publish the most current and accurate information possible. No warranties, expressed or implied, are provided for the data, its use, or its interpretation. Kittitas County does not guarantee the accuracy of the material contained herein and is not responsible for any use, misuse or representations by others regarding this information or its derivatives.



Penstemon - Zoning - Commercial Ag



Date: 1/19/2018

1 inch = 6,019 feet
Relative Scale 1:72,224

Disclaimer:
Kittitas County makes every effort to produce and publish the most current and accurate information possible. No warranties, expressed or implied, are provided for the data, its use, or its interpretation. Kittitas County does not guarantee the accuracy of the material contained herein and is not responsible for any use, misuse or representations by others regarding this information or its derivatives.



Penstemon Aerial Image

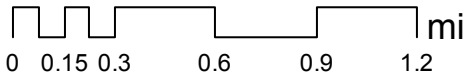


Date: 2/1/2018

1 inch = 3,009 feet
Relative Scale 1:36,112

Disclaimer:

Kittitas County makes every effort to produce and publish the most current and accurate information possible. No warranties, expressed or implied, are provided for the data, its use, or its interpretation. Kittitas County does not guarantee the accuracy of the material contained herein and is not responsible for any use, misuse or representations by others regarding this information or its derivatives.



Penstemon Aerial Image



Date: 2/1/2018

1 inch = 1,505 feet
Relative Scale 1:18,056

Disclaimer:
Kittitas County makes every effort to produce and publish the most current and accurate information possible. No warranties, expressed or implied, are provided for the data, its use, or its interpretation. Kittitas County does not guarantee the accuracy of the material contained herein and is not responsible for any use, misuse or representations by others regarding this information or its derivatives.

