

Operations Fire Control Plan

Columbia Solar Projects

TE - Camas Solar Project

February 2022

TABLE OF CONTENTS

CAMAS SOLAR PROJECT

Operations Fire Control Plan

1.0 Introduction..... 3

2.0 Project Description 3

3.0 Procedures for Preventing Fires 3

4.0 Access to Site 4

5.0 Reporting..... 4

1.0 Introduction

Greenbacker Renewable Energy Corporation (the “Certificate Holder” or “GB”) has constructed the Camas Project (the “Project”), a 5 MW solar facility in Kittitas County. GB has developed this Fire Control Plan in accordance with the Site Certification Agreement. GB has development this Fire Control Plan for use during the operational phase of the project.

Fire Protection Services.

The Project is located within the boundaries of Kittitas Valley Fire and Rescue (KVFR). This plan has been reviewed and approved by KVFR, as shown in the appendix.

Fire Control Plan.

The Certificate Holder shall implement this Fire Control Plan in coordination with state and local agencies to minimize risk of accidental fire during operations and to ensure effective response to any fire that does occur on the Project site. The Certificate Holder shall submit the Fire Control Plan to EFSEC for review at least (60) days prior to Commercial Operations. The Certificate Holder shall not begin Commercial Operations prior to obtaining Council approval of the Fire Control Plan.

This plan has been developed through consultation with WDFW, and in coordination with other state and local agencies to minimize the risk of accidental fire during operation and ensure effective response to any fire that does occur. A copy of this plan has been provided to the local Emergency Services, including Kittitas Valley Fire & Rescue, Kittitas County Sheriff’s Department, and other services listed on page 5, both to apprise them of the operational phase of this facility and to enable them to formulate their own response plan. The local Emergency Services have been invited to visit and make their own assessment of the site, which we will continue to facilitate as additional requests arise.

2.0 Project Description

The Project is comprised of north-south oriented rows of solar modules, mounted on a single-axis tracking system. The electrical collection and inverter system that aggregates the output from the PV panels and converts the electricity from direct current (DC) to alternating current (AC) have a direct interconnection with the existing PSE line. The Project is surrounded by a security fence and a single access gate at 2100 Tjossem Road.

3.0 Procedures for Preventing Fires

In order to minimize this risk the following measures have been established:

- No Open Fires – no exceptions.

- Portable Fire Extinguishers – Employees and Contractors shall have both dry chemical and pressurized water extinguishers on when working within the security fencing area.
- No Smoking – in compliance with the site safety plan, except in designated areas or vehicles.
- Portable Gas Powered Equipment – will not be operated on any dry vegetated areas and will be fitted with spark arrestors in the exhaust system.
- Electrical Fires – areas around installed electrical equipment (inverters, transformers, switchgear, junction boxes, etc.) have been graveled with no vegetation according to best practices.
- Fire Safety Equipment Inspections – Fire safety equipment shall be inspected in accordance with OSHA and WISHA requirements.
- Garbage – all garbage will be disposed of in suitable containers.
- Vehicles shall avoid tall and dry vegetation to avoid potential sparks.

4.0 Access to Site

The Project will have one access point off Tjossem Road that leads to a 12' access road. KVFR will be provided with the appropriate codes to access the gate 24 hours a day.

5.0 Reporting

Any fires or emergencies will be reported per the Operations Emergency Response Plan.

Summary of Emergency Services for Camas Solar Project

All Emergency Services – Dial 911

Kittcom - Processes all emergency 911 calls
Director Darlene Mainwaring
700 Elm View Road, Ellensburg, WA 98926
Administrative number 509-925-8534

Kittitas Valley Fire & Rescue **Dial 911**
Chief John Sinclair
(Fire and Paramedic response)
400 East Mountain View, Ellensburg, WA 98926
Administrative number 509-933-7231

Kittitas County Sheriff’s Department **Dial 911**
Sheriff Clayton Myers
307 W. Umptanum Road, Ellensburg, WA 98926
Kittitas County Public Safety Building, Suite 1
(509) 925-7525 administrative number

Ellensburg Police Department
Chief Ken Wade
100 N. Pearl St. Ellensburg, WA 98926 **Dial 911**
(509) 962-7280 administrative number

Kittitas Valley Healthcare Hospital
Nearest 24/7 Hospital with ER capability that
can be reached within 15–20minutes by car.
603 S. Chestnut St., Ellensburg, WA 98926
(509) 962-9841

Harborview Medical Center
Nearest Hospital for head injuries, sever burns and serious trauma
325 Ninth Avenue, Seattle, WA 98104-2420
Dial (206) 731 3000
<https://www.uwmedicine.org/Facilities/Harborview>

Company Doctor TBA

Spill Reports - National Response Center: Dial (800) 424-8802

Spill Reports - Washington State: Dial (800) 645-7911
or (800) OILS 911

Other Useful Contacts:

Center for Disease Control (CDC) <http://www.cdc.gov/>

Department of Health (DOH) <http://www.doh.wa.gov/>

Department of Homeland Security <http://www.dhs.gov/dhspublic/>

Federal Bureau of Investigation (FBI) <http://www.fbi.gov/>

United States Postal Service <http://www.usps.com/>

Federal Emergency Management Agency (FEMA) <http://www.fema.gov/>

Occupational Safety & Health Administration (OSHA) <http://www.osha.gov/>

Washington Industrial Safety & Health Act (WISHA)
<http://www.lni.wa.gov/Safety/default.asp>

Environmental Protection Agency <http://www.epa.gov/>

Washington Environmental protection Agency <http://www.epa.wa.gov.au/>

National Response Center to report Toxic Chemical & Oil Spills
<http://www.nrc.uscg.mil/nrcrptxt.htm>
or Dial 1-800 424 8802

Poisons Center: <http://uuhsc.utah.edu/healthinfo/adult/nontrauma/overview.htm>
or Dial 1-800 222 1222

EFSEC: <http://www.efsec.wa.gov/>
or Dial: 360-956-2121

Note: Immediately after dealing with the immediate crisis the GB representative at (888) 570-6952 shall be notified and informed of the nature of the emergency.

**Camas Solar Project
Fire Control Plan**

How to Deal With an Emergency Situation

Use these notes in case of injury, illness or fire, and also in case of evacuation.

***** ALWAYS KNOW YOUR LOCATION *****

In case of INJURY or ILLNESS:

1. Call 911. Give location of the emergency and describe the injury or illness.
2. Notify a GB supervisor and your immediate Supervisor. All supervisors carry a cell phone and/or a two-way radio. Describe the emergency to the supervisor.

GB Project Manager:

Meg Taylor

Phone #

(802) 498-4333

3. You (or supervisor) go with the casualty to the hospital.

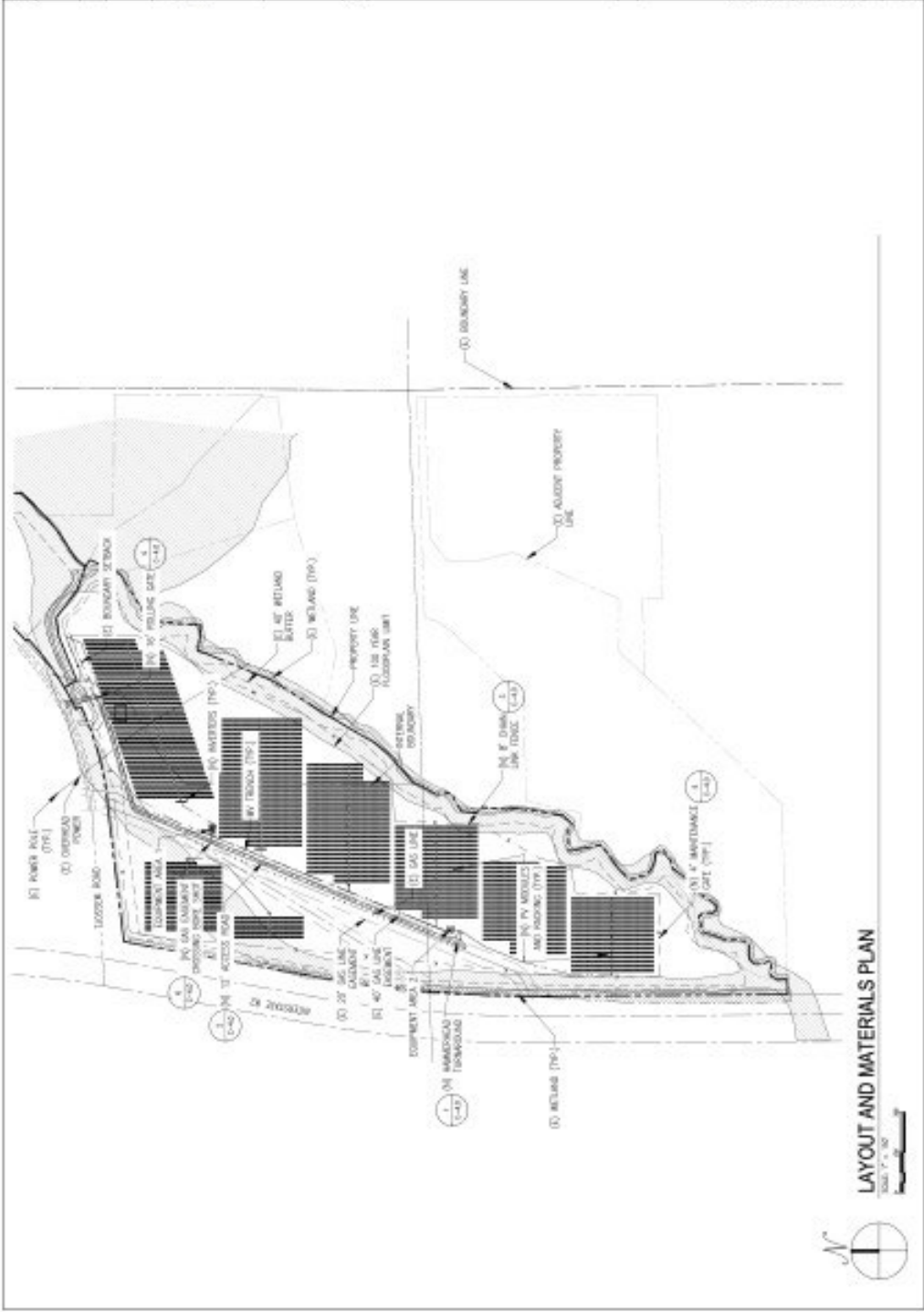
In case of FIRE:

1. Call the fire department by dialing 911 and give the location of the fire.
1. Notify supervisors (as above).
2. Immediately clear the area of all personnel and, if possible, vehicles and flammables. If you are trained in fire safety, and the fire is small, attempt to put the fire out with an extinguisher. **DO NOT PUT YOURSELF AT RISK.**
4. Await the arrival of the fire department.

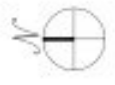
In case of SEVERE or EXTREME WEATHER, ACTS OF SABOTAGE or TERRORISM or MAJOR INCIDENT:

1. Prepare to evacuate the site. Supervisors will initiate and coordinate the evacuation. FOLLOW THEIR INSTRUCTIONS.

In any emergency situation, keep calm and don't panic. Give clear, concise information and directions. The attached map shows the layout of the roads and turbines on the wind project, and your nearest emergency site exit and assembly point.



LAYOUT AND MATERIALS PLAN
 SCALE: 1" = 30'
 DATE: 12/15/2023



C-3.0
 SHEET NO. 023-000000-00