

---

**From:** joie winnick <joiewinnick@earthlink.net>  
**Sent:** Thursday, December 05, 2013 6:37 PM  
**To:** EFSEC (UTC)  
**Subject:** Reference Application No. 2013-01/Docket No. EF-131590: Please reject the proposed Tesoro Savage oil export terminal project

Dear Governor Inslee and Washington EFSEC:

I urge you to assess the full impact of Tesoro Savage's proposal to ship 360,000 barrels of oil each day through Spokane, the Columbia River Gorge National Scenic Area, Vancouver and the Columbia River. Oil-by-rail and export by ship is a bad deal for Washington State and the entire Northwest region. The project comes at a steep price for rail and river communities throughout the state and along the Columbia River, yet offers few jobs in return. Based on the far reaching impacts of this project, I urge you to deny Tesoro Savage's unprecedented proposal.

The public safety and environmental impacts of the state's largest pipeline-on-wheels proposal deserve close scrutiny. For example, EFSEC must assess:

- The potential impacts of a large train-related oil spill along the rail route in Washington and beyond.
- The transportation and public health impacts of additional unit train traffic through communities along the proposed oil-by-rail route. This includes evaluating emergency response capabilities in Vancouver, where oil trains would deliver and store oil, and other communities along the rail and shipping route.
- The increased risk of an oil tanker spill on Washington State waters and along the shipping route.
- The project's impact on climate change. This analysis should include climate change impacts from crude oil as well as tar sands oil from cradle to grave.

After carefully considering the safety, environmental, and climate risks associated with the project, I respectfully ask you to deny Tesoro Savage's application.

Thank you.

joie winnick

91423

**UTC)**

---

**From:** Maida Zamoff <1mzamoff@gmail.com>  
**Sent:** Tuesday, December 10, 2013 8:24 AM  
**To:** EFSEC (UTC)  
**Subject:** Reference Application No. 2013-01/Docket No. EF-131590: Please reject the proposed Tesoro Savage oil export terminal project

Dear Governor Inslee and Washington EFSEC:

I urge you to assess the full impact of Tesoro Savage's proposal to ship 360,000 barrels of oil each day through Spokane, the Columbia River Gorge National Scenic Area, Vancouver and the Columbia River. Oil-by-rail and export by ship is a bad deal for Washington State and the entire Northwest region. The project comes at a steep price for rail and river communities throughout the state and along the Columbia River, yet offers few jobs in return. Based on the far reaching impacts of this project, I urge you to deny Tesoro Savage's unprecedented proposal.

The public safety and environmental impacts of the state's largest pipeline-on-wheels proposal deserve close scrutiny. For example, EFSEC must assess:

- The potential impacts of a large train-related oil spill along the rail route in Washington and beyond.
- The transportation and public health impacts of additional unit train traffic through communities along the proposed oil-by-rail route. This includes evaluating emergency response capabilities in Vancouver, where oil trains would deliver and store oil, and other communities along the rail and shipping route.
- The increased risk of an oil tanker spill on Washington State waters and along the shipping route.
- The project's impact on climate change. This analysis should include climate change impacts from crude oil as well as tar sands oil from cradle to grave.

After carefully considering the safety, environmental, and climate risks associated with the project, I respectfully ask you to deny Tesoro Savage's application.

Thank you.

Maida Zamoff

20016

---

**From:** jasonainaire@savageservices.com  
**Sent:** Tuesday, December 10, 2013 11:47 AM  
**To:** EFSEC (UTC)  
**Subject:** Tesoro Savage Vancouver Energy Distribution Terminal

Dear EFSEC Commissioners

I am a Savage employee and am writing in support of the Tesoro Savage Vancouver Energy Distribution Terminal. As a Savage employee, I stand behind the company's commitment to safety and the environment. I have firsthand experience how important clean, efficient and safe operations are to Savage. A terminal run by Savage in Vancouver will bring the community jobs like mine. And I'm proud to say I work for this company, and I'm also proud of our impressive track record of integrity and social responsibility.

This terminal will also contribute to energy independence in the United States. I work in the Savage operation in North Dakota and know the market demand for moving crude oil to West Coast refineries. This terminal will make the transportation of crude oil from the Bakken and other regions more accessible and reduce the amount of crude US refineries are currently forced to purchase from international sources. By allowing US crude to move through a US terminal to US refineries, Savage and Tesoro are supporting US energy independence and creating US jobs.

I urge the committee to keep site of the positive impact this terminal will have on the US economy. As a Savage employee and an American job holder, my family depends on the strength of the oil and gas market in the US. To keep this project moving forward on a schedule that will allow for its timely approval, please keep the scope of the SEPA environmental analysis purposefully focused on potential impacts from the proposed facility. The scope of the EIS must be limited to those potential impacts directly related to the facility design and operation. I ask that EFSEC consider the following site-specific impacts in preparation of the SEPA Environmental Impact Statement:

- Spill prevention and spill response requirements that protect the environment
- Ability to comply with state and federal air quality emission standards
- Impact of the facility on local transportation infrastructure and public services
- Facility design that meets all relevant safety standards

I am concerned that conducting a SEPA EIS that looks beyond site-based facility impacts is an overreach that could dilute the core focus on this facility. This balanced approach is consistent with Washington's SEPA statutes and regulations and will protect the environment while also ensuring the state's ability to grow its economy.

I have been an employee with Savage for 14 years. Originally I was from the Maine terminal where the EPA and state laws were very strict. Savage always went above and beyond to verify all areas were managed in a safe and clean manner.

Thank you for considering my comments.

Sincerely,  
Jason Ainaire

**From:** Douglas Fairweather <siamdoug@yahoo.com>  
**Sent:** Tuesday, December 10, 2013 11:51 AM  
**To:** EFSEC (UTC)  
**Subject:** Reference Application No. 2013-01/Docket No. EF-131590: Please reject the proposed Tesoro Savage oil export terminal project

Dear Governor Inslee and Washington EFSEC:

I urge you to assess the full impact of Tesoro Savage's proposal to ship 360,000 barrels of oil each day through Spokane, the Columbia River Gorge National Scenic Area, Vancouver and the Columbia River. Oil-by-rail and export by ship is a bad deal for Washington State and the entire Northwest region. The project comes at a steep price for rail and river communities throughout the state and along the Columbia River, yet offers few jobs in return. Based on the far reaching impacts of this project, I urge you to deny Tesoro Savage's unprecedented proposal.

The public safety and environmental impacts of the state's largest pipeline-on-wheels proposal deserve close scrutiny. For example, EFSEC must assess:

- The potential impacts of a large train-related oil spill along the rail route in Washington and beyond.
- The transportation and public health impacts of additional unit train traffic through communities along the proposed oil-by-rail route. This includes evaluating emergency response capabilities in Vancouver, where oil trains would deliver and store oil, and other communities along the rail and shipping route.
- The increased risk of an oil tanker spill on Washington State waters and along the shipping route.
- The project's impact on climate change. This analysis should include climate change impacts from crude oil as well as tar sands oil from cradle to grave.

After carefully considering the safety, environmental, and climate risks associated with the project, I respectfully ask you to deny Tesoro Savage's application.

Thank you.

Douglas Fairweather

80550

UTC)

---

**From:** Janiece Staton <ms.jdstaton@frontier.com>  
**Sent:** Tuesday, December 10, 2013 11:57 AM  
**To:** EFSEC (UTC)  
**Subject:** Reference Application No. 2013-01/Docket No. EF-131590: Please reject the proposed Tesoro Savage oil export terminal project

Dear Governor Inslee and Washington EFSEC:

I urge you to assess the full impact of Tesoro Savage's proposal to ship 360,000 barrels of oil each day through Spokane, the Columbia River Gorge National Scenic Area, Vancouver and the Columbia River. Oil-by-rail and export by ship is a bad deal for Washington State and the entire Northwest region. The project comes at a steep price for rail and river communities throughout the state and along the Columbia River, yet offers few jobs in return. Based on the far reaching impacts of this project, I urge you to deny Tesoro Savage's unprecedented proposal.

The public safety and environmental impacts of the state's largest pipeline-on-wheels proposal deserve close scrutiny. For example, EFSEC must assess:

- The potential impacts of a large train-related oil spill along the rail route in Washington and beyond.
- The transportation and public health impacts of additional unit train traffic through communities along the proposed oil-by-rail route. This includes evaluating emergency response capabilities in Vancouver, where oil trains would deliver and store oil, and other communities along the rail and shipping route.
- The increased risk of an oil tanker spill on Washington State waters and along the shipping route.
- The project's impact on climate change. This analysis should include climate change impacts from crude oil as well as tar sands oil from cradle to grave.

After carefully considering the safety, environmental, and climate risks associated with the project, I respectfully ask you to deny Tesoro Savage's application.

Thank you.

Janiece Staton

97006

JTC)

---

**From:** Greg Cercy <gnubayonne-mail@yahoo.com>  
**Sent:** Tuesday, December 10, 2013 12:02 PM  
**To:** EFSEC (UTC)  
**Subject:** Reference Application No. 2013-01/Docket No. EF-131590: Please reject the proposed Tesoro Savage oil export terminal project

Dear Governor Inslee and Washington EFSEC:

I urge you to assess the full impact of Tesoro Savage's proposal to ship 360,000 barrels of oil each day through Spokane, the Columbia River Gorge National Scenic Area, Vancouver and the Columbia River. Oil-by-rail and export by ship is a bad deal for Washington State and the entire Northwest region. The project comes at a steep price for rail and river communities throughout the state and along the Columbia River, yet offers few jobs in return. Based on the far reaching impacts of this project, I urge you to deny Tesoro Savage's unprecedented proposal.

The public safety and environmental impacts of the state's largest pipeline-on-wheels proposal deserve close scrutiny. For example, EFSEC must assess:

- The potential impacts of a large train-related oil spill along the rail route in Washington and beyond.
- The transportation and public health impacts of additional unit train traffic through communities along the proposed oil-by-rail route. This includes evaluating emergency response capabilities in Vancouver, where oil trains would deliver and store oil, and other communities along the rail and shipping route.
- The increased risk of an oil tanker spill on Washington State waters and along the shipping route.
- The project's impact on climate change. This analysis should include climate change impacts from crude oil as well as tar sands oil from cradle to grave.

After carefully considering the safety, environmental, and climate risks associated with the project, I respectfully ask you to deny Tesoro Savage's application.

Thank you.

Greg Cercy

32837

**(UTC)**

---

**From:** jesse shankle <jesseshankle@gmail.com>  
**Sent:** Tuesday, December 10, 2013 12:05 PM  
**To:** EFSEC (UTC)  
**Subject:** Reference Application No. 2013-01/Docket No. EF-131590: Please reject the proposed Tesoro Savage oil export terminal project

Dear Governor Inslee and Washington EFSEC:

I urge you to assess the full impact of Tesoro Savage's proposal to ship 360,000 barrels of oil each day through Spokane, the Columbia River Gorge National Scenic Area, Vancouver and the Columbia River. Oil-by-rail and export by ship is a bad deal for Washington State and the entire Northwest region. The project comes at a steep price for rail and river communities throughout the state and along the Columbia River, yet offers few jobs in return. Based on the far reaching impacts of this project, I urge you to deny Tesoro Savage's unprecedented proposal.

The public safety and environmental impacts of the state's largest pipeline-on-wheels proposal deserve close scrutiny. For example, EFSEC must assess:

- The potential impacts of a large train-related oil spill along the rail route in Washington and beyond.
- The transportation and public health impacts of additional unit train traffic through communities along the proposed oil-by-rail route. This includes evaluating emergency response capabilities in Vancouver, where oil trains would deliver and store oil, and other communities along the rail and shipping route.
- The increased risk of an oil tanker spill on Washington State waters and along the shipping route.
- The project's impact on climate change. This analysis should include climate change impacts from crude oil as well as tar sands oil from cradle to grave.

After carefully considering the safety, environmental, and climate risks associated with the project, I respectfully ask you to deny Tesoro Savage's application.

Thank you.

jesse shankle

99224

**UTC)**

---

**From:** John Rothlisberger <rothlisberger.john@gmail.com>  
**Sent:** Tuesday, December 10, 2013 12:06 PM  
**To:** EFSEC (UTC)  
**Subject:** Oil Terminal Concerns

1. The potential for air, soil, & river pollution from the process of emptying tank cars and preparing them for return trips.
2. New tank cars do not have frames; the wheel-truck assemblies are welded to the tank itself; any derailment could rupture the tank.
3. BNSF tracks are directly adjacent to miles of the Columbia River; any spills would ruin miles of shoreline. There are already coal-dust and "nuggets" along the tracks.
4. Increased train traffic through residential areas all along the route, at all hours.
5. Increased freight train volume limits potential for more AMTRAK rail schedules.

--

*John Rothlisberger  
3020 SE Silver Springs Drive  
Vancouver, WA 98683*



**UTC)**

---

**From:** Lindsay Daitch <daitch.lin@gmail.com>  
**Sent:** Tuesday, December 10, 2013 12:09 PM  
**To:** EFSEC (UTC)  
**Subject:** Reference Application No. 2013-01/Docket No. EF-131590: Please reject the proposed Tesoro Savage oil export terminal project

Dear Governor Inslee and Washington EFSEC:

I urge you to assess the full impact of Tesoro Savage's proposal to ship 360,000 barrels of oil each day through Spokane, the Columbia River Gorge National Scenic Area, Vancouver and the Columbia River. Oil-by-rail and export by ship is a bad deal for Washington State and the entire Northwest region. The project comes at a steep price for rail and river communities throughout the state and along the Columbia River, yet offers few jobs in return. Based on the far reaching impacts of this project, I urge you to deny Tesoro Savage's unprecedented proposal.

The public safety and environmental impacts of the state's largest pipeline-on-wheels proposal deserve close scrutiny. For example, EFSEC must assess:

- The potential impacts of a large train-related oil spill along the rail route in Washington and beyond.
- The transportation and public health impacts of additional unit train traffic through communities along the proposed oil-by-rail route. This includes evaluating emergency response capabilities in Vancouver, where oil trains would deliver and store oil, and other communities along the rail and shipping route.
- The increased risk of an oil tanker spill on Washington State waters and along the shipping route.
- The project's impact on climate change. This analysis should include climate change impacts from crude oil as well as tar sands oil from cradle to grave.

After carefully considering the safety, environmental, and climate risks associated with the project, I respectfully ask you to deny Tesoro Savage's application.

Thank you.

Lindsay Daitch

90004

(UTC)

---

**From:** Eleonora Pavlovska <eleonora1402@inbox.lv>  
**Sent:** Tuesday, December 10, 2013 12:22 PM  
**To:** EFSEC (UTC)  
**Subject:** Reference Application No. 2013-01/Docket No. EF-131590: Please reject the proposed Tesoro Savage oil export terminal project

Dear Governor Inslee and Washington EFSEC:

I urge you to assess the full impact of Tesoro Savage's proposal to ship 360,000 barrels of oil each day through Spokane, the Columbia River Gorge National Scenic Area, Vancouver and the Columbia River. Oil-by-rail and export by ship is a bad deal for Washington State and the entire Northwest region. The project comes at a steep price for rail and river communities throughout the state and along the Columbia River, yet offers few jobs in return. Based on the far reaching impacts of this project, I urge you to deny Tesoro Savage's unprecedented proposal.

The public safety and environmental impacts of the state's largest pipeline-on-wheels proposal deserve close scrutiny. For example, EFSEC must assess:

- The potential impacts of a large train-related oil spill along the rail route in Washington and beyond.
- The transportation and public health impacts of additional unit train traffic through communities along the proposed oil-by-rail route. This includes evaluating emergency response capabilities in Vancouver, where oil trains would deliver and store oil, and other communities along the rail and shipping route.
- The increased risk of an oil tanker spill on Washington State waters and along the shipping route.
- The project's impact on climate change. This analysis should include climate change impacts from crude oil as well as tar sands oil from cradle to grave.

After carefully considering the safety, environmental, and climate risks associated with the project, I respectfully ask you to deny Tesoro Savage's application.

Thank you.

Eleonora Pavlovska

1021

**(UTC)**

---

**From:** jnholkko@nalco.com  
**Sent:** Tuesday, December 10, 2013 12:34 PM  
**To:** EFSEC (UTC)  
**Subject:** Tesoro Savage Vancouver Energy Distribution Terminal

Dear Stephen Posner

I am a resident of Washington and am writing in support of the Tesoro Savage Vancouver Energy Distribution Terminal. The proposed project will receive and ship North American crude oil to US refineries to offset or replace foreign imports and declining production in Alaska and California. This crude oil will be refined in US refineries to help meet the everyday needs of residents and businesses along the US West Coast – including those of the state of Washington. In short, it helps with America's energy security and will bring economic benefits and valuable jobs to our local communities.

As a resident, I believe the safety and environmental reviews are extremely important and will help ensure that this is done safely and responsibly. As such, I would request that the scope of the SEPA environmental analysis be purposefully focused on potential impacts from the proposed facility. The scope of the EIS must be limited to those potential impacts directly related to the facility design and operation. I ask that EFSEC consider the following site-specific impacts in preparation of the SEPA Environmental Impact Statement:

- Risks caused by earthquakes
- Spill prevention and spill response requirements that protect the environment
- Ability to comply with state and federal air quality emission standards
- Protection of Columbia River water quality and fish and wildlife resources
- Impact of the facility on local transportation infrastructure and public services
- Facility design that meets all relevant safety standards

I am concerned that conducting a SEPA EIS that looks beyond site-based facility impacts is an overreach that could dilute the core focus on this facility and have a dampening effect on transportation of other commodities, such as agricultural products, which are vital to the economies of Vancouver, Clark County and the state of Washington.

This balanced approach is consistent with SEPA statutes and regulations and will protect the environment while also ensuring the state's ability to grow its economy. Thank you for considering my comments.

Sincerely,  
Jennifer Holkko

**UTC)**

---

**From:** Yvonne Winstanley <ywinstan@gmail.com>  
**Sent:** Tuesday, December 10, 2013 12:45 PM  
**To:** EFSEC (UTC)  
**Subject:** Fwd: No oil terminal near Vancouver

Begin forwarded message:

**From:** Yvonne Winstanley <ywinstan@gmail.com>  
**Subject:** No oil terminal near Vancouver  
**Date:** December 10, 2013 10:26:46 AM PST  
**To:** [sec@utc.wa.gov](mailto:sec@utc.wa.gov)  
**Cc:** [aaron.corvin@columbian.com](mailto:aaron.corvin@columbian.com)

I live near the river and see the oil cars go by. The tanks are just unreinforced cylinders resting on a minimal framework. If derailed, they would split easily and spew toxic material into the river and surrounding areas. Vancouver doesn't need the few (and highly overestimated) jobs the oil companies claim it would provide. I have also been to Louisiana and seen what oil refiners do to the environment. Those photos they use to advertise low environmental impact showing egrets in ponds are gross misrepresentations; they occupy very minuscule portions of a garbage filled and sludgy peninsula. Let them pipe it elsewhere not run it along the Columbia River.

This is NOT what we want here so a few wealthy companies can see huge profits for their out of state headquarters at our expense. We stand to create more good jobs by emphasizing our great livability not by polluting it. Look at the South and East to see what NOT to do.

Concerned citizen,  
Yvonne Winstanley  
Vancouver WA

---

**From:** Sierra Club <information@sierraclub.org> on behalf of Jana Hobbs  
<mjct\_hobbs@msn.com>  
**Sent:** Tuesday, December 10, 2013 12:55 PM  
**To:** EFSEC (UTC)  
**Subject:** Comment on Docket No. EF-131590, Application No. 2013-01

Dec 10, 2013

Mr. Stephen Posner  
P.O. Box 43172  
Olympia, WA 98504-3172

Dear Mr. Posner,

I'm writing regarding Docket No. EF-131590, Application No. 2013-01 to urge the Washington Energy Facility Site Evaluation Council (EFSEC) to assess the full environmental and public safety impact of the joint Tesoro-Savage proposal to turn the Port of Vancouver into a major crude oil export terminal.

If approved, the plan would result in 380,000 barrels of oil each day being shipped through Spokane, the Columbia River Gorge National Scenic Area, Vancouver and other Northwest communities. Oil-by-rail is a bad deal for Washington State. The project comes at a steep price for rail communities and the Columbia River, yet offers few jobs in return. Based on the far reaching impacts of this project, I urge you to recommend the rejection of Tesoro-Savage's proposal.

The public safety and environmental impacts of this proposal deserve close scrutiny. For example, EFSEC must assess:

1) The potential safety and environmental impacts of a large train-related oil spill or explosion along the rail route in Washington and beyond. Recent derailment disasters in Lac-Mégantic, Quebec and Alabama have shown that these risks are far too real. The tragedy in Quebec, in particular, highlighted the extreme danger of the same type of oil and tankers that would be traveling through our communities. Forty-seven people died in that explosion, which also devastated the town.

2) The increased risk of an oil tanker spill on Washington State waters and along the shipping route.

3) The transportation and public health impacts of additional unit train traffic through communities along the proposed oil-by-rail route.

This includes evaluating emergency response capabilities in Vancouver, where oil trains would deliver and store oil, and other communities along the rail and shipping route.

4) The project's impact on climate change. This analysis should include climate change impacts from crude oil as well as tar sands oil from cradle to grave.

5) The impact of the project's cradle-to-grave CO2 emissions on the viability of the large oyster industry in Washington State.

After carefully considering the safety, environmental, and climate risks associated with the proposed oil terminal, I respectfully ask you to recommend the rejection of Tesoro-Savage's application.

Ms. Jana Hobbs  
13506 NE 66th St  
Kirkland, WA 98033-8601  
(425) 869-2370

UTC)

---

**From:** Stephenie Haehnel <slhaehnel@juno.com>  
**Sent:** Tuesday, December 10, 2013 1:12 PM  
**To:** EFSEC (UTC)  
**Subject:** Reference Application No. 2013-01/Docket No. EF-131590: Please reject the proposed Tesoro Savage oil export terminal project

Dear Governor Inslee and Washington EFSEC:

I urge you to assess the full impact of Tesoro Savage's proposal to ship 360,000 barrels of oil each day through Spokane, the Columbia River Gorge National Scenic Area, Vancouver and the Columbia River. Oil-by-rail and export by ship is a bad deal for Washington State and the entire Northwest region. The project comes at a steep price for rail and river communities throughout the state and along the Columbia River, yet offers few jobs in return. Based on the far reaching impacts of this project, I urge you to deny Tesoro Savage's unprecedented proposal.

The public safety and environmental impacts of the state's largest pipeline-on-wheels proposal deserve close scrutiny. For example, EFSEC must assess:

- The potential impacts of a large train-related oil spill along the rail route in Washington and beyond.
- The transportation and public health impacts of additional unit train traffic through communities along the proposed oil-by-rail route. This includes evaluating emergency response capabilities in Vancouver, where oil trains would deliver and store oil, and other communities along the rail and shipping route.
- The increased risk of an oil tanker spill on Washington State waters and along the shipping route.
- The project's impact on climate change. This analysis should include climate change impacts from crude oil as well as tar sands oil from cradle to grave.

After carefully considering the safety, environmental, and climate risks associated with the project, I respectfully ask you to deny Tesoro Savage's application.

Thank you.

Stephenie Haehnel

60177

**(UTC)**

---

**From:** Walt Barlow <wildwaltbarlow@gmail.com>  
**Sent:** Tuesday, December 10, 2013 1:54 PM  
**To:** EFSEC (UTC)  
**Subject:** Reference Application No. 2013-01/Docket No. EF-131590: Please reject the proposed Tesoro Savage oil export terminal project

Dear Governor Inslee and Washington EFSEC:

I urge you to assess the full impact of Tesoro Savage's proposal to ship 360,000 barrels of oil each day through Spokane, the Columbia River Gorge National Scenic Area, Vancouver and the Columbia River. Oil-by-rail and export by ship is a bad deal for Washington State and the entire Northwest region. The project comes at a steep price for rail and river communities throughout the state and along the Columbia River, yet offers few jobs in return. Based on the far reaching impacts of this project, I urge you to deny Tesoro Savage's unprecedented proposal.

The public safety and environmental impacts of the state's largest pipeline-on-wheels proposal deserve close scrutiny. For example, EFSEC must assess:

- The potential impacts of a large train-related oil spill along the rail route in Washington and beyond.
- The transportation and public health impacts of additional unit train traffic through communities along the proposed oil-by-rail route. This includes evaluating emergency response capabilities in Vancouver, where oil trains would deliver and store oil, and other communities along the rail and shipping route.
- The increased risk of an oil tanker spill on Washington State waters and along the shipping route.
- The project's impact on climate change. This analysis should include climate change impacts from crude oil as well as tar sands oil from cradle to grave.

After carefully considering the safety, environmental, and climate risks associated with the project, I respectfully ask you to deny Tesoro Savage's application.

Thank you.

Walt Barlow

40502

**From:** Sierra Club <information@sierraclub.org> on behalf of Linda Gazzola <xenafan431@aol.com>  
**Sent:** Tuesday, December 10, 2013 1:59 PM  
**To:** EFSEC (UTC)  
**Subject:** Comment on Docket No. EF-131590, Application No. 2013-01

Dec 10, 2013

Mr. Stephen Posner  
P.O. Box 43172  
Olympia, WA 98504-3172

Dear Mr. Posner,

I'm writing regarding Docket No. EF-131590, Application No. 2013-01 to urge the Washington Energy Facility Site Evaluation Council (EFSEC) to assess the full environmental and public safety impact of the joint Tesoro-Savage proposal to turn the Port of Vancouver into a major crude oil export terminal.

If approved, the plan would result in 380,000 barrels of oil each day being shipped through Spokane, the Columbia River Gorge National Scenic Area, Vancouver and other Northwest communities. Oil-by-rail is a bad deal for Washington State. The project comes at a steep price for rail communities and the Columbia River, yet offers few jobs in return. Based on the far reaching impacts of this project, I urge you to recommend the rejection of Tesoro-Savage's proposal.

The public safety and environmental impacts of this proposal deserve close scrutiny. For example, EFSEC must assess:

1) The potential safety and environmental impacts of a large train-related oil spill or explosion along the rail route in Washington and beyond. Recent derailment disasters in Lac-Mégantic, Quebec and Alabama have shown that these risks are far too real. The tragedy in Quebec, in particular, highlighted the extreme danger of the same type of oil and tankers that would be traveling through our communities.

Forty-seven people died in that explosion, which also devastated the town.

2) The increased risk of an oil tanker spill on Washington State waters and along the shipping route.

3) The transportation and public health impacts of additional unit train traffic through communities along the proposed oil-by-rail route.

This includes evaluating emergency response capabilities in Vancouver, where oil trains would deliver and store oil, and other communities along the rail and shipping route.

4) The project's impact on climate change. This analysis should include climate change impacts from crude oil as well as tar sands oil from cradle to grave.

5) The impact of the project's cradle-to-grave CO2 emissions on the viability of the large oyster industry in Washington State.

After carefully considering the safety, environmental, and climate risks associated with the proposed oil terminal, I respectfully ask you to recommend the rejection of Tesoro-Savage's application.



**From:** Stephanie Goldbach <tierbefreier-berlin@gmx.de>  
**Sent:** Tuesday, December 10, 2013 2:04 PM  
**To:** EFSEC (UTC)  
**Subject:** Reference Application No. 2013-01/Docket No. EF-131590: Please reject the proposed Tesoro Savage oil export terminal project

Dear Governor Inslee and Washington EFSEC:

I urge you to assess the full impact of Tesoro Savage's proposal to ship 360,000 barrels of oil each day through Spokane, the Columbia River Gorge National Scenic Area, Vancouver and the Columbia River. Oil-by-rail and export by ship is a bad deal for Washington State and the entire Northwest region. The project comes at a steep price for rail and river communities throughout the state and along the Columbia River, yet offers few jobs in return. Based on the far reaching impacts of this project, I urge you to deny Tesoro Savage's unprecedented proposal.

The public safety and environmental impacts of the state's largest pipeline-on-wheels proposal deserve close scrutiny. For example, EFSEC must assess:

- The potential impacts of a large train-related oil spill along the rail route in Washington and beyond.
- The transportation and public health impacts of additional unit train traffic through communities along the proposed oil-by-rail route. This includes evaluating emergency response capabilities in Vancouver, where oil trains would deliver and store oil, and other communities along the rail and shipping route.
- The increased risk of an oil tanker spill on Washington State waters and along the shipping route.
- The project's impact on climate change. This analysis should include climate change impacts from crude oil as well as tar sands oil from cradle to grave.

After carefully considering the safety, environmental, and climate risks associated with the project, I respectfully ask you to deny Tesoro Savage's application.

Thank you.

Stephanie Goldbach

10629

**From:** Kim Perszyk <kimpersz@gmail.com>  
**Sent:** Tuesday, December 10, 2013 2:15 PM  
**To:** EFSEC (UTC)  
**Subject:** Reference Application No. 2013-01/Docket No. EF-131590: Please reject the proposed Tesoro Savage oil export terminal project

Dear Governor Inslee and Washington EFSEC:

I urge you to assess the full impact of Tesoro Savage's proposal to ship 360,000 barrels of oil each day through Spokane, the Columbia River Gorge National Scenic Area, Vancouver and the Columbia River. Oil-by-rail and export by ship is a bad deal for Washington State and the entire Northwest region. The project comes at a steep price for rail and river communities throughout the state and along the Columbia River, yet offers few jobs in return. Based on the far reaching impacts of this project, I urge you to deny Tesoro Savage's unprecedented proposal.

The public safety and environmental impacts of the state's largest pipeline-on-wheels proposal deserve close scrutiny. For example, EFSEC must assess:

- The potential impacts of a large train-related oil spill along the rail route in Washington and beyond.
- The transportation and public health impacts of additional unit train traffic through communities along the proposed oil-by-rail route. This includes evaluating emergency response capabilities in Vancouver, where oil trains would deliver and store oil, and other communities along the rail and shipping route.
- The increased risk of an oil tanker spill on Washington State waters and along the shipping route.
- The project's impact on climate change. This analysis should include climate change impacts from crude oil as well as tar sands oil from cradle to grave.

After carefully considering the safety, environmental, and climate risks associated with the project, I respectfully ask you to deny Tesoro Savage's application.

Thank you.

Kim Perszyk

92102

**From:** gladys catterton <gladycat@comcast.net>  
**Sent:** Tuesday, December 10, 2013 2:16 PM  
**To:** EFSEC (UTC)  
**Subject:** Reference Application No. 2013-01/Docket No. EF-131590: Please reject the proposed Tesoro Savage oil export terminal project

Dear Governor Inslee and Washington EFSEC:

I urge you to assess the full impact of Tesoro Savage's proposal to ship 360,000 barrels of oil each day through Spokane, the Columbia River Gorge National Scenic Area, Vancouver and the Columbia River. Oil-by-rail and export by ship is a bad deal for Washington State and the entire Northwest region. The project comes at a steep price for rail and river communities throughout the state and along the Columbia River, yet offers few jobs in return. Based on the far reaching impacts of this project, I urge you to deny Tesoro Savage's unprecedented proposal.

The public safety and environmental impacts of the state's largest pipeline-on-wheels proposal deserve close scrutiny. For example, EFSEC must assess:

- The potential impacts of a large train-related oil spill along the rail route in Washington and beyond.
- The transportation and public health impacts of additional unit train traffic through communities along the proposed oil-by-rail route. This includes evaluating emergency response capabilities in Vancouver, where oil trains would deliver and store oil, and other communities along the rail and shipping route.
- The increased risk of an oil tanker spill on Washington State waters and along the shipping route.
- The project's impact on climate change. This analysis should include climate change impacts from crude oil as well as tar sands oil from cradle to grave.

After carefully considering the safety, environmental, and climate risks associated with the project, I respectfully ask you to deny Tesoro Savage's application.

Thank you.

gladys catterton

01845

**From:** Maria-Viktoria Abricka <Abricka@LongstrethAssociates.com>  
**Sent:** Tuesday, December 10, 2013 2:19 PM  
**To:** EFSEC (UTC)  
**Subject:** Reference Application No. 2013-01/Docket No. EF-131590: Please reject the proposed Tesoro Savage oil export terminal project

Dear Governor Inslee and Washington EFSEC:

I urge you to assess the full impact of Tesoro Savage's proposal to ship 360,000 barrels of oil each day through Spokane, the Columbia River Gorge National Scenic Area, Vancouver and the Columbia River. Oil-by-rail and export by ship is a bad deal for Washington State and the entire Northwest region. The project comes at a steep price for rail and river communities throughout the state and along the Columbia River, yet offers few jobs in return. Based on the far reaching impacts of this project, I urge you to deny Tesoro Savage's unprecedented proposal.

The public safety and environmental impacts of the state's largest pipeline-on-wheels proposal deserve close scrutiny. For example, EFSEC must assess:

- The potential impacts of a large train-related oil spill along the rail route in Washington and beyond.
- The transportation and public health impacts of additional unit train traffic through communities along the proposed oil-by-rail route. This includes evaluating emergency response capabilities in Vancouver, where oil trains would deliver and store oil, and other communities along the rail and shipping route.
- The increased risk of an oil tanker spill on Washington State waters and along the shipping route.
- The project's impact on climate change. This analysis should include climate change impacts from crude oil as well as tar sands oil from cradle to grave.

After carefully considering the safety, environmental, and climate risks associated with the project, I respectfully ask you to deny Tesoro Savage's application.

Thank you.

Maria-Viktoria Abricka

60060

---

**From:** Carol Joan Patterson <joanie.patterson@yahoo.com>  
**Sent:** Tuesday, December 10, 2013 2:21 PM  
**To:** EFSEC (UTC)  
**Subject:** Reference Application No. 2013-01/Docket No. EF-131590: Please reject the proposed Tesoro Savage oil export terminal project

Dear Governor Inslee and Washington EFSEC:

I urge you to assess the full impact of Tesoro Savage's proposal to ship 360,000 barrels of oil each day through Spokane, the Columbia River Gorge National Scenic Area, Vancouver and the Columbia River. Oil-by-rail and export by ship is a bad deal for Washington State and the entire Northwest region. The project comes at a steep price for rail and river communities throughout the state and along the Columbia River, yet offers few jobs in return. Based on the far reaching impacts of this project, I urge you to deny Tesoro Savage's unprecedented proposal.

The public safety and environmental impacts of the state's largest pipeline-on-wheels proposal deserve close scrutiny. For example, EFSEC must assess:

- The potential impacts of a large train-related oil spill along the rail route in Washington and beyond.
- The transportation and public health impacts of additional unit train traffic through communities along the proposed oil-by-rail route. This includes evaluating emergency response capabilities in Vancouver, where oil trains would deliver and store oil, and other communities along the rail and shipping route.
- The increased risk of an oil tanker spill on Washington State waters and along the shipping route.
- The project's impact on climate change. This analysis should include climate change impacts from crude oil as well as tar sands oil from cradle to grave.

After carefully considering the safety, environmental, and climate risks associated with the project, I respectfully ask you to deny Tesoro Savage's application.

Thank you.

Carol Joan Patterson

72632

UTC)

---

**From:** sumit.roy@tsocorp.com  
**Sent:** Tuesday, December 10, 2013 2:23 PM  
**To:** EFSEC (UTC)  
**Subject:** Tesoro Savage Vancouver Energy Distribution Terminal

Dear EFSEC Commissioners

I am a Tesoro employee from Texas and am writing in support of the Tesoro Savage Vancouver Energy Distribution Terminal. As a Tesoro employee, I stand behind the company's commitment to safety and the environment. I have firsthand experience of how important safe, clean, and efficient operations are to Tesoro.

This terminal will also contribute to energy independence in the United States. Because of my job, I understand the market demand for moving crude oil to West Coast refineries. This terminal will make the transportation of crude oil from the Bakken and other regions more accessible and reduce the amount of crude U.S. refineries are currently forced to purchase from international sources. By allowing U.S. crude to move through a U.S. terminal to U.S. refineries, Tesoro and Savage are supporting U.S. energy independence and creating U.S. jobs.

I urge the committee to bear in mind the positive impact this terminal will have on the U.S. economy. As a Tesoro employee and an American job holder, my family depends on the strength of the oil and gas industry in the U.S. To keep this project moving forward on a schedule that will allow for its timely approval, please keep the scope of the SEPA environmental analysis purposefully focused on potential impacts from the proposed facility. The scope of the EIS must be limited to those potential impacts directly related to the facility design and operation. I ask that EFSEC consider the following site-specific impacts in preparation of the SEPA Environmental Impact Statement:

- Spill prevention and spill response requirements that protect the environment
- Ability to comply with state and federal air quality emission standards
- Impact of the facility on local transportation infrastructure and public services
- Facility design that meets all relevant safety standards

I am concerned that conducting a SEPA EIS that looks beyond site-based facility impacts is an overreach that could dilute the core focus on this facility. This balanced approach is consistent with Washington's SEPA statutes and regulations and will protect the environment while also ensuring the state's ability to grow its economy.

Thank you for considering my comments.

Sincerely,  
Sumit Roy

**UTC)**

---

**From:** helio.alvarez@tsocorp.com  
**Sent:** Tuesday, December 10, 2013 2:27 PM  
**To:** EFSEC (UTC)  
**Subject:** Tesoro Savage Vancouver Energy Distribution Terminal

Dear EFSEC Commissioners

I am a Tesoro employee from California and am writing in support of the Tesoro Savage Vancouver Energy Distribution Terminal. As a Tesoro employee, I stand behind the company's commitment to safety and the environment. I have firsthand experience of how important safe, clean, and efficient operations are to Tesoro.

This terminal will also contribute to energy independence in the United States. Because of my job, I understand the market demand for moving crude oil to West Coast refineries. This terminal will make the transportation of crude oil from the Bakken and other regions more accessible and reduce the amount of crude U.S. refineries are currently forced to purchase from international sources. By allowing U.S. crude to move through a U.S. terminal to U.S. refineries, Tesoro and Savage are supporting U.S. energy independence and creating U.S. jobs.

I urge the committee to bear in mind the positive impact this terminal will have on the U.S. economy. As a Tesoro employee and an American job holder, my family depends on the strength of the oil and gas industry in the U.S. To keep this project moving forward on a schedule that will allow for its timely approval, please keep the scope of the SEPA environmental analysis purposefully focused on potential impacts from the proposed facility. The scope of the EIS must be limited to those potential impacts directly related to the facility design and operation. I ask that EFSEC consider the following site-specific impacts in preparation of the SEPA Environmental Impact Statement:

- Spill prevention and spill response requirements that protect the environment
- Ability to comply with state and federal air quality emission standards
- Impact of the facility on local transportation infrastructure and public services
- Facility design that meets all relevant safety standards

I am concerned that conducting a SEPA EIS that looks beyond site-based facility impacts is an overreach that could dilute the core focus on this facility. This balanced approach is consistent with Washington's SEPA statutes and regulations and will protect the environment while also ensuring the state's ability to grow its economy.

Thank you for considering my comments.

Sincerely,  
Helio Alvarez

UTC)

**From:** nate\_weeks@ymail.com  
**Sent:** Tuesday, December 10, 2013 2:28 PM  
**To:** EFSEC (UTC)  
**Subject:** Tesoro Savage Vancouver Energy Distribution Terminal

Dear EFSEC Commissioners

I am a Tesoro employee from Texas and am writing in support of the Tesoro Savage Vancouver Energy Distribution Terminal. As a Tesoro employee, I stand behind the company's commitment to safety and the environment. I have firsthand experience of how important safe, clean, and efficient operations are to Tesoro.

This terminal will also contribute to energy independence in the United States. Because of my job, I understand the market demand for moving crude oil to West Coast refineries. This terminal will make the transportation of crude oil from the Bakken and other regions more accessible and reduce the amount of crude U.S. refineries are currently forced to purchase from international sources. By allowing U.S. crude to move through a U.S. terminal to U.S. refineries, Tesoro and Savage are supporting U.S. energy independence and creating U.S. jobs.

I urge the committee to bear in mind the positive impact this terminal will have on the U.S. economy. As a Tesoro employee and an American job holder, my family depends on the strength of the oil and gas industry in the U.S. To keep this project moving forward on a schedule that will allow for its timely approval, please keep the scope of the SEPA environmental analysis purposefully focused on potential impacts from the proposed facility. The scope of the EIS must be limited to those potential impacts directly related to the facility design and operation. I ask that EFSEC consider the following site-specific impacts in preparation of the SEPA Environmental Impact Statement:

- Spill prevention and spill response requirements that protect the environment
- Ability to comply with state and federal air quality emission standards
- Impact of the facility on local transportation infrastructure and public services
- Facility design that meets all relevant safety standards

I am concerned that conducting a SEPA EIS that looks beyond site-based facility impacts is an overreach that could dilute the core focus on this facility. This balanced approach is consistent with Washington's SEPA statutes and regulations and will protect the environment while also ensuring the state's ability to grow its economy.

Thank you for considering my comments.

Sincerely,  
Nate Weeks



**From:** Stephanie Goldbach <tierbefreier-berlin@gmx.de>  
**Sent:** Tuesday, December 10, 2013 2:30 PM  
**To:** EFSEC (UTC)  
**Subject:** Reference Application No. 2013-01/Docket No. EF-131590: Please reject the proposed Tesoro Savage oil export terminal project

Dear Governor Inslee and Washington EFSEC:

I urge you to assess the full impact of Tesoro Savage's proposal to ship 360,000 barrels of oil each day through Spokane, the Columbia River Gorge National Scenic Area, Vancouver and the Columbia River. Oil-by-rail and export by ship is a bad deal for Washington State and the entire Northwest region. The project comes at a steep price for rail and river communities throughout the state and along the Columbia River, yet offers few jobs in return. Based on the far reaching impacts of this project, I urge you to deny Tesoro Savage's unprecedented proposal.

The public safety and environmental impacts of the state's largest pipeline-on-wheels proposal deserve close scrutiny. For example, EFSEC must assess:

- The potential impacts of a large train-related oil spill along the rail route in Washington and beyond.
- The transportation and public health impacts of additional unit train traffic through communities along the proposed oil-by-rail route. This includes evaluating emergency response capabilities in Vancouver, where oil trains would deliver and store oil, and other communities along the rail and shipping route.
- The increased risk of an oil tanker spill on Washington State waters and along the shipping route.
- The project's impact on climate change. This analysis should include climate change impacts from crude oil as well as tar sands oil from cradle to grave.

After carefully considering the safety, environmental, and climate risks associated with the project, I respectfully ask you to deny Tesoro Savage's application.

Thank you.

Stephanie Goldbach

10629

**From:** Stephanie Goldbach <tierbefreier-berlin@gmx.de>  
**Sent:** Tuesday, December 10, 2013 2:36 PM  
**To:** EFSEC (UTC)  
**Subject:** Reference Application No. 2013-01/Docket No. EF-131590: Please reject the proposed Tesoro Savage oil export terminal project

Dear Governor Inslee and Washington EFSEC:

I urge you to assess the full impact of Tesoro Savage's proposal to ship 360,000 barrels of oil each day through Spokane, the Columbia River Gorge National Scenic Area, Vancouver and the Columbia River. Oil-by-rail and export by ship is a bad deal for Washington State and the entire Northwest region. The project comes at a steep price for rail and river communities throughout the state and along the Columbia River, yet offers few jobs in return. Based on the far reaching impacts of this project, I urge you to deny Tesoro Savage's unprecedented proposal.

The public safety and environmental impacts of the state's largest pipeline-on-wheels proposal deserve close scrutiny. For example, EFSEC must assess:

- The potential impacts of a large train-related oil spill along the rail route in Washington and beyond.
- The transportation and public health impacts of additional unit train traffic through communities along the proposed oil-by-rail route. This includes evaluating emergency response capabilities in Vancouver, where oil trains would deliver and store oil, and other communities along the rail and shipping route.
- The increased risk of an oil tanker spill on Washington State waters and along the shipping route.
- The project's impact on climate change. This analysis should include climate change impacts from crude oil as well as tar sands oil from cradle to grave.

After carefully considering the safety, environmental, and climate risks associated with the project, I respectfully ask you to deny Tesoro Savage's application.

Thank you.

Stephanie Goldbach

10629

**UTC)**

---

**From:** patricia.j.suplick@tsocorp.com  
**Sent:** Tuesday, December 10, 2013 2:37 PM  
**To:** EFSEC (UTC)  
**Subject:** Tesoro Savage Vancouver Energy Distribution Terminal

Dear EFSEC Commissioners

I am a Tesoro employee from Texas and am writing in support of the Tesoro Savage Vancouver Energy Distribution Terminal. As a Tesoro employee, I stand behind the company's commitment to safety and the environment. I have firsthand experience of how important safe, clean, and efficient operations are to Tesoro.

This terminal will also contribute to energy independence in the United States. Because of my job, I understand the market demand for moving crude oil to West Coast refineries. This terminal will make the transportation of crude oil from the Bakken and other regions more accessible and reduce the amount of crude U.S. refineries are currently forced to purchase from international sources. By allowing U.S. crude to move through a U.S. terminal to U.S. refineries, Tesoro and Savage are supporting U.S. energy independence and creating U.S. jobs.

I urge the committee to bear in mind the positive impact this terminal will have on the U.S. economy. As a Tesoro employee and an American job holder, my family depends on the strength of the oil and gas industry in the U.S. To keep this project moving forward on a schedule that will allow for its timely approval, please keep the scope of the SEPA environmental analysis purposefully focused on potential impacts from the proposed facility. The scope of the EIS must be limited to those potential impacts directly related to the facility design and operation. I ask that EFSEC consider the following site-specific impacts in preparation of the SEPA Environmental Impact Statement:

- Spill prevention and spill response requirements that protect the environment
- Ability to comply with state and federal air quality emission standards
- Impact of the facility on local transportation infrastructure and public services
- Facility design that meets all relevant safety standards

I am concerned that conducting a SEPA EIS that looks beyond site-based facility impacts is an overreach that could dilute the core focus on this facility. This balanced approach is consistent with Washington's SEPA statutes and regulations and will protect the environment while also ensuring the state's ability to grow its economy.

Thank you for considering my comments.

Sincerely,  
Patricia Suplick

**(UTC)**

---

**From:** Steven.E.Elliser@tsocorp.com  
**Sent:** Tuesday, December 10, 2013 2:39 PM  
**To:** EFSEC (UTC)  
**Subject:** Tesoro Savage Vancouver Energy Distribution Terminal

Dear EFSEC Commissioners

I am a Tesoro employee from and am writing in support of the Tesoro Savage Vancouver Energy Distribution Terminal. As a Tesoro employee, I stand behind the company's commitment to safety and the environment. I have firsthand experience of how important safe, clean, and efficient operations are to Tesoro.

This terminal will also contribute to energy independence in the United States. Because of my job, I understand the market demand for moving crude oil to West Coast refineries. This terminal will make the transportation of crude oil from the Bakken and other regions more accessible and reduce the amount of crude U.S. refineries are currently forced to purchase from international sources. By allowing U.S. crude to move through a U.S. terminal to U.S. refineries, Tesoro and Savage are supporting U.S. energy independence and creating U.S. jobs.

I urge the committee to bear in mind the positive impact this terminal will have on the U.S. economy. As a Tesoro employee and an American job holder, my family depends on the strength of the oil and gas industry in the U.S. To keep this project moving forward on a schedule that will allow for its timely approval, please keep the scope of the SEPA environmental analysis purposefully focused on potential impacts from the proposed facility. The scope of the EIS must be limited to those potential impacts directly related to the facility design and operation. I ask that EFSEC consider the following site-specific impacts in preparation of the SEPA Environmental Impact Statement:

- Spill prevention and spill response requirements that protect the environment
- Ability to comply with state and federal air quality emission standards
- Impact of the facility on local transportation infrastructure and public services
- Facility design that meets all relevant safety standards

I am concerned that conducting a SEPA EIS that looks beyond site-based facility impacts is an overreach that could dilute the core focus on this facility. This balanced approach is consistent with Washington's SEPA statutes and regulations and will protect the environment while also ensuring the state's ability to grow its economy.

Thank you for considering my comments.

Sincerely,  
Steven Elliser

**UTC)**

---

**From:** John.m.robertson@tsocorp.com  
**Sent:** Tuesday, December 10, 2013 2:39 PM  
**To:** EFSEC (UTC)  
**Subject:** Tesoro Savage Vancouver Energy Distribution Terminal

Dear EFSEC Commissioners

I am a Tesoro employee from San Antonio and am writing in support of the Tesoro Savage Vancouver Energy Distribution Terminal. As a Tesoro employee, I stand behind the company's commitment to safety and the environment. I have firsthand experience of how important safe, clean, and efficient operations are to Tesoro.

This terminal will also contribute to energy independence in the United States. Because of my job, I understand the market demand for moving crude oil to West Coast refineries. This terminal will make the transportation of crude oil from the Bakken and other regions more accessible and reduce the amount of crude U.S. refineries are currently forced to purchase from international sources. By allowing U.S. crude to move through a U.S. terminal to U.S. refineries, Tesoro and Savage are supporting U.S. energy independence and creating U.S. jobs.

I urge the committee to bear in mind the positive impact this terminal will have on the U.S. economy. As a Tesoro employee and an American job holder, my family depends on the strength of the oil and gas industry in the U.S. To keep this project moving forward on a schedule that will allow for its timely approval, please keep the scope of the SEPA environmental analysis purposefully focused on potential impacts from the proposed facility. The scope of the EIS must be limited to those potential impacts directly related to the facility design and operation. I ask that EFSEC consider the following site-specific impacts in preparation of the SEPA Environmental Impact Statement:

- Spill prevention and spill response requirements that protect the environment
- Ability to comply with state and federal air quality emission standards
- Impact of the facility on local transportation infrastructure and public services
- Facility design that meets all relevant safety standards

I am concerned that conducting a SEPA EIS that looks beyond site-based facility impacts is an overreach that could dilute the core focus on this facility. This balanced approach is consistent with Washington's SEPA statutes and regulations and will protect the environment while also ensuring the state's ability to grow its economy.

Thank you for considering my comments.

Sincerely,  
John Robertson

**UTC)**

---

**From:** april.r.chaisson@tsocorp.com  
**Sent:** Tuesday, December 10, 2013 2:42 PM  
**To:** EFSEC (UTC)  
**Subject:** Tesoro Savage Vancouver Energy Distribution Terminal

Dear EFSEC Commissioners

I am a Tesoro employee from San Antonio, Texas and am writing in support of the Tesoro Savage Vancouver Energy Distribution Terminal. As a Tesoro employee, I stand behind the company's commitment to safety and the environment. I have firsthand experience of how important safe, clean, and efficient operations are to Tesoro.

This terminal will also contribute to energy independence in the United States. Because of my job, I understand the market demand for moving crude oil to West Coast refineries. This terminal will make the transportation of crude oil from the Bakken and other regions more accessible and reduce the amount of crude U.S. refineries are currently forced to purchase from international sources. By allowing U.S. crude to move through a U.S. terminal to U.S. refineries, Tesoro and Savage are supporting U.S. energy independence and creating U.S. jobs.

I urge the committee to bear in mind the positive impact this terminal will have on the U.S. economy. As a Tesoro employee and an American job holder, my family depends on the strength of the oil and gas industry in the U.S. To keep this project moving forward on a schedule that will allow for its timely approval, please keep the scope of the SEPA environmental analysis purposefully focused on potential impacts from the proposed facility. The scope of the EIS must be limited to those potential impacts directly related to the facility design and operation. I ask that EFSEC consider the following site-specific impacts in preparation of the SEPA Environmental Impact Statement:

- Spill prevention and spill response requirements that protect the environment
- Ability to comply with state and federal air quality emission standards
- Impact of the facility on local transportation infrastructure and public services
- Facility design that meets all relevant safety standards

I am concerned that conducting a SEPA EIS that looks beyond site-based facility impacts is an overreach that could dilute the core focus on this facility. This balanced approach is consistent with Washington's SEPA statutes and regulations and will protect the environment while also ensuring the state's ability to grow its economy.

Thank you for considering my comments.

Sincerely,  
April Chaisson

**(UTC)**

---

**From:** joel.a.larkins@tsocorp.com  
**Sent:** Tuesday, December 10, 2013 2:45 PM  
**To:** EFSEC (UTC)  
**Subject:** Tesoro Savage Vancouver Energy Distribution Terminal

Dear EFSEC Commissioners

I am a Tesoro employee from Texas and am writing in support of the Tesoro Savage Vancouver Energy Distribution Terminal. As a Tesoro employee, I stand behind the company's commitment to safety and the environment. I have firsthand experience of how important safe, clean, and efficient operations are to Tesoro.

This terminal will also contribute to energy independence in the United States. Because of my job, I understand the market demand for moving crude oil to West Coast refineries. This terminal will make the transportation of crude oil from the Bakken and other regions more accessible and reduce the amount of crude U.S. refineries are currently forced to purchase from international sources. By allowing U.S. crude to move through a U.S. terminal to U.S. refineries, Tesoro and Savage are supporting U.S. energy independence and creating U.S. jobs.

I urge the committee to bear in mind the positive impact this terminal will have on the U.S. economy. As a Tesoro employee and an American job holder, my family depends on the strength of the oil and gas industry in the U.S. To keep this project moving forward on a schedule that will allow for its timely approval, please keep the scope of the SEPA environmental analysis purposefully focused on potential impacts from the proposed facility. The scope of the EIS must be limited to those potential impacts directly related to the facility design and operation. I ask that EFSEC consider the following site-specific impacts in preparation of the SEPA Environmental Impact Statement:

- Spill prevention and spill response requirements that protect the environment
- Ability to comply with state and federal air quality emission standards
- Impact of the facility on local transportation infrastructure and public services
- Facility design that meets all relevant safety standards

I am concerned that conducting a SEPA EIS that looks beyond site-based facility impacts is an overreach that could dilute the core focus on this facility. This balanced approach is consistent with Washington's SEPA statutes and regulations and will protect the environment while also ensuring the state's ability to grow its economy.

Thank you for considering my comments.

Sincerely,  
Joel Larkins

**From:** Stephanie Goldbach <tierbefreier-berlin@gmx.de>  
**Sent:** Tuesday, December 10, 2013 2:50 PM  
**To:** EFSEC (UTC)  
**Subject:** Reference Application No. 2013-01/Docket No. EF-131590: Please reject the proposed Tesoro Savage oil export terminal project

Dear Governor Inslee and Washington EFSEC:

I urge you to assess the full impact of Tesoro Savage's proposal to ship 360,000 barrels of oil each day through Spokane, the Columbia River Gorge National Scenic Area, Vancouver and the Columbia River. Oil-by-rail and export by ship is a bad deal for Washington State and the entire Northwest region. The project comes at a steep price for rail and river communities throughout the state and along the Columbia River, yet offers few jobs in return. Based on the far reaching impacts of this project, I urge you to deny Tesoro Savage's unprecedented proposal.

The public safety and environmental impacts of the state's largest pipeline-on-wheels proposal deserve close scrutiny. For example, EFSEC must assess:

- The potential impacts of a large train-related oil spill along the rail route in Washington and beyond.
- The transportation and public health impacts of additional unit train traffic through communities along the proposed oil-by-rail route. This includes evaluating emergency response capabilities in Vancouver, where oil trains would deliver and store oil, and other communities along the rail and shipping route.
- The increased risk of an oil tanker spill on Washington State waters and along the shipping route.
- The project's impact on climate change. This analysis should include climate change impacts from crude oil as well as tar sands oil from cradle to grave.

After carefully considering the safety, environmental, and climate risks associated with the project, I respectfully ask you to deny Tesoro Savage's application.

Thank you.

Stephanie Goldbach

10629



**From:** tesorosa@box911.bluehost.com  
**Sent:** Tuesday, December 10, 2013 2:56 PM  
**To:** EFSEC (UTC)  
**Subject:** Tesoro Savage Vancouver Energy Distribution Terminal

Dear EFSEC Commissioners

I am a Tesoro employee from Texas and am writing in support of the Tesoro Savage Vancouver Energy Distribution Terminal. As a Tesoro employee, I stand behind the company's commitment to safety and the environment. I have firsthand experience of how important safe, clean, and efficient operations are to Tesoro.

This terminal will also contribute to energy independence in the United States. Because of my job, I understand the market demand for moving crude oil to West Coast refineries. This terminal will make the transportation of crude oil from the Bakken and other regions more accessible and reduce the amount of crude U.S. refineries are currently forced to purchase from international sources. By allowing U.S. crude to move through a U.S. terminal to U.S. refineries, Tesoro and Savage are supporting U.S. energy independence and creating U.S. jobs.

I urge the committee to bear in mind the positive impact this terminal will have on the U.S. economy. As a Tesoro employee and an American job holder, my family depends on the strength of the oil and gas industry in the U.S. To keep this project moving forward on a schedule that will allow for its timely approval, please keep the scope of the SEPA environmental analysis purposefully focused on potential impacts from the proposed facility. The scope of the EIS must be limited to those potential impacts directly related to the facility design and operation. I ask that EFSEC consider the following site-specific impacts in preparation of the SEPA Environmental Impact Statement:

- Spill prevention and spill response requirements that protect the environment
- Ability to comply with state and federal air quality emission standards
- Impact of the facility on local transportation infrastructure and public services
- Facility design that meets all relevant safety standards

I am concerned that conducting a SEPA EIS that looks beyond site-based facility impacts is an overreach that could dilute the core focus on this facility. This balanced approach is consistent with Washington's SEPA statutes and regulations and will protect the environment while also ensuring the state's ability to grow its economy.

Thank you for considering my comments.

Sincerely,  
Brian Semff

UTC)

---

**From:** Benjamin.J.Martinez@tsocorp.com  
**Sent:** Tuesday, December 10, 2013 3:00 PM  
**To:** EFSEC (UTC)  
**Subject:** Tesoro Savage Vancouver Energy Distribution Terminal

Dear EFSEC Commissioners

I am a Tesoro employee from and am writing in support of the Tesoro Savage Vancouver Energy Distribution Terminal. As a Tesoro employee, I stand behind the company's commitment to safety and the environment. I have firsthand experience of how important safe, clean, and efficient operations are to Tesoro.

This terminal will also contribute to energy independence in the United States. Because of my job, I understand the market demand for moving crude oil to West Coast refineries. This terminal will make the transportation of crude oil from the Bakken and other regions more accessible and reduce the amount of crude U.S. refineries are currently forced to purchase from international sources. By allowing U.S. crude to move through a U.S. terminal to U.S. refineries, Tesoro and Savage are supporting U.S. energy independence and creating U.S. jobs.

I urge the committee to bear in mind the positive impact this terminal will have on the U.S. economy. As a Tesoro employee and an American job holder, my family depends on the strength of the oil and gas industry in the U.S. To keep this project moving forward on a schedule that will allow for its timely approval, please keep the scope of the SEPA environmental analysis purposefully focused on potential impacts from the proposed facility. The scope of the EIS must be limited to those potential impacts directly related to the facility design and operation. I ask that EFSEC consider the following site-specific impacts in preparation of the SEPA Environmental Impact Statement:

- Spill prevention and spill response requirements that protect the environment
- Ability to comply with state and federal air quality emission standards
- Impact of the facility on local transportation infrastructure and public services
- Facility design that meets all relevant safety standards

I am concerned that conducting a SEPA EIS that looks beyond site-based facility impacts is an overreach that could dilute the core focus on this facility. This balanced approach is consistent with Washington's SEPA statutes and regulations and will protect the environment while also ensuring the state's ability to grow its economy.

Thank you for considering my comments.

Sincerely,  
Benjamin Martinez

**UTC)**

---

**From:** Del Hardesty <delha4@yahoo.com>  
**Sent:** Tuesday, December 10, 2013 3:05 PM  
**To:** EFSEC (UTC)  
**Subject:** Reference Application No. 2013-01/Docket No. EF-131590: Please reject the proposed Tesoro Savage oil export terminal project

Dear Governor Inslee and Washington EFSEC:

I urge you to assess the full impact of Tesoro Savage's proposal to ship 360,000 barrels of oil each day through Spokane, the Columbia River Gorge National Scenic Area, Vancouver and the Columbia River. Oil-by-rail and export by ship is a bad deal for Washington State and the entire Northwest region. The project comes at a steep price for rail and river communities throughout the state and along the Columbia River, yet offers few jobs in return. Based on the far reaching impacts of this project, I urge you to deny Tesoro Savage's unprecedented proposal.

The public safety and environmental impacts of the state's largest pipeline-on-wheels proposal deserve close scrutiny. For example, EFSEC must assess:

- The potential impacts of a large train-related oil spill along the rail route in Washington and beyond.
- The transportation and public health impacts of additional unit train traffic through communities along the proposed oil-by-rail route. This includes evaluating emergency response capabilities in Vancouver, where oil trains would deliver and store oil, and other communities along the rail and shipping route.
- The increased risk of an oil tanker spill on Washington State waters and along the shipping route.
- The project's impact on climate change. This analysis should include climate change impacts from crude oil as well as tar sands oil from cradle to grave.

After carefully considering the safety, environmental, and climate risks associated with the project, I respectfully ask you to deny Tesoro Savage's application.

Thank you.

Del Hardesty

222306

UTC)

---

**From:** bneighbors1@gvvc.com  
**Sent:** Tuesday, December 10, 2013 3:11 PM  
**To:** EFSEC (UTC)  
**Subject:** Tesoro Savage Vancouver Energy Distribution Terminal

Dear EFSEC Commissioners

I am a Tesoro employee from Texas and am writing in support of the Tesoro Savage Vancouver Energy Distribution Terminal. As a Tesoro employee, I stand behind the company's commitment to safety and protecting the environment. I have firsthand experience of how important safe, clean, and efficient operations are to Tesoro.

This terminal will also contribute to energy independence in the United States. Because of my job, I understand the market demand for moving crude oil to West Coast refineries. This terminal will make the transportation of crude oil from the Bakken and other regions more accessible and reduce the amount of crude U.S. refineries are currently forced to purchase from international sources. By allowing U.S. crude to move through a U.S. terminal to U.S. refineries, Tesoro and Savage are supporting U.S. energy independence and creating U.S. jobs.

I urge the committee to bear in mind the positive impact this terminal will have on the U.S. economy. As a Tesoro employee and an American job holder, my family depends on the strength of the oil and gas industry in the U.S. To keep this project moving forward on a schedule that will allow for its timely approval, please keep the scope of the SEPA environmental analysis purposefully focused on potential impacts from the proposed facility. The scope of the EIS must be limited to those potential impacts directly related to the facility design and operation. I ask that EFSEC consider the following site-specific impacts in preparation of the SEPA Environmental Impact Statement:

- Spill prevention and spill response requirements that protect the environment
- Ability to comply with state and federal air quality emission standards
- Impact of the facility on local transportation infrastructure and public services
- Facility design that meets all relevant safety standards

I am concerned that conducting a SEPA EIS that looks beyond site-based facility impacts is an overreach that could dilute the core focus on this facility. This balanced approach is consistent with Washington's SEPA statutes and regulations and will protect the environment while also ensuring the state's ability to grow its economy.

Thank you for considering my comments.

Sincerely,  
Brooks Neighbors

**(UTC)**

---

**From:** HeilmannR@msn.com  
**Sent:** Tuesday, December 10, 2013 3:28 PM  
**To:** EFSEC (UTC)  
**Subject:** Tesoro Savage Vancouver Energy Distribution Terminal

Dear EFSEC Commissioners

I am a Tesoro employee from Washington and am writing in support of the Tesoro Savage Vancouver Energy Distribution Terminal. As a Tesoro employee, I stand behind the company's commitment to safety and the environment. I have firsthand experience of how important safe, clean, and efficient operations are to Tesoro.

This terminal will also contribute to energy independence in the United States. Because of my job, I understand the market demand for moving crude oil to West Coast refineries. This terminal will make the transportation of crude oil from the Bakken and other regions more accessible and reduce the amount of crude U.S. refineries are currently forced to purchase from international sources. By allowing U.S. crude to move through a U.S. terminal to U.S. refineries, Tesoro and Savage are supporting U.S. energy independence and creating U.S. jobs.

I urge the committee to bear in mind the positive impact this terminal will have on the U.S. economy. As a Tesoro employee and an American job holder, my family depends on the strength of the oil and gas industry in the U.S. To keep this project moving forward on a schedule that will allow for its timely approval, please keep the scope of the SEPA environmental analysis purposefully focused on potential impacts from the proposed facility. The scope of the EIS must be limited to those potential impacts directly related to the facility design and operation. I ask that EFSEC consider the following site-specific impacts in preparation of the SEPA Environmental Impact Statement:

- Spill prevention and spill response requirements that protect the environment
- Ability to comply with state and federal air quality emission standards
- Impact of the facility on local transportation infrastructure and public services
- Facility design that meets all relevant safety standards

I am concerned that conducting a SEPA EIS that looks beyond site-based facility impacts is an overreach that could dilute the core focus on this facility. This balanced approach is consistent with Washington's SEPA statutes and regulations and will protect the environment while also ensuring the state's ability to grow its economy.

Thank you for considering my comments.

Sincerely,  
Rick Heilmann

**UTC)**

---

**From:** robert.r.motley@tsocorp.com  
**Sent:** Tuesday, December 10, 2013 3:31 PM  
**To:** EFSEC (UTC)  
**Subject:** Tesoro Savage Vancouver Energy Distribution Terminal

Dear EFSEC Commissioners

I am a Tesoro employee from California and am writing in support of the Tesoro Savage Vancouver Energy Distribution Terminal. As a Tesoro employee, I stand behind the company's commitment to safety and the environment. I have firsthand experience of how important safe, clean, and efficient operations are to Tesoro.

This terminal will also contribute to energy independence in the United States. Because of my job, I understand the market demand for moving crude oil to West Coast refineries. This terminal will make the transportation of crude oil from the Bakken and other regions more accessible and reduce the amount of crude U.S. refineries are currently forced to purchase from international sources. By allowing U.S. crude to move through a U.S. terminal to U.S. refineries, Tesoro and Savage are supporting U.S. energy independence and creating U.S. jobs.

I urge the committee to bear in mind the positive impact this terminal will have on the U.S. economy. As a Tesoro employee and an American job holder, my family depends on the strength of the oil and gas industry in the U.S. To keep this project moving forward on a schedule that will allow for its timely approval, please keep the scope of the SEPA environmental analysis purposefully focused on potential impacts from the proposed facility. The scope of the EIS must be limited to those potential impacts directly related to the facility design and operation. I ask that EFSEC consider the following site-specific impacts in preparation of the SEPA Environmental Impact Statement:

- Spill prevention and spill response requirements that protect the environment
- Ability to comply with state and federal air quality emission standards
- Impact of the facility on local transportation infrastructure and public services
- Facility design that meets all relevant safety standards

I am concerned that conducting a SEPA EIS that looks beyond site-based facility impacts is an overreach that could dilute the core focus on this facility. This balanced approach is consistent with Washington's SEPA statutes and regulations and will protect the environment while also ensuring the state's ability to grow its economy.

Thank you for considering my comments.

Sincerely,  
Robert Motley

**(UTC)**

---

**From:** jess.j.noble@tsocorp.com  
**Sent:** Tuesday, December 10, 2013 3:38 PM  
**To:** EFSEC (UTC)  
**Subject:** Tesoro Savage Vancouver Energy Distribution Terminal

Dear EFSEC Commissioners

I am a Tesoro employee from Texas and am writing in support of the Tesoro Savage Vancouver Energy Distribution Terminal. As a Tesoro employee, I stand behind the company's commitment to safety and the environment. I have firsthand experience of how important safe, clean, and efficient operations are to Tesoro.

This terminal will also contribute to energy independence in the United States. Because of my job, I understand the market demand for moving crude oil to West Coast refineries. This terminal will make the transportation of crude oil from the Bakken and other regions more accessible and reduce the amount of crude U.S. refineries are currently forced to purchase from international sources. By allowing U.S. crude to move through a U.S. terminal to U.S. refineries, Tesoro and Savage are supporting U.S. energy independence and creating U.S. jobs.

I urge the committee to bear in mind the positive impact this terminal will have on the U.S. economy. As a Tesoro employee and an American job holder, my family depends on the strength of the oil and gas industry in the U.S. To keep this project moving forward on a schedule that will allow for its timely approval, please keep the scope of the SEPA environmental analysis purposefully focused on potential impacts from the proposed facility. The scope of the EIS must be limited to those potential impacts directly related to the facility design and operation. I ask that EFSEC consider the following site-specific impacts in preparation of the SEPA Environmental Impact Statement:

- Spill prevention and spill response requirements that protect the environment
- Ability to comply with state and federal air quality emission standards
- Impact of the facility on local transportation infrastructure and public services
- Facility design that meets all relevant safety standards

I am concerned that conducting a SEPA EIS that looks beyond site-based facility impacts is an overreach that could dilute the core focus on this facility. This balanced approach is consistent with Washington's SEPA statutes and regulations and will protect the environment while also ensuring the state's ability to grow its economy.

Thank you for considering my comments.

Sincerely,  
Jess Noble

**(UTC)**

---

**From:** sheila.powers@tsocorp.com  
**Sent:** Tuesday, December 10, 2013 3:38 PM  
**To:** EFSEC (UTC)  
**Subject:** Tesoro Savage Vancouver Energy Distribution Terminal

Dear EFSEC Commissioners

I am a Tesoro employee from Carson, CA and am writing in support of the Tesoro Savage Vancouver Energy Distribution Terminal. As a Tesoro employee, I stand behind the company's commitment to safety and the environment. I have firsthand experience of how important safe, clean, and efficient operations are to Tesoro.

This terminal will also contribute to energy independence in the United States. Because of my job, I understand the market demand for moving crude oil to West Coast refineries. This terminal will make the transportation of crude oil from the Bakken and other regions more accessible and reduce the amount of crude U.S. refineries are currently forced to purchase from international sources. By allowing U.S. crude to move through a U.S. terminal to U.S. refineries, Tesoro and Savage are supporting U.S. energy independence and creating U.S. jobs.

I urge the committee to bear in mind the positive impact this terminal will have on the U.S. economy. As a Tesoro employee and an American job holder, my family depends on the strength of the oil and gas industry in the U.S. To keep this project moving forward on a schedule that will allow for its timely approval, please keep the scope of the SEPA environmental analysis purposefully focused on potential impacts from the proposed facility. The scope of the EIS must be limited to those potential impacts directly related to the facility design and operation. I ask that EFSEC consider the following site-specific impacts in preparation of the SEPA Environmental Impact Statement:

- Spill prevention and spill response requirements that protect the environment
- Ability to comply with state and federal air quality emission standards
- Impact of the facility on local transportation infrastructure and public services
- Facility design that meets all relevant safety standards

I am concerned that conducting a SEPA EIS that looks beyond site-based facility impacts is an overreach that could dilute the core focus on this facility. This balanced approach is consistent with Washington's SEPA statutes and regulations and will protect the environment while also ensuring the state's ability to grow its economy.

Thank you for considering my comments.

Sincerely,  
Sheila Powers



**UTC)**

---

**From:** steven.s.wolf@tsocorp.com  
**Sent:** Tuesday, December 10, 2013 3:40 PM  
**To:** EFSEC (UTC)  
**Subject:** Tesoro Savage Vancouver Energy Distribution Terminal

Dear Stephen Posner

I am a resident of California and am writing in support of the Tesoro Savage Vancouver Energy Distribution Terminal. The proposed project will receive and ship North American crude oil to US refineries to offset or replace foreign imports and declining production in Alaska and California. This crude oil will be refined in US refineries to help meet the everyday needs of residents and businesses along the US West Coast – including those of the state of Washington. In short, it helps with America's energy security and will bring economic benefits and valuable jobs to our local communities.

As a resident, I believe the safety and environmental reviews are extremely important and will help ensure that this is done safely and responsibly. As such, I would request that the scope of the SEPA environmental analysis be purposefully focused on potential impacts from the proposed facility. The scope of the EIS must be limited to those potential impacts directly related to the facility design and operation. I ask that EFSEC consider the following site-specific impacts in preparation of the SEPA Environmental Impact Statement:

- Risks caused by earthquakes
- Spill prevention and spill response requirements that protect the environment
- Ability to comply with state and federal air quality emission standards
- Protection of Columbia River water quality and fish and wildlife resources
- Impact of the facility on local transportation infrastructure and public services
- Facility design that meets all relevant safety standards

I am concerned that conducting a SEPA EIS that looks beyond site-based facility impacts is an overreach that could dilute the core focus on this facility and have a dampening effect on transportation of other commodities, such as agricultural products, which are vital to the economies of Vancouver, Clark County and the state of Washington.

This balanced approach is consistent with SEPA statutes and regulations and will protect the environment while also ensuring the state's ability to grow its economy. Thank you for considering my comments.

Sincerely,  
Steven Wolf

**From:** james.g.keen@tsocorp.com  
**Sent:** Tuesday, December 10, 2013 3:41 PM  
**To:** EFSEC (UTC)  
**Subject:** Tesoro Savage Vancouver Energy Distribution Terminal

Dear EFSEC Commissioners

I am a Tesoro employee from Texas and am writing in support of the Tesoro Savage Vancouver Energy Distribution Terminal. As a Tesoro employee, I stand behind the company's commitment to safety and the environment. I have firsthand experience of how important safe, clean, and efficient operations are to Tesoro.

This terminal will also contribute to energy independence in the United States. Because of my job, I understand the market demand for moving crude oil to West Coast refineries. This terminal will make the transportation of crude oil from the Bakken and other regions more accessible and reduce the amount of crude U.S. refineries are currently forced to purchase from international sources. By allowing U.S. crude to move through a U.S. terminal to U.S. refineries, Tesoro and Savage are supporting U.S. energy independence and creating U.S. jobs.

I urge the committee to bear in mind the positive impact this terminal will have on the U.S. economy. As a Tesoro employee and an American job holder, my family depends on the strength of the oil and gas industry in the U.S. To keep this project moving forward on a schedule that will allow for its timely approval, please keep the scope of the SEPA environmental analysis purposefully focused on potential impacts from the proposed facility. The scope of the EIS must be limited to those potential impacts directly related to the facility design and operation. I ask that EFSEC consider the following site-specific impacts in preparation of the SEPA Environmental Impact Statement:

- Spill prevention and spill response requirements that protect the environment
- Ability to comply with state and federal air quality emission standards
- Impact of the facility on local transportation infrastructure and public services
- Facility design that meets all relevant safety standards

I am concerned that conducting a SEPA EIS that looks beyond site-based facility impacts is an overreach that could dilute the core focus on this facility. This balanced approach is consistent with Washington's SEPA statutes and regulations and will protect the environment while also ensuring the state's ability to grow its economy.

Thank you for considering my comments.

Sincerely,  
James Keen

**From:** joe.crotty@tsocorp.com  
**Sent:** Tuesday, December 10, 2013 3:49 PM  
**To:** EFSEC (UTC)  
**Subject:** Tesoro Savage Vancouver Energy Distribution Terminal

Dear EFSEC Commissioners

I am a Tesoro employee from California and am writing in support of the Tesoro Savage Vancouver Energy Distribution Terminal. As a Tesoro employee, I stand behind the company's commitment to safety and the environment. I have firsthand experience of how important safe, clean, and efficient operations are to Tesoro.

This terminal will also contribute to energy independence in the United States. Because of my job, I understand the market demand for moving crude oil to West Coast refineries. This terminal will make the transportation of crude oil from the Bakken and other regions more accessible and reduce the amount of crude U.S. refineries are currently forced to purchase from international sources. By allowing U.S. crude to move through a U.S. terminal to U.S. refineries, Tesoro and Savage are supporting U.S. energy independence and creating U.S. jobs.

I urge the committee to bear in mind the positive impact this terminal will have on the U.S. economy. As a Tesoro employee and an American job holder, my family depends on the strength of the oil and gas industry in the U.S. To keep this project moving forward on a schedule that will allow for its timely approval, please keep the scope of the SEPA environmental analysis purposefully focused on potential impacts from the proposed facility. The scope of the EIS must be limited to those potential impacts directly related to the facility design and operation. I ask that EFSEC consider the following site-specific impacts in preparation of the SEPA Environmental Impact Statement:

- Spill prevention and spill response requirements that protect the environment
- Ability to comply with state and federal air quality emission standards
- Impact of the facility on local transportation infrastructure and public services
- Facility design that meets all relevant safety standards

I am concerned that conducting a SEPA EIS that looks beyond site-based facility impacts is an overreach that could dilute the core focus on this facility. This balanced approach is consistent with Washington's SEPA statutes and regulations and will protect the environment while also ensuring the state's ability to grow its economy.

Thank you for considering my comments.

Sincerely,  
Joe Crotty

---

**From:** Alex Oles <alex.cjmajor@gmail.com>  
**Sent:** Tuesday, December 10, 2013 3:58 PM  
**To:** EFSEC (UTC)  
**Subject:** Reference Application No. 2013-01/Docket No. EF-131590: Please reject the proposed Tesoro Savage oil export terminal project

Dear Governor Inslee and Washington EFSEC:

I urge you to assess the full impact of Tesoro Savage's proposal to ship 360,000 barrels of oil each day through Spokane, the Columbia River Gorge National Scenic Area, Vancouver and the Columbia River. Oil-by-rail and export by ship is a bad deal for Washington State and the entire Northwest region. The project comes at a steep price for rail and river communities throughout the state and along the Columbia River, yet offers few jobs in return. Based on the far reaching impacts of this project, I urge you to deny Tesoro Savage's unprecedented proposal.

The public safety and environmental impacts of the state's largest pipeline-on-wheels proposal deserve close scrutiny. For example, EFSEC must assess:

- The potential impacts of a large train-related oil spill along the rail route in Washington and beyond.
- The transportation and public health impacts of additional unit train traffic through communities along the proposed oil-by-rail route. This includes evaluating emergency response capabilities in Vancouver, where oil trains would deliver and store oil, and other communities along the rail and shipping route.
- The increased risk of an oil tanker spill on Washington State waters and along the shipping route.
- The project's impact on climate change. This analysis should include climate change impacts from crude oil as well as tar sands oil from cradle to grave.

After carefully considering the safety, environmental, and climate risks associated with the project, I respectfully ask you to deny Tesoro Savage's application.

Thank you.

Alex Oles

60521

**From:** r.drew.mason@tsocorp.com  
**Sent:** Tuesday, December 10, 2013 4:06 PM  
**To:** EFSEC (UTC)  
**Subject:** Tesoro Savage Vancouver Energy Distribution Terminal

Dear EFSEC Commissioners

I am a Tesoro employee from Los Angeles, California and am writing in support of the Tesoro Savage Vancouver Energy Distribution Terminal. As a Tesoro employee, I stand behind the company's commitment to safety and the environment. I have firsthand experience of how important safe, clean, and efficient operations are to Tesoro.

This terminal will also contribute to energy independence in the United States. Because of my job, I understand the market demand for moving crude oil to West Coast refineries. This terminal will make the transportation of crude oil from the Bakken and other regions more accessible and reduce the amount of crude U.S. refineries are currently forced to purchase from international sources. By allowing U.S. crude to move through a U.S. terminal to U.S. refineries, Tesoro and Savage are supporting U.S. energy independence and creating U.S. jobs.

I urge the committee to bear in mind the positive impact this terminal will have on the U.S. economy. As a Tesoro employee and an American job holder, my family depends on the strength of the oil and gas industry in the U.S. To keep this project moving forward on a schedule that will allow for its timely approval, please keep the scope of the SEPA environmental analysis purposefully focused on potential impacts from the proposed facility. The scope of the EIS must be limited to those potential impacts directly related to the facility design and operation. I ask that EFSEC consider the following site-specific impacts in preparation of the SEPA Environmental Impact Statement:

- Spill prevention and spill response requirements that protect the environment
- Ability to comply with state and federal air quality emission standards
- Impact of the facility on local transportation infrastructure and public services
- Facility design that meets all relevant safety standards

I am concerned that conducting a SEPA EIS that looks beyond site-based facility impacts is an overreach that could dilute the core focus on this facility. This balanced approach is consistent with Washington's SEPA statutes and regulations and will protect the environment while also ensuring the state's ability to grow its economy.

Thank you for considering my comments.

Sincerely,  
Robert Mason

(UTC)

---

**From:** Logan Johnson <lost\_vivacity@yahoo.com>  
**Sent:** Tuesday, December 10, 2013 4:14 PM  
**To:** EFSEC (UTC)  
**Subject:** Reference Application No. 2013-01/Docket No. EF-131590: Please reject the proposed Tesoro Savage oil export terminal project

Dear Governor Inslee and Washington EFSEC:

I urge you to assess the full impact of Tesoro Savage's proposal to ship 360,000 barrels of oil each day through Spokane, the Columbia River Gorge National Scenic Area, Vancouver and the Columbia River. Oil-by-rail and export by ship is a bad deal for Washington State and the entire Northwest region. The project comes at a steep price for rail and river communities throughout the state and along the Columbia River, yet offers few jobs in return. Based on the far reaching impacts of this project, I urge you to deny Tesoro Savage's unprecedented proposal.

The public safety and environmental impacts of the state's largest pipeline-on-wheels proposal deserve close scrutiny. For example, EFSEC must assess:

- The potential impacts of a large train-related oil spill along the rail route in Washington and beyond.
- The transportation and public health impacts of additional unit train traffic through communities along the proposed oil-by-rail route. This includes evaluating emergency response capabilities in Vancouver, where oil trains would deliver and store oil, and other communities along the rail and shipping route.
- The increased risk of an oil tanker spill on Washington State waters and along the shipping route.
- The project's impact on climate change. This analysis should include climate change impacts from crude oil as well as tar sands oil from cradle to grave.

After carefully considering the safety, environmental, and climate risks associated with the project, I respectfully ask you to deny Tesoro Savage's application.

Thank you.

Logan Johnson

32256

**From:** james.d.tangaro@gmail.com  
**Sent:** Tuesday, December 10, 2013 4:18 PM  
**To:** EFSEC (UTC)  
**Subject:** Tesoro Savage Vancouver Energy Distribution Terminal

Dear EFSEC Commissioners

I am a Tesoro employee from Kenai, AK and am writing in support of the Tesoro Savage Vancouver Energy Distribution Terminal. As a Tesoro employee, I stand behind the company's commitment to safety and the environment. I have firsthand experience of how important safe, clean, and efficient operations are to Tesoro.

This terminal will also contribute to energy independence in the United States. Because of my job, I understand the market demand for moving crude oil to West Coast refineries. This terminal will make the transportation of crude oil from the Bakken and other regions more accessible and reduce the amount of crude U.S. refineries are currently forced to purchase from international sources. By allowing U.S. crude to move through a U.S. terminal to U.S. refineries, Tesoro and Savage are supporting U.S. energy independence and creating U.S. jobs.

I urge the committee to bear in mind the positive impact this terminal will have on the U.S. economy. As a Tesoro employee and an American job holder, my family depends on the strength of the oil and gas industry in the U.S. To keep this project moving forward on a schedule that will allow for its timely approval, please keep the scope of the SEPA environmental analysis purposefully focused on potential impacts from the proposed facility. The scope of the EIS must be limited to those potential impacts directly related to the facility design and operation. I ask that EFSEC consider the following site-specific impacts in preparation of the SEPA Environmental Impact Statement:

- Spill prevention and spill response requirements that protect the environment
- Ability to comply with state and federal air quality emission standards
- Impact of the facility on local transportation infrastructure and public services
- Facility design that meets all relevant safety standards

I am concerned that conducting a SEPA EIS that looks beyond site-based facility impacts is an overreach that could dilute the core focus on this facility. This balanced approach is consistent with Washington's SEPA statutes and regulations and will protect the environment while also ensuring the state's ability to grow its economy.

Thank you for considering my comments.

Sincerely,  
James Tangaro

(UTC)

---

**From:** grife1@tsocorp.com  
**Sent:** Tuesday, December 10, 2013 4:23 PM  
**To:** EFSEC (UTC)  
**Subject:** Tesoro Savage Vancouver Energy Distribution Terminal

Dear Stephen Posner

I am a resident of California and am writing in support of the Tesoro Savage Vancouver Energy Distribution Terminal. The proposed project will receive and ship North American crude oil to US refineries to offset or replace foreign imports and declining production in Alaska and California. This crude oil will be refined in US refineries to help meet the everyday needs of residents and businesses along the US West Coast – including those of the state of Washington. In short, it helps with America's energy security and will bring economic benefits and valuable jobs to our local communities.

As a resident, I believe the safety and environmental reviews are extremely important and will help ensure that this is done safely and responsibly. As such, I would request that the scope of the SEPA environmental analysis be purposefully focused on potential impacts from the proposed facility. The scope of the EIS must be limited to those potential impacts directly related to the facility design and operation. I ask that EFSEC consider the following site-specific impacts in preparation of the SEPA Environmental Impact Statement:

- Risks caused by earthquakes
- Spill prevention and spill response requirements that protect the environment
- Ability to comply with state and federal air quality emission standards
- Protection of Columbia River water quality and fish and wildlife resources
- Impact of the facility on local transportation infrastructure and public services
- Facility design that meets all relevant safety standards

I am concerned that conducting a SEPA EIS that looks beyond site-based facility impacts is an overreach that could dilute the core focus on this facility and have a dampening effect on transportation of other commodities, such as agricultural products, which are vital to the economies of Vancouver, Clark County and the state of Washington.

This balanced approach is consistent with SEPA statutes and regulations and will protect the environment while also ensuring the state's ability to grow its economy. Thank you for considering my comments.

Sincerely,  
Enrique Griffith



**UTC)**

---

**From:** Jim Steitz <steitz@ripleys.com>  
**Sent:** Tuesday, December 10, 2013 1:00 PM  
**To:** EFSEC (UTC)  
**Subject:** App. No. 2013-01/Docket No. EF-131590 - Reject Tesoro Savage oil export terminal

Jim Steitz  
564 Esslinger Drive  
Gatlinburg, TN 37738

December 9, 2013

Governor Jay Inslee  
Office of the Governor/PO Box 40002  
Olympia, WA 98504-0002

Energy Facility Site Evaluation Council  
PO Box 43172  
Olympia, WA 98504-3172

Dear Governor Inslee and Washington EFSEC:

As a former resident of the Pacific Northwest, who retains great affection for my original home, I urge you to **reject the proposal of Tesoro Savage to ship 360,000 barrels of oil each day** through Spokane, Vancouver and the Columbia River.

This volume of oil would constitute an **unmitigated ecological disaster, in violent opposition to the state's objective of reducing carbon dioxide emissions.** The Washington State government has expressed an overall goal of moving toward a lower-carbon economy, and to avoid the worst impacts of global warming. If these goals are to have any meaningful policy expression within the agencies, tasked with carrying out a governor's policy, then the Energy Facility Site Evaluation Council cannot issue this permit. This oil export terminal would be linked rail and Columbia River barge to some of the largest carbon bombs in North America, namely the Canadian tar sands and the Bakken oil shales of the Dakotas. **Human survival demands that this grave liability to our atmosphere remain securely underground.**

The Tesoro Savage terminal, and other proposals for fossil fuel infrastructure along the Pacific Northwest coast, would be especially and painfully ironic for a state that has otherwise made admirable and meritorious progress in shifting to clean energy and ecological sustainability more broadly. I can scarcely fathom the horrific reversal of ecological paradigm that The Tesoro Savage oil export terminal would constitute for **Washington State, whose role in the global energy infrastructure would invert from a leader in the low-carbon transition, to a conduit of death for the highest-carbon fuels on Earth.** The State of Washington has already committed itself to regional greenhouse gas reduction initiatives, and even though the initiatives are not yet self-enforcing, the Tesoro Savage terminal's 360,000 daily barrels of oil **would dwarf any carbon reductions attained in those frameworks.** **It therefore is a contrary and irreconcilable public policy to Washington's goals.**

Even before the climate impacts are considered, the immediate impacts to communities and landscapes between the oil sources and the departure point to the Pacific are numbing. The Columbia River Gorge National Scenic Area would be subverted into an industrial corridor. The cities of Spokane and Vancouver would suffer a diminution of their quality of life due to noise, air pollution, and the omnipresent eyesores of tankers occupying and displacing the otherwise pleasant sight of the Columbia River. Many other communities along the railroads further east would find additional hours of their day transformed into an acoustic and seismic barrage of rail traffic beyond anything they bargained for in joining that community. Moreover, the risk of a **single oil tanker spill in the precious waters of the Columbia River in and around its junction with the Pacific Coast cannot be overstated.** The coastline is a defining feature of both economic and aesthetic sustenance for Washington State, and no risk to its integrity should be contemplated.

For all of these reasons, I urge you to immediately **reject the Tesoro Savage oil export terminal as contrary to the public interest of both Washington State and your fellow human beings** around the world who depend upon a habitable climate. Thank you for your attention to this urgent issue.

Sincerely,

Jim Steitz

**From:** Roger Imes at Lorien <info@lorienherbs.com>  
**Sent:** Tuesday, December 10, 2013 3:50 PM  
**To:** EFSEC (UTC)  
**Subject:** The need for shale oil is nil.

Dear Sir or Madam,

I am a resident, and the owner of a small business here in Spokane.

I am very distressed to learn of this plan to ship millions of gallons of crude shale oil through our city by using the railway.

As you are aware we are already under great stress from the idea of shipping coal in the same fashion.

From a local point of view this all makes very little sense, there are no benefits or merits to speak of, only the likelihood of long-term environmental damage and possible illness/deaths caused by accidents and by pollution.

From a global perspective this pursuit of energy intensive, and highly polluting, methods of carbon extraction, makes no sense at all.

We need to wean ourselves from our imaginary dependence on this oil.

We need to reduce CO2 emissions and not create far more by using almost as much energy to extract carbon as we gain from doing it?

Then we ship it half way around the world, it is a pure madness.

This madness is not necessary.

For over 5 years, we have been able to use an electric car that achieves the equivalent of 250 mpg, for 98% of both our personal, and for our business needs. The only oil required is one half pint, to be changed at 50,000 miles.

I would like to express a very strong protest against this idea of shipping so much dangerous crude oil through Spokane, a very strong protest indeed.

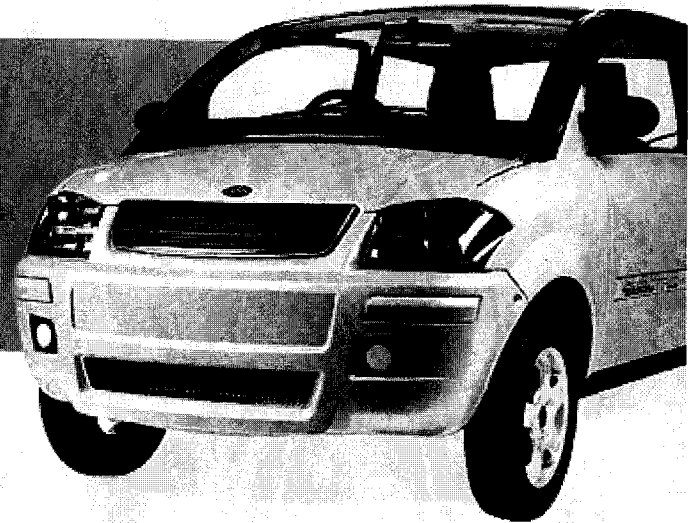
Thank you, Roger Imes  
Spokane. 99202



ZERO EMISSION  NO NOISE  
**ZENN**

**EARTH'S FAVORITE CAR**

**100%**  
**ELECTRIC AC DRIVE**



- **ZERO EMISSION**
- **LOW MAINTENANCE**
- **245 MPG EQUIVALENCY**

The earth-friendly future is here with the ZENN, the Zero-Emission, No-Noise fully-featured electric vehicle. In addition to requiring no gasoline, the ZENN distinguishes itself with a comfort, utility and convenience no other Neighborhood Electric Vehicle (NEV) can match.



Printed by Printer Gateway - A recognized environmental print partner. Printer Gateway's environmental process addresses all critical aspects of environmental accountability & our unwavering commitment to air, soil, water & trees.

[www.ZENNCars.com](http://www.ZENNCars.com)



Now with solar assist.